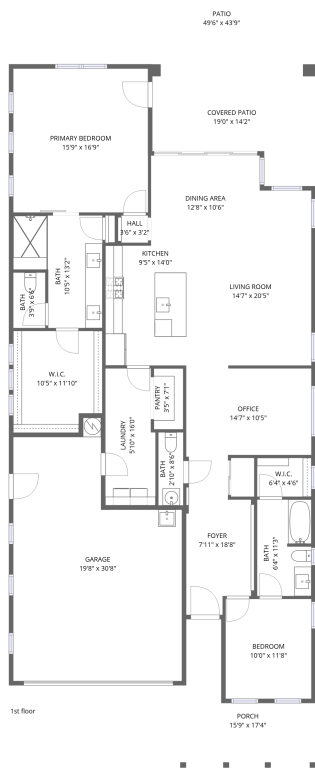


Home data report

4903 N 205th Gln,Buckeye,AZ,US



Total Area: 1737 sq. ft

1st Floor: 1737 sq. ft

Excluded: Garage 484 sq. ft, Porch 160 sq. ft, Covered patio 217 sq. ft, Patio 1207 sq. ft, Walls: 139 sq. ft

Property summary

 **1** Floors

 **2** Bedrooms

 **2** Bathrooms

Home data report

4903 N 205th Gln,Buckeye,AZ,US

 **1**
Half baths

 **1**
Garages

Home data report

4903 N 205th Gln,Buckeye,AZ,US



Room dimensions

Floor 1 Total:1737sqft Excluded: 2068sqft

#		Dimensions	sqft	Counted as living area
1	Hall	3'6" x 3'2"	11 sq. ft	Yes
2	W.I.C.	10'5" x 11'10"	117 sq. ft	Yes
3	Foyer	7'11" x 18'8"	123 sq. ft	Yes
4	Bedroom	10'0" x 11'8"	116 sq. ft	Yes
5	Covered Patio	19'0" x 14'2"	217 sq. ft	No
6	Patio	49'6" x 43'9"	1207 sq. ft	No
7	Dining Area	12'8" x 10'6"	133 sq. ft	Yes
8	Porch	15'9" x 17'4"	160 sq. ft	No
9	Bath	10'5" x 13'2"	109 sq. ft	Yes
10	Primary Bedroom	15'9" x 16'9"	264 sq. ft	Yes
11	Bath	3'9" x 6'6"	24 sq. ft	Yes

Home data report

4903 N 205th Gln,Buckeye,AZ,US

#		Dimensions	sqft	Counted as living area
12	Bath	2'10" x 8'6"	25 sq. ft	Yes
13	Pantry	3'5" x 7'1"	24 sq. ft	Yes
14	Garage	19'8" x 30'8"	484 sq. ft	No
15	Office	14'7" x 10'5"	149 sq. ft	Yes
16	Laundry	5'10" x 16'0"	89 sq. ft	Yes
17	Bath	6'4" x 11'3"	70 sq. ft	Yes
18	W.I.C.	6'4" x 4'6"	29 sq. ft	Yes
19	Kitchen	9'5" x 14'0"	132 sq. ft	Yes
20	Living Room	14'7" x 20'5"	243 sq. ft	Yes

1 Floor 1 - Hall



Dimensions: 3'6" x 3'2"
Area: 11 sq. ft
Counted as living area: Yes

Heated: Yes
Finished: Yes
Enclosed: Yes
Contiguous: Yes
Permitted: Yes
Wet space: No
Addition: No
Conversion: No

2 Floor 1 - W.I.C.



Dimensions: 10'5" x 11'10"
Area: 117 sq. ft
Counted as living area: Yes

Heated: Yes
Finished: Yes
Enclosed: Yes
Contiguous: Yes
Permitted: Yes
Wet space: No
Addition: No
Conversion: No

3 Floor 1 - Foyer



Dimensions: 7'11" x 18'8"
Area: 123 sq. ft
Counted as living area: Yes

Heated: Yes
Finished: Yes
Enclosed: Yes
Contiguous: Yes
Permitted: Yes
Wet space: No
Addition: No
Conversion: No

4 Floor 1 - Bedroom



Dimensions: 10'0" x 11'8"
Area: 116 sq. ft
Counted as living area: Yes

Heated: Yes
Finished: Yes
Enclosed: Yes
Contiguous: Yes
Permitted: Yes
Wet space: No
Addition: No
Conversion: No

5 Floor 1 - Covered Patio



Dimensions: 19'0" x 14'2"
Area: 217 sq. ft
Counted as living area: No

Heated: No
Finished: No
Enclosed: No
Contiguous: Yes
Permitted: Yes
Wet space: No
Addition: No
Conversion: No

6 Floor 1 - Patio



Dimensions: 49'6" x 43'9"
Area: 1207 sq. ft
Counted as living area: No

Heated: No
Finished: No
Enclosed: No
Contiguous: Yes
Permitted: Yes
Wet space: No
Addition: No
Conversion: No

7 Floor 1 - Dining Area



Dimensions: 12'8" x 10'6"
Area: 133 sq. ft
Counted as living area: Yes

Heated: Yes
Finished: Yes
Enclosed: Yes
Contiguous: Yes
Permitted: Yes
Wet space: No
Addition: No
Conversion: No

8 Floor 1 - Porch



Dimensions: 15'9" x 17'4"
Area: 160 sq. ft
Counted as living area: No

Heated: No
Finished: No
Enclosed: No
Contiguous: Yes
Permitted: Yes
Wet space: No
Addition: No
Conversion: No

9 Floor 1 - Bath



Dimensions: 10'5" x 13'2"
Area: 109 sq. ft
Counted as living area: Yes

Heated: Yes
Finished: Yes
Enclosed: Yes
Contiguous: Yes
Permitted: Yes
Wet space: Yes
Addition: No
Conversion: No

10 Floor 1 - Primary Bedroom



Dimensions: 15'9" x 16'9"
Area: 264 sq. ft
Counted as living area: Yes

Heated: Yes
Finished: Yes
Enclosed: Yes
Contiguous: Yes
Permitted: Yes
Wet space: No
Addition: No
Conversion: No

11 Floor 1 - Bath



Dimensions: 3'9" x 6'6"
Area: 24 sq. ft
Counted as living area: Yes

Heated: Yes
Finished: Yes
Enclosed: Yes
Contiguous: Yes
Permitted: Yes
Wet space: Yes
Addition: No
Conversion: No

12 Floor 1 - Bath



Dimensions: 2'10" x 8'6"
Area: 25 sq. ft
Counted as living area: Yes

Heated: Yes
Finished: Yes
Enclosed: Yes
Contiguous: Yes
Permitted: Yes
Wet space: Yes
Addition: No
Conversion: No

13 Floor 1 - Pantry



Dimensions: 3'5" x 7'1"
Area: 24 sq. ft
Counted as living area: Yes

Heated: Yes
Finished: Yes
Enclosed: Yes
Contiguous: Yes
Permitted: Yes
Wet space: No
Addition: No
Conversion: No

14 Floor 1 - Garage



Dimensions: 19'8" x 30'8"
Area: 484 sq. ft
Counted as living area: No

Heated: No
Finished: No
Enclosed: Yes
Contiguous: Yes
Permitted: Yes
Wet space: No
Addition: No
Conversion: No

15 Floor 1 - Office



Dimensions: 14'7" x 10'5"
Area: 149 sq. ft
Counted as living area: Yes

Heated: Yes
Finished: Yes
Enclosed: Yes
Contiguous: Yes
Permitted: Yes
Wet space: No
Addition: No
Conversion: No

16 Floor 1 - Laundry



Dimensions: 5'10" x 16'0"
Area: 89 sq. ft
Counted as living area: Yes

Heated: Yes
Finished: Yes
Enclosed: Yes
Contiguous: Yes
Permitted: Yes
Wet space: No
Addition: No
Conversion: No

17 Floor 1 - Bath



Dimensions: 6'4" x 11'3"
Area: 70 sq. ft
Counted as living area: Yes

Heated: Yes
Finished: Yes
Enclosed: Yes
Contiguous: Yes
Permitted: Yes
Wet space: Yes
Addition: No
Conversion: No

18 Floor 1 - W.I.C.



Dimensions: 6'4" x 4'6"
Area: 29 sq. ft
Counted as living area: Yes

Heated: Yes
Finished: Yes
Enclosed: Yes
Contiguous: Yes
Permitted: Yes
Wet space: No
Addition: No
Conversion: No

19 Floor 1 - Kitchen



Dimensions: 9'5" x 14'0"
Area: 132 sq. ft
Counted as living area: Yes

Heated: Yes
Finished: Yes
Enclosed: Yes
Contiguous: Yes
Permitted: Yes
Wet space: No
Addition: No
Conversion: No

20 Floor 1 - Living Room



Dimensions: 14'7" x 20'5"
Area: 243 sq. ft
Counted as living area: Yes

Heated: Yes
Finished: Yes
Enclosed: Yes
Contiguous: Yes
Permitted: Yes
Wet space: No
Addition: No
Conversion: No