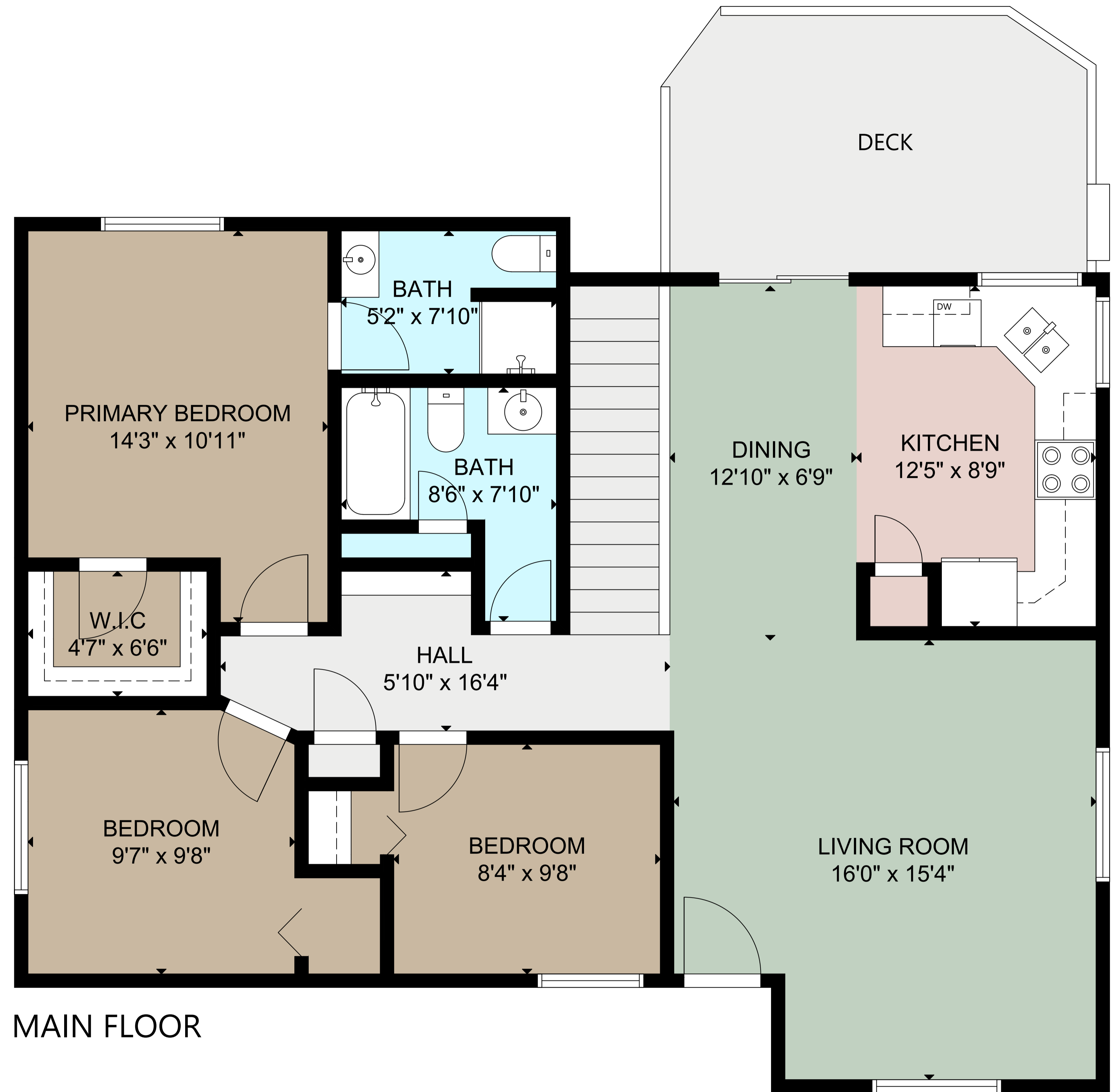


PARTIALLY FINISHED BASEMENT - UNDER CONSTRUCTION



MAIN FLOOR

GROSS INTERNAL AREA
 TOTAL: 2,039 SQ FT
 PARTIALLY FINISHED BASEMENT - UNDER CONSTRUCTION: 986 SQ FT, MAIN FLOOR: 1,053 SQ FT
 SIZE AND DIMENSIONS ARE APPROXIMATE, ACTUAL MAY VARY.