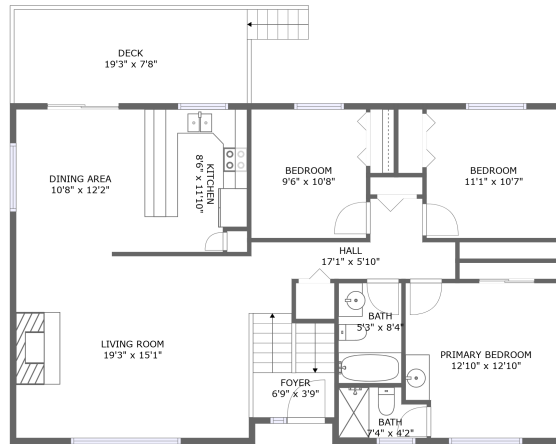
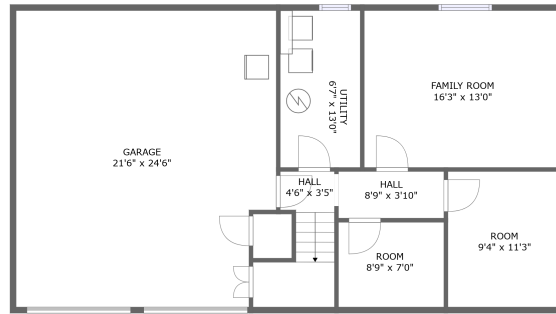


908 Holman Avenue, Pocatello, Bannock County, Idaho, United States, 83201



FLOOR 2




FLOOR 1

Property Summary

 **1** garages

 **3** bedrooms

 **1** bathrooms

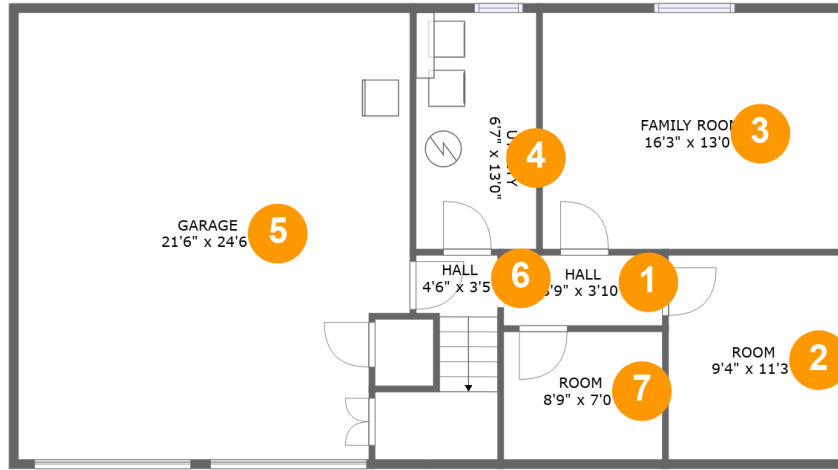
 **1** half baths

 **2** floors

 **1,631** Gross Living Area sqft

 **2,616** total sqft

908 Holman Avenue, Pocatello, Bannock County, Idaho, United States, 83201



Room Dimensions

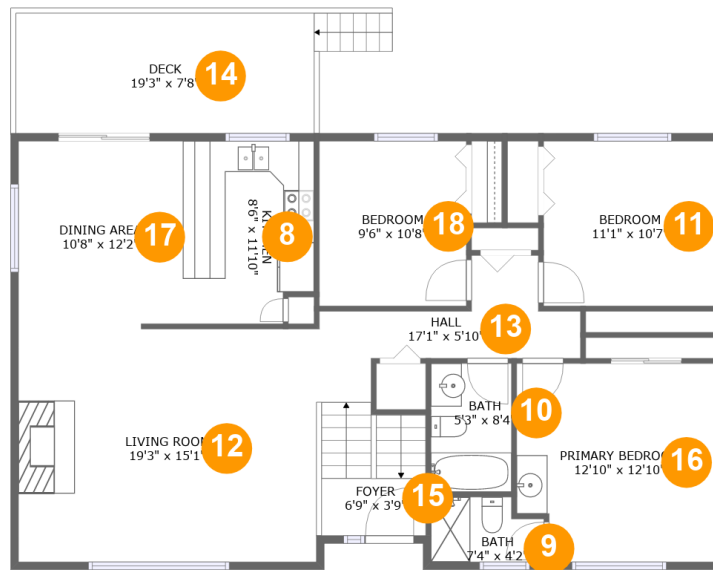
Floor 1

Total sqft: 1178

Living area: 343

#	Room name	Dimensions	Area (sqft)	Counted as Living Area
1	Hall	8'9" x 3'10"	34 sq. ft	Yes
2	Room	9'4" x 11'3"	105 sq. ft	No
3	Family Room	16'3" x 13'0"	211 sq. ft	Yes
4	Utility	6'7" x 13'0"	86 sq. ft	No
5	Garage	21'6" x 24'6"	510 sq. ft	No
6	Hall	4'6" x 3'5"	53 sq. ft	Yes
7	Room	8'9" x 7'0"	61 sq. ft	No

908 Holman Avenue, Pocatello, Bannock County, Idaho, United States, 83201



Room Dimensions

Floor 2

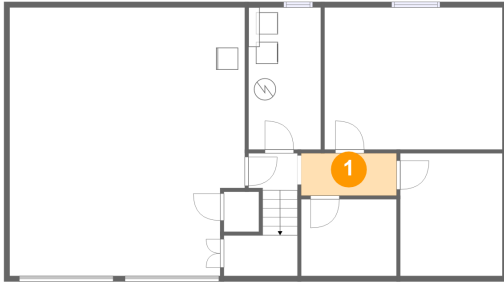
Total sqft: 1438

Living area: 1288

#	Room name	Dimensions	Area (sqft)	Counted as Living Area
8	Kitchen	8'6" x 11'10"	96 sq. ft	Yes
9	Bath	7'4" x 4'2"	28 sq. ft	Yes
10	Bath	5'3" x 8'4"	43 sq. ft	Yes
11	Bedroom	11'1" x 10'7"	119 sq. ft	Yes
12	Living Room	19'3" x 15'1"	290 sq. ft	Yes
13	Hall	17'1" x 5'10"	95 sq. ft	Yes
14	Deck	19'3" x 7'8"	150 sq. ft	No
15	Foyer	6'9" x 3'9"	41 sq. ft	Yes
16	Primary Bedroom	12'10" x 12'10"	158 sq. ft	Yes
17	Dining Area	10'8" x 12'2"	128 sq. ft	Yes
18	Bedroom	9'6" x 10'8"	101 sq. ft	Yes

908 Holman Avenue, Pocatello, Bannock County, Idaho, United States, 83201

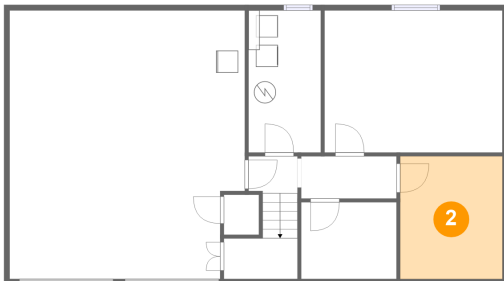
1 Floor 1 - Hall



Dimensions: 8'9" x 3'10"
Area: 34 sq. ft
Counted as Living Area:
Yes

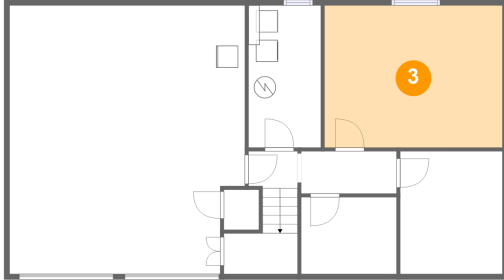
Heated: Yes
Finished: Yes
Enclosed: Yes
Contiguous:
Yes
Permitted: Yes
Wet Space: No
Addition: No
Conversion: No

2 Floor 1 - Room



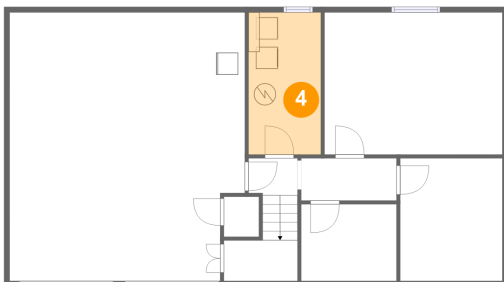
Dimensions: 9'4" x 11'3"
Area: 105 sq. ft
Counted as Living Area: No

Heated: Yes
Finished: No
Enclosed: Yes
Contiguous: Yes
Permitted: Yes
Wet Space: No
Addition: No
Conversion: No

**908 Holman Avenue, Pocatello, Bannock County,
Idaho, United States, 83201****3 Floor 1 - Family Room**

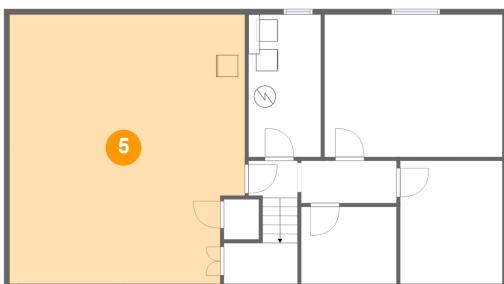
Dimensions: 16'3" x 13'0"
Area: 211 sq. ft
Counted as Living Area:
Yes

Heated: Yes
Finished: Yes
Enclosed: Yes
Contiguous:
Yes
Permitted: Yes
Wet Space: No
Addition: No
Conversion: No

4 Floor 1 - Utility

Dimensions: 6'7" x 13'0"
Area: 86 sq. ft
Counted as Living Area: No

Heated: Yes
Finished: No
Enclosed: Yes
Contiguous: Yes
Permitted: Yes
Wet Space: No
Addition: No
Conversion: No

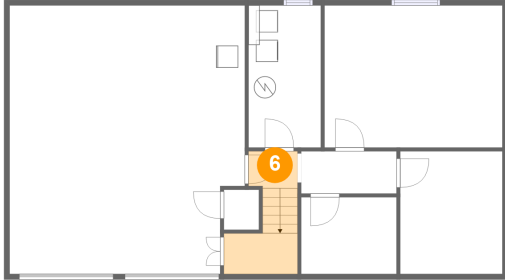
5 Floor 1 - Garage

Dimensions: 21'6" x 24'6"
Area: 510 sq. ft
Counted as Living Area: No

Heated: No
Finished: No
Enclosed: Yes
Contiguous: Yes
Permitted: Yes
Wet Space: No
Addition: No
Conversion: No

908 Holman Avenue, Pocatello, Bannock County, Idaho, United States, 83201

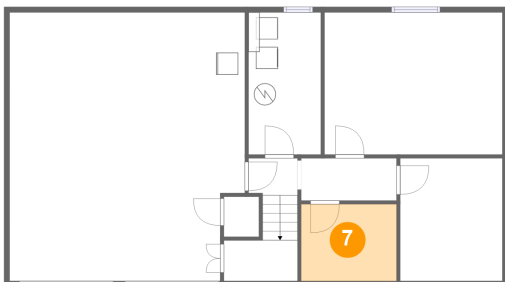
6 Floor 1 - Hall



Dimensions: 4'6" x 3'5"
Area: 53 sq. ft
Counted as Living Area:
Yes

Heated: Yes
Finished: Yes
Enclosed: Yes
Contiguous:
Yes
Permitted: Yes
Wet Space: No
Addition: No
Conversion: No

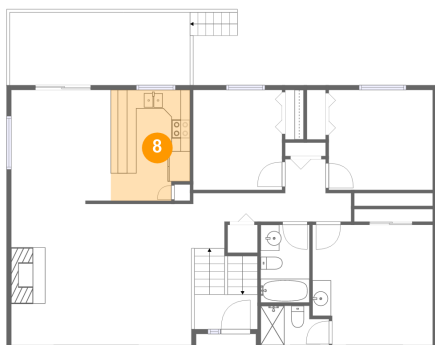
7 Floor 1 - Room



Dimensions: 8'9" x 7'0"
Area: 61 sq. ft
Counted as Living Area: No

Heated: Yes
Finished: No
Enclosed: Yes
Contiguous: Yes
Permitted: Yes
Wet Space: No
Addition: No
Conversion: No

8 Floor 2 - Kitchen

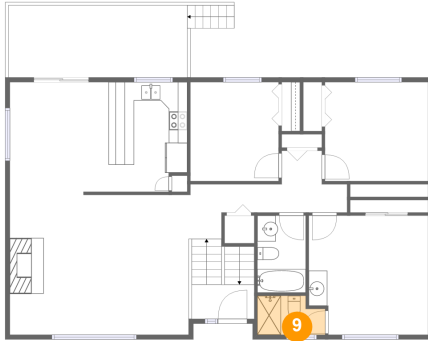


Dimensions: 8'6" x 11'10"
Area: 96 sq. ft
Counted as Living Area:
Yes

Heated: Yes
Finished: Yes
Enclosed: Yes
Contiguous:
Yes
Permitted: Yes
Wet Space: No
Addition: No
Conversion: No

908 Holman Avenue, Pocatello, Bannock County, Idaho, United States, 83201

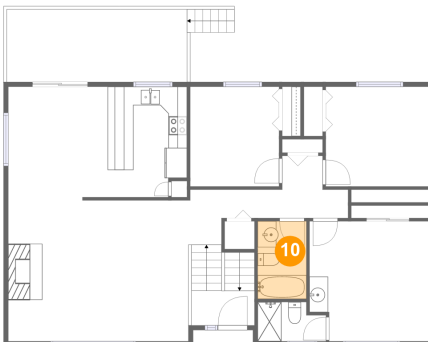
9 Floor 2 - Bath



Dimensions: 7'4" x 4'2"
Area: 28 sq. ft
Counted as Living Area:
Yes

Heated: Yes
Finished: Yes
Enclosed: Yes
Contiguous:
Yes
Permitted: Yes
Wet Space: Yes
Addition: No
Conversion: No

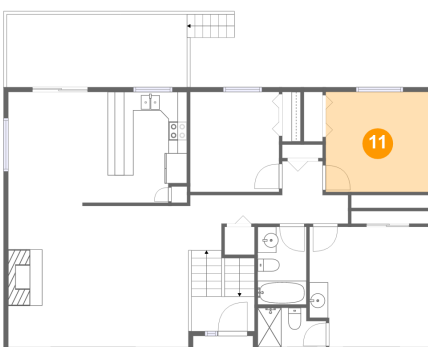
10 Floor 2 - Bath



Dimensions: 5'3" x 8'4"
Area: 43 sq. ft
Counted as Living Area:
Yes

Heated: Yes
Finished: Yes
Enclosed: Yes
Contiguous:
Yes
Permitted: Yes
Wet Space: Yes
Addition: No
Conversion: No

11 Floor 2 - Bedroom

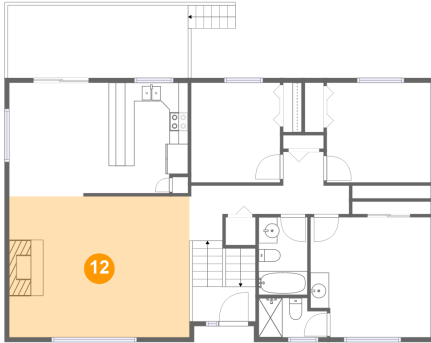


Dimensions: 11'1" x 10'7"
Area: 119 sq. ft
Counted as Living Area:
Yes

Heated: Yes
Finished: Yes
Enclosed: Yes
Contiguous:
Yes
Permitted: Yes
Wet Space: No
Addition: No
Conversion: No

908 Holman Avenue, Pocatello, Bannock County, Idaho, United States, 83201

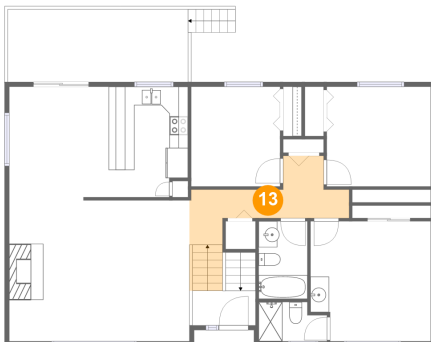
12 Floor 2 - Living Room



Dimensions: 19'3" x 15'1"
Area: 290 sq. ft
Counted as Living Area:
Yes

Heated: Yes
Finished: Yes
Enclosed: Yes
Contiguous:
Yes
Permitted: Yes
Wet Space: No
Addition: No
Conversion: No

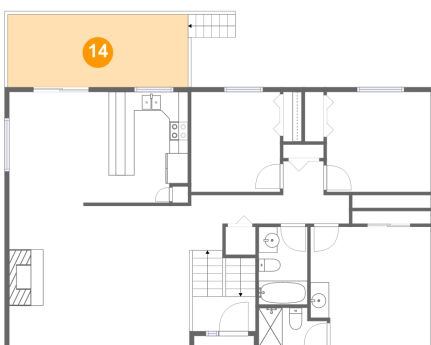
13 Floor 2 - Hall



Dimensions: 17'1" x 5'10"
Area: 95 sq. ft
Counted as Living Area:
Yes

Heated: Yes
Finished: Yes
Enclosed: Yes
Contiguous:
Yes
Permitted: Yes
Wet Space: No
Addition: No
Conversion: No

14 Floor 2 - Deck

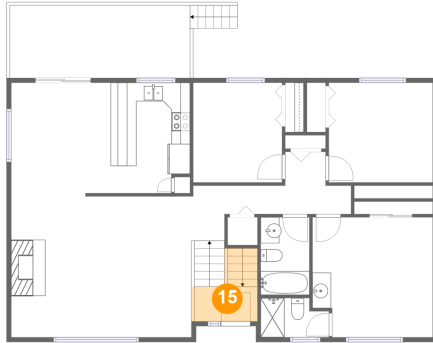


Dimensions: 19'3" x 7'8"
Area: 150 sq. ft
Counted as Living Area: No

Heated: No
Finished: Yes
Enclosed: No
Contiguous: Yes
Permitted: Yes
Wet Space: No
Addition: No
Conversion: No

908 Holman Avenue, Pocatello, Bannock County, Idaho, United States, 83201

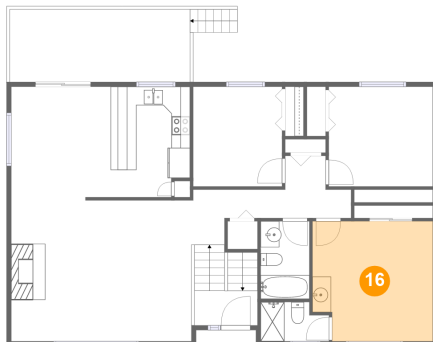
15 Floor 2 - Foyer



Dimensions: 6'9" x 3'9"
Area: 41 sq. ft
Counted as Living Area:
Yes

Heated: Yes
Finished: Yes
Enclosed: Yes
Contiguous:
Yes
Permitted: Yes
Wet Space: No
Addition: No
Conversion: No

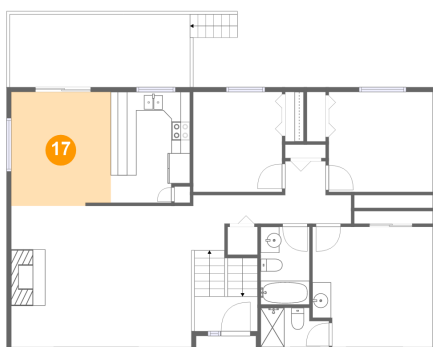
16 Floor 2 - Primary Bedroom



Dimensions: 12'10" x 12'10"
Area: 158 sq. ft
Counted as Living Area:
Yes

Heated: Yes
Finished: Yes
Enclosed: Yes
Contiguous:
Yes
Permitted: Yes
Wet Space: No
Addition: No
Conversion: No

17 Floor 2 - Dining Area

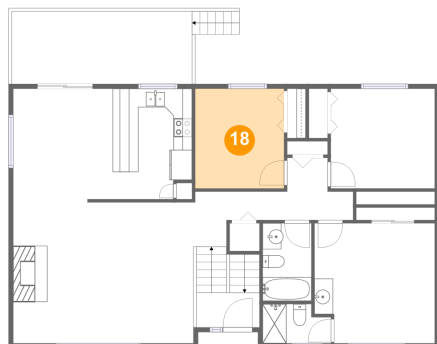


Dimensions: 10'8" x 12'2"
Area: 128 sq. ft
Counted as Living Area:
Yes

Heated: Yes
Finished: Yes
Enclosed: Yes
Contiguous:
Yes
Permitted: Yes
Wet Space: No
Addition: No
Conversion: No

908 Holman Avenue, Pocatello, Bannock County, Idaho, United States, 83201

18 Floor 2 - Bedroom



Dimensions: 9'6" x 10'8"
Area: 101 sq. ft
Counted as Living Area:
Yes

Heated: Yes
Finished: Yes
Enclosed: Yes
Contiguous:
Yes
Permitted: Yes
Wet Space: No
Addition: No
Conversion: No