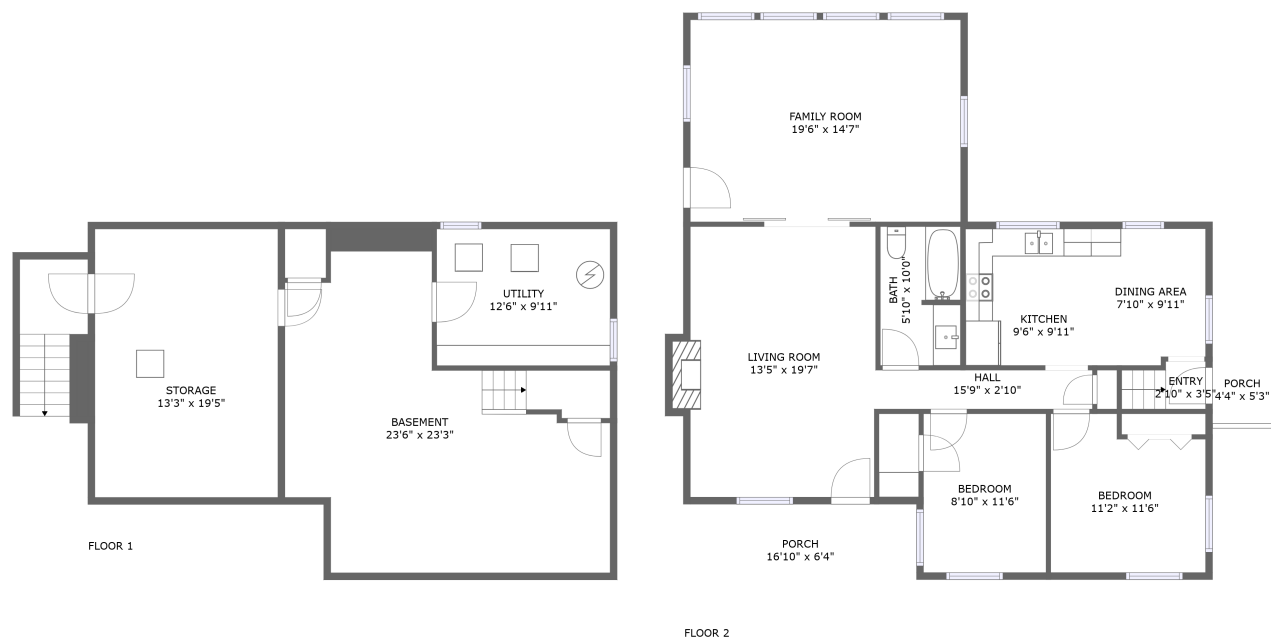


Home report

7151 Pine Needle Drive, Boones Mill, Roanoke County, Virginia,
United States, 24065



Total Area: 1217 sq. ft
Below Ground: 12 sq. ft, Floor 2: 1205 sq. ft
Excluded: Storage 287 sq. ft, Undefined 57 sq. ft, Utility 143 sq. ft, Basement 462 sq. ft, Outdoor Porch 128 sq. ft, Fireplace 8 sq. ft

Property summary

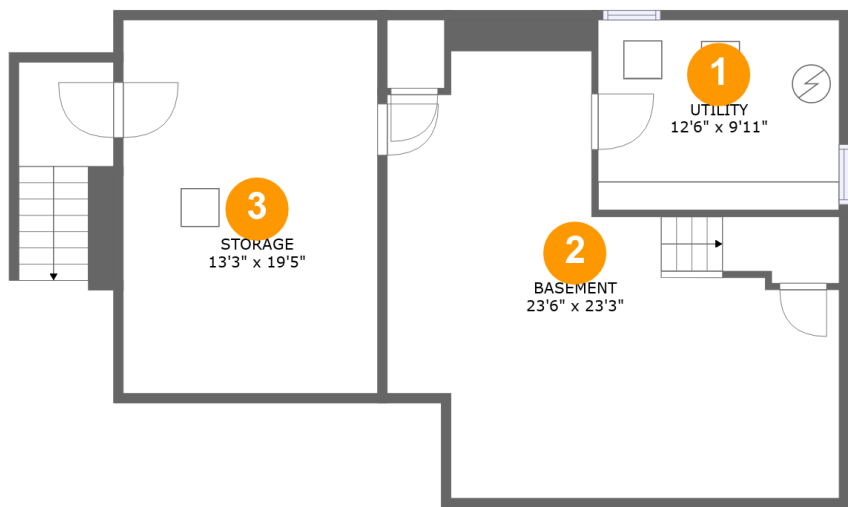
 **2** Floors

 **2** Bedrooms

 **1** Bathrooms

Home report

7151 Pine Needle Drive, Boones Mill, Roanoke County, Virginia,
United States, 24065



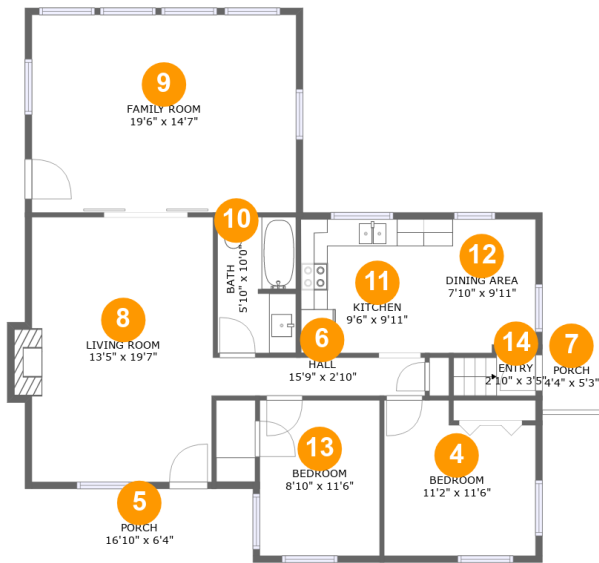
Room dimensions

Floor 1 Below ground Total:12sqft Excluded: 949sqft

#		Max Dimensions	sqft	Included
1	Utility	12'6" x 9'11"	124 sq. ft	No
2	Basement	23'6" x 23'3"	420 sq. ft	No
3	Storage	13'3" x 19'5"	256 sq. ft	No

Home report

7151 Pine Needle Drive, Boones Mill, Roanoke County, Virginia,
United States, 24065

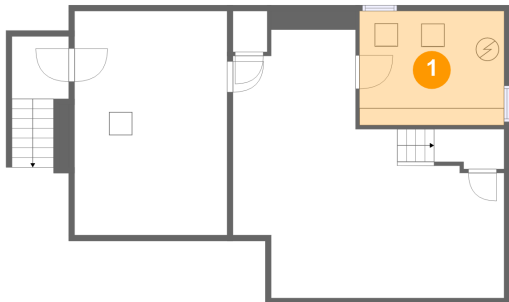


Room dimensions

Floor 2 Total:1205sqft Excluded: 136sqft

#		Max Dimensions	sqft	Included
4	Bedroom	11'2" x 11'6"	117 sq. ft	Yes
5	Porch	16'10" x 6'4"	106 sq. ft	No
6	Hall	15'9" x 2'10"	44 sq. ft	Yes
7	Porch	4'4" x 5'3"	22 sq. ft	No
8	Living Room	13'5" x 19'7"	267 sq. ft	Yes
9	Family Room	19'6" x 14'7"	285 sq. ft	Yes
10	Bath	5'10" x 10'0"	57 sq. ft	Yes
11	Kitchen	9'6" x 9'11"	94 sq. ft	Yes
12	Dining Area	7'10" x 9'11"	75 sq. ft	Yes
13	Bedroom	8'10" x 11'6"	102 sq. ft	Yes
14	Entry	2'10" x 3'5"	19 sq. ft	Yes

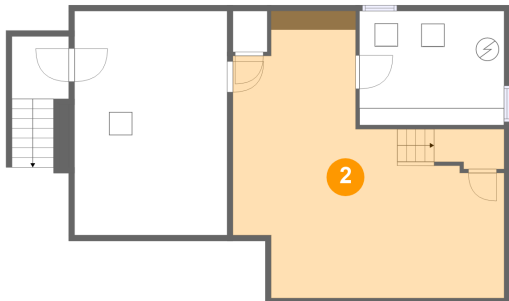
1 Floor 1 - Utility



Max Dimensions: 12'6" x 9'11"
Calculated Area: 124 sq. ft
Included: No

Heated: Yes
Finished: No
Enclosed: Yes
Contiguous: Yes
Permitted: Yes
Wet space: No
Addition: No
Conversion: No

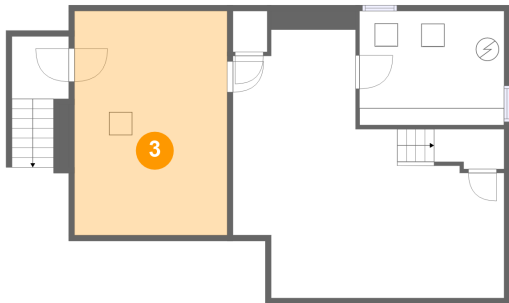
2 Floor 1 - Basement



Max Dimensions: 23'6" x 23'3"
Calculated Area: 420 sq. ft
Included: No

Heated: Yes
Finished: Yes
Enclosed: Yes
Contiguous: No
Permitted: Yes
Wet space: No
Addition: No
Conversion: No

3 Floor 1 - Storage



Max Dimensions: 13'3" x 19'5"
Calculated Area: 256 sq. ft
Included: No

Heated: No
Finished: No
Enclosed: No
Contiguous: Yes
Permitted: Yes
Wet space: No
Addition: No
Conversion: No

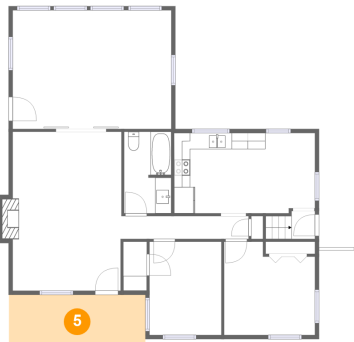
4 Floor 2 - Bedroom



Max Dimensions: 11'2" x 11'6"
Calculated Area: 117 sq. ft
Included: Yes

Heated: Yes
Finished: Yes
Enclosed: Yes
Contiguous: Yes
Permitted: Yes
Wet space: No
Addition: No
Conversion: No

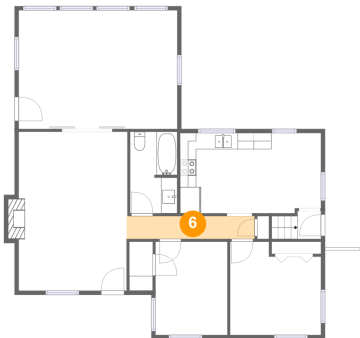
5 Floor 2 - Porch



Max Dimensions: 16'10" x 6'4"
Calculated Area: 106 sq. ft
Included: No

Heated: No
Finished: Yes
Enclosed: No
Contiguous: Yes
Permitted: Yes
Wet space: No
Addition: No
Conversion: No

6 Floor 2 - Hall



Max Dimensions: 15'9" x 2'10"
Calculated Area: 44 sq. ft
Included: Yes

Heated: Yes
Finished: Yes
Enclosed: Yes
Contiguous: Yes
Permitted: Yes
Wet space: No
Addition: No
Conversion: No

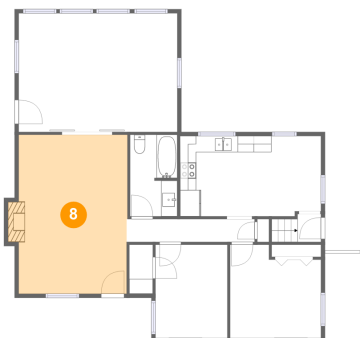
7 Floor 2 - Porch



Max Dimensions: 4'4" x 5'3"
Calculated Area: 22 sq. ft
Included: No

Heated: No
Finished: Yes
Enclosed: No
Contiguous: Yes
Permitted: Yes
Wet space: No
Addition: No
Conversion: No

8 Floor 2 - Living Room



Max Dimensions: 13'5" x 19'7"
Calculated Area: 267 sq. ft
Included: Yes

Heated: Yes
Finished: Yes
Enclosed: Yes
Contiguous: Yes
Permitted: Yes
Wet space: No
Addition: No
Conversion: No

9 Floor 2 - Family Room



Max Dimensions: 19'6" x 14'7"
Calculated Area: 285 sq. ft
Included: Yes

Heated: Yes
Finished: Yes
Enclosed: Yes
Contiguous: Yes
Permitted: Yes
Wet space: No
Addition: No
Conversion: No

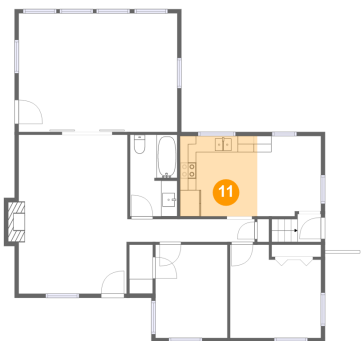
10 Floor 2 - Bath



Max Dimensions: 5'10" x 10'0"
Calculated Area: 57 sq. ft
Included: Yes

Heated: Yes
Finished: Yes
Enclosed: Yes
Contiguous: Yes
Permitted: Yes
Wet space: Yes
Addition: No
Conversion: No

11 Floor 2 - Kitchen



Max Dimensions: 9'6" x 9'11"
Calculated Area: 94 sq. ft
Included: Yes

Heated: Yes
Finished: Yes
Enclosed: Yes
Contiguous: Yes
Permitted: Yes
Wet space: No
Addition: No
Conversion: No

7151 Pine Needle Drive, Boones Mill, Roanoke County, Virginia,
United States, 24065

12 Floor 2 - Dining Area



Max Dimensions: 7'10" x 9'11"
Calculated Area: 75 sq. ft
Included: Yes

Heated: Yes
Finished: Yes
Enclosed: Yes
Contiguous: Yes
Permitted: Yes
Wet space: No
Addition: No
Conversion: No

13 Floor 2 - Bedroom



Max Dimensions: 8'10" x 11'6"
Calculated Area: 102 sq. ft
Included: Yes

Heated: Yes
Finished: Yes
Enclosed: Yes
Contiguous: Yes
Permitted: Yes
Wet space: No
Addition: No
Conversion: No

14 Floor 2 - Entry



Max Dimensions: 2'10" x 3'5"
Calculated Area: 19 sq. ft
Included: Yes

Heated: Yes
Finished: Yes
Enclosed: Yes
Contiguous: Yes
Permitted: Yes
Wet space: No
Addition: No
Conversion: No