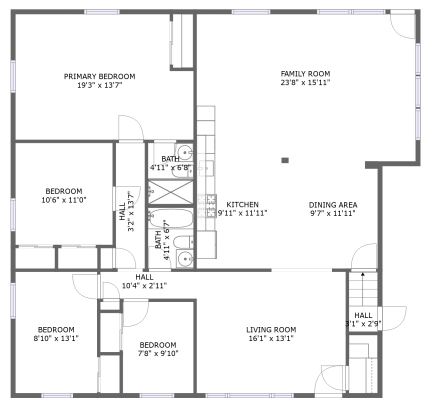
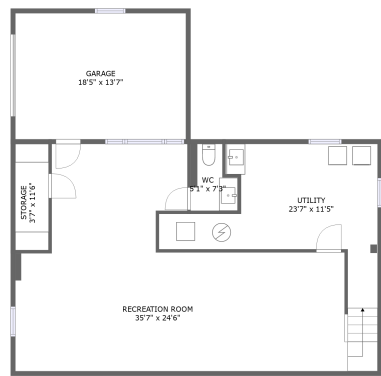


Home report

7533 Dover Lane, Lanham, Prince George's County, Maryland,
United States, 20706





FLOOR 2





FLOOR 1

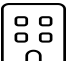
Property summary


 **1** Garages


 **4** Bedrooms

 **2** Bathrooms

 **1** Half baths

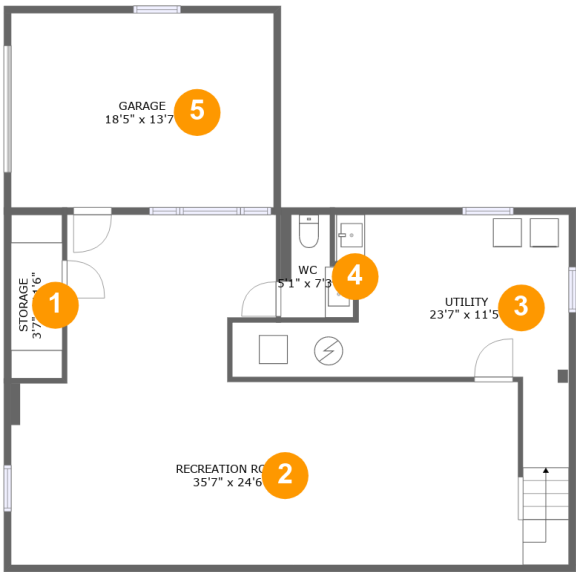
 **2** Floors

 **1,751** Gross living area sqft

 **3,050** Total sqft

Home report

7533 Dover Lane, Lanham, Prince George's County, Maryland,
United States, 20706



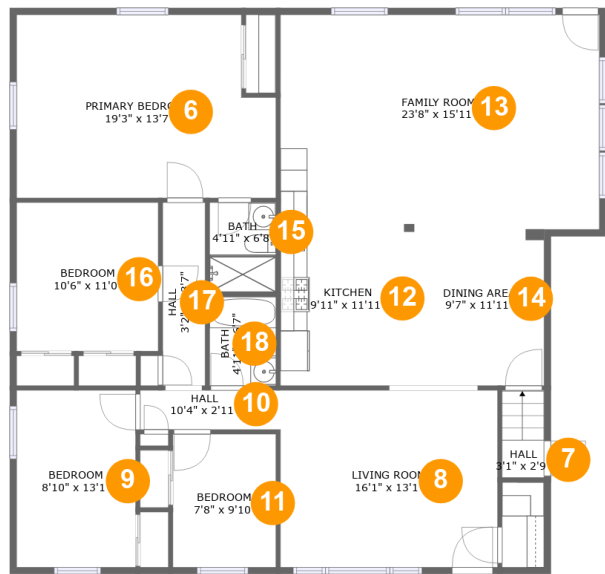
Room dimensions

Floor 1 Total sqft: 1299 Living area: 0

#		Max Dimensions	sqft	Included
1	Storage	3'7" x 11'6"	41 sq. ft	No
2	Recreation Room	35'7" x 24'6"	636 sq. ft	No
3	Utility	23'7" x 11'5"	228 sq. ft	No
4	WC	5'1" x 7'3"	31 sq. ft	No
5	Garage	18'5" x 13'7"	251 sq. ft	No

Home report

7533 Dover Lane, Lanham, Prince George's County, Maryland,
United States, 20706



Room dimensions

Floor 2 Total sqft: 1751 Living area: 1751

#		Max Dimensions	sqft	Included
6	Primary Bedroom	19'3" x 13'7"	245 sq. ft	Yes
7	Hall	3'1" x 2'9"	20 sq. ft	Yes
8	Living Room	16'1" x 13'1"	211 sq. ft	Yes
9	Bedroom	8'10" x 13'1"	116 sq. ft	Yes
10	Hall	10'4" x 2'11"	30 sq. ft	Yes
11	Bedroom	7'8" x 9'10"	75 sq. ft	Yes
12	Kitchen	9'11" x 11'11"	116 sq. ft	Yes
13	Family Room	23'8" x 15'11"	376 sq. ft	Yes
14	Dining Area	9'7" x 11'11"	113 sq. ft	Yes
15	Bath	4'11" x 6'8"	33 sq. ft	Yes
16	Bedroom	10'6" x 11'0"	116 sq. ft	Yes

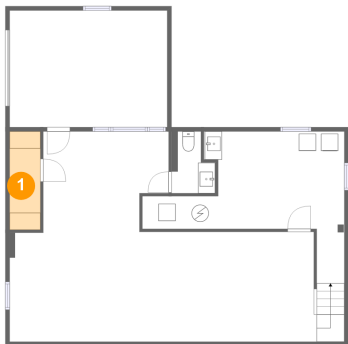
Home report

7533 Dover Lane, Lanham, Prince George's County, Maryland,
United States, 20706

#		Max Dimensions	sqft	Included
17	Hall	3'2" x 13'7"	43 sq. ft	Yes
18	Bath	4'11" x 6'7"	32 sq. ft	Yes

7533 Dover Lane, Lanham, Prince George's County, Maryland,
United States, 20706

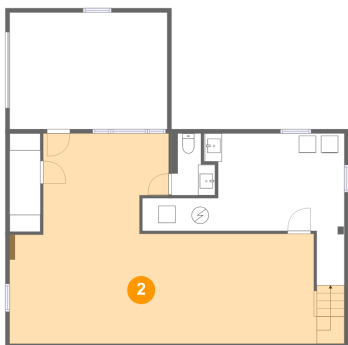
1 Floor 1 - Storage



Max Dimensions: 3'7" x 11'6"
Calculated Area: 41 sq. ft
Included: No

Heated: No
Finished: No
Enclosed: No
Contiguous: Yes
Permitted: Yes
Wet space: No
Addition: No
Conversion: No

2 Floor 1 - Recreation Room

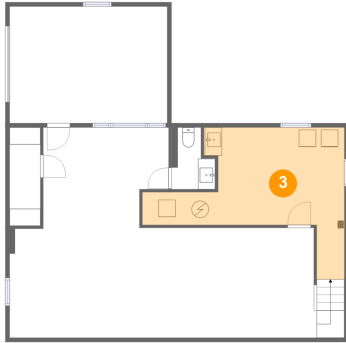


Max Dimensions: 35'7" x 24'6"
Calculated Area: 636 sq. ft
Included: No

Heated: Yes
Finished: Yes
Enclosed: Yes
Contiguous: No
Permitted: Yes
Wet space: No
Addition: No
Conversion: No

7533 Dover Lane, Lanham, Prince George's County, Maryland,
United States, 20706

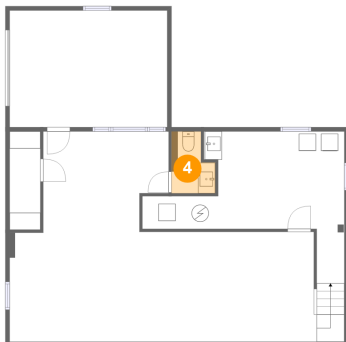
3 Floor 1 - Utility



Max Dimensions: 23'7" x 11'5"
Calculated Area: 228 sq. ft
Included: No

Heated: Yes
Finished: No
Enclosed: Yes
Contiguous: Yes
Permitted: Yes
Wet space: No
Addition: No
Conversion: No

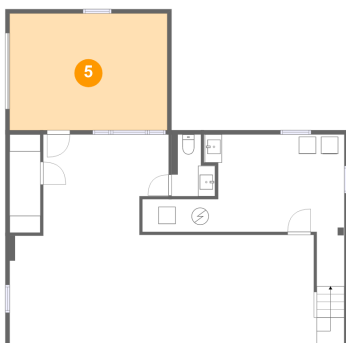
4 Floor 1 - WC



Max Dimensions: 5'1" x 7'3"
Calculated Area: 31 sq. ft
Included: No

Heated: Yes
Finished: Yes
Enclosed: Yes
Contiguous: No
Permitted: Yes
Wet space: Yes
Addition: No
Conversion: No

5 Floor 1 - Garage

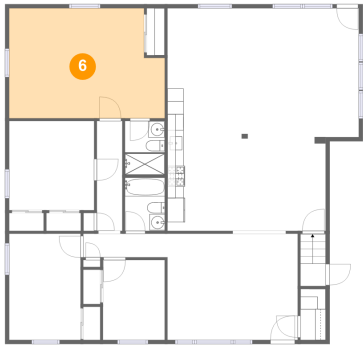


Max Dimensions: 18'5" x 13'7"
Calculated Area: 251 sq. ft
Included: No

Heated: No
Finished: No
Enclosed: Yes
Contiguous: Yes
Permitted: Yes
Wet space: No
Addition: No
Conversion: No

7533 Dover Lane, Lanham, Prince George's County, Maryland,
United States, 20706

6 Floor 2 - Primary Bedroom



Max Dimensions: 19'3" x 13'7"
Calculated Area: 245 sq. ft
Included: Yes

Heated: Yes
Finished: Yes
Enclosed: Yes
Contiguous: Yes
Permitted: Yes
Wet space: No
Addition: No
Conversion: No

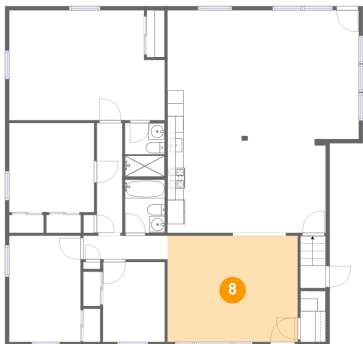
7 Floor 2 - Hall



Max Dimensions: 3'1" x 2'9"
Calculated Area: 20 sq. ft
Included: Yes

Heated: Yes
Finished: Yes
Enclosed: Yes
Contiguous: Yes
Permitted: Yes
Wet space: No
Addition: No
Conversion: No

8 Floor 2 - Living Room

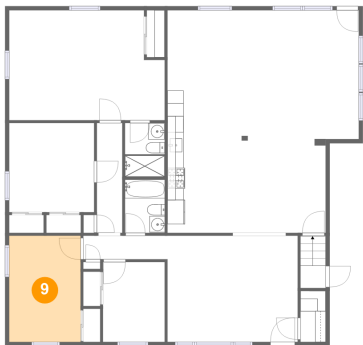


Max Dimensions: 16'1" x 13'1"
Calculated Area: 211 sq. ft
Included: Yes

Heated: Yes
Finished: Yes
Enclosed: Yes
Contiguous: Yes
Permitted: Yes
Wet space: No
Addition: No
Conversion: No

7533 Dover Lane, Lanham, Prince George's County, Maryland,
United States, 20706

9 Floor 2 - Bedroom



Max Dimensions: 8'10" x 13'1"
Calculated Area: 116 sq. ft
Included: Yes

Heated: Yes
Finished: Yes
Enclosed: Yes
Contiguous: Yes
Permitted: Yes
Wet space: No
Addition: No
Conversion: No

10 Floor 2 - Hall



Max Dimensions: 10'4" x 2'11"
Calculated Area: 30 sq. ft
Included: Yes

Heated: Yes
Finished: Yes
Enclosed: Yes
Contiguous: Yes
Permitted: Yes
Wet space: No
Addition: No
Conversion: No

11 Floor 2 - Bedroom

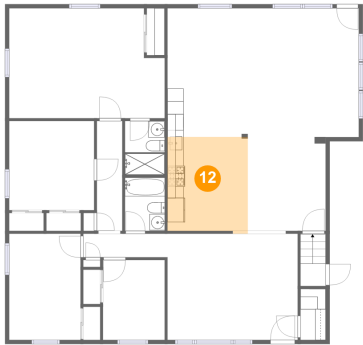


Max Dimensions: 7'8" x 9'10"
Calculated Area: 75 sq. ft
Included: Yes

Heated: Yes
Finished: Yes
Enclosed: Yes
Contiguous: Yes
Permitted: Yes
Wet space: No
Addition: No
Conversion: No

7533 Dover Lane, Lanham, Prince George's County, Maryland,
United States, 20706

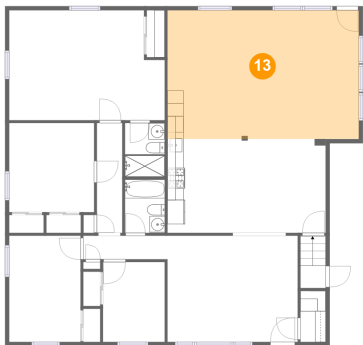
12 Floor 2 - Kitchen



Max Dimensions: 9'11" x 11'11"
Calculated Area: 116 sq. ft
Included: Yes

Heated: Yes
Finished: Yes
Enclosed: Yes
Contiguous: Yes
Permitted: Yes
Wet space: No
Addition: No
Conversion: No

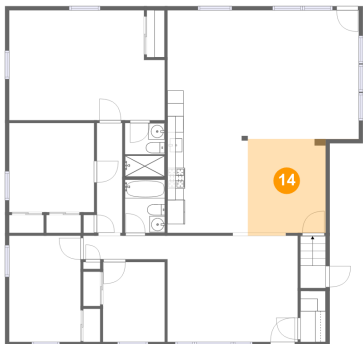
13 Floor 2 - Family Room



Max Dimensions: 23'8" x 15'11"
Calculated Area: 376 sq. ft
Included: Yes

Heated: Yes
Finished: Yes
Enclosed: Yes
Contiguous: Yes
Permitted: Yes
Wet space: No
Addition: No
Conversion: No

14 Floor 2 - Dining Area



Max Dimensions: 9'7" x 11'11"
Calculated Area: 113 sq. ft
Included: Yes

Heated: Yes
Finished: Yes
Enclosed: Yes
Contiguous: Yes
Permitted: Yes
Wet space: No
Addition: No
Conversion: No

7533 Dover Lane, Lanham, Prince George's County, Maryland,
United States, 20706

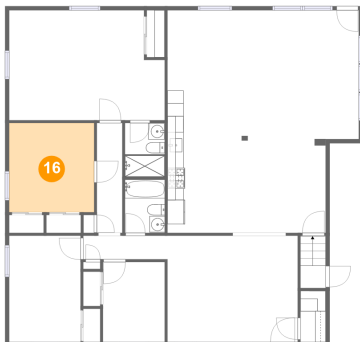
15 Floor 2 - Bath



Max Dimensions: 4'11" x 6'8"
Calculated Area: 33 sq. ft
Included: Yes

Heated: Yes
Finished: Yes
Enclosed: Yes
Contiguous: Yes
Permitted: Yes
Wet space: Yes
Addition: No
Conversion: No

16 Floor 2 - Bedroom



Max Dimensions: 10'6" x 11'0"
Calculated Area: 116 sq. ft
Included: Yes

Heated: Yes
Finished: Yes
Enclosed: Yes
Contiguous: Yes
Permitted: Yes
Wet space: No
Addition: No
Conversion: No

17 Floor 2 - Hall



Max Dimensions: 3'2" x 13'7"
Calculated Area: 43 sq. ft
Included: Yes

Heated: Yes
Finished: Yes
Enclosed: Yes
Contiguous: Yes
Permitted: Yes
Wet space: No
Addition: No
Conversion: No

7533 Dover Lane, Lanham, Prince George's County, Maryland,
United States, 20706

18 Floor 2 - Bath



Max Dimensions: 4'11" x 6'7"
Calculated Area: 32 sq. ft
Included: Yes

Heated: Yes
Finished: Yes
Enclosed: Yes
Contiguous: Yes
Permitted: Yes
Wet space: Yes
Addition: No
Conversion: No