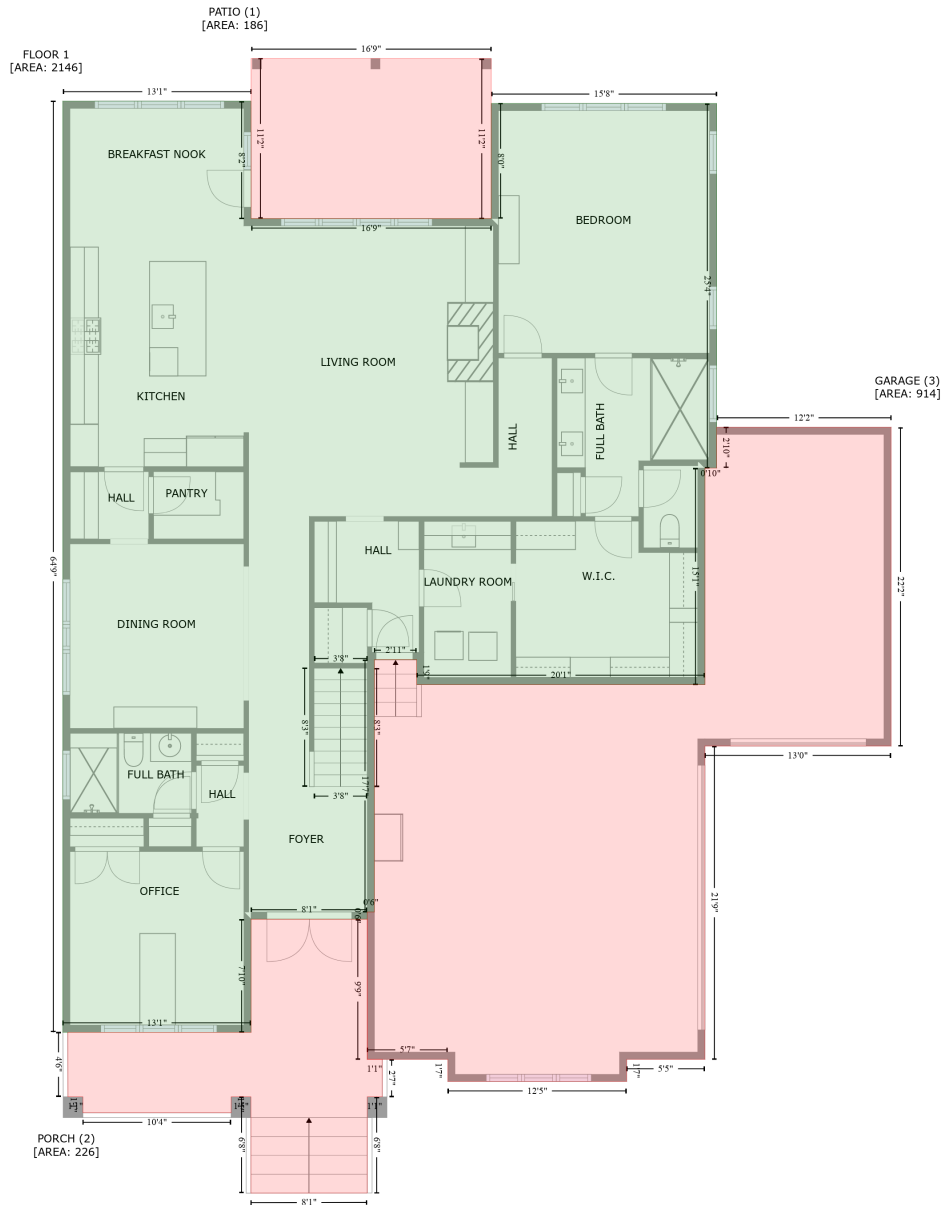


409 Teague Street, Wake Forest, Wake County, North Carolina, United States, 27587

Gross Living Area: 4057 sq. ft



Space	Area (sq. ft)	Calculation
FLOOR 1 (Living area)	2146	Coordinate Polygon Area Algorithm using inches $-((314.3 + 314.3) * (270.4 - 368.4) + (314.3 + 514.9) * (368.4 - 368.4) + (514.9 + 514.9) * (368.4 - 272.3) + (514.9 + 703.2) * (272.3 - 272.3) + (703.2 + 703.2) * (272.3 - 576.5) + (703.2 + 693.4) * (576.5 - 576.5) + (693.4 + 693.4) * (576.5 - 757.2) + (693.4 + 452.7) * (757.2 - 757.2) + (452.7 + 452.7) * (757.2 - 736.3) + (452.7 + 417.3) * (736.3 - 736.3) + (417.3 + 417.3) * (736.3 - 946.9) + (417.3 + 411.3) * (946.9 - 946.9) + (411.3 + 411.3) * (946.9 - 952.9) + (411.3 + 314.3) * (952.9 - 952.9) + (314.3 + 314.3) * (952.9 - 1047.2) + (314.3 + 157) * (1047.2 - 1047.2) + (157 + 157) * (1047.2 - 270.4) + (157 + 314.3) * (270.4 - 270.4)) * 0.5 * 0.00694$

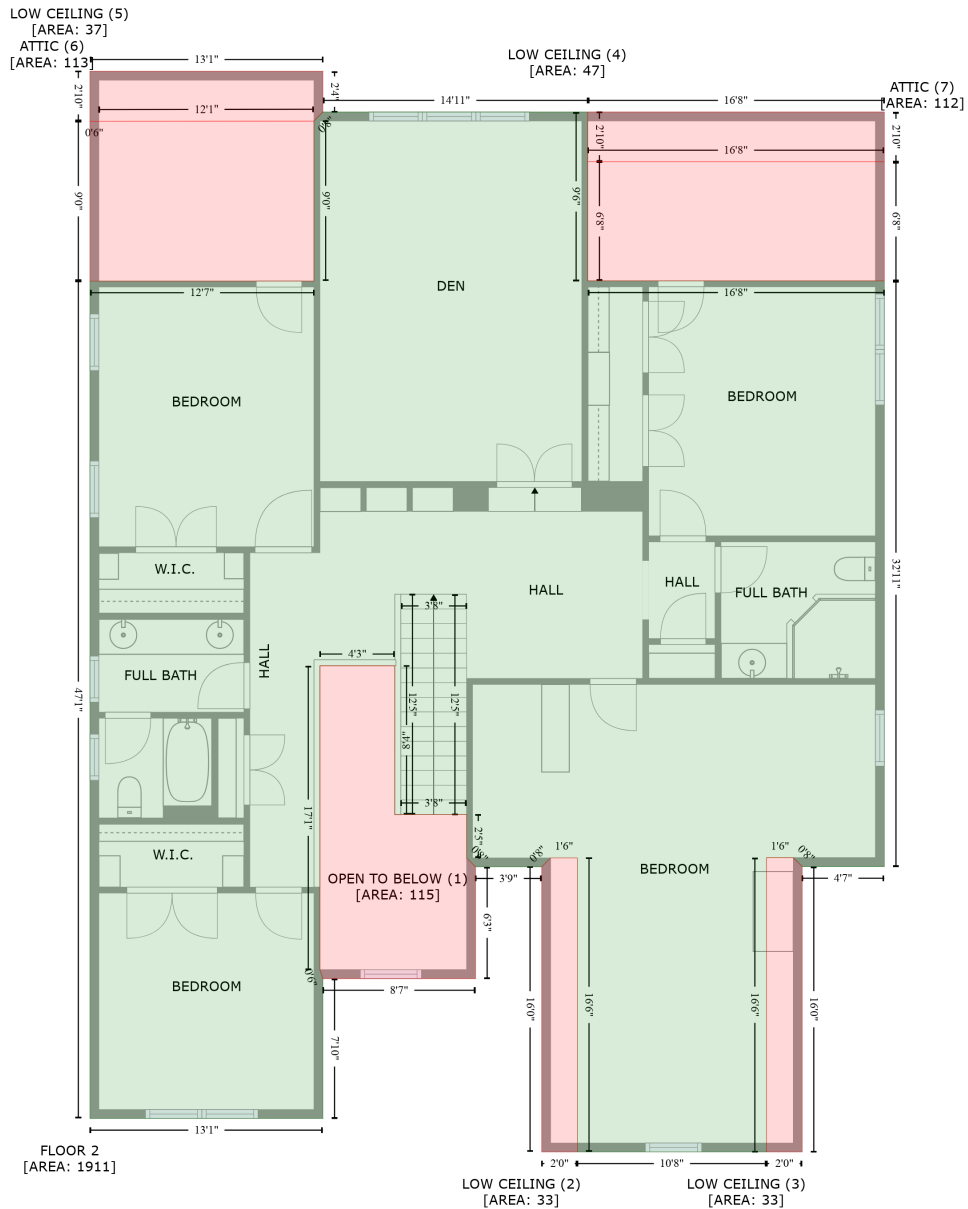
409 Teague Street, Wake Forest, Wake County, North Carolina, United States, 27587

Gross Living Area: 4057 sq. ft

Space	Area (sq. ft)	Calculation <small>Coordinate Polygon Area Algorithm using inches</small>
PATIO (Non-living area)	186	$-((514.9 + 514.9) * (234.8 - 368.4) + (514.9 + 314.3) * (368.4 - 368.4) + (314.3 + 314.3) * (368.4 - 234.8) + (314.3 + 514.9) * (234.8 - 234.8)) * 0.5 * 0.00694$
PORCH (Non-living area)	226	$-((314.3 + 411.3) * (952.9 - 952.9) + (411.3 + 411.3) * (952.9 - 1069.8) + (411.3 + 423.8) * (1069.8 - 1069.8) + (423.8 + 423.8) * (1069.8 - 1101.1) + (423.8 + 411.3) * (1101.1 - 1101.1) + (411.3 + 411.3) * (1101.1 - 1181.3) + (411.3 + 314.2) * (1181.3 - 1181.4) + (314.2 + 314.2) * (1181.4 - 1101.1) + (314.2 + 297.6) * (1101.1 - 1101.1) + (297.6 + 297.6) * (1101.1 - 1114.4) + (297.6 + 173.8) * (1114.4 - 1114.4) + (173.8 + 173.8) * (1114.4 - 1101.1) + (173.8 + 161.3) * (1101.1 - 1101.1) + (161.3 + 161.3) * (1101.1 - 1047.2) + (161.3 + 314.3) * (1047.2 - 1047.2) + (314.3 + 314.3) * (1047.2 - 952.9)) * 0.5 * 0.00694$
GARAGE (Non-living area)	914	$-((848.9 + 848.9) * (542.4 - 808.4) + (848.9 + 693.4) * (808.4 - 808.4) + (693.4 + 693.4) * (808.4 - 1069.8) + (693.4 + 628) * (1069.8 - 1069.8) + (628 + 628) * (1069.8 - 1088.3) + (628 + 478.6) * (1088.3 - 1088.3) + (478.6 + 478.6) * (1088.3 - 1069.8) + (478.6 + 411.3) * (1069.8 - 1069.8) + (411.3 + 411.3) * (1069.8 - 946.9) + (411.3 + 417.3) * (946.9 - 946.9) + (417.3 + 417.3) * (946.9 - 736.3) + (417.3 + 452.7) * (736.3 - 736.3) + (452.7 + 452.7) * (736.3 - 757.2) + (452.7 + 693.4) * (757.2 - 757.2) + (693.4 + 693.4) * (757.2 - 576.5) + (693.4 + 703.2) * (576.5 - 576.5) + (703.2 + 703.2) * (576.5 - 542.4) + (703.2 + 848.9) * (542.4 - 542.4)) * 0.5 * 0.00694$

409 Teague Street, Wake Forest, Wake County, North Carolina, United States, 27587

Gross Living Area: 4057 sq. ft



Space

Area (sq. ft)

Calculation Coordinate Polygon Area Algorithm using inches

FLOOR 2
(Living area)

1911

$-\left((493.2 + 493.2) * (368.4 - 482.3) + (493.2 + 693.4) * (482.3 - 482.3) + (693.4 + 693.4) * (482.3 - 877.3) + (693.4 + 637.9) * (877.3 - 877.3) + (637.9 + 631.9) * (877.3 - 871.3) + (631.9 + 613.9) * (871.3 - 871.3) + (613.9 + 613.9) * (871.3 - 1069.8) + (613.9 + 486.1) * (1069.8 - 1069.8) + (486.1 + 486.1) * (1069.8 - 871.5) + (486.1 + 468.1) * (871.5 - 871.5) + (468.1 + 462.1) * (871.5 - 877.5) + (462.1 + 417.3) * (877.5 - 877.5) + (417.3 + 411.3) * (877.5 - 871.5) + (411.3 + 411.3) * (871.5 - 842.3) + (411.3 + 362.9) * (842.3 - 842.3) + (362.9 + 362.9) * (842.3 - 741.9) + (362.9 + 312.3) * (741.9 - 741.9) + (312.3 + 312.3) * (741.9 - 946.9) + (312.3 + 314.3) * (946.9 - 952.9) + \right.$

409 Teague Street, Wake Forest, Wake County, North Carolina, United States, 27587

Gross Living Area: 4057 sq. ft

Space	Area (sq. ft)	Calculation <small>Coordinate Polygon Area Algorithm using inches</small>
OPEN TO BELOW (Non-living area)	115	$(314.3 + 314.3) * (952.9 - 1047.2) + (314.3 + 157) * (1047.2 - 1047.2) + (157 + 157) * (1047.2 - 482.4) + (157 + 308.3) * (482.4 - 482.4) + (308.3 + 308.3) * (482.4 - 374.4) + (308.3 + 314.3) * (374.4 - 368.4) + (314.3 + 493.2) * (368.4 - 368.4) * 0.5 * 0.00694$
LOW CEILING (Non-living area)	33	$-((362.9 + 362.9) * (741.9 - 842.3) + (362.9 + 411.3) * (842.3 - 842.3) + (411.3 + 411.3) * (842.3 - 871.5) + (411.3 + 417.3) * (871.5 - 877.5) + (417.3 + 417.3) * (877.5 - 952.9) + (417.3 + 314.3) * (952.9 - 952.9) + (314.3 + 312.3) * (952.9 - 946.9) + (312.3 + 312.3) * (946.9 - 741.9) + (312.3 + 362.9) * (741.9 - 741.9)) * 0.5 * 0.00694$
LOW CEILING (Non-living area)	33	$-((486.1 + 486.1) * (871.5 - 1069.8) + (486.1 + 462.1) * (1069.8 - 1069.8) + (462.1 + 462.1) * (1069.8 - 877.5) + (462.1 + 468.1) * (877.5 - 871.5) + (468.1 + 486.1) * (871.5 - 871.5)) * 0.5 * 0.00694$
LOW CEILING (Non-living area)	33	$-((631.9 + 637.9) * (871.3 - 877.3) + (637.9 + 637.9) * (877.3 - 1069.8) + (637.9 + 613.9) * (1069.8 - 1069.8) + (613.9 + 613.9) * (1069.8 - 871.3) + (613.9 + 631.9) * (871.3 - 871.3)) * 0.5 * 0.00694$
LOW CEILING (Non-living area)	47	$-((693.4 + 693.4) * (368.4 - 402) + (693.4 + 493.2) * (402 - 402) + (493.2 + 493.2) * (402 - 368.4) + (493.2 + 693.4) * (368.4 - 368.4)) * 0.5 * 0.00694$
LOW CEILING (Non-living area)	37	$-((314.3 + 314.3) * (340.9 - 368.4) + (314.3 + 308.3) * (368.4 - 374.4) + (308.3 + 163) * (374.4 - 374.7) + (163 + 157) * (374.7 - 374.7) + (157 + 157) * (374.7 - 340.9) + (157 + 314.3) * (340.9 - 340.9)) * 0.5 * 0.00694$
ATTIC (Non-living area)	113	$-((308.3 + 308.3) * (374.7 - 482.4) + (308.3 + 157) * (482.4 - 482.4) + (157 + 157) * (482.4 - 374.7) + (157 + 308.3) * (374.7 - 374.7)) * 0.5 * 0.00694$
ATTIC (Non-living area)	112	$-((693.4 + 693.4) * (402 - 482.3) + (693.4 + 493.2) * (482.3 - 482.3) + (493.2 + 493.2) * (482.3 - 402) + (493.2 + 693.4) * (402 - 402)) * 0.5 * 0.00694$