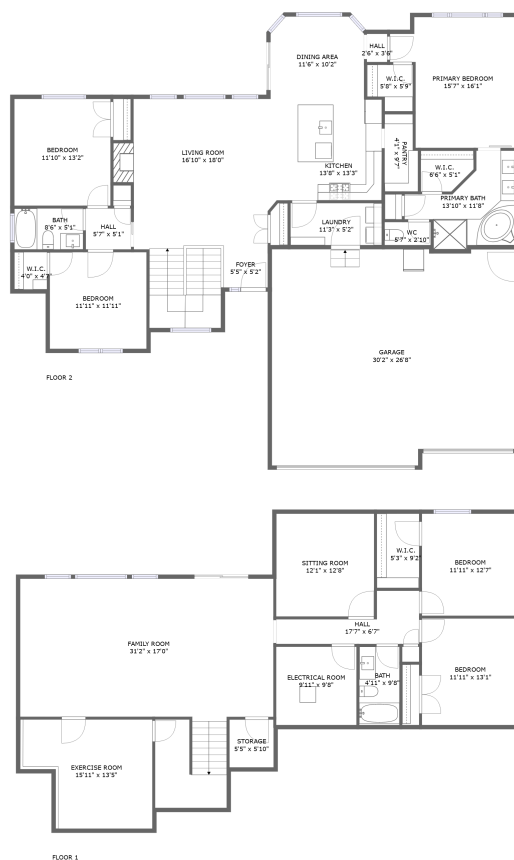


# 2338 Torben Ct, Cheyenne, WY, US



## Property summary


 **1** Garages

 **5** Bedrooms

 **3** Bathrooms

 **0** Half baths

 **2** Floors

 **3,417** Gross living area sqft

 **4,369** Total sqft

# 2338 Torben Ct, Cheyenne, WY, US

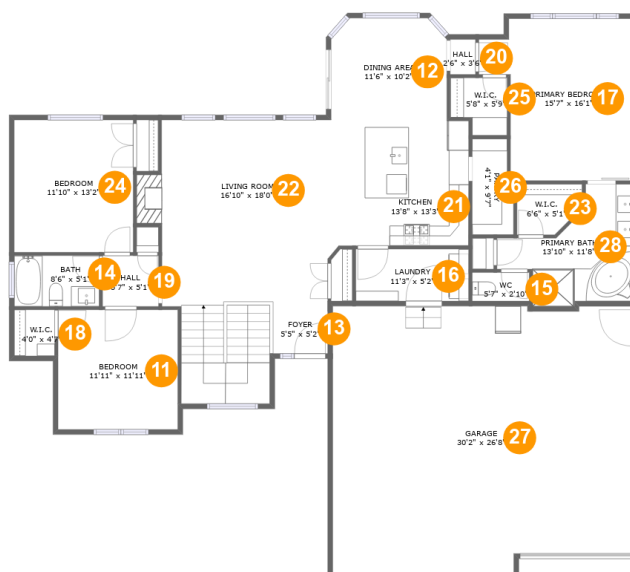


## Room dimensions

Floor 1

Total sqft: 1744 Living area: 1607

#		Dimensions	sqft	Counted as living area
1	Bedroom	11'11" x 13'1"	156 sq. ft	Yes
2	Bedroom	11'11" x 12'7"	150 sq. ft	Yes
3	Storage	5'5" x 5'10"	32 sq. ft	No
4	Hall	17'7" x 6'7"	72 sq. ft	Yes
5	Exercise Room	15'11" x 13'5"	187 sq. ft	Yes
6	Cl	5'3" x 9'2"	48 sq. ft	Yes
7	Room	9'11" x 9'8"	95 sq. ft	No
8	Living Room	31'2" x 17'0"	530 sq. ft	Yes
9	Bath	4'11" x 9'8"	48 sq. ft	Yes
10	Living Room	12'1" x 12'8"	152 sq. ft	Yes

**2338 Torben Ct, Cheyenne, WY, US****Room dimensions**

Floor 2

Total sqft: 2625 Living area: 1810

#		Dimensions	sqft	Counted as living area
11	Bedroom	11'11" x 11'11"	142 sq. ft	Yes
12	Dining Room	11'6" x 10'2"	113 sq. ft	Yes
13	Entry	5'5" x 5'2"	120 sq. ft	Yes
14	Bath	8'6" x 5'1"	43 sq. ft	Yes
15	Bath	5'7" x 2'10"	16 sq. ft	Yes
16	Utility	11'3" x 5'2"	58 sq. ft	Yes
17	Bedroom	15'7" x 16'1"	212 sq. ft	Yes
18	Cl	4'0" x 4'7"	18 sq. ft	Yes
19	Hall	5'7" x 5'1"	28 sq. ft	Yes
20	Hall	2'6" x 3'6"	9 sq. ft	Yes
21	Kitchen	13'8" x 13'3"	172 sq. ft	Yes

**2338 Torben Ct,Cheyenne,WY,US**

#		Dimensions	sqft	Counted as living area
22	Living Room	16'10" x 18'0"	315 sq. ft	Yes
23	Cl	6'6" x 5'1"	29 sq. ft	Yes
24	Bedroom	11'10" x 13'2"	156 sq. ft	Yes
25	Cl	5'8" x 5'9"	29 sq. ft	Yes
26	Pantry	4'1" x 9'7"	36 sq. ft	Yes
27	Garage	30'2" x 26'8"	776 sq. ft	No
28	Bath	13'10" x 11'8"	109 sq. ft	Yes

### 1 Floor 1 - Bedroom



Dimensions: 11'11" x 13'1"  
Area: 156 sq. ft  
Counted as living area: Yes

Heated: Yes  
Finished: Yes  
Enclosed: Yes  
Contiguous: Yes  
Permitted: Yes  
Wet space: No  
Addition: No  
Conversion: No

### 2 Floor 1 - Bedroom



Dimensions: 11'11" x 12'7"  
Area: 150 sq. ft  
Counted as living area: Yes

Heated: Yes  
Finished: Yes  
Enclosed: Yes  
Contiguous: Yes  
Permitted: Yes  
Wet space: No  
Addition: No  
Conversion: No

# 2338 Torben Ct, Cheyenne, WY, US

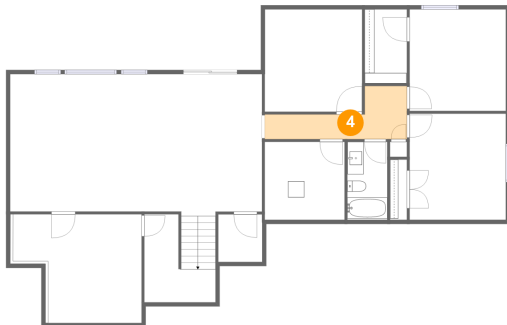
## 3 Floor 1 - Storage



Dimensions: 5'5" x 5'10"  
Area: 32 sq. ft  
Counted as living area: No

Heated: No  
Finished: No  
Enclosed: No  
Contiguous: Yes  
Permitted: Yes  
Wet space: No  
Addition: No  
Conversion: No

## 4 Floor 1 - Hall



Dimensions: 17'7" x 6'7"  
Area: 72 sq. ft  
Counted as living area: Yes

Heated: Yes  
Finished: Yes  
Enclosed: Yes  
Contiguous: Yes  
Permitted: Yes  
Wet space: No  
Addition: No  
Conversion: No

## 5 Floor 1 - Exercise Room

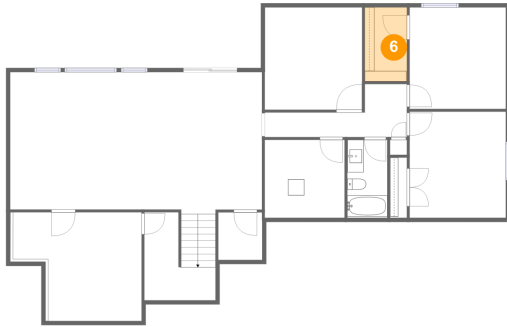


Dimensions: 15'11" x 13'5"  
Area: 187 sq. ft  
Counted as living area: Yes

Heated: Yes  
Finished: Yes  
Enclosed: Yes  
Contiguous: Yes  
Permitted: Yes  
Wet space: No  
Addition: No  
Conversion: No

# 2338 Torben Ct, Cheyenne, WY, US

## 6 Floor 1 - Cl



Dimensions: 5'3" x 9'2"  
Area: 48 sq. ft  
Counted as living area: Yes

Heated: Yes  
Finished: Yes  
Enclosed: Yes  
Contiguous: Yes  
Permitted: Yes  
Wet space: No  
Addition: No  
Conversion: No

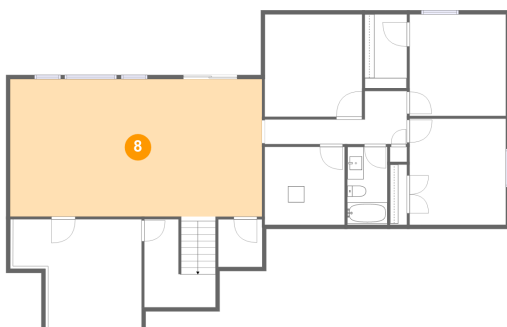
## 7 Floor 1 - Room



Dimensions: 9'11" x 9'8"  
Area: 95 sq. ft  
Counted as living area: No

Heated: No  
Finished: No  
Enclosed: Yes  
Contiguous: Yes  
Permitted: Yes  
Wet space: No  
Addition: No  
Conversion: No

## 8 Floor 1 - Living Room



Dimensions: 31'2" x 17'0"  
Area: 530 sq. ft  
Counted as living area: Yes

Heated: Yes  
Finished: Yes  
Enclosed: Yes  
Contiguous: Yes  
Permitted: Yes  
Wet space: No  
Addition: No  
Conversion: No

# 2338 Torben Ct, Cheyenne, WY, US

## 9 Floor 1 - Bath



Dimensions: 4'11" x 9'8"  
Area: 48 sq. ft  
Counted as living area: Yes

Heated: Yes  
Finished: Yes  
Enclosed: Yes  
Contiguous: Yes  
Permitted: Yes  
Wet space: Yes  
Addition: No  
Conversion: No

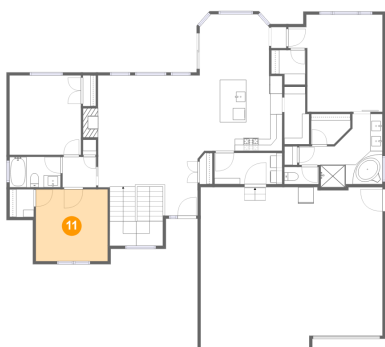
## 10 Floor 1 - Living Room



Dimensions: 12'1" x 12'8"  
Area: 152 sq. ft  
Counted as living area: Yes

Heated: Yes  
Finished: Yes  
Enclosed: Yes  
Contiguous: Yes  
Permitted: Yes  
Wet space: No  
Addition: No  
Conversion: No

## 11 Floor 2 - Bedroom

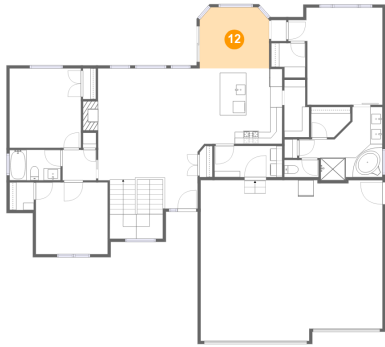


Dimensions: 11'11" x 11'11"  
Area: 142 sq. ft  
Counted as living area: Yes

Heated: Yes  
Finished: Yes  
Enclosed: Yes  
Contiguous: Yes  
Permitted: Yes  
Wet space: No  
Addition: No  
Conversion: No



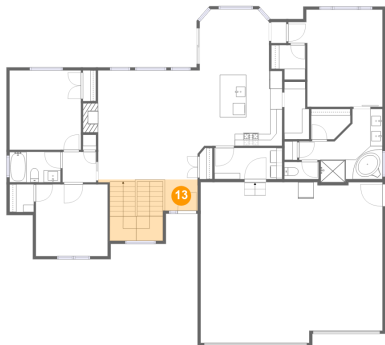
## 12 Floor 2 - Dining Room



Dimensions: 11'6" x 10'2"  
Area: 113 sq. ft  
Counted as living area: Yes

Heated: Yes  
Finished: Yes  
Enclosed: Yes  
Contiguous: Yes  
Permitted: Yes  
Wet space: No  
Addition: No  
Conversion: No

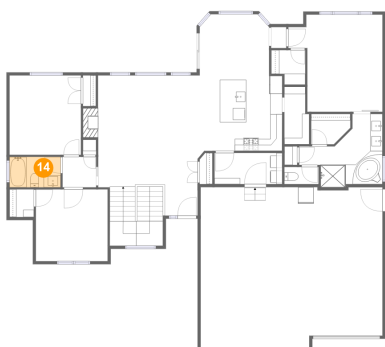
## 13 Floor 2 - Entry



Dimensions: 5'5" x 5'2"  
Area: 120 sq. ft  
Counted as living area: Yes

Heated: Yes  
Finished: Yes  
Enclosed: Yes  
Contiguous: Yes  
Permitted: Yes  
Wet space: No  
Addition: No  
Conversion: No

## 14 Floor 2 - Bath

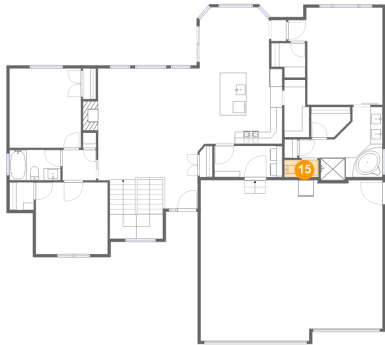


Dimensions: 8'6" x 5'1"  
Area: 43 sq. ft  
Counted as living area: Yes

Heated: Yes  
Finished: Yes  
Enclosed: Yes  
Contiguous: Yes  
Permitted: Yes  
Wet space: Yes  
Addition: No  
Conversion: No

# 2338 Torben Ct, Cheyenne, WY, US

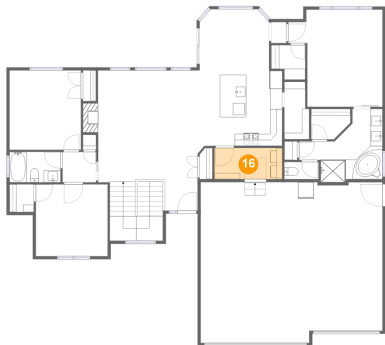
## 15 Floor 2 - Bath



**Dimensions:** 5'7" x 2'10"  
**Area:** 16 sq. ft  
**Counted as living area:** Yes

**Heated:** Yes  
**Finished:** Yes  
**Enclosed:** Yes  
**Contiguous:** Yes  
**Permitted:** Yes  
**Wet space:** Yes  
**Addition:** No  
**Conversion:** No

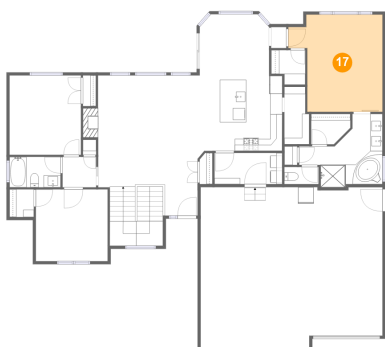
## 16 Floor 2 - Utility



**Dimensions:** 11'3" x 5'2"  
**Area:** 58 sq. ft  
**Counted as living area:** Yes

**Heated:** Yes  
**Finished:** Yes  
**Enclosed:** Yes  
**Contiguous:** Yes  
**Permitted:** Yes  
**Wet space:** No  
**Addition:** No  
**Conversion:** No

## 17 Floor 2 - Bedroom



**Dimensions:** 15'7" x 16'1"  
**Area:** 212 sq. ft  
**Counted as living area:** Yes

**Heated:** Yes  
**Finished:** Yes  
**Enclosed:** Yes  
**Contiguous:** Yes  
**Permitted:** Yes  
**Wet space:** No  
**Addition:** No  
**Conversion:** No

# 2338 Torben Ct, Cheyenne, WY, US

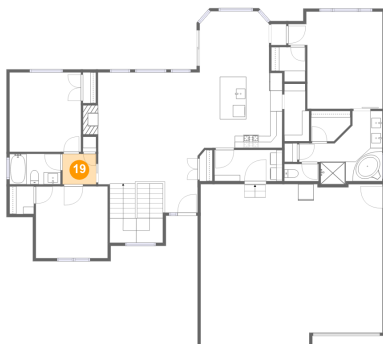
## 18 Floor 2 - Cl



Dimensions: 4'0" x 4'7"  
Area: 18 sq. ft  
Counted as living area: Yes

Heated: Yes  
Finished: Yes  
Enclosed: Yes  
Contiguous: Yes  
Permitted: Yes  
Wet space: No  
Addition: No  
Conversion: No

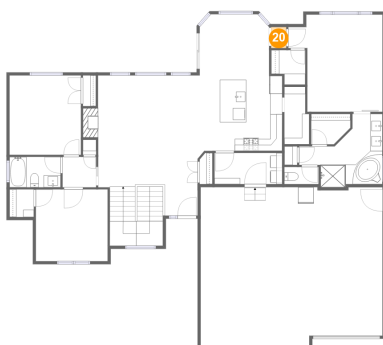
## 19 Floor 2 - Hall



Dimensions: 5'7" x 5'1"  
Area: 28 sq. ft  
Counted as living area: Yes

Heated: Yes  
Finished: Yes  
Enclosed: Yes  
Contiguous: Yes  
Permitted: Yes  
Wet space: No  
Addition: No  
Conversion: No

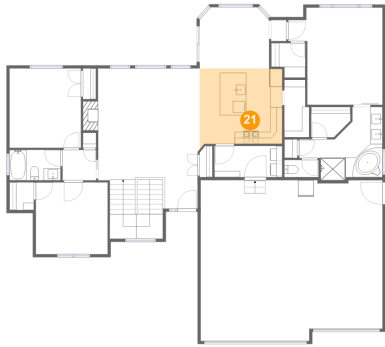
## 20 Floor 2 - Hall



Dimensions: 2'6" x 3'6"  
Area: 9 sq. ft  
Counted as living area: Yes

Heated: Yes  
Finished: Yes  
Enclosed: Yes  
Contiguous: Yes  
Permitted: Yes  
Wet space: No  
Addition: No  
Conversion: No

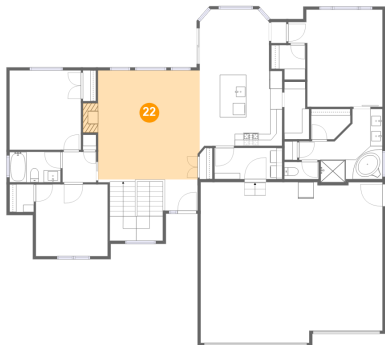
**21** Floor 2 - Kitchen



Dimensions: 13'8" x 13'3"  
Area: 172 sq. ft  
Counted as living area: Yes

Heated: Yes  
Finished: Yes  
Enclosed: Yes  
Contiguous: Yes  
Permitted: Yes  
Wet space: No  
Addition: No  
Conversion: No

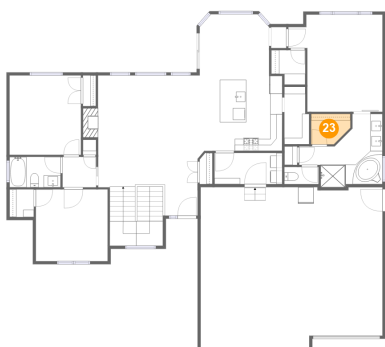
**22** Floor 2 - Living Room



Dimensions: 16'10" x 18'0"  
Area: 315 sq. ft  
Counted as living area: Yes

Heated: Yes  
Finished: Yes  
Enclosed: Yes  
Contiguous: Yes  
Permitted: Yes  
Wet space: No  
Addition: No  
Conversion: No

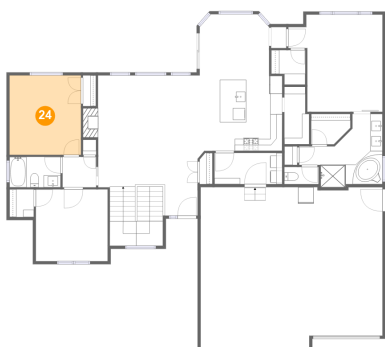
**23** Floor 2 - Cl



Dimensions: 6'6" x 5'1"  
Area: 29 sq. ft  
Counted as living area: Yes

Heated: Yes  
Finished: Yes  
Enclosed: Yes  
Contiguous: Yes  
Permitted: Yes  
Wet space: No  
Addition: No  
Conversion: No

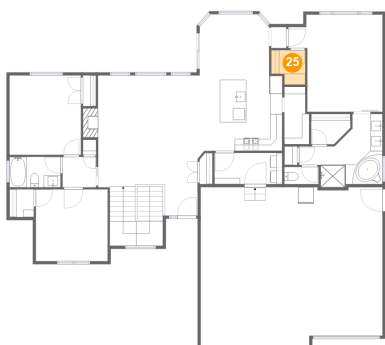
## 24 Floor 2 - Bedroom



Dimensions: 11'10" x 13'2"  
Area: 156 sq. ft  
Counted as living area: Yes

Heated: Yes  
Finished: Yes  
Enclosed: Yes  
Contiguous: Yes  
Permitted: Yes  
Wet space: No  
Addition: No  
Conversion: No

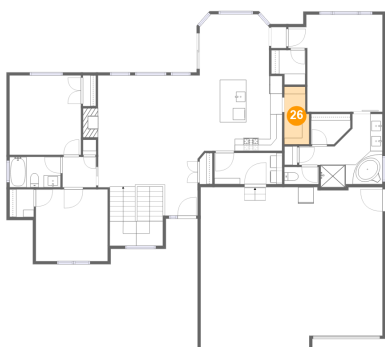
## 25 Floor 2 - Cl



Dimensions: 5'8" x 5'9"  
Area: 29 sq. ft  
Counted as living area: Yes

Heated: Yes  
Finished: Yes  
Enclosed: Yes  
Contiguous: Yes  
Permitted: Yes  
Wet space: No  
Addition: No  
Conversion: No

## 26 Floor 2 - Pantry

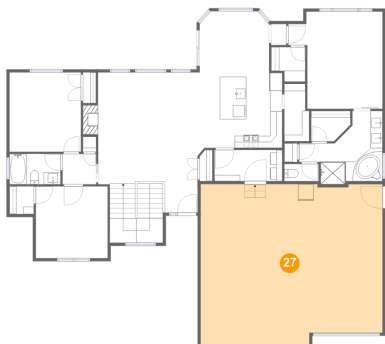


Dimensions: 4'1" x 9'7"  
Area: 36 sq. ft  
Counted as living area: Yes

Heated: Yes  
Finished: Yes  
Enclosed: Yes  
Contiguous: Yes  
Permitted: Yes  
Wet space: No  
Addition: No  
Conversion: No

# 2338 Torben Ct, Cheyenne, WY, US

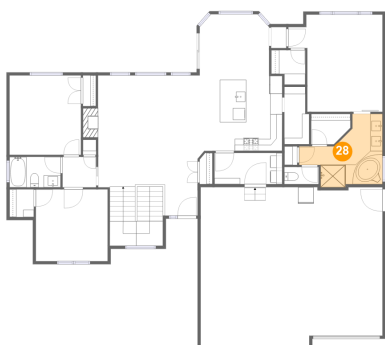
## 27 Floor 2 - Garage



**Dimensions:** 30'2" x 26'8"  
**Area:** 776 sq. ft  
**Counted as living area:** No

**Heated:** No  
**Finished:** No  
**Enclosed:** Yes  
**Contiguous:** Yes  
**Permitted:** Yes  
**Wet space:** No  
**Addition:** No  
**Conversion:** No

## 28 Floor 2 - Bath



**Dimensions:** 13'10" x 11'8"  
**Area:** 109 sq. ft  
**Counted as living area:** Yes

**Heated:** Yes  
**Finished:** Yes  
**Enclosed:** Yes  
**Contiguous:** Yes  
**Permitted:** Yes  
**Wet space:** Yes  
**Addition:** No  
**Conversion:** No