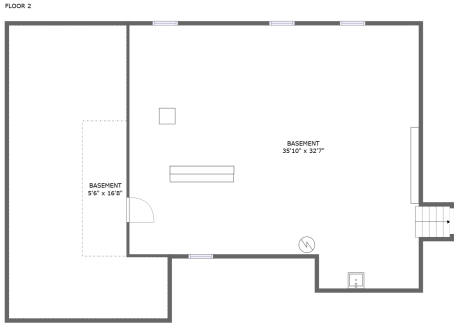
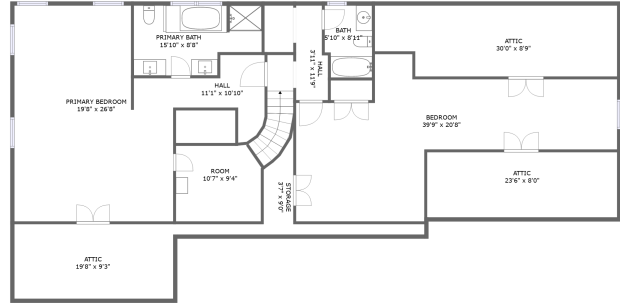
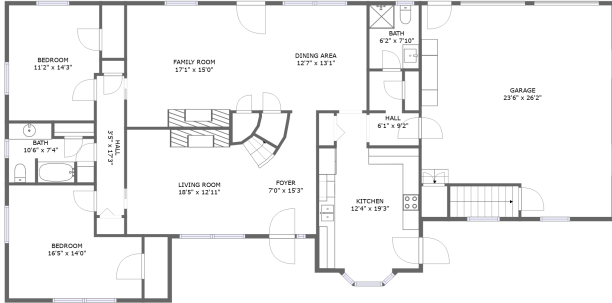



3205 Golf Colony Drive, Country Club Estates, Salem, Salem, Virginia, United States, 24153




Property Summary


 **1** garages

 **4** bedrooms

 **4** bathrooms

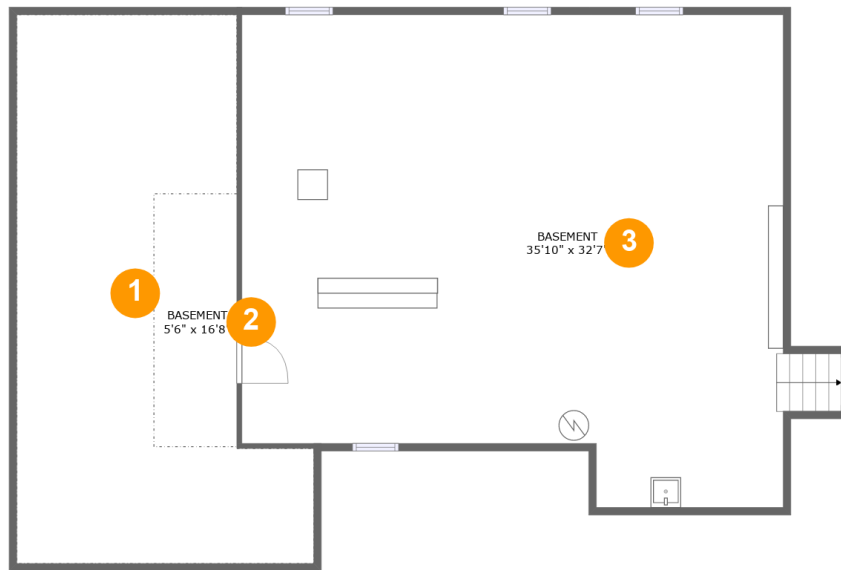
 **0** half baths

 **3** floors

 **2,995** Gross Living Area sqft

 **6,486** total sqft

**3205 Golf Colony Drive, Country Club Estates,
Salem, Salem, Virginia, United States, 24153**



Room Dimensions

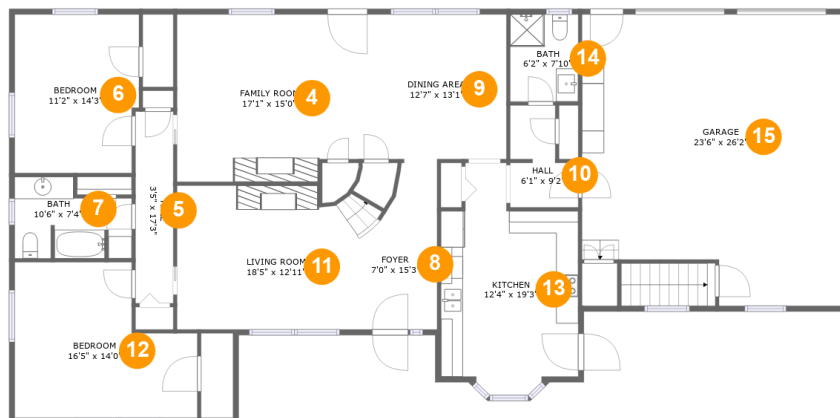
Floor 1

Total sqft: 1758

Living area: 0

#	Room name	Dimensions	Area (sqft)	Counted as Living Area
1	Crawl Space	19'8" x 36'3"	475 sq. ft	No
2	Basement	5'6" x 16'8"	92 sq. ft	No
3	Basement	35'10" x 32'7"	1082 sq. ft	No

3205 Golf Colony Drive, Country Club Estates, Salem, Salem, Virginia, United States, 24153



Room Dimensions

Floor 2

Total sqft: 2397

Living area: 1564

#	Room name	Dimensions	Area (sqft)	Counted as Living Area
4	Family Room	17'1" x 15'0"	248 sq. ft	Yes
5	Hall	3'5" x 17'3"	59 sq. ft	Yes
6	Bedroom	11'2" x 14'3"	156 sq. ft	Yes
7	Bath	10'6" x 7'4"	65 sq. ft	Yes
8	Foyer	7'0" x 15'3"	89 sq. ft	Yes
9	Dining Area	12'7" x 13'1"	164 sq. ft	No
10	Hall	6'1" x 9'2"	45 sq. ft	Yes
11	Living Room	18'5" x 12'11"	211 sq. ft	Yes
12	Bedroom	16'5" x 14'0"	192 sq. ft	Yes
13	Kitchen	12'4" x 19'3"	200 sq. ft	Yes
14	Bath	6'2" x 7'10"	48 sq. ft	Yes

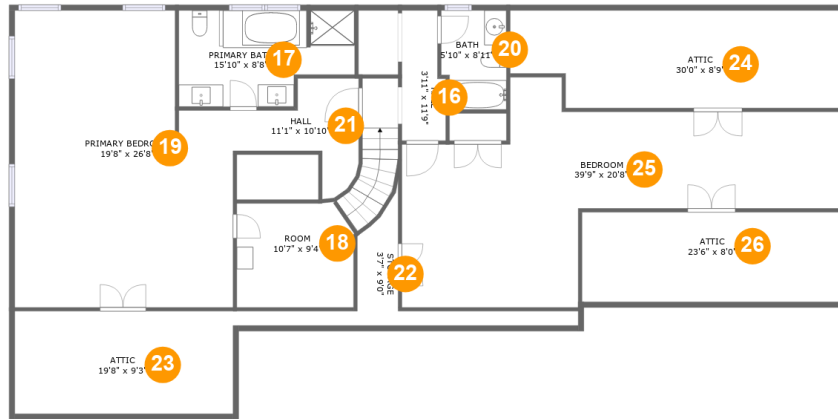
Scan captured on Wed, 26 Jun 2024 18:27:18 GMT

Information is calculated by CubiCasa technology; deemed highly reliable but not guaranteed.

**3205 Golf Colony Drive, Country Club Estates,
Salem, Salem, Virginia, United States, 24153**

#	Room name	Dimensions	Area (sqft)	Counted as Living Area
15	Garage	23'6" x 26'2"	565 sq. ft	No

3205 Golf Colony Drive, Country Club Estates, Salem, Salem, Virginia, United States, 24153



Room Dimensions

Floor 3

Total sqft: 2331

Living area: 1431

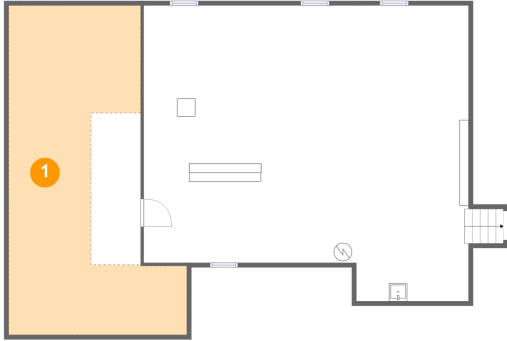
#	Room name	Dimensions	Area (sqft)	Counted as Living Area
16	Hall	3'11" x 11'9"	42 sq. ft	Yes
17	Primary Bath	15'10" x 8'8"	120 sq. ft	Yes
18	Room	10'7" x 9'4"	66 sq. ft	Yes
19	Primary Bedroom	19'8" x 26'8"	435 sq. ft	Yes
20	Bath	5'10" x 8'11"	50 sq. ft	Yes
21	Hall	11'1" x 10'10"	68 sq. ft	Yes
22	Storage	3'7" x 9'0"	19 sq. ft	No
23	Attic	19'8" x 9'3"	102 sq. ft	No
24	Attic	30'0" x 8'9"	168 sq. ft	No
25	Bedroom	39'9" x 20'8"	426 sq. ft	Yes
26	Attic	23'6" x 8'0"	133 sq. ft	No

Scan captured on Wed, 26 Jun 2024 18:27:18 GMT

Information is calculated by CubiCasa technology; deemed highly reliable but not guaranteed.

3205 Golf Colony Drive, Country Club Estates, Salem, Salem, Virginia, United States, 24153

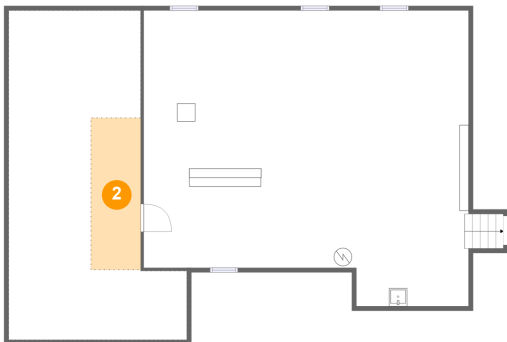
1 Floor 1 - Crawl Space



Dimensions: 19'8" x 36'3"
Area: 475 sq. ft
Counted as Living Area: No

Heated: No
Finished: No
Enclosed: No
Contiguous: Yes
Permitted: No
Wet Space: No
Addition: No
Conversion: No

2 Floor 1 - Basement

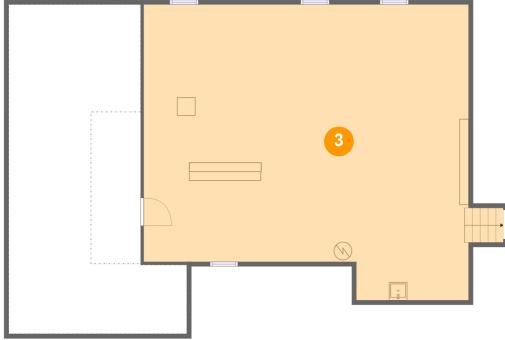


Dimensions: 5'6" x 16'8"
Area: 92 sq. ft
Counted as Living Area: No

Heated: No
Finished: No
Enclosed: Yes
Contiguous: Yes
Permitted: Yes
Wet Space: No
Addition: No
Conversion: No

3205 Golf Colony Drive, Country Club Estates, Salem, Salem, Virginia, United States, 24153

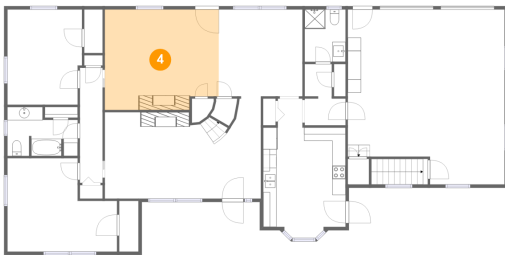
3 Floor 1 - Basement



Dimensions: 35'10" x 32'7"
Area: 1082 sq. ft
Counted as Living Area: No

Heated: No
Finished: No
Enclosed: Yes
Contiguous: Yes
Permitted: Yes
Wet Space: No
Addition: No
Conversion: No

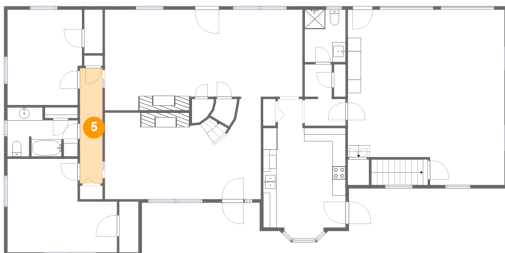
4 Floor 2 - Family Room



Dimensions: 17'1" x 15'0"
Area: 248 sq. ft
Counted as Living Area:
Yes

Heated: Yes
Finished: Yes
Enclosed: Yes
Contiguous:
Yes
Permitted: Yes
Wet Space: No
Addition: No
Conversion: No

5 Floor 2 - Hall

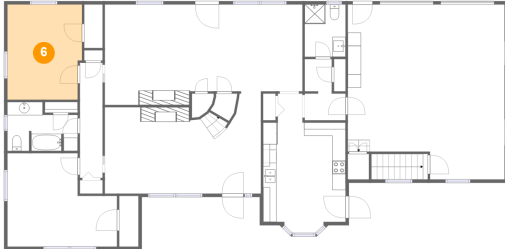


Dimensions: 3'5" x 17'3"
Area: 59 sq. ft
Counted as Living Area:
Yes

Heated: Yes
Finished: Yes
Enclosed: Yes
Contiguous:
Yes
Permitted: Yes
Wet Space: No
Addition: No
Conversion: No

3205 Golf Colony Drive, Country Club Estates, Salem, Salem, Virginia, United States, 24153

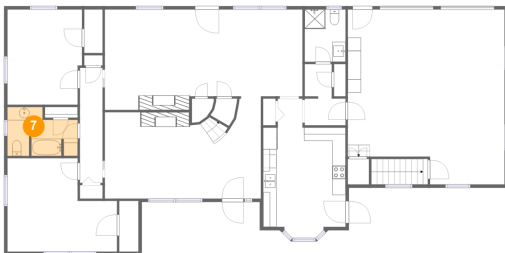
6 Floor 2 - Bedroom



Dimensions: 11'2" x 14'3"
Area: 156 sq. ft
Counted as Living Area:
Yes

Heated: Yes
Finished: Yes
Enclosed: Yes
Contiguous:
Yes
Permitted: Yes
Wet Space: No
Addition: No
Conversion: No

7 Floor 2 - Bath



Dimensions: 10'6" x 7'4"
Area: 65 sq. ft
Counted as Living Area:
Yes

Heated: Yes
Finished: Yes
Enclosed: Yes
Contiguous:
Yes
Permitted: Yes
Wet Space: Yes
Addition: No
Conversion: No

8 Floor 2 - Foyer

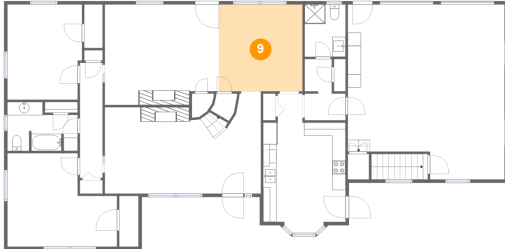


Dimensions: 7'0" x 15'3"
Area: 89 sq. ft
Counted as Living Area:
Yes

Heated: Yes
Finished: Yes
Enclosed: Yes
Contiguous:
Yes
Permitted: Yes
Wet Space: No
Addition: No
Conversion: No

3205 Golf Colony Drive, Country Club Estates, Salem, Salem, Virginia, United States, 24153

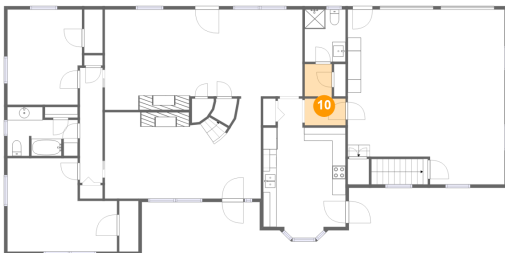
9 Floor 2 - Dining Area



Dimensions: 12'7" x 13'1"
Area: 164 sq. ft
Counted as Living Area: No

Heated: Yes
Finished: Yes
Enclosed: Yes
Contiguous: Yes
Permitted: Yes
Wet Space: No
Addition: No
Conversion: No

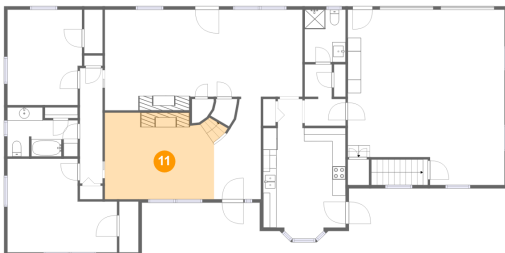
10 Floor 2 - Hall



Dimensions: 6'1" x 9'2"
Area: 45 sq. ft
Counted as Living Area: Yes

Heated: Yes
Finished: Yes
Enclosed: Yes
Contiguous: Yes
Permitted: Yes
Wet Space: No
Addition: No
Conversion: No

11 Floor 2 - Living Room



Dimensions: 18'5" x 12'11"
Area: 211 sq. ft
Counted as Living Area: Yes

Heated: Yes
Finished: Yes
Enclosed: Yes
Contiguous: Yes
Permitted: Yes
Wet Space: No
Addition: No
Conversion: No

3205 Golf Colony Drive, Country Club Estates, Salem, Salem, Virginia, United States, 24153

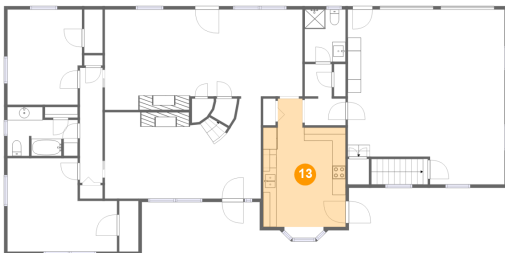
12 Floor 2 - Bedroom



Dimensions: 16'5" x 14'0"
Area: 192 sq. ft
Counted as Living Area:
Yes

Heated: Yes
Finished: Yes
Enclosed: Yes
Contiguous:
Yes
Permitted: Yes
Wet Space: No
Addition: No
Conversion: No

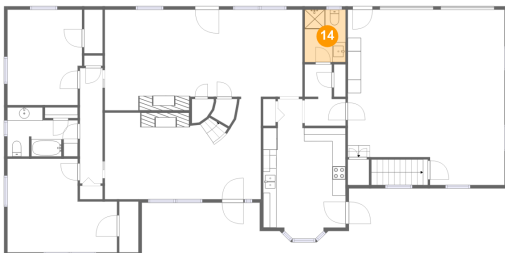
13 Floor 2 - Kitchen



Dimensions: 12'4" x 19'3"
Area: 200 sq. ft
Counted as Living Area:
Yes

Heated: Yes
Finished: Yes
Enclosed: Yes
Contiguous:
Yes
Permitted: Yes
Wet Space: No
Addition: No
Conversion: No

14 Floor 2 - Bath



Dimensions: 6'2" x 7'10"
Area: 48 sq. ft
Counted as Living Area:
Yes

Heated: Yes
Finished: Yes
Enclosed: Yes
Contiguous:
Yes
Permitted: Yes
Wet Space: Yes
Addition: No
Conversion: No

3205 Golf Colony Drive, Country Club Estates, Salem, Salem, Virginia, United States, 24153

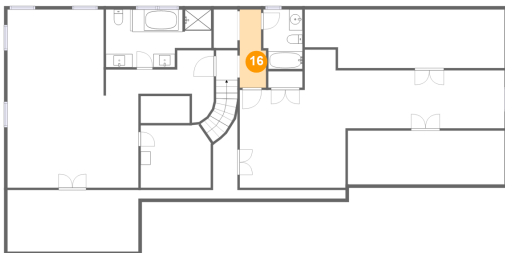
15 Floor 2 - Garage



Dimensions: 23'6" x 26'2"
Area: 565 sq. ft
Counted as Living Area: No

Heated: No
Finished: No
Enclosed: Yes
Contiguous: Yes
Permitted: Yes
Wet Space: No
Addition: No
Conversion: No

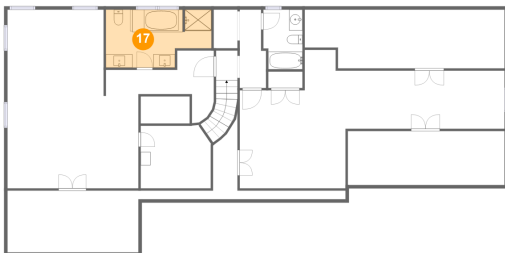
16 Floor 3 - Hall



Dimensions: 3'11" x 11'9"
Area: 42 sq. ft
Counted as Living Area:
Yes

Heated: Yes
Finished: Yes
Enclosed: Yes
Contiguous:
Yes
Permitted: Yes
Wet Space: No
Addition: No
Conversion: No

17 Floor 3 - Primary Bath

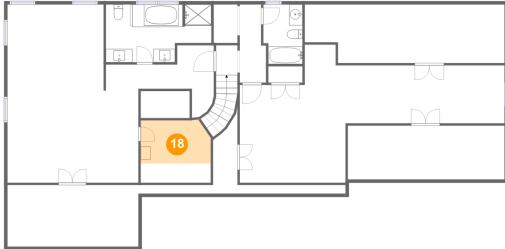


Dimensions: 15'10" x 8'8"
Area: 120 sq. ft
Counted as Living Area:
Yes

Heated: Yes
Finished: Yes
Enclosed: Yes
Contiguous:
Yes
Permitted: Yes
Wet Space: Yes
Addition: No
Conversion: No

3205 Golf Colony Drive, Country Club Estates, Salem, Salem, Virginia, United States, 24153

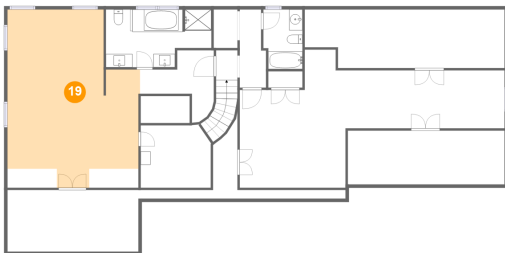
18 Floor 3 - Room



Dimensions: 10'7" x 9'4"
Area: 66 sq. ft
Counted as Living Area:
Yes

Heated: Yes
Finished: Yes
Enclosed: Yes
Contiguous:
Yes
Permitted: Yes
Wet Space: No
Addition: No
Conversion: No

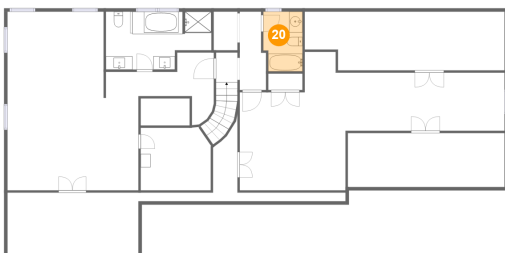
19 Floor 3 - Primary Bedroom



Dimensions: 19'8" x 26'8"
Area: 435 sq. ft
Counted as Living Area:
Yes

Heated: Yes
Finished: Yes
Enclosed: Yes
Contiguous:
Yes
Permitted: Yes
Wet Space: No
Addition: No
Conversion: No

20 Floor 3 - Bath

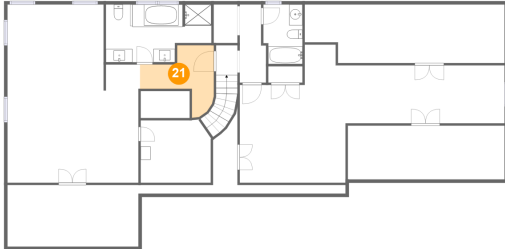


Dimensions: 5'10" x 8'11"
Area: 50 sq. ft
Counted as Living Area:
Yes

Heated: Yes
Finished: Yes
Enclosed: Yes
Contiguous:
Yes
Permitted: Yes
Wet Space: Yes
Addition: No
Conversion: No

3205 Golf Colony Drive, Country Club Estates, Salem, Salem, Virginia, United States, 24153

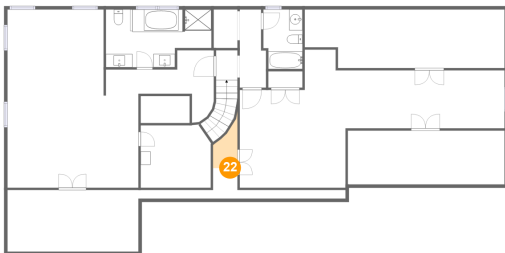
21 Floor 3 - Hall



Dimensions: 11'1" x 10'10"
Area: 68 sq. ft
Counted as Living Area:
Yes

Heated: Yes
Finished: Yes
Enclosed: Yes
Contiguous:
Yes
Permitted: Yes
Wet Space: No
Addition: No
Conversion: No

22 Floor 3 - Storage



Dimensions: 3'7" x 9'0"
Area: 19 sq. ft
Counted as Living Area: No

Heated: No
Finished: No
Enclosed: No
Contiguous: Yes
Permitted: Yes
Wet Space: No
Addition: No
Conversion: No

23 Floor 3 - Attic

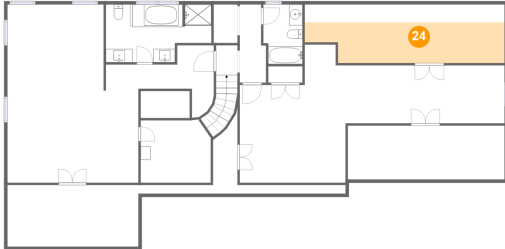


Dimensions: 19'8" x 9'3"
Area: 102 sq. ft
Counted as Living Area: No

Heated: No
Finished: No
Enclosed: Yes
Contiguous: Yes
Permitted: Yes
Wet Space: No
Addition: No
Conversion: No

3205 Golf Colony Drive, Country Club Estates, Salem, Salem, Virginia, United States, 24153

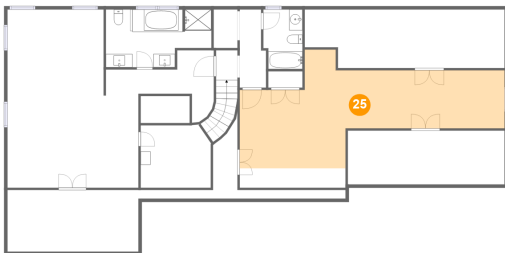
24 Floor 3 - Attic



Dimensions: 30'0" x 8'9"
Area: 168 sq. ft
Counted as Living Area: No

Heated: No
Finished: No
Enclosed: Yes
Contiguous: Yes
Permitted: Yes
Wet Space: No
Addition: No
Conversion: No

25 Floor 3 - Bedroom



Dimensions: 39'9" x 20'8"
Area: 426 sq. ft
Counted as Living Area: Yes

Heated: Yes
Finished: Yes
Enclosed: Yes
Contiguous: Yes
Permitted: Yes
Wet Space: No
Addition: No
Conversion: No

26 Floor 3 - Attic



Dimensions: 23'6" x 8'0"
Area: 133 sq. ft
Counted as Living Area: No

Heated: No
Finished: No
Enclosed: Yes
Contiguous: Yes
Permitted: Yes
Wet Space: No
Addition: No
Conversion: No