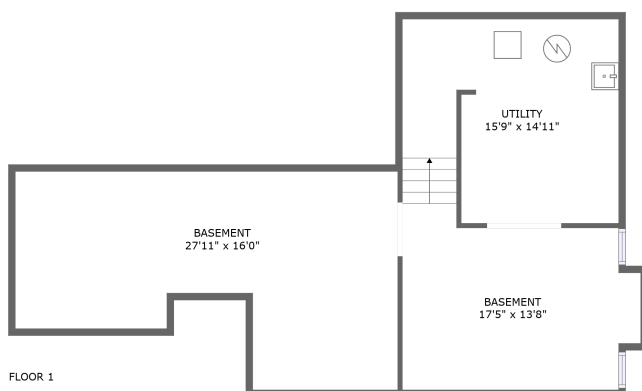
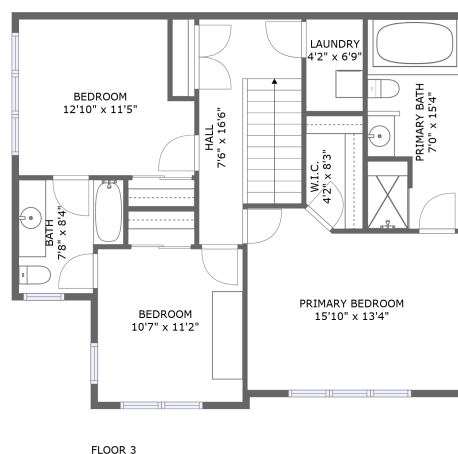
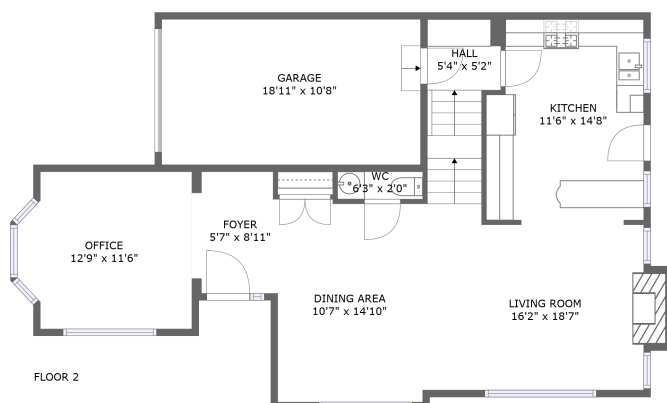


Home report

2956 Westoak Trails Boulevard, Westmount, Oakville, Halton County, Ontario, Canada, L6M 4S6



Total Area: 1660 sq. ft

Below Ground: 0 sq. ft, Floor 2: 809 sq. ft, Floor 3: 851 sq. ft

Excluded: Basement 580 sq. ft, Utility 216 sq. ft, Garage 201 sq. ft, Fireplace 10 sq. ft, Walls: 225 sq. ft

Property summary



Home report

**2956 Westoak Trails Boulevard, Westmount, Oakville, Halton
County, Ontario, Canada, L6M 4S6**



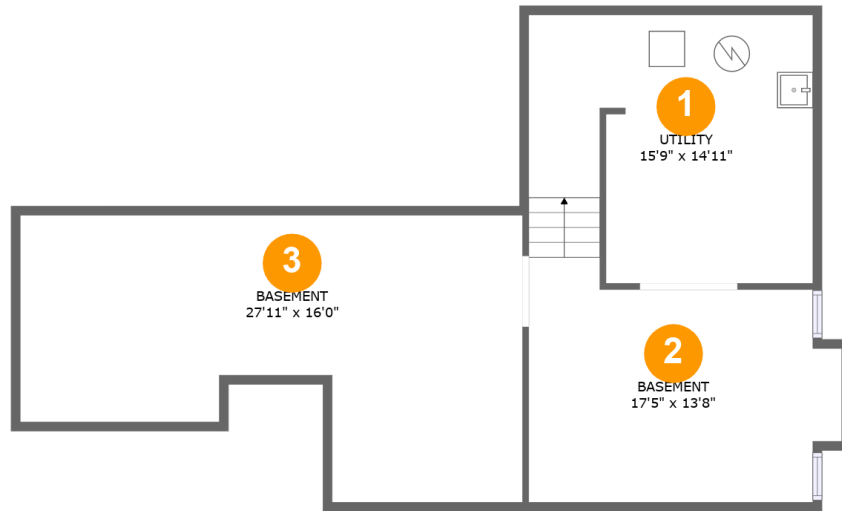
1
Half baths



1
Garages

Home report

2956 Westoak Trails Boulevard, Westmount, Oakville, Halton County, Ontario, Canada, L6M 4S6



Room dimensions

Floor 1 Below ground

Total:0sqft

Excluded: 796sqft

#		Max Dimensions	sqft	Included
1	Utility	15'9" x 14'11"	214 sq. ft	No
2	Basement	17'5" x 13'8"	216 sq. ft	No
3	Basement	27'11" x 16'0"	353 sq. ft	No

Home report

2956 Westoak Trails Boulevard, Westmount, Oakville, Halton County, Ontario, Canada, L6M 4S6



Room dimensions

Floor 2

Total:809sqft

Excluded: 211sqft

#		Max Dimensions	sqft	Included
4	Garage	18'11" x 10'8"	201 sq. ft	No
5	Kitchen	11'6" x 14'8"	161 sq. ft	Yes
6	Hall	5'4" x 5'2"	28 sq. ft	Yes
7	Living Room	16'2" x 18'7"	243 sq. ft	Yes
8	Office	12'9" x 11'6"	137 sq. ft	Yes
9	Dining Area	10'7" x 14'10"	155 sq. ft	Yes
10	Foyer	5'7" x 8'11"	49 sq. ft	Yes
11	WC	6'3" x 2'0"	13 sq. ft	Yes

Home report

2956 Westoak Trails Boulevard, Westmount, Oakville, Halton County, Ontario, Canada, L6M 4S6



Room dimensions

Floor 3

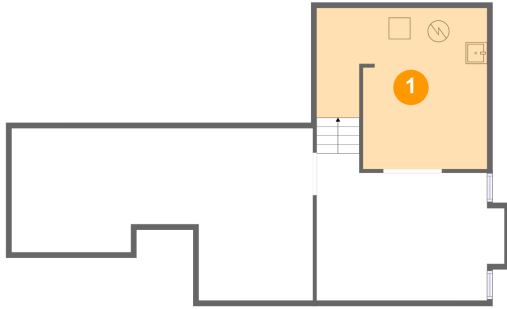
Total:851sqft

Excluded: 0sqft

#		Max Dimensions	sqft	Included
12	Primary Bath	7'0" x 15'4"	106 sq. ft	Yes
13	Primary Bedroom	15'10" x 13'4"	191 sq. ft	Yes
14	Bedroom	10'7" x 11'2"	119 sq. ft	Yes
15	Hall	7'6" x 16'6"	111 sq. ft	Yes
16	Bath	7'8" x 8'4"	56 sq. ft	Yes
17	Bedroom	12'10" x 11'5"	135 sq. ft	Yes
18	Laundry	4'2" x 6'9"	28 sq. ft	Yes
19	W.I.C.	4'2" x 8'3"	32 sq. ft	Yes

2956 Westoak Trails Boulevard, Westmount, Oakville, Halton County, Ontario, Canada, L6M 4S6

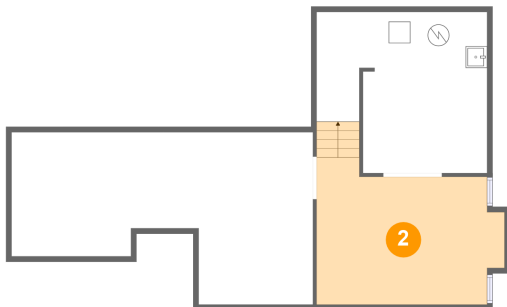
1 Floor 1 - Utility



Max Dimensions: 15'9" x 14'11"
Calculated Area: 214 sq. ft
Included: No

Heated: Yes
Finished: No
Enclosed: Yes
Contiguous: Yes
Permitted: Yes
Wet space: No
Addition: No
Conversion: No

2 Floor 1 - Basement

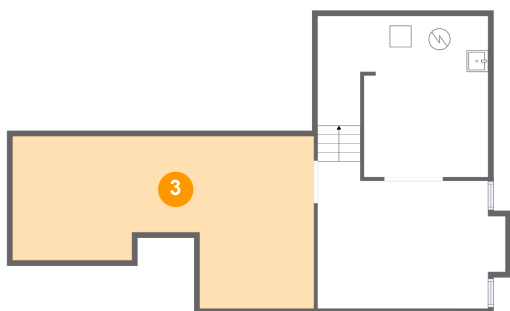


Max Dimensions: 17'5" x 13'8"
Calculated Area: 216 sq. ft
Included: No

Heated: Yes
Finished: No
Enclosed: Yes
Contiguous: Yes
Permitted: Yes
Wet space: No
Addition: No
Conversion: No

2956 Westoak Trails Boulevard, Westmount, Oakville, Halton County, Ontario, Canada, L6M 4S6

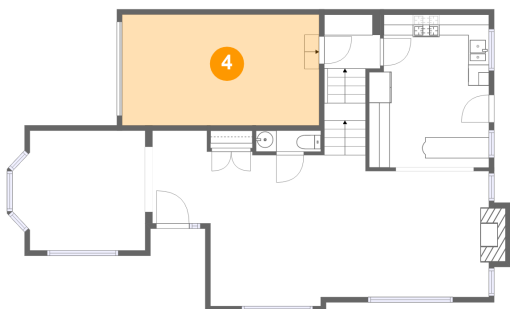
3 Floor 1 - Basement



Max Dimensions: 27'11" x 16'0"
Calculated Area: 353 sq. ft
Included: No

Heated: Yes
Finished: No
Enclosed: Yes
Contiguous: Yes
Permitted: Yes
Wet space: No
Addition: No
Conversion: No

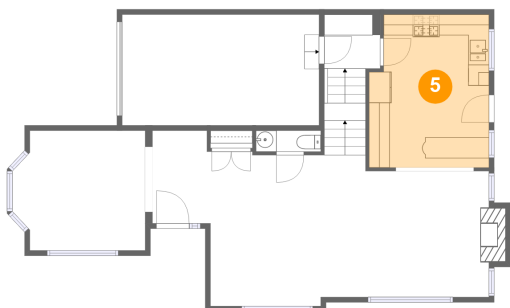
4 Floor 2 - Garage



Max Dimensions: 18'11" x 10'8"
Calculated Area: 201 sq. ft
Included: No

Heated: No
Finished: No
Enclosed: Yes
Contiguous: Yes
Permitted: Yes
Wet space: No
Addition: No
Conversion: No

5 Floor 2 - Kitchen

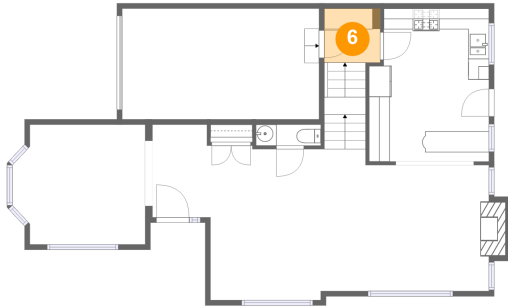


Max Dimensions: 11'6" x 14'8"
Calculated Area: 161 sq. ft
Included: Yes

Heated: Yes
Finished: Yes
Enclosed: Yes
Contiguous: Yes
Permitted: Yes
Wet space: No
Addition: No
Conversion: No

2956 Westoak Trails Boulevard, Westmount, Oakville, Halton County, Ontario, Canada, L6M 4S6

6 Floor 2 - Hall



Max Dimensions: 5'4" x 5'2"
Calculated Area: 28 sq. ft
Included: Yes

Heated: Yes
Finished: Yes
Enclosed: Yes
Contiguous: Yes
Permitted: Yes
Wet space: No
Addition: No
Conversion: No

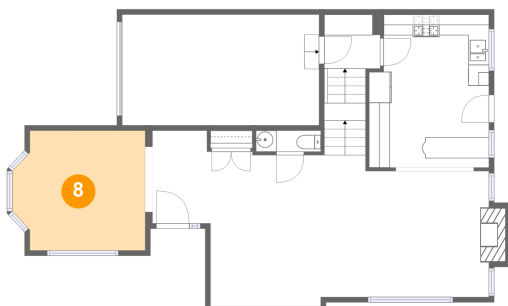
7 Floor 2 - Living Room



Max Dimensions: 16'2" x 18'7"
Calculated Area: 243 sq. ft
Included: Yes

Heated: Yes
Finished: Yes
Enclosed: Yes
Contiguous: Yes
Permitted: Yes
Wet space: No
Addition: No
Conversion: No

8 Floor 2 - Office

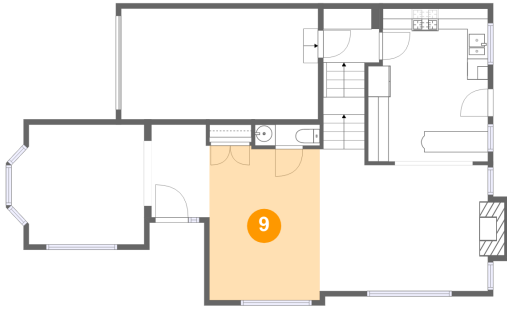


Max Dimensions: 12'9" x 11'6"
Calculated Area: 137 sq. ft
Included: Yes

Heated: Yes
Finished: Yes
Enclosed: Yes
Contiguous: Yes
Permitted: Yes
Wet space: No
Addition: No
Conversion: No

2956 Westoak Trails Boulevard, Westmount, Oakville, Halton County, Ontario, Canada, L6M 4S6

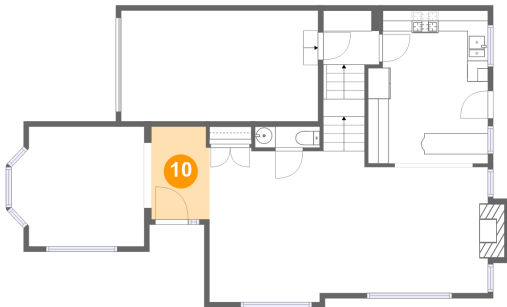
9 Floor 2 - Dining Area



Max Dimensions: 10'7" x 14'10"
Calculated Area: 155 sq. ft
Included: Yes

Heated: Yes
Finished: Yes
Enclosed: Yes
Contiguous: Yes
Permitted: Yes
Wet space: No
Addition: No
Conversion: No

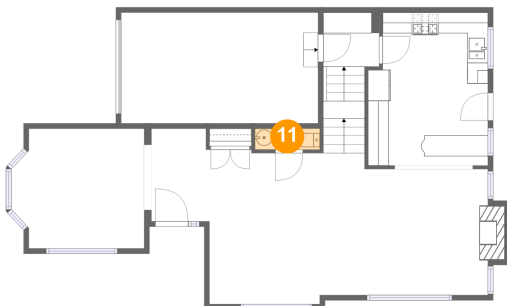
10 Floor 2 - Foyer



Max Dimensions: 5'7" x 8'11"
Calculated Area: 49 sq. ft
Included: Yes

Heated: Yes
Finished: Yes
Enclosed: Yes
Contiguous: Yes
Permitted: Yes
Wet space: No
Addition: No
Conversion: No

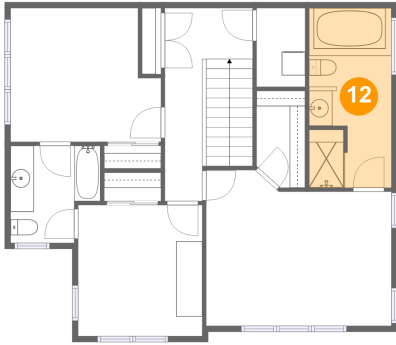
11 Floor 2 - WC



Max Dimensions: 6'3" x 2'0"
Calculated Area: 13 sq. ft
Included: Yes

Heated: Yes
Finished: Yes
Enclosed: Yes
Contiguous: Yes
Permitted: Yes
Wet space: Yes
Addition: No
Conversion: No

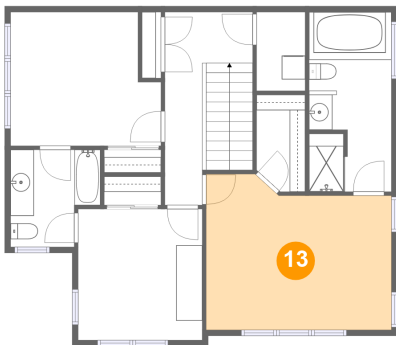
12 Floor 3 - Primary Bath



Max Dimensions: 7'0" x 15'4"
Calculated Area: 106 sq. ft
Included: Yes

Heated: Yes
Finished: Yes
Enclosed: Yes
Contiguous: Yes
Permitted: Yes
Wet space: Yes
Addition: No
Conversion: No

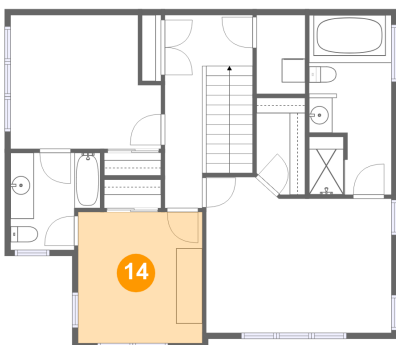
13 Floor 3 - Primary Bedroom



Max Dimensions: 15'10" x 13'4"
Calculated Area: 191 sq. ft
Included: Yes

Heated: Yes
Finished: Yes
Enclosed: Yes
Contiguous: Yes
Permitted: Yes
Wet space: No
Addition: No
Conversion: No

14 Floor 3 - Bedroom

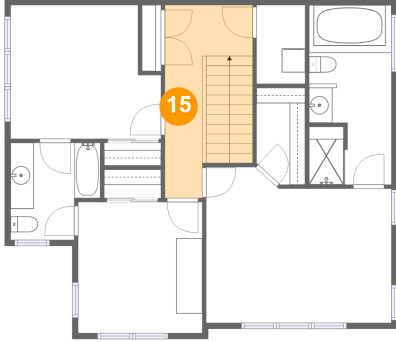


Max Dimensions: 10'7" x 11'2"
Calculated Area: 119 sq. ft
Included: Yes

Heated: Yes
Finished: Yes
Enclosed: Yes
Contiguous: Yes
Permitted: Yes
Wet space: No
Addition: No
Conversion: No

2956 Westoak Trails Boulevard, Westmount, Oakville, Halton County, Ontario, Canada, L6M 4S6

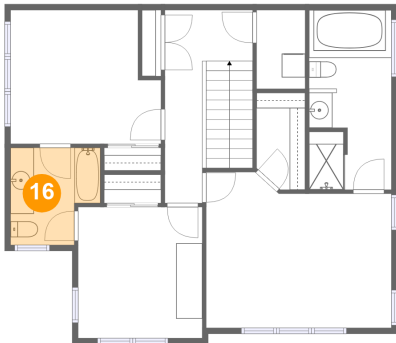
15 Floor 3 - Hall



Max Dimensions: 7'6" x 16'6"
Calculated Area: 111 sq. ft
Included: Yes

Heated: Yes
Finished: Yes
Enclosed: Yes
Contiguous: Yes
Permitted: Yes
Wet space: No
Addition: No
Conversion: No

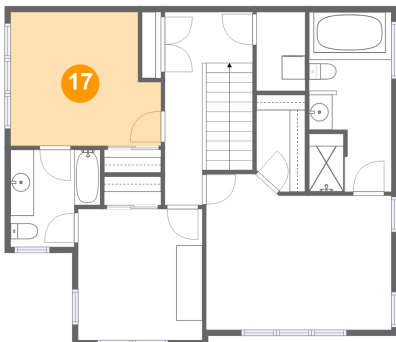
16 Floor 3 - Bath



Max Dimensions: 7'8" x 8'4"
Calculated Area: 56 sq. ft
Included: Yes

Heated: Yes
Finished: Yes
Enclosed: Yes
Contiguous: Yes
Permitted: Yes
Wet space: Yes
Addition: No
Conversion: No

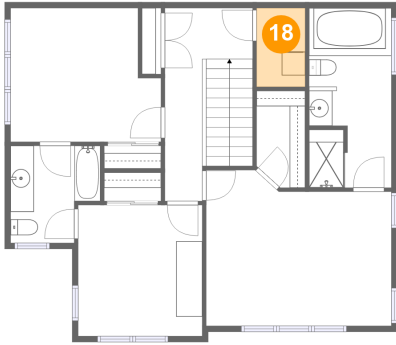
17 Floor 3 - Bedroom



Max Dimensions: 12'10" x 11'5"
Calculated Area: 135 sq. ft
Included: Yes

Heated: Yes
Finished: Yes
Enclosed: Yes
Contiguous: Yes
Permitted: Yes
Wet space: No
Addition: No
Conversion: No

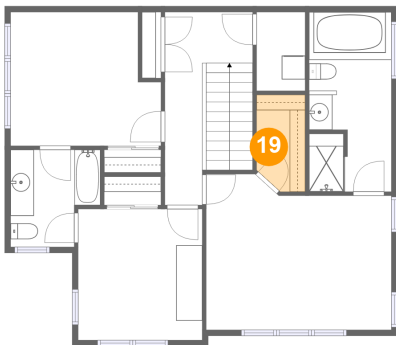
18 Floor 3 - Laundry



Max Dimensions: 4'2" x 6'9"
Calculated Area: 28 sq. ft
Included: Yes

Heated: Yes
Finished: Yes
Enclosed: Yes
Contiguous: Yes
Permitted: Yes
Wet space: No
Addition: No
Conversion: No

19 Floor 3 - W.I.C.



Max Dimensions: 4'2" x 8'3"
Calculated Area: 32 sq. ft
Included: Yes

Heated: Yes
Finished: Yes
Enclosed: Yes
Contiguous: Yes
Permitted: Yes
Wet space: No
Addition: No
Conversion: No