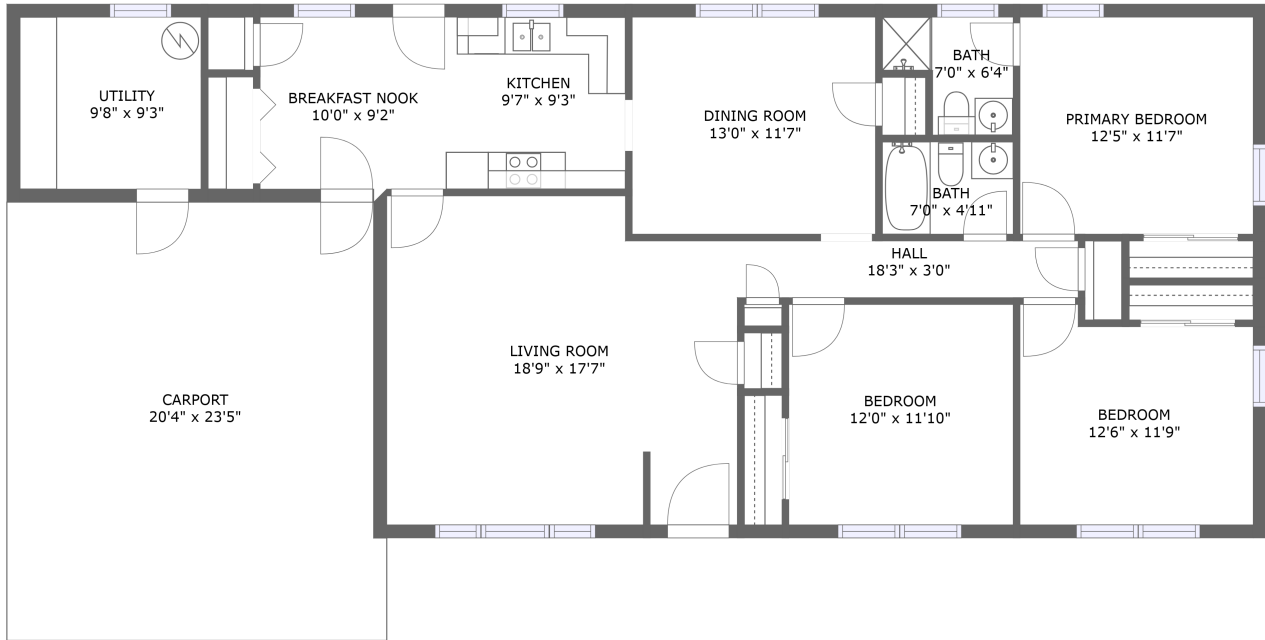



376 College Park Court Northwest, Huntsville, Madison County, Alabama, United States, 35805



FLOOR 1

Property summary


 **0** Garages

 **3** Bedrooms

 **2** Bathrooms

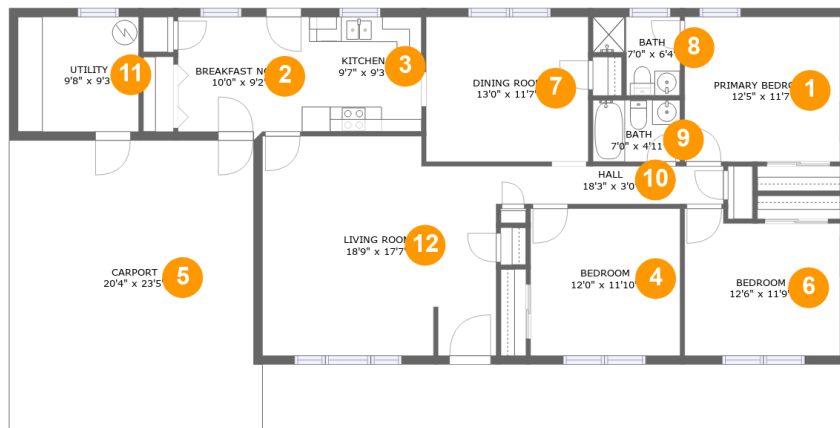
 **0** Half baths

 **1** Floors

 **1,465** Gross living area sqft

 **2,040** Total sqft

376 College Park Court Northwest, Huntsville, Madison County, Alabama, United States, 35805



Room dimensions

Floor 1

Total sqft: 2040 Living area: 1465

#		Dimensions	sqft	Counted as living area
1	Primary Bedroom	12'5" x 11'7"	145 sq. ft	Yes
2	Breakfast Nook	10'0" x 9'2"	92 sq. ft	Yes
3	Kitchen	9'7" x 9'3"	88 sq. ft	Yes
4	Bedroom	12'0" x 11'10"	142 sq. ft	Yes
5	Carport	20'4" x 23'5"	465 sq. ft	No
6	Bedroom	12'6" x 11'9"	136 sq. ft	Yes
7	Dining Room	13'0" x 11'7"	151 sq. ft	Yes
8	Bath	7'0" x 6'4"	35 sq. ft	Yes
9	Bath	7'0" x 4'11"	35 sq. ft	Yes
10	Hall	18'3" x 3'0"	55 sq. ft	Yes
11	Utility	9'8" x 9'3"	89 sq. ft	No

Scan captured on Sat, 01 Mar 2025 15:21:28 GMT

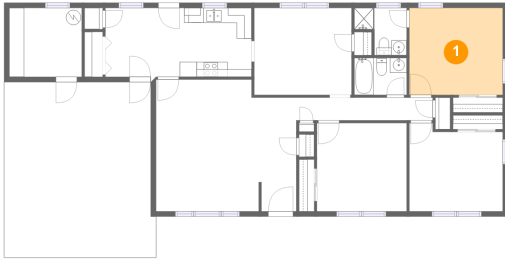
Information is calculated by Cubicasa technology deemed highly reliable but not guaranteed.

376 College Park Court Northwest, Huntsville, Madison County, Alabama, United States, 35805

#		Dimensions	sqft	Counted as living area
12	Living Room	18'9" x 17'7"	315 sq. ft	Yes

376 College Park Court Northwest, Huntsville, Madison County, Alabama, United States, 35805

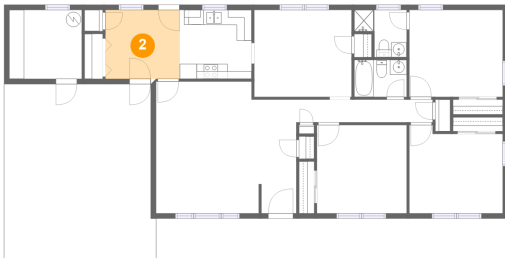
1 Floor 1 - Primary Bedroom



Dimensions: 12'5" x 11'7"
Area: 145 sq. ft
Counted as living area: Yes

Heated: Yes
Finished: Yes
Enclosed: Yes
Contiguous: Yes
Permitted: Yes
Wet space: No
Addition: No
Conversion: No

2 Floor 1 - Breakfast Nook

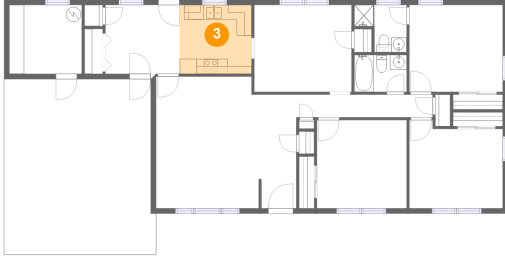


Dimensions: 10'0" x 9'2"
Area: 92 sq. ft
Counted as living area: Yes

Heated: Yes
Finished: Yes
Enclosed: Yes
Contiguous: Yes
Permitted: Yes
Wet space: No
Addition: No
Conversion: No

376 College Park Court Northwest, Huntsville, Madison County, Alabama, United States, 35805

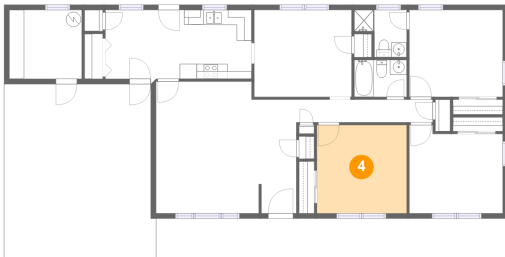
3 Floor 1 - Kitchen



Dimensions: 9'7" x 9'3"
Area: 88 sq. ft
Counted as living area: Yes

Heated: Yes
Finished: Yes
Enclosed: Yes
Contiguous: Yes
Permitted: Yes
Wet space: No
Addition: No
Conversion: No

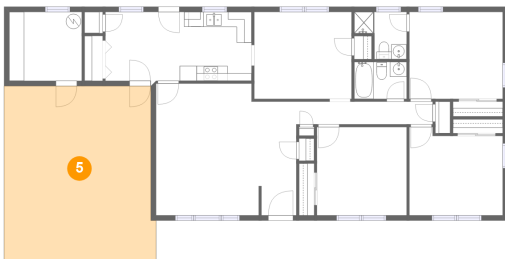
4 Floor 1 - Bedroom



Dimensions: 12'0" x 11'10"
Area: 142 sq. ft
Counted as living area: Yes

Heated: Yes
Finished: Yes
Enclosed: Yes
Contiguous: Yes
Permitted: Yes
Wet space: No
Addition: No
Conversion: No

5 Floor 1 - Carport

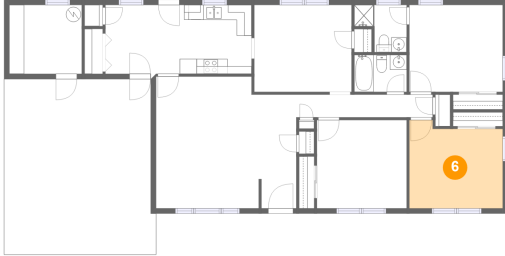


Dimensions: 20'4" x 23'5"
Area: 465 sq. ft
Counted as living area: No

Heated: No
Finished: Yes
Enclosed: No
Contiguous: Yes
Permitted: Yes
Wet space: No
Addition: No
Conversion: No

376 College Park Court Northwest, Huntsville, Madison County, Alabama, United States, 35805

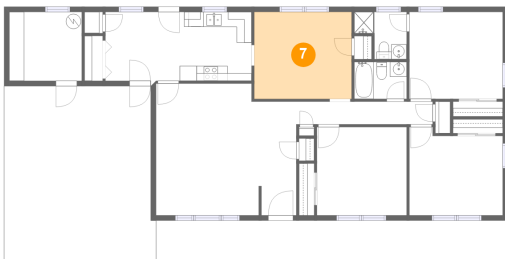
6 Floor 1 - Bedroom



Dimensions: 12'6" x 11'9"
Area: 136 sq. ft
Counted as living area: Yes

Heated: Yes
Finished: Yes
Enclosed: Yes
Contiguous: Yes
Permitted: Yes
Wet space: No
Addition: No
Conversion: No

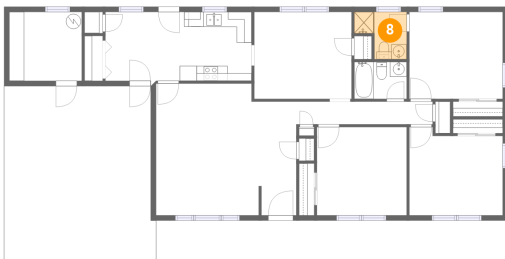
7 Floor 1 - Dining Room



Dimensions: 13'0" x 11'7"
Area: 151 sq. ft
Counted as living area: Yes

Heated: Yes
Finished: Yes
Enclosed: Yes
Contiguous: Yes
Permitted: Yes
Wet space: No
Addition: No
Conversion: No

8 Floor 1 - Bath

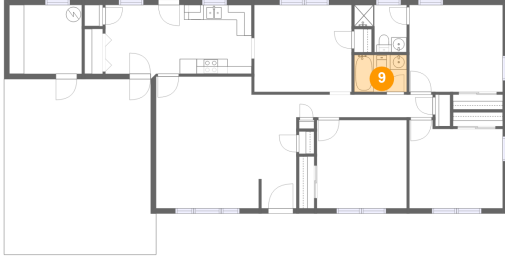


Dimensions: 7'0" x 6'4"
Area: 35 sq. ft
Counted as living area: Yes

Heated: Yes
Finished: Yes
Enclosed: Yes
Contiguous: Yes
Permitted: Yes
Wet space: Yes
Addition: No
Conversion: No

376 College Park Court Northwest, Huntsville, Madison County, Alabama, United States, 35805

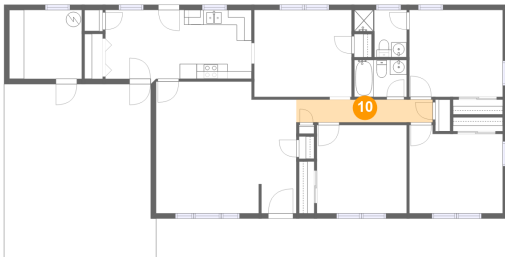
9 Floor 1 - Bath



Dimensions: 7'0" x 4'11"
Area: 35 sq. ft
Counted as living area: Yes

Heated: Yes
Finished: Yes
Enclosed: Yes
Contiguous: Yes
Permitted: Yes
Wet space: Yes
Addition: No
Conversion: No

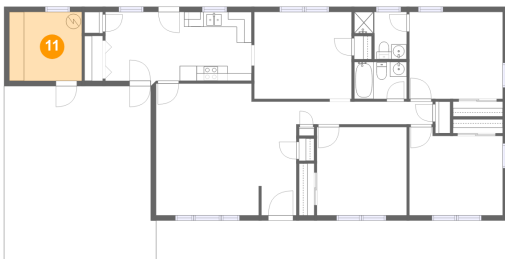
10 Floor 1 - Hall



Dimensions: 18'3" x 3'0"
Area: 55 sq. ft
Counted as living area: Yes

Heated: Yes
Finished: Yes
Enclosed: Yes
Contiguous: Yes
Permitted: Yes
Wet space: No
Addition: No
Conversion: No

11 Floor 1 - Utility

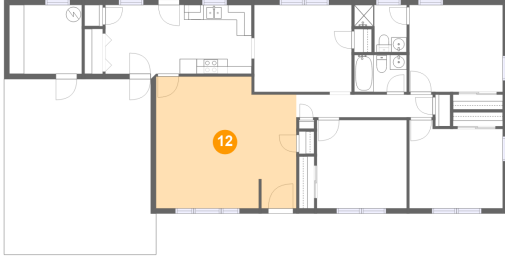


Dimensions: 9'8" x 9'3"
Area: 89 sq. ft
Counted as living area: No

Heated: Yes
Finished: Yes
Enclosed: Yes
Contiguous: No
Permitted: Yes
Wet space: No
Addition: No
Conversion: No

**376 College Park Court Northwest, Huntsville,
Madison County, Alabama, United States, 35805**

12 Floor 1 - Living Room



Dimensions: 18'9" x 17'7"
Area: 315 sq. ft
Counted as living area: Yes

Heated: Yes
Finished: Yes
Enclosed: Yes
Contiguous: Yes
Permitted: Yes
Wet space: No
Addition: No
Conversion: No