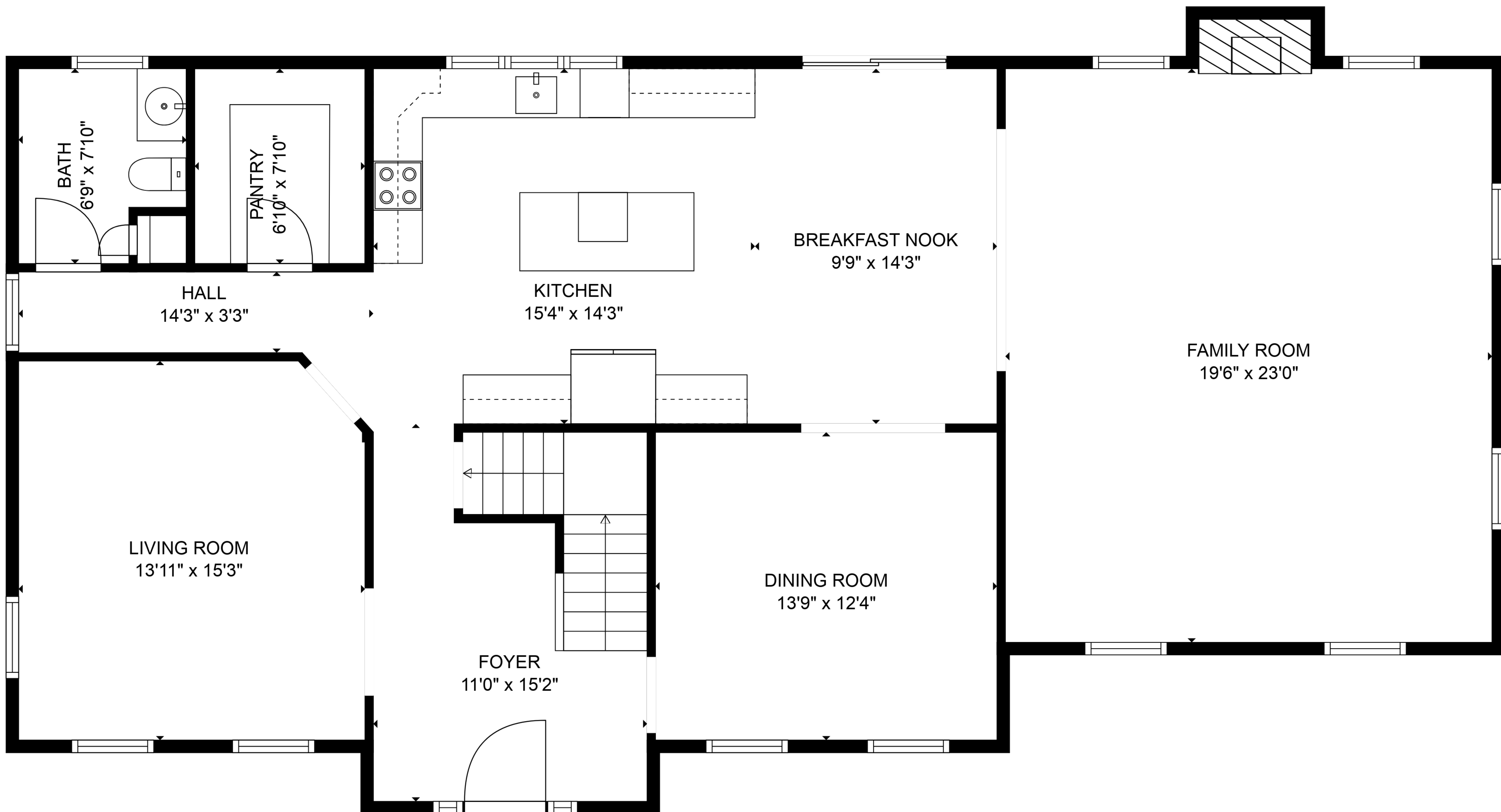


TOTAL: 3714 sq. ft

BELOW GROUND: 783 sq. ft, FLOOR 2: 1547 sq. ft, FLOOR 3: 1384 sq. ft, FLOOR 4: 0 sq. ft
EXCLUDED AREAS: GARAGE: 610 sq. ft, ELECTRICAL ROOM: 105 sq. ft, FIREPLACE: 11 sq. ft,
ROOM: 103 sq. ft, LOW CEILING: 418 sq. ft, ATTIC: 657 sq. ft



Floor Plans are provided by HouseSnappers.com. Measurements are deemed highly reliable but not guaranteed.

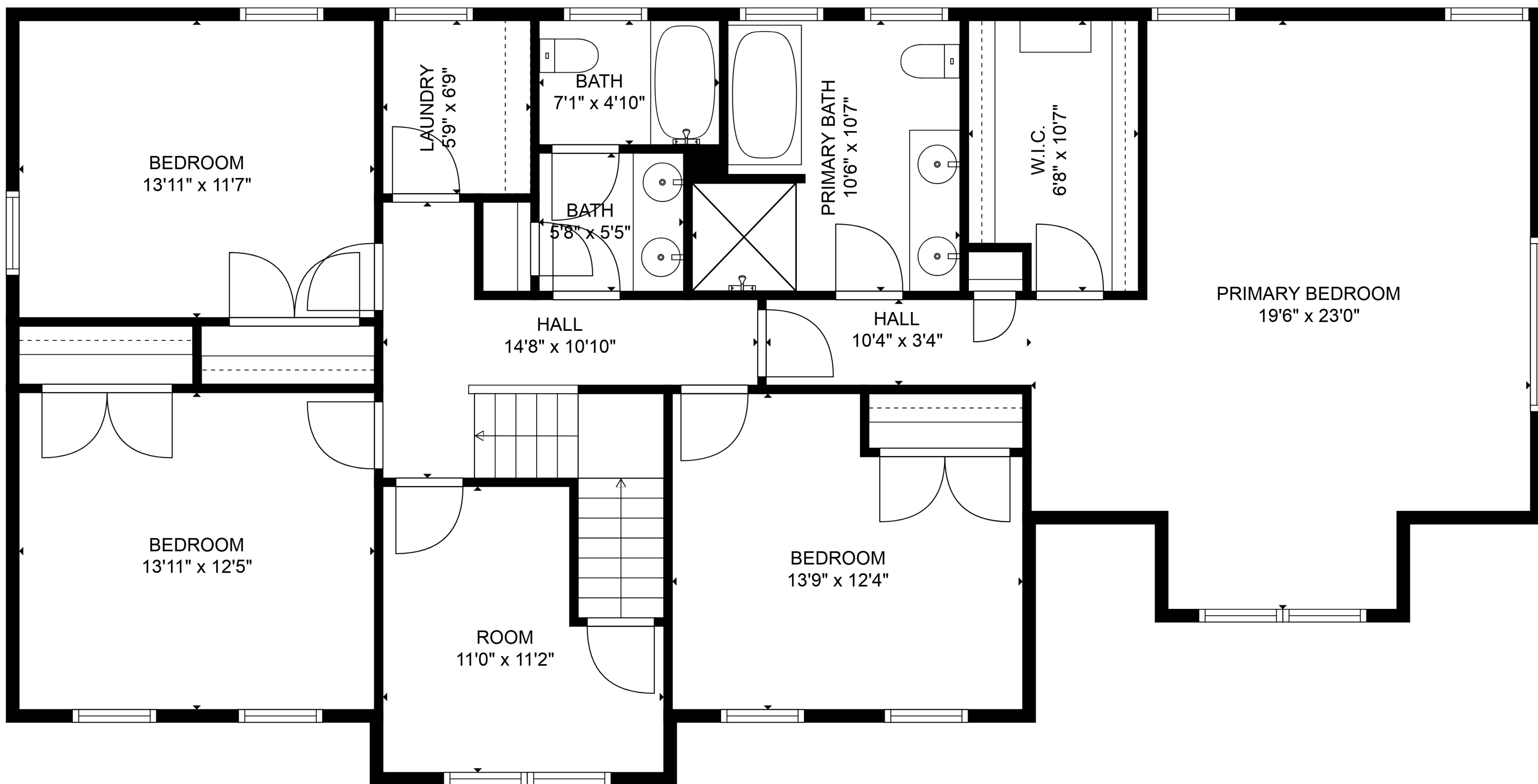


TOTAL: 3714 sq. ft

BELOW GROUND: 783 sq. ft, FLOOR 2: 1547 sq. ft, FLOOR 3: 1384 sq. ft, FLOOR 4: 0 sq. ft
EXCLUDED AREAS: GARAGE: 610 sq. ft, ELECTRICAL ROOM: 105 sq. ft, FIREPLACE: 11 sq. ft,
ROOM: 103 sq. ft, LOW CEILING: 418 sq. ft, ATTIC: 657 sq. ft

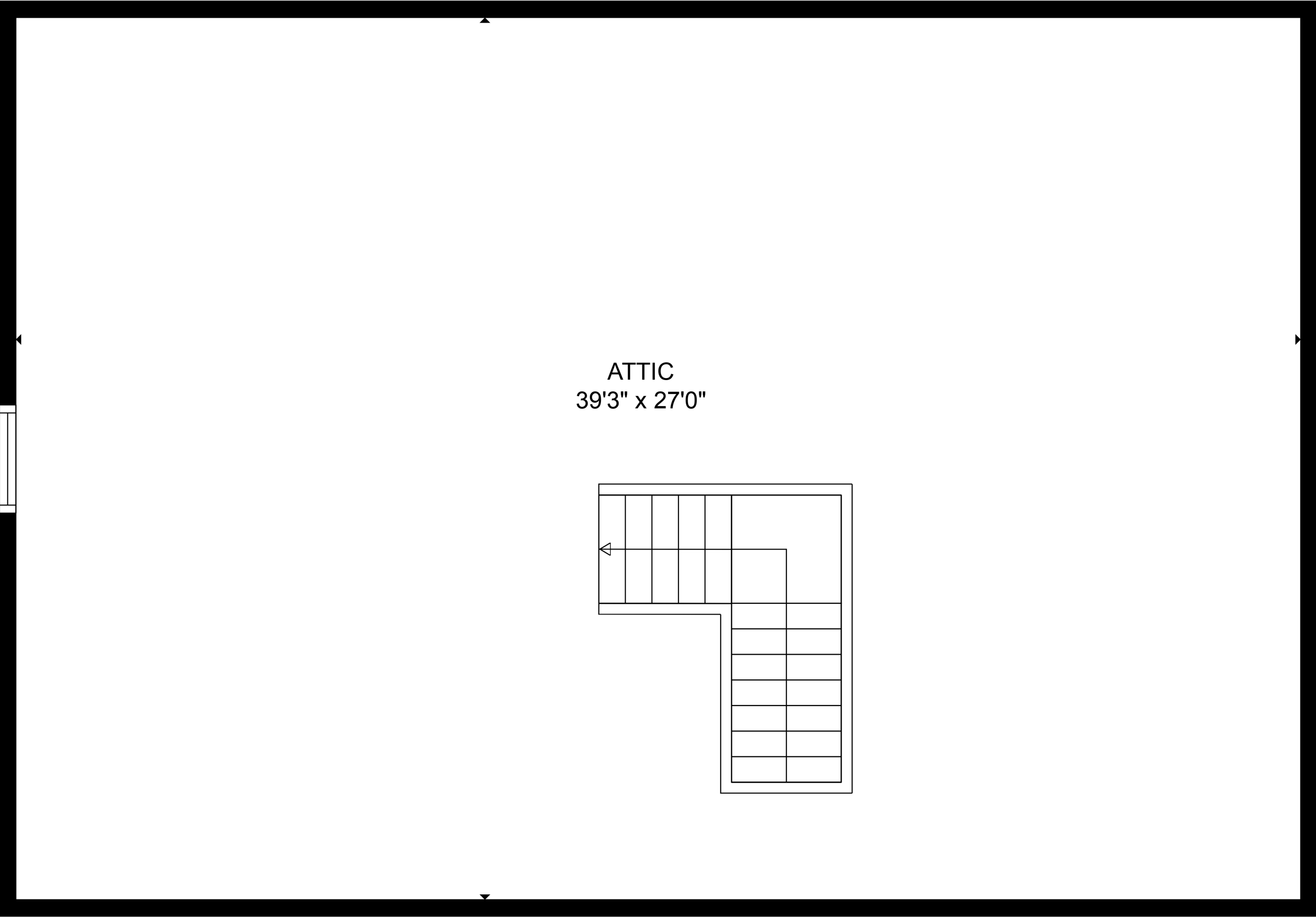


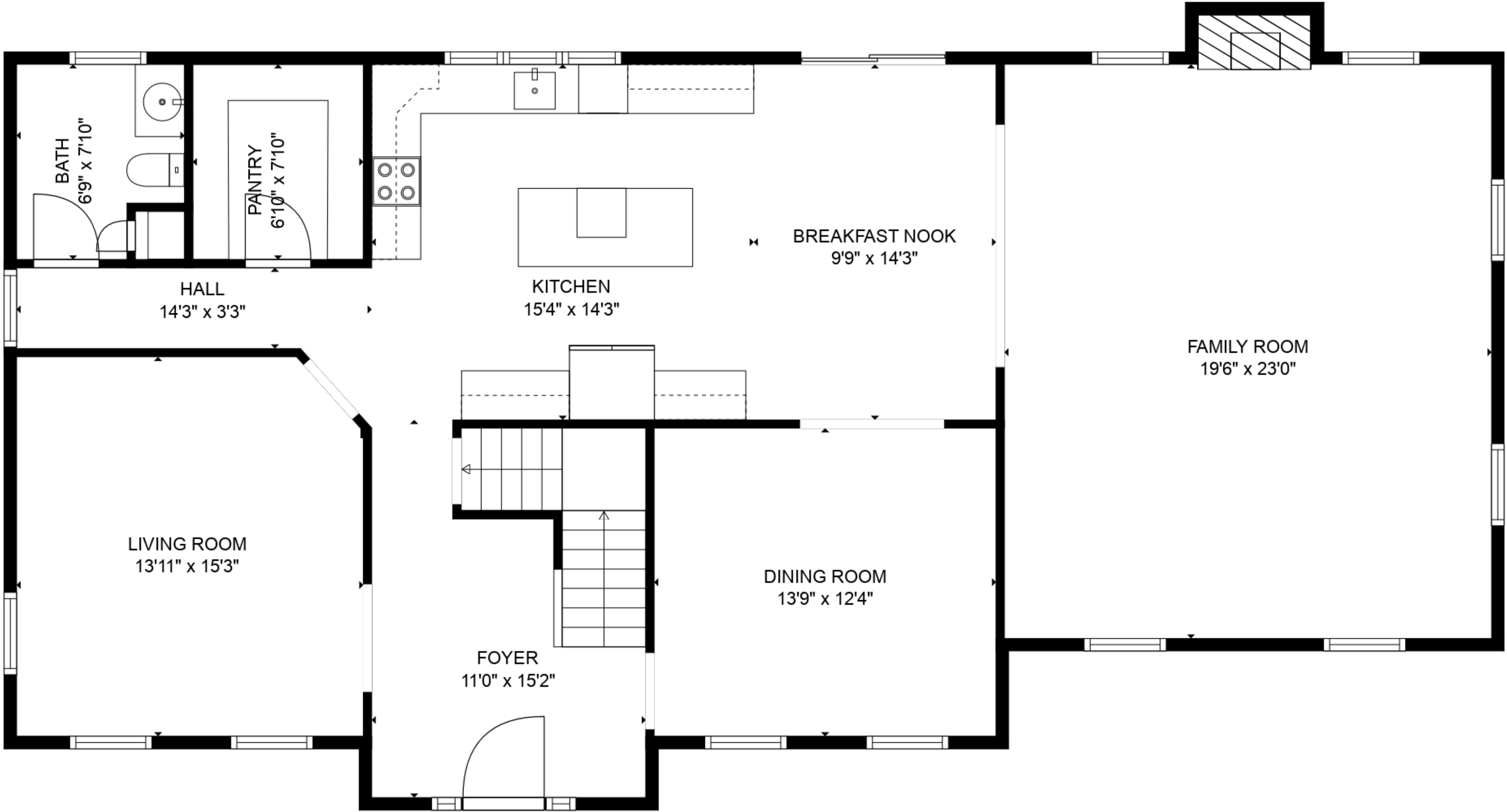
Floor Plans are provided by HouseSnappers.com. Measurements are deemed highly reliable but not guaranteed.



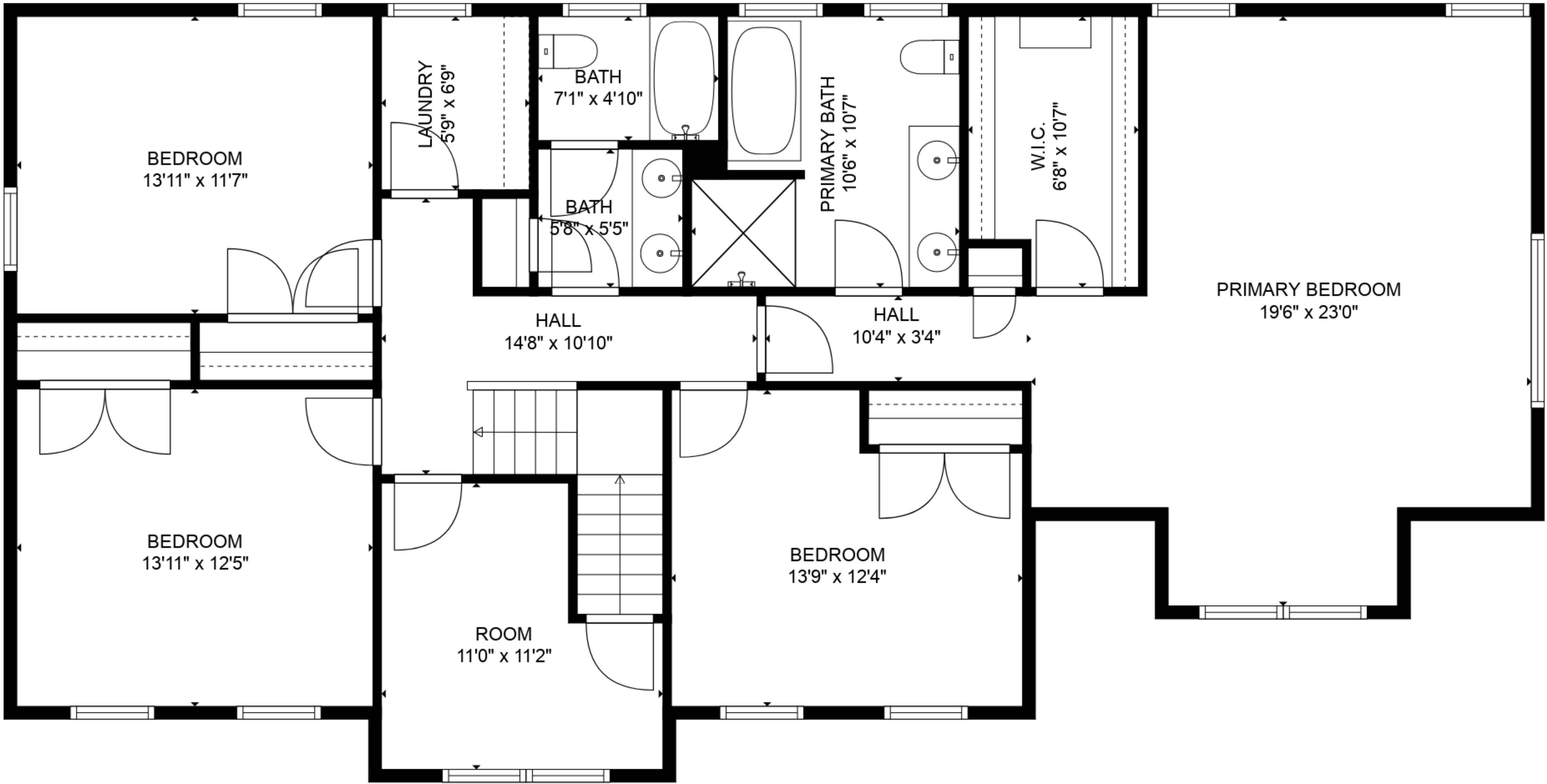
TOTAL: 3714 sq. ft

BELOW GROUND: 783 sq. ft, FLOOR 2: 1547 sq. ft, FLOOR 3: 1384 sq. ft, FLOOR 4: 0 sq. ft
EXCLUDED AREAS: GARAGE: 610 sq. ft, ELECTRICAL ROOM: 105 sq. ft, FIREPLACE: 11 sq. ft,
ROOM: 103 sq. ft, LOW CEILING: 418 sq. ft, ATTIC: 657 sq. ft

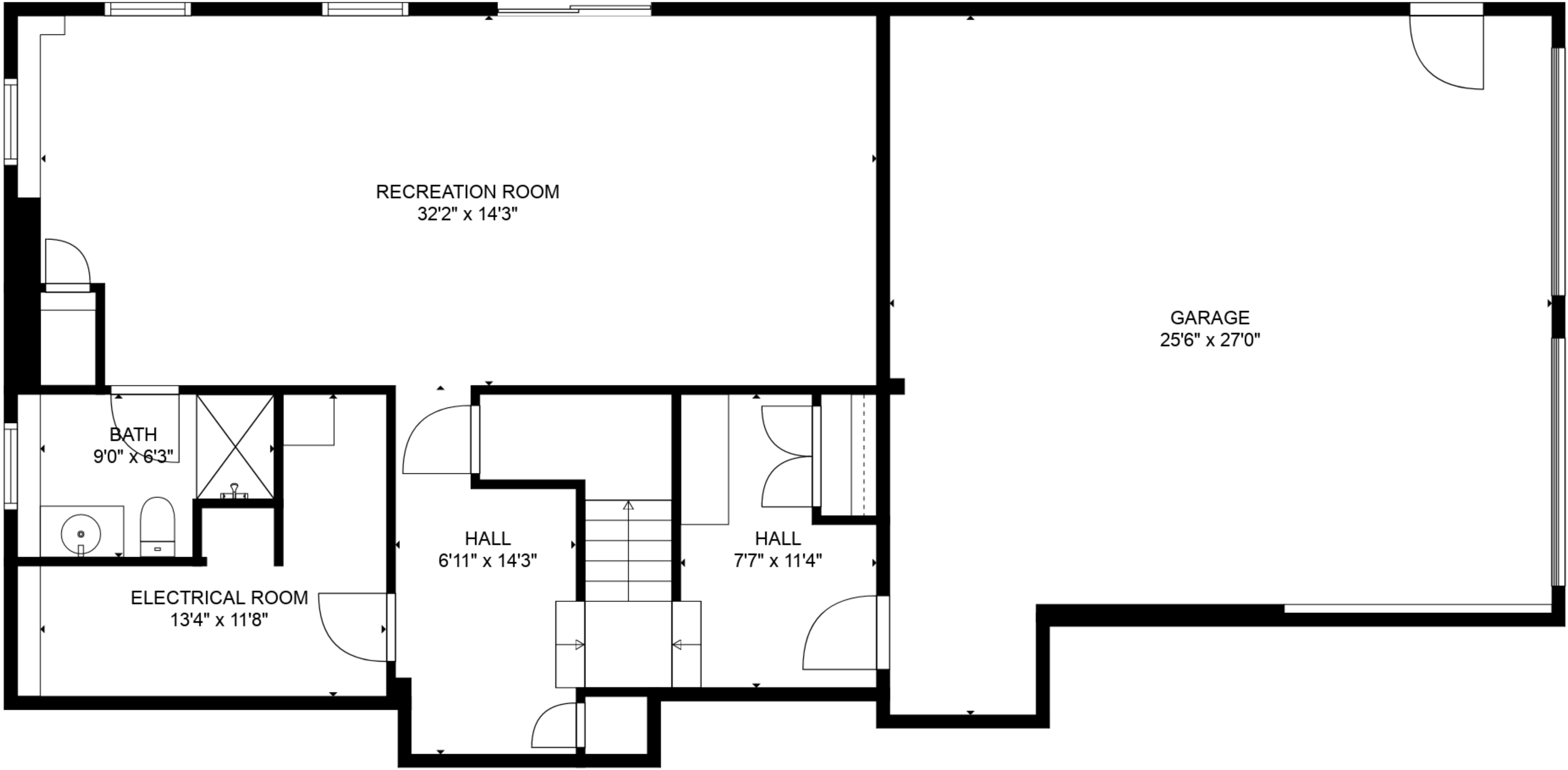




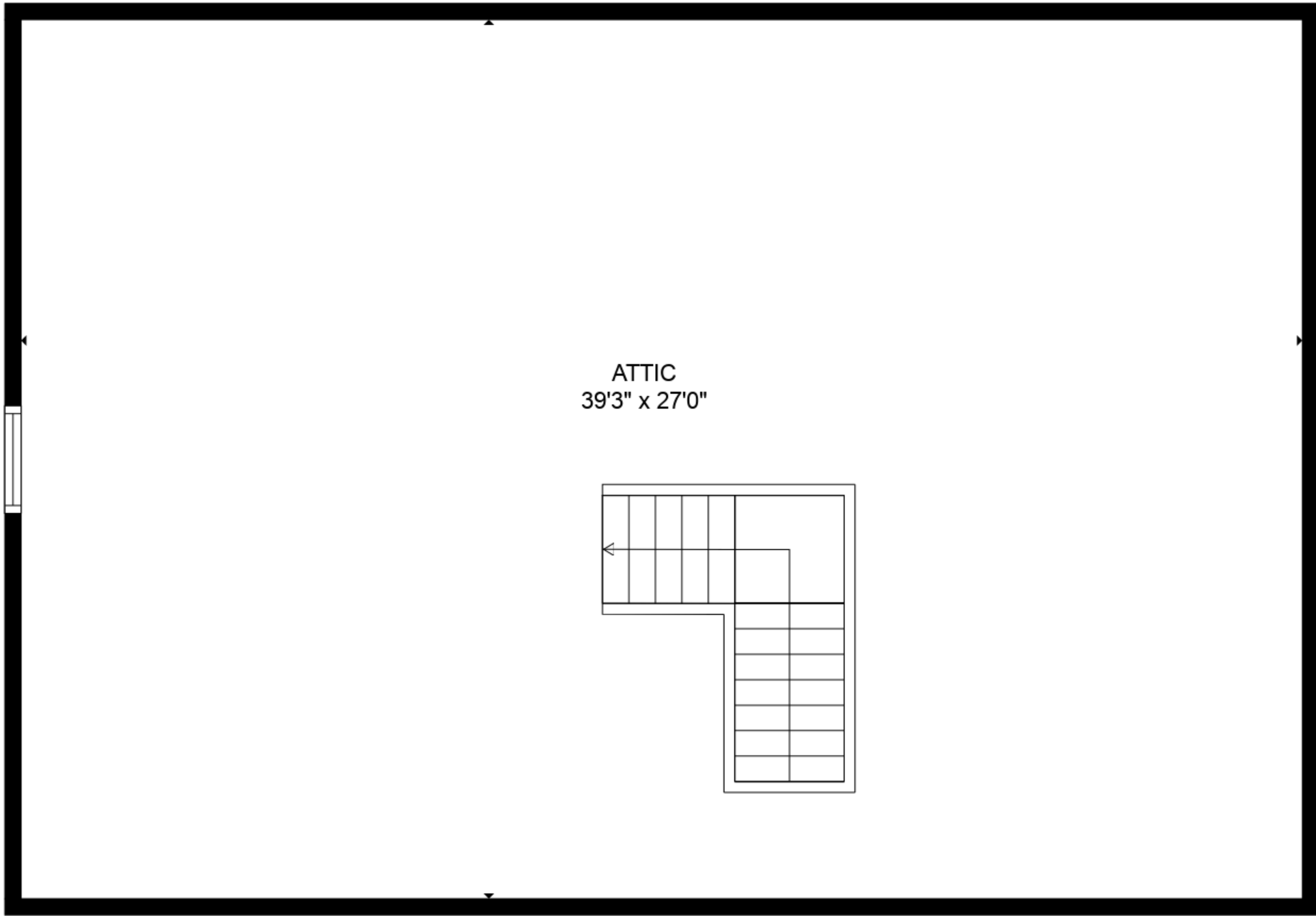
FLOOR 2



FLOOR 3



FLOOR 1



FLOOR 4



TOTAL: 3714 sq. ft
 BELOW GROUND: 783 sq. ft, FLOOR 2: 1547 sq. ft, FLOOR 3: 1384 sq. ft, FLOOR 4: 0 sq. ft
 EXCLUDED AREAS: GARAGE: 610 sq. ft, ELECTRICAL ROOM: 105 sq. ft, FIREPLACE: 11 sq. ft,
 ROOM: 103 sq. ft, LOW CEILING: 418 sq. ft, ATTIC: 657 sq. ft

Floor Plans are provided by HouseSnappers.com. Measurements are deemed highly reliable but not guaranteed.