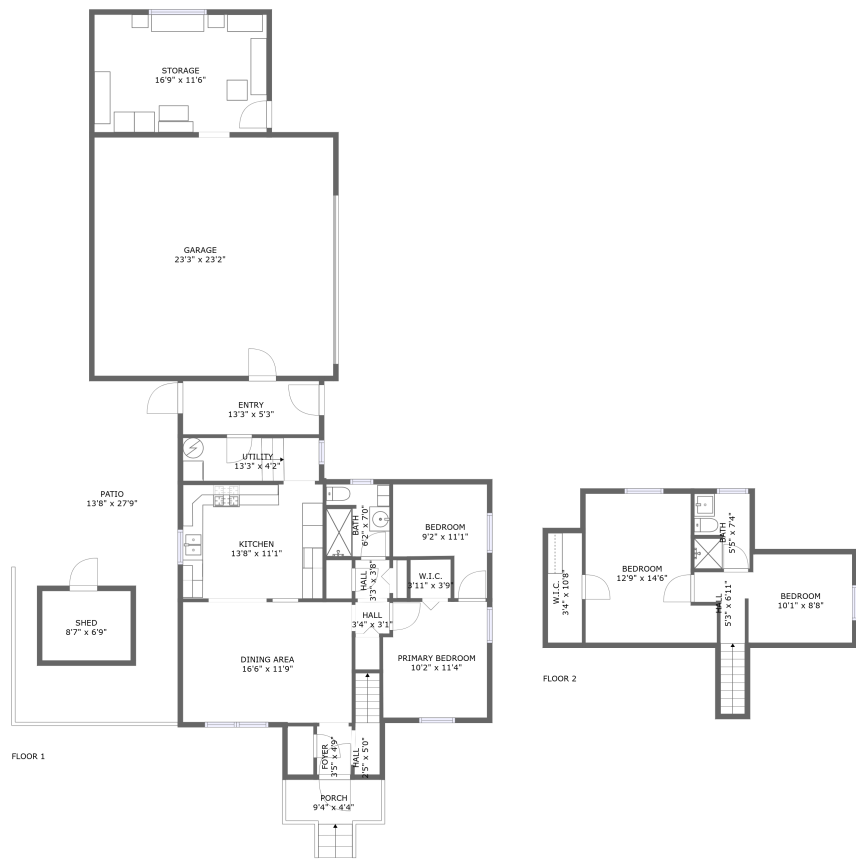




Home report


1209 Spring Beach Way,Cary,IL,US




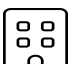
Property summary


 **1** Garages


 **4** Bedrooms

 **2** Bathrooms

 **0** Half baths

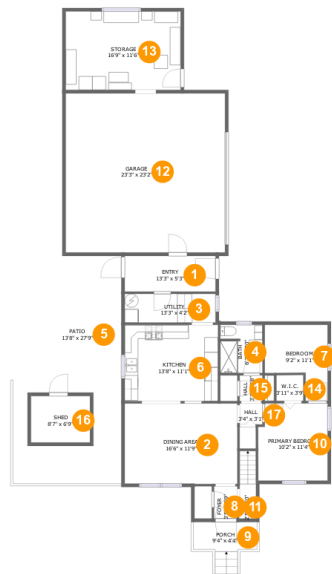
 **2** Floors

 **1,067** Gross living area sqft

 **2,578** Total sqft

Home report

1209 Spring Beach Way,Cary,IL,US



Room dimensions

Floor 1 Total sqft: 2151 Living area: 786

#		Dimensions	sqft	Counted as living area
1	Entry	13'3" x 5'3"	69 sq. ft	No
2	Dining Area	16'6" x 11'9"	194 sq. ft	Yes
3	Utility	13'3" x 4'2"	56 sq. ft	No
4	Bath	6'2" x 7'0"	42 sq. ft	Yes
5	Patio	13'8" x 27'9"	309 sq. ft	No
6	Kitchen	13'8" x 11'1"	152 sq. ft	Yes
7	Bedroom	9'2" x 11'1"	78 sq. ft	Yes
8	Foyer	3'5" x 4'9"	16 sq. ft	Yes
9	Porch	9'4" x 4'4"	38 sq. ft	No
10	Primary Bedroom	10'2" x 11'4"	111 sq. ft	Yes
11	Hall	2'5" x 5'0"	24 sq. ft	Yes

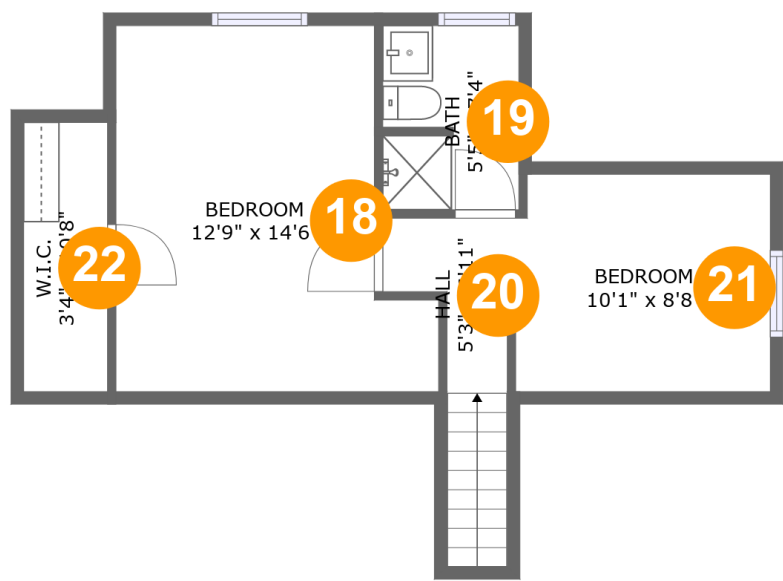
Home report

1209 Spring Beach Way,Cary,IL,US

#		Dimensions	sqft	Counted as living area
12	Garage	23'3" x 23'2"	542 sq. ft	No
13	Storage	16'9" x 11'6"	193 sq. ft	No
14	W.I.C.	3'11" x 3'9"	15 sq. ft	Yes
15	Hall	3'3" x 3'8"	13 sq. ft	Yes
16	Shed	8'7" x 6'9"	59 sq. ft	No
17	Hall	3'4" x 3'1"	10 sq. ft	Yes

Home report

1209 Spring Beach Way,Cary,IL,US



Room dimensions

Floor 2 Total sqft: 427 Living area: 281

#		Dimensions	sqft	Counted as living area
18	Bedroom	12'9" x 14'6"	159 sq. ft	Yes
19	Bath	5'5" x 7'4"	39 sq. ft	Yes
20	Hall	5'3" x 6'11"	41 sq. ft	Yes
21	Bedroom	10'1" x 8'8"	87 sq. ft	No
22	W.I.C.	3'4" x 10'8"	36 sq. ft	No

1 Floor 1 - Entry



Dimensions: 13'3" x 5'3"
Area: 69 sq. ft
Counted as living area: No

Heated: Yes
Finished: Yes
Enclosed: Yes
Contiguous: No
Permitted: Yes
Wet space: No
Addition: No
Conversion: No

2 Floor 1 - Dining Area



Dimensions: 16'6" x 11'9"
Area: 194 sq. ft
Counted as living area: Yes

Heated: Yes
Finished: Yes
Enclosed: Yes
Contiguous: Yes
Permitted: Yes
Wet space: No
Addition: No
Conversion: No

3 Floor 1 - Utility



Dimensions: 13'3" x 4'2"
Area: 56 sq. ft
Counted as living area: No

Heated: Yes
Finished: No
Enclosed: Yes
Contiguous: Yes
Permitted: Yes
Wet space: No
Addition: No
Conversion: No

4 Floor 1 - Bath



Dimensions: 6'2" x 7'0"
Area: 42 sq. ft
Counted as living area: Yes

Heated: Yes
Finished: Yes
Enclosed: Yes
Contiguous: Yes
Permitted: Yes
Wet space: Yes
Addition: No
Conversion: No

5 Floor 1 - Patio



Dimensions: 13'8" x 27'9"
Area: 309 sq. ft
Counted as living area: No

Heated: No
Finished: Yes
Enclosed: No
Contiguous: Yes
Permitted: Yes
Wet space: No
Addition: No
Conversion: No

6 Floor 1 - Kitchen



Dimensions: 13'8" x 11'1"
Area: 152 sq. ft
Counted as living area: Yes

Heated: Yes
Finished: Yes
Enclosed: Yes
Contiguous: Yes
Permitted: Yes
Wet space: No
Addition: No
Conversion: No

7 Floor 1 - Bedroom



Dimensions: 9'2" x 11'1"
Area: 78 sq. ft
Counted as living area: Yes

Heated: Yes
Finished: Yes
Enclosed: Yes
Contiguous: Yes
Permitted: Yes
Wet space: No
Addition: No
Conversion: No

8 Floor 1 - Foyer



Dimensions: 3'5" x 4'9"
Area: 16 sq. ft
Counted as living area: Yes

Heated: Yes
Finished: Yes
Enclosed: Yes
Contiguous: Yes
Permitted: Yes
Wet space: No
Addition: No
Conversion: No

9 Floor 1 - Porch



Dimensions: 9'4" x 4'4"
Area: 38 sq. ft
Counted as living area: No

Heated: No
Finished: Yes
Enclosed: No
Contiguous: Yes
Permitted: Yes
Wet space: No
Addition: No
Conversion: No

10 Floor 1 - Primary Bedroom



Dimensions: 10'2" x 11'4"
Area: 111 sq. ft
Counted as living area: Yes

Heated: Yes
Finished: Yes
Enclosed: Yes
Contiguous: Yes
Permitted: Yes
Wet space: No
Addition: No
Conversion: No

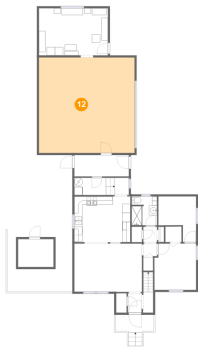
11 Floor 1 - Hall



Dimensions: 2'5" x 5'0"
Area: 24 sq. ft
Counted as living area: Yes

Heated: Yes
Finished: Yes
Enclosed: Yes
Contiguous: Yes
Permitted: Yes
Wet space: No
Addition: No
Conversion: No

12 Floor 1 - Garage



Dimensions: 23'3" x 23'2"
Area: 542 sq. ft
Counted as living area: No

Heated: No
Finished: No
Enclosed: Yes
Contiguous: Yes
Permitted: Yes
Wet space: No
Addition: No
Conversion: No

13 Floor 1 - Storage



Dimensions: 16'9" x 11'6"
Area: 193 sq. ft
Counted as living area: No

Heated: No
Finished: No
Enclosed: No
Contiguous: Yes
Permitted: Yes
Wet space: No
Addition: No
Conversion: No

14 Floor 1 - W.I.C.



Dimensions: 3'11" x 3'9"
Area: 15 sq. ft
Counted as living area: Yes

Heated: Yes
Finished: Yes
Enclosed: Yes
Contiguous: Yes
Permitted: Yes
Wet space: No
Addition: No
Conversion: No

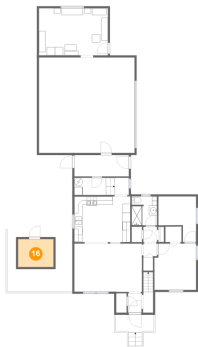
15 Floor 1 - Hall



Dimensions: 3'3" x 3'8"
Area: 13 sq. ft
Counted as living area: Yes

Heated: Yes
Finished: Yes
Enclosed: Yes
Contiguous: Yes
Permitted: Yes
Wet space: No
Addition: No
Conversion: No

16 Floor 1 - Shed



Dimensions: 8'7" x 6'9"
Area: 59 sq. ft
Counted as living area: No

Heated: No
Finished: No
Enclosed: No
Contiguous: Yes
Permitted: Yes
Wet space: No
Addition: No
Conversion: No

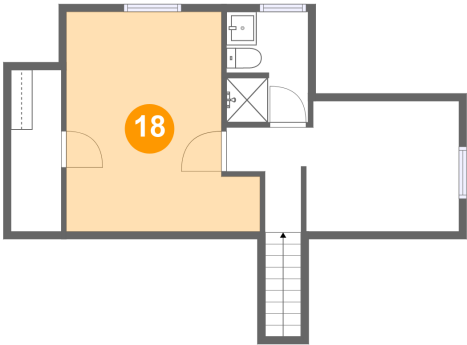
17 Floor 1 - Hall



Dimensions: 3'4" x 3'1"
Area: 10 sq. ft
Counted as living area: Yes

Heated: Yes
Finished: Yes
Enclosed: Yes
Contiguous: Yes
Permitted: Yes
Wet space: No
Addition: No
Conversion: No

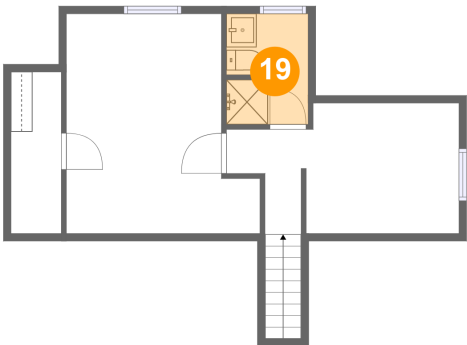
18 Floor 2 - Bedroom



Dimensions: 12'9" x 14'6"
Area: 159 sq. ft
Counted as living area: Yes

Heated: Yes
Finished: Yes
Enclosed: Yes
Contiguous: Yes
Permitted: Yes
Wet space: No
Addition: No
Conversion: No

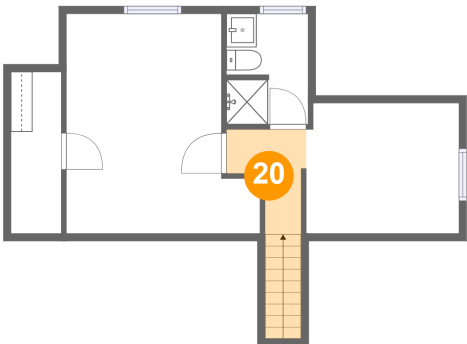
19 Floor 2 - Bath



Dimensions: 5'5" x 7'4"
Area: 39 sq. ft
Counted as living area: Yes

Heated: Yes
Finished: Yes
Enclosed: Yes
Contiguous: Yes
Permitted: Yes
Wet space: Yes
Addition: No
Conversion: No

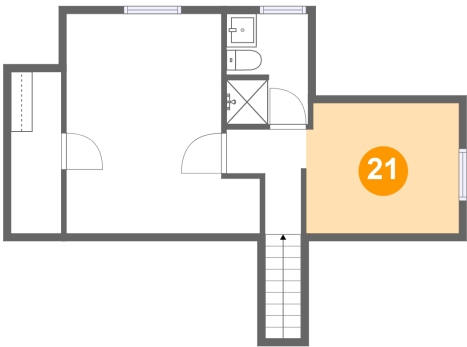
20 Floor 2 - Hall



Dimensions: 5'3" x 6'11"
Area: 41 sq. ft
Counted as living area: Yes

Heated: Yes
Finished: Yes
Enclosed: Yes
Contiguous: Yes
Permitted: Yes
Wet space: No
Addition: No
Conversion: No

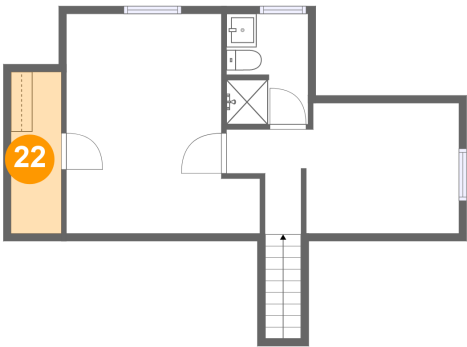
21 Floor 2 - Bedroom



Dimensions: 10'1" x 8'8"
Area: 87 sq. ft
Counted as living area: No

Heated: Yes
Finished: Yes
Enclosed: Yes
Contiguous: Yes
Permitted: Yes
Wet space: No
Addition: No
Conversion: No

22 Floor 2 - W.I.C.



Dimensions: 3'4" x 10'8"
Area: 36 sq. ft
Counted as living area: No

Heated: Yes
Finished: Yes
Enclosed: Yes
Contiguous: Yes
Permitted: Yes
Wet space: No
Addition: No
Conversion: No