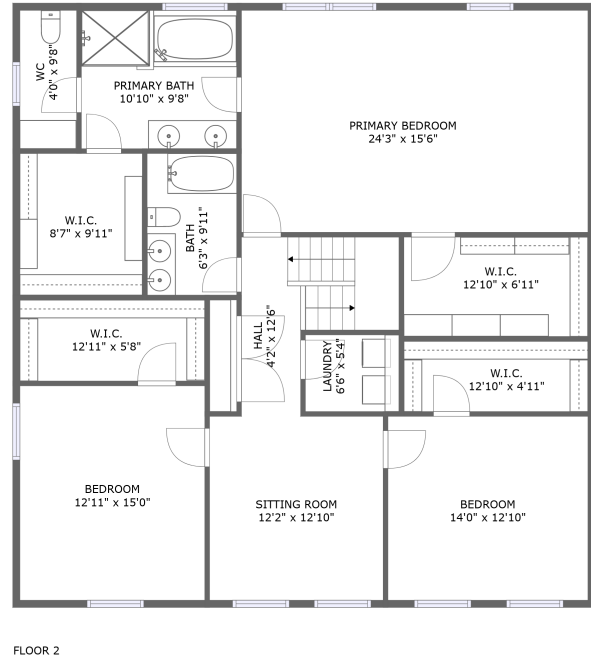
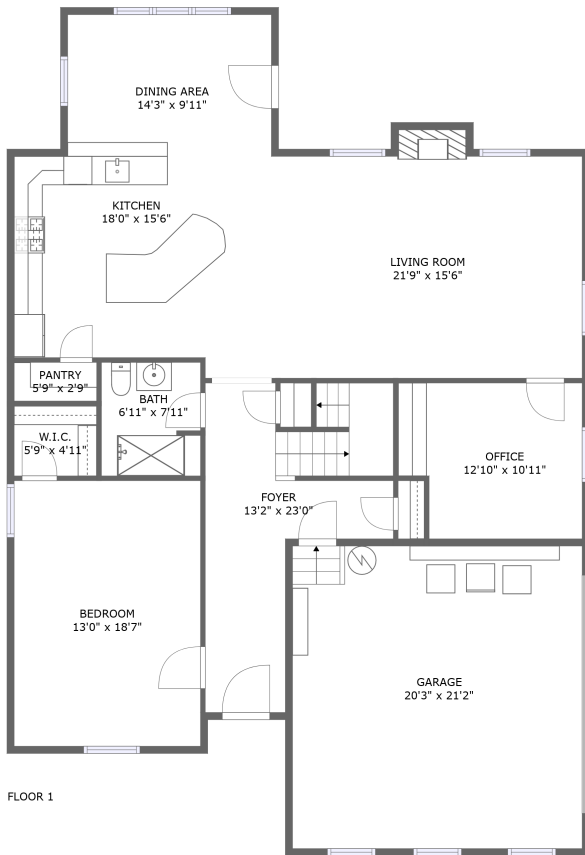




# 3670 Old Woods Rd, Quinton, VA, US



## Property summary


 **1** Garages

 **4** Bedrooms

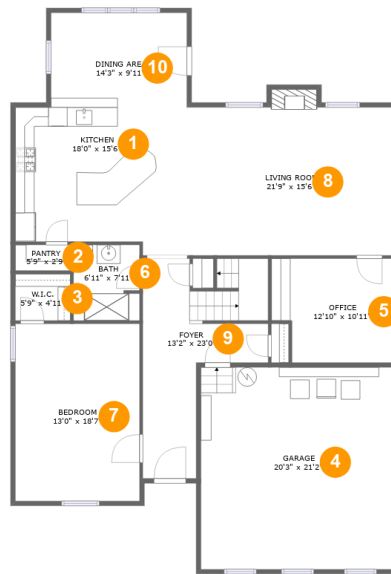
 **3** Bathrooms

 **0** Half baths

 **2** Floors

 **3,274** Gross living area sqft

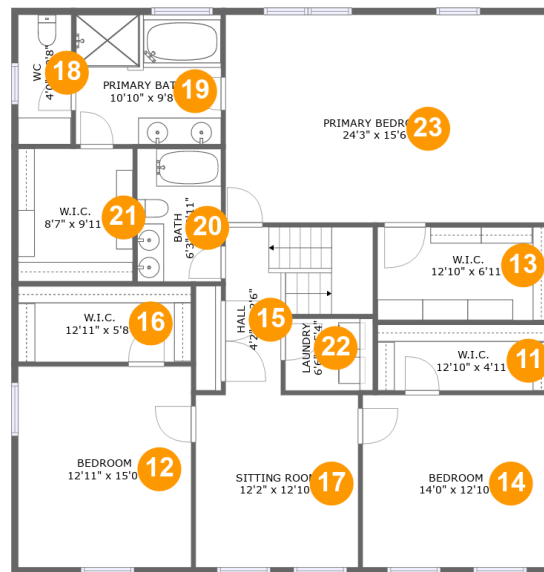
 **3,739** Total sqft

**3670 Old Woods Rd, Quinton, VA, US****Room dimensions**

Floor 1

Total sqft: 2020 Living area: 1555

#		Dimensions	sqft	Counted as living area
1	Kitchen	18'0" x 15'6"	260 sq. ft	Yes
2	Pantry	5'9" x 2'9"	16 sq. ft	Yes
3	W.I.C.	5'9" x 4'11"	28 sq. ft	Yes
4	Garage	20'3" x 21'2"	428 sq. ft	No
5	Office	12'10" x 10'11"	131 sq. ft	Yes
6	Bath	6'11" x 7'11"	54 sq. ft	Yes
7	Bedroom	13'0" x 18'7"	242 sq. ft	Yes
8	Living Room	21'9" x 15'6"	346 sq. ft	Yes
9	Foyer	13'2" x 23'0"	198 sq. ft	Yes
10	Dining Area	14'3" x 9'11"	141 sq. ft	Yes

**3670 Old Woods Rd, Quinton, VA, US****Room dimensions**

Floor 2

Total sqft: 1719 Living area: 1719

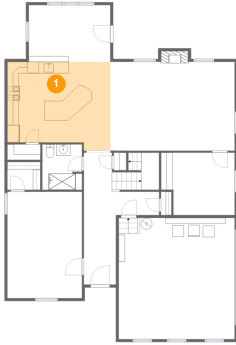
#		Dimensions	sqft	Counted as living area
11	W.I.C.	12'10" x 4'11"	63 sq. ft	Yes
12	Bedroom	12'11" x 15'0"	194 sq. ft	Yes
13	W.I.C.	12'10" x 6'11"	89 sq. ft	Yes
14	Bedroom	14'0" x 12'10"	180 sq. ft	Yes
15	Hall	4'2" x 12'6"	97 sq. ft	Yes
16	W.I.C.	12'11" x 5'8"	73 sq. ft	Yes
17	Sitting Room	12'2" x 12'10"	156 sq. ft	Yes
18	WC	4'0" x 9'8"	38 sq. ft	Yes
19	Primary Bath	10'10" x 9'8"	105 sq. ft	Yes
20	Bath	6'3" x 9'11"	62 sq. ft	Yes
21	W.I.C.	8'7" x 9'11"	85 sq. ft	Yes

**3670 Old Woods Rd,Quinton,VA,US**

#		Dimensions	sqft	Counted as living area
22	Laundry	6'6" x 5'4"	35 sq. ft	Yes
23	Primary Bedroom	24'3" x 15'6"	376 sq. ft	Yes

# 3670 Old Woods Rd, Quinton, VA, US

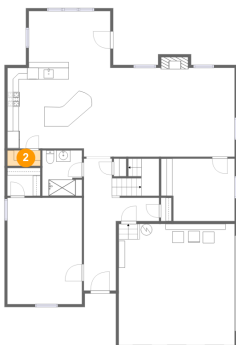
## 1 Floor 1 - Kitchen



**Dimensions:** 18'0" x 15'6"  
**Area:** 260 sq. ft  
**Counted as living area:** Yes

**Heated:** Yes  
**Finished:** Yes  
**Enclosed:** Yes  
**Contiguous:** Yes  
**Permitted:** Yes  
**Wet space:** No  
**Addition:** No  
**Conversion:** No

## 2 Floor 1 - Pantry

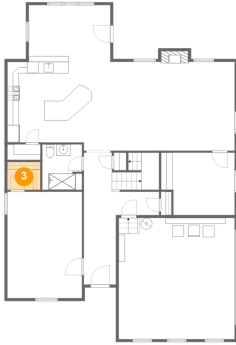


**Dimensions:** 5'9" x 2'9"  
**Area:** 16 sq. ft  
**Counted as living area:** Yes

**Heated:** Yes  
**Finished:** Yes  
**Enclosed:** Yes  
**Contiguous:** Yes  
**Permitted:** Yes  
**Wet space:** No  
**Addition:** No  
**Conversion:** No

# 3670 Old Woods Rd, Quinton, VA, US

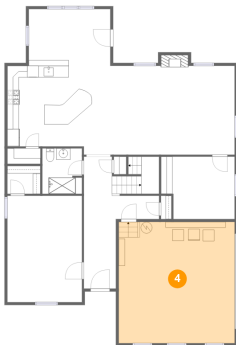
## 3 Floor 1 - W.I.C.



Dimensions: 5'9" x 4'11"  
Area: 28 sq. ft  
Counted as living area: Yes

Heated: Yes  
Finished: Yes  
Enclosed: Yes  
Contiguous: Yes  
Permitted: Yes  
Wet space: No  
Addition: No  
Conversion: No

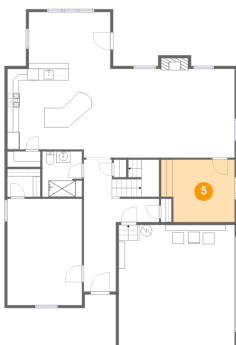
## 4 Floor 1 - Garage



Dimensions: 20'3" x 21'2"  
Area: 428 sq. ft  
Counted as living area: No

Heated: No  
Finished: No  
Enclosed: Yes  
Contiguous: Yes  
Permitted: Yes  
Wet space: No  
Addition: No  
Conversion: No

## 5 Floor 1 - Office

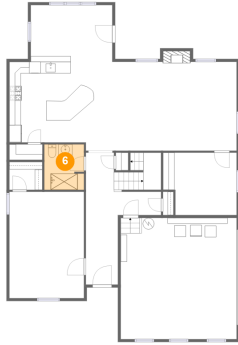


Dimensions: 12'10" x 10'11"  
Area: 131 sq. ft  
Counted as living area: Yes

Heated: Yes  
Finished: Yes  
Enclosed: Yes  
Contiguous: Yes  
Permitted: Yes  
Wet space: No  
Addition: No  
Conversion: No

# 3670 Old Woods Rd, Quinton, VA, US

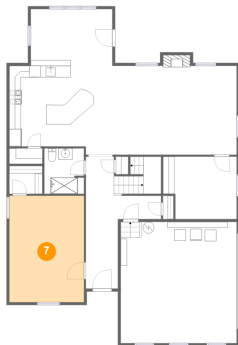
## 6 Floor 1 - Bath



Dimensions: 6'11" x 7'11"  
Area: 54 sq. ft  
Counted as living area: Yes

Heated: Yes  
Finished: Yes  
Enclosed: Yes  
Contiguous: Yes  
Permitted: Yes  
Wet space: Yes  
Addition: No  
Conversion: No

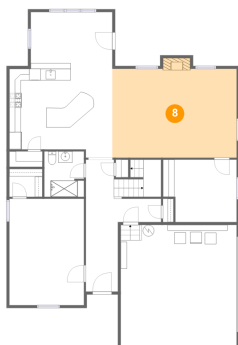
## 7 Floor 1 - Bedroom



Dimensions: 13'0" x 18'7"  
Area: 242 sq. ft  
Counted as living area: Yes

Heated: Yes  
Finished: Yes  
Enclosed: Yes  
Contiguous: Yes  
Permitted: Yes  
Wet space: No  
Addition: No  
Conversion: No

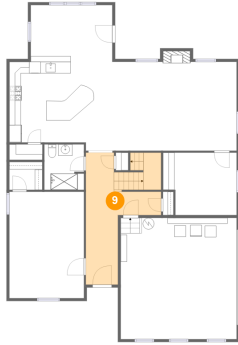
## 8 Floor 1 - Living Room



Dimensions: 21'9" x 15'6"  
Area: 346 sq. ft  
Counted as living area: Yes

Heated: Yes  
Finished: Yes  
Enclosed: Yes  
Contiguous: Yes  
Permitted: Yes  
Wet space: No  
Addition: No  
Conversion: No

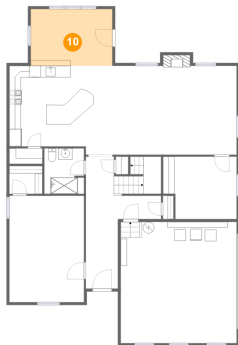
**9** Floor 1 - Foyer



Dimensions: 13'2" x 23'0"  
Area: 198 sq. ft  
Counted as living area: Yes

Heated: Yes  
Finished: Yes  
Enclosed: Yes  
Contiguous: Yes  
Permitted: Yes  
Wet space: No  
Addition: No  
Conversion: No

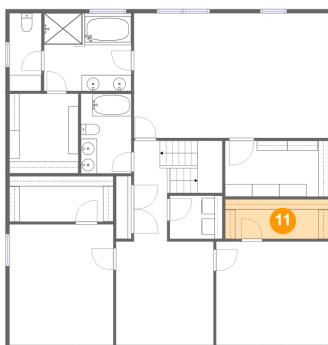
**10** Floor 1 - Dining Area



Dimensions: 14'3" x 9'11"  
Area: 141 sq. ft  
Counted as living area: Yes

Heated: Yes  
Finished: Yes  
Enclosed: Yes  
Contiguous: Yes  
Permitted: Yes  
Wet space: No  
Addition: No  
Conversion: No

**11** Floor 2 - W.I.C.

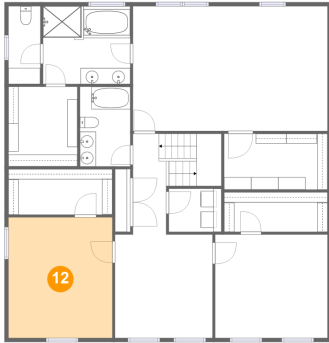


Dimensions: 12'10" x 4'11"  
Area: 63 sq. ft  
Counted as living area: Yes

Heated: Yes  
Finished: Yes  
Enclosed: Yes  
Contiguous: Yes  
Permitted: Yes  
Wet space: No  
Addition: No  
Conversion: No



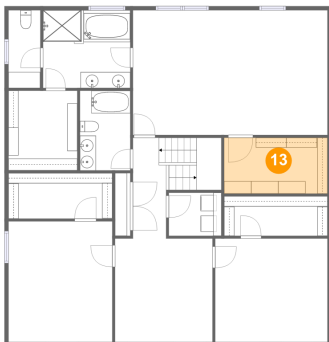
**12** Floor 2 - Bedroom



Dimensions: 12'11" x 15'0"  
Area: 194 sq. ft  
Counted as living area: Yes

Heated: Yes  
Finished: Yes  
Enclosed: Yes  
Contiguous: Yes  
Permitted: Yes  
Wet space: No  
Addition: No  
Conversion: No

**13** Floor 2 - W.I.C.



Dimensions: 12'10" x 6'11"  
Area: 89 sq. ft  
Counted as living area: Yes

Heated: Yes  
Finished: Yes  
Enclosed: Yes  
Contiguous: Yes  
Permitted: Yes  
Wet space: No  
Addition: No  
Conversion: No

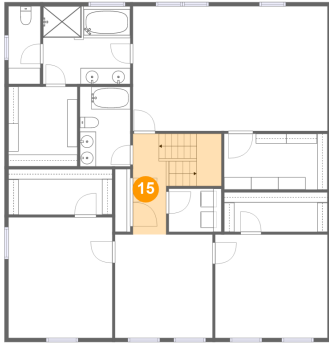
**14** Floor 2 - Bedroom



Dimensions: 14'0" x 12'10"  
Area: 180 sq. ft  
Counted as living area: Yes

Heated: Yes  
Finished: Yes  
Enclosed: Yes  
Contiguous: Yes  
Permitted: Yes  
Wet space: No  
Addition: No  
Conversion: No

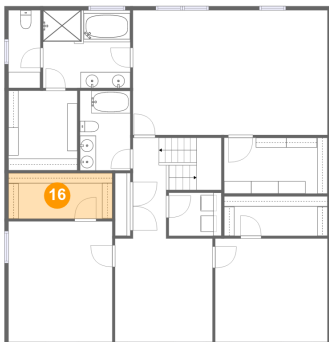
**15** Floor 2 - Hall



Dimensions: 4'2" x 12'6"  
Area: 97 sq. ft  
Counted as living area: Yes

Heated: Yes  
Finished: Yes  
Enclosed: Yes  
Contiguous: Yes  
Permitted: Yes  
Wet space: No  
Addition: No  
Conversion: No

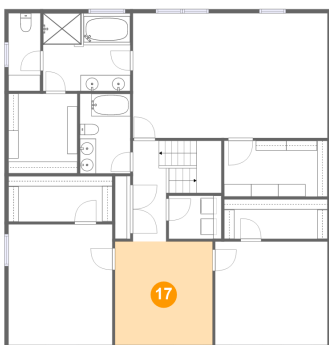
**16** Floor 2 - W.I.C.



Dimensions: 12'11" x 5'8"  
Area: 73 sq. ft  
Counted as living area: Yes

Heated: Yes  
Finished: Yes  
Enclosed: Yes  
Contiguous: Yes  
Permitted: Yes  
Wet space: No  
Addition: No  
Conversion: No

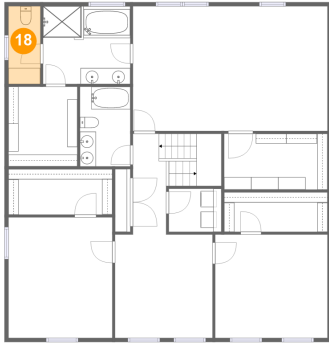
**17** Floor 2 - Sitting Room



Dimensions: 12'2" x 12'10"  
Area: 156 sq. ft  
Counted as living area: Yes

Heated: Yes  
Finished: Yes  
Enclosed: Yes  
Contiguous: Yes  
Permitted: Yes  
Wet space: No  
Addition: No  
Conversion: No

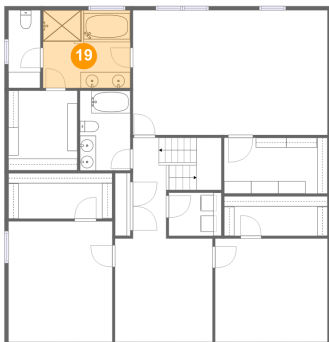
**18** Floor 2 - WC



Dimensions: 4'0" x 9'8"  
Area: 38 sq. ft  
Counted as living area: Yes

Heated: Yes  
Finished: Yes  
Enclosed: Yes  
Contiguous: Yes  
Permitted: Yes  
Wet space: Yes  
Addition: No  
Conversion: No

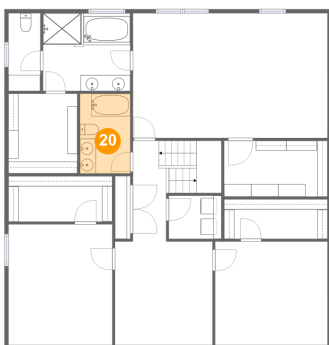
**19** Floor 2 - Primary Bath



Dimensions: 10'10" x 9'8"  
Area: 105 sq. ft  
Counted as living area: Yes

Heated: Yes  
Finished: Yes  
Enclosed: Yes  
Contiguous: Yes  
Permitted: Yes  
Wet space: Yes  
Addition: No  
Conversion: No

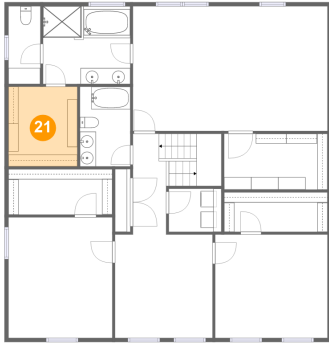
**20** Floor 2 - Bath



Dimensions: 6'3" x 9'11"  
Area: 62 sq. ft  
Counted as living area: Yes

Heated: Yes  
Finished: Yes  
Enclosed: Yes  
Contiguous: Yes  
Permitted: Yes  
Wet space: Yes  
Addition: No  
Conversion: No

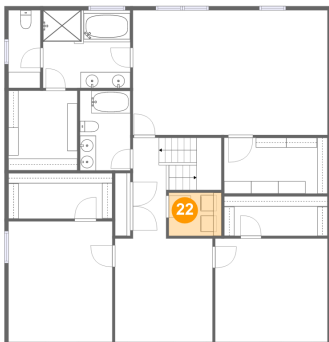
**21** Floor 2 - W.I.C.



Dimensions: 8'7" x 9'11"  
Area: 85 sq. ft  
Counted as living area: Yes

Heated: Yes  
Finished: Yes  
Enclosed: Yes  
Contiguous: Yes  
Permitted: Yes  
Wet space: No  
Addition: No  
Conversion: No

**22** Floor 2 - Laundry



Dimensions: 6'6" x 5'4"  
Area: 35 sq. ft  
Counted as living area: Yes

Heated: Yes  
Finished: Yes  
Enclosed: Yes  
Contiguous: Yes  
Permitted: Yes  
Wet space: No  
Addition: No  
Conversion: No

**23** Floor 2 - Primary Bedroom



Dimensions: 24'3" x 15'6"  
Area: 376 sq. ft  
Counted as living area: Yes

Heated: Yes  
Finished: Yes  
Enclosed: Yes  
Contiguous: Yes  
Permitted: Yes  
Wet space: No  
Addition: No  
Conversion: No