



Home report


4819 Southwest Hamilton Street, Bridlemile, Portland,  
Multnomah County, Oregon, United States, 97221





Property summary


 **0** Garages


 **4** Bedrooms

 **3** Bathrooms

 **0** Half baths

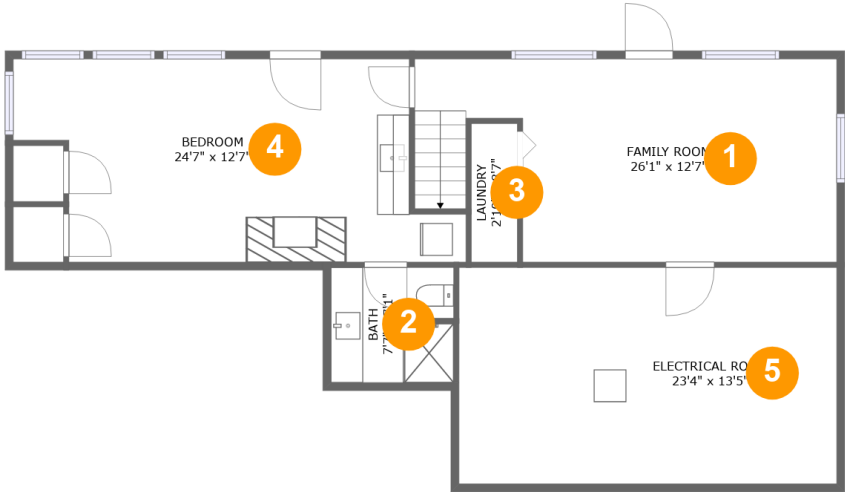
 **2** Floors

 **2,163** Gross living area sqft

 **3,220** Total sqft

Home report

4819 Southwest Hamilton Street, Bridlemile, Portland,  
Multnomah County, Oregon, United States, 97221



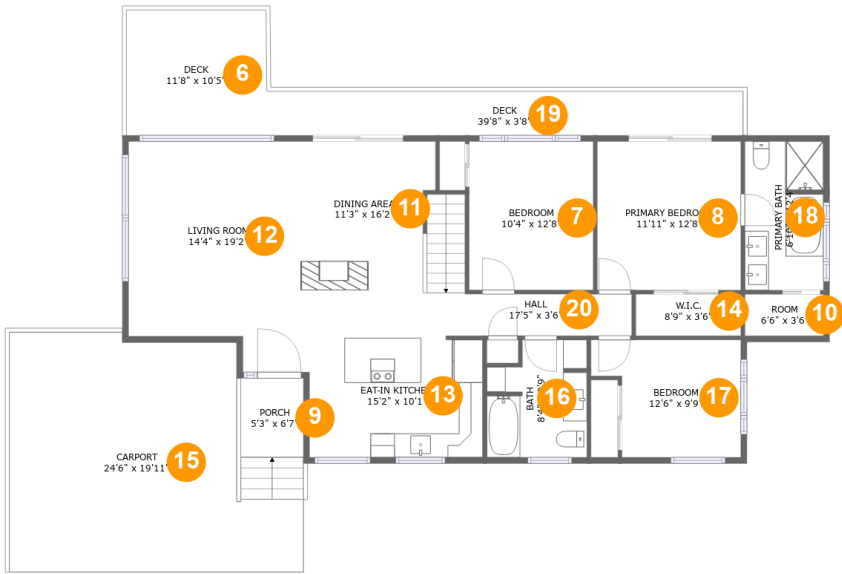
Room dimensions

Floor 1 Total sqft: 1098    Living area: 763

#		Dimensions	sqft	Counted as living area
1	Family Room	26'1" x 12'7"	286 sq. ft	Yes
2	Bath	7'7" x 7'1"	53 sq. ft	Yes
3	Laundry	2'10" x 8'7"	24 sq. ft	Yes
4	Bedroom	24'7" x 12'7"	292 sq. ft	Yes
5	Electrical Room	23'4" x 13'5"	313 sq. ft	No

Home report

4819 Southwest Hamilton Street, Bridlemile, Portland,  
Multnomah County, Oregon, United States, 97221



Room dimensions

Floor 2 Total sqft: 2122    Living area: 1400

#		Dimensions	sqft	Counted as living area
6	Deck	11'8" x 10'5"	122 sq. ft	No
7	Bedroom	10'4" x 12'8"	129 sq. ft	Yes
8	Primary Bedroom	11'11" x 12'8"	149 sq. ft	Yes
9	Porch	5'3" x 6'7"	34 sq. ft	No
10	Room	6'6" x 3'6"	23 sq. ft	Yes
11	Dining Area	11'3" x 16'2"	169 sq. ft	Yes
12	Living Room	14'4" x 19'2"	247 sq. ft	Yes
13	Eat-in Kitchen	15'2" x 10'1"	147 sq. ft	Yes
14	W.I.C.	8'9" x 3'6"	30 sq. ft	Yes
15	Carport	24'6" x 19'11"	421 sq. ft	No
16	Bath	8'4" x 9'9"	73 sq. ft	Yes

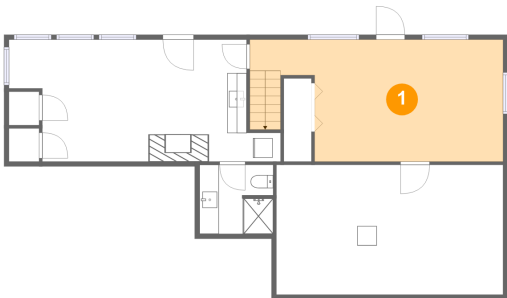
Home report

4819 Southwest Hamilton Street, Bridlemile, Portland,  
Multnomah County, Oregon, United States, 97221

#		Dimensions	sqft	Counted as living area
17	Bedroom	12'6" x 9'9"	105 sq. ft	Yes
18	Primary Bath	6'10" x 12'4"	81 sq. ft	Yes
19	Deck	39'8" x 3'8"	145 sq. ft	No
20	Hall	17'5" x 3'6"	88 sq. ft	Yes

4819 Southwest Hamilton Street, Bridlemile, Portland,  
Multnomah County, Oregon, United States, 97221

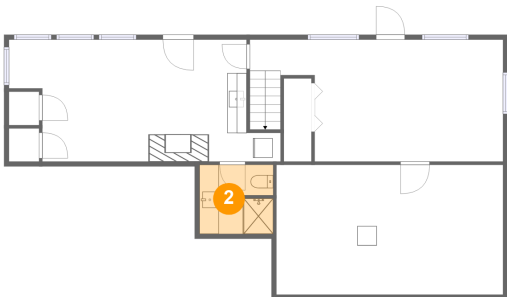
1 Floor 1 - Family Room



Dimensions: 26'1" x 12'7"  
Area: 286 sq. ft  
Counted as living area: Yes

Heated: Yes  
Finished: Yes  
Enclosed: Yes  
Contiguous: Yes  
Permitted: Yes  
Wet space: No  
Addition: No  
Conversion: No

2 Floor 1 - Bath



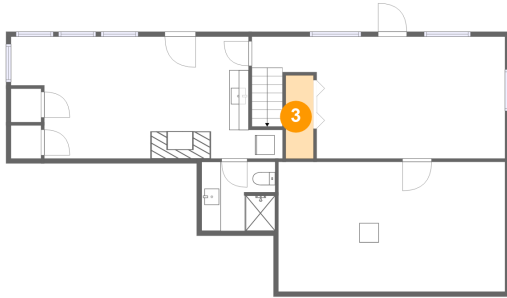
Dimensions: 7'7" x 7'1"  
Area: 53 sq. ft  
Counted as living area: Yes

Heated: Yes  
Finished: Yes  
Enclosed: Yes  
Contiguous: Yes  
Permitted: Yes  
Wet space: Yes  
Addition: No  
Conversion: No

## Home report

4819 Southwest Hamilton Street, Bridlemile, Portland,  
Multnomah County, Oregon, United States, 97221

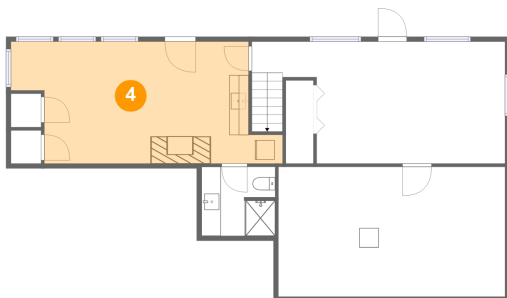
### 3 Floor 1 - Laundry



Dimensions: 2'10" x 8'7"  
Area: 24 sq. ft  
Counted as living area: Yes

Heated: Yes  
Finished: Yes  
Enclosed: Yes  
Contiguous: Yes  
Permitted: Yes  
Wet space: No  
Addition: No  
Conversion: No

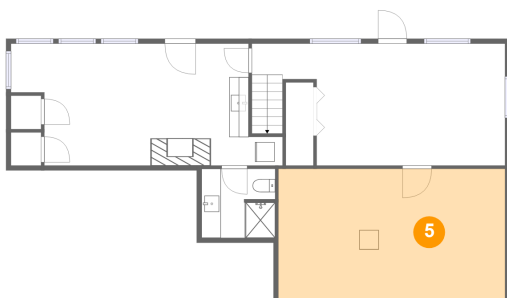
### 4 Floor 1 - Bedroom



Dimensions: 24'7" x 12'7"  
Area: 292 sq. ft  
Counted as living area: Yes

Heated: Yes  
Finished: Yes  
Enclosed: Yes  
Contiguous: Yes  
Permitted: Yes  
Wet space: No  
Addition: No  
Conversion: No

### 5 Floor 1 - Electrical Room



Dimensions: 23'4" x 13'5"  
Area: 313 sq. ft  
Counted as living area: No

Heated: No  
Finished: No  
Enclosed: Yes  
Contiguous: Yes  
Permitted: Yes  
Wet space: No  
Addition: No  
Conversion: No

## Home report

4819 Southwest Hamilton Street, Bridlemile, Portland,  
Multnomah County, Oregon, United States, 97221

### 6 Floor 2 - Deck



Dimensions: 11'8" x 10'5"  
Area: 122 sq. ft  
Counted as living area: No

Heated: No  
Finished: Yes  
Enclosed: No  
Contiguous: Yes  
Permitted: Yes  
Wet space: No  
Addition: No  
Conversion: No

### 7 Floor 2 - Bedroom



Dimensions: 10'4" x 12'8"  
Area: 129 sq. ft  
Counted as living area: Yes

Heated: Yes  
Finished: Yes  
Enclosed: Yes  
Contiguous: Yes  
Permitted: Yes  
Wet space: No  
Addition: No  
Conversion: No

### 8 Floor 2 - Primary Bedroom



Dimensions: 11'11" x 12'8"  
Area: 149 sq. ft  
Counted as living area: Yes

Heated: Yes  
Finished: Yes  
Enclosed: Yes  
Contiguous: Yes  
Permitted: Yes  
Wet space: No  
Addition: No  
Conversion: No

4819 Southwest Hamilton Street, Bridlemile, Portland,  
Multnomah County, Oregon, United States, 97221

9 Floor 2 - Porch



Dimensions: 5'3" x 6'7"  
Area: 34 sq. ft  
Counted as living area: No

Heated: No  
Finished: Yes  
Enclosed: No  
Contiguous: Yes  
Permitted: Yes  
Wet space: No  
Addition: No  
Conversion: No

10 Floor 2 - Room



Dimensions: 6'6" x 3'6"  
Area: 23 sq. ft  
Counted as living area: Yes

Heated: Yes  
Finished: Yes  
Enclosed: Yes  
Contiguous: Yes  
Permitted: Yes  
Wet space: No  
Addition: No  
Conversion: No

11 Floor 2 - Dining Area



Dimensions: 11'3" x 16'2"  
Area: 169 sq. ft  
Counted as living area: Yes

Heated: Yes  
Finished: Yes  
Enclosed: Yes  
Contiguous: Yes  
Permitted: Yes  
Wet space: No  
Addition: No  
Conversion: No



## Home report

4819 Southwest Hamilton Street, Bridlemile, Portland,  
Multnomah County, Oregon, United States, 97221

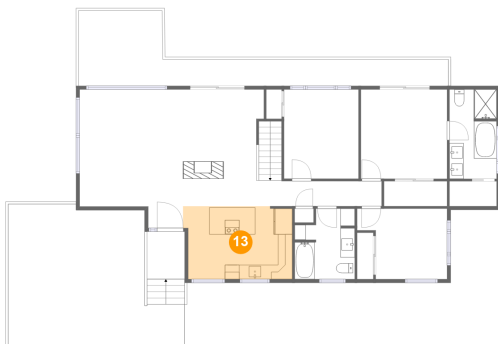
### 12 Floor 2 - Living Room



Dimensions: 14'4" x 19'2"  
Area: 247 sq. ft  
Counted as living area: Yes

Heated: Yes  
Finished: Yes  
Enclosed: Yes  
Contiguous: Yes  
Permitted: Yes  
Wet space: No  
Addition: No  
Conversion: No

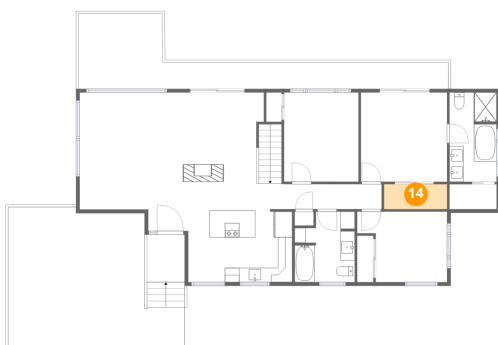
### 13 Floor 2 - Eat-in Kitchen



Dimensions: 15'2" x 10'1"  
Area: 147 sq. ft  
Counted as living area: Yes

Heated: Yes  
Finished: Yes  
Enclosed: Yes  
Contiguous: Yes  
Permitted: Yes  
Wet space: No  
Addition: No  
Conversion: No

### 14 Floor 2 - W.I.C.



Dimensions: 8'9" x 3'6"  
Area: 30 sq. ft  
Counted as living area: Yes

Heated: Yes  
Finished: Yes  
Enclosed: Yes  
Contiguous: Yes  
Permitted: Yes  
Wet space: No  
Addition: No  
Conversion: No

## Home report

4819 Southwest Hamilton Street, Bridlemile, Portland,  
Multnomah County, Oregon, United States, 97221

### 15 Floor 2 - Carport



Dimensions: 24'6" x 19'11"  
Area: 421 sq. ft  
Counted as living area: No

Heated: No  
Finished: Yes  
Enclosed: No  
Contiguous: Yes  
Permitted: Yes  
Wet space: No  
Addition: No  
Conversion: No

### 16 Floor 2 - Bath



Dimensions: 8'4" x 9'9"  
Area: 73 sq. ft  
Counted as living area: Yes

Heated: Yes  
Finished: Yes  
Enclosed: Yes  
Contiguous: Yes  
Permitted: Yes  
Wet space: Yes  
Addition: No  
Conversion: No

### 17 Floor 2 - Bedroom



Dimensions: 12'6" x 9'9"  
Area: 105 sq. ft  
Counted as living area: Yes

Heated: Yes  
Finished: Yes  
Enclosed: Yes  
Contiguous: Yes  
Permitted: Yes  
Wet space: No  
Addition: No  
Conversion: No

4819 Southwest Hamilton Street, Bridlemile, Portland,  
Multnomah County, Oregon, United States, 97221

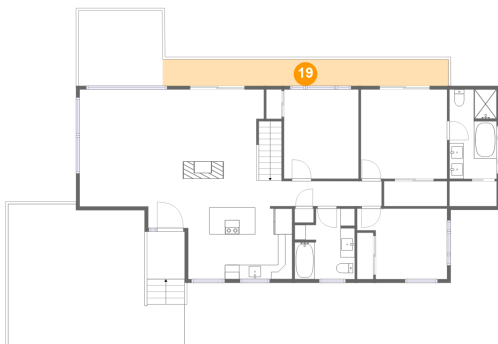
## 18 Floor 2 - Primary Bath



Dimensions: 6'10" x 12'4"  
Area: 81 sq. ft  
Counted as living area: Yes

Heated: Yes  
Finished: Yes  
Enclosed: Yes  
Contiguous: Yes  
Permitted: Yes  
Wet space: Yes  
Addition: No  
Conversion: No

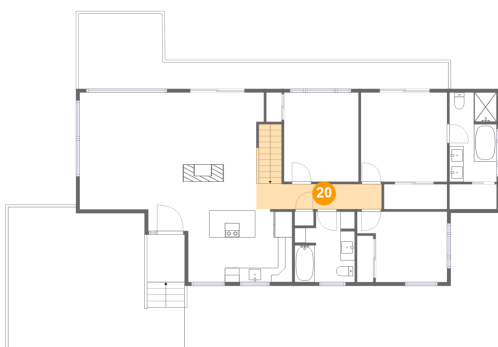
## 19 Floor 2 - Deck



Dimensions: 39'8" x 3'8"  
Area: 145 sq. ft  
Counted as living area: No

Heated: No  
Finished: Yes  
Enclosed: No  
Contiguous: Yes  
Permitted: Yes  
Wet space: No  
Addition: No  
Conversion: No

## 20 Floor 2 - Hall



Dimensions: 17'5" x 3'6"  
Area: 88 sq. ft  
Counted as living area: Yes

Heated: Yes  
Finished: Yes  
Enclosed: Yes  
Contiguous: Yes  
Permitted: Yes  
Wet space: No  
Addition: No  
Conversion: No