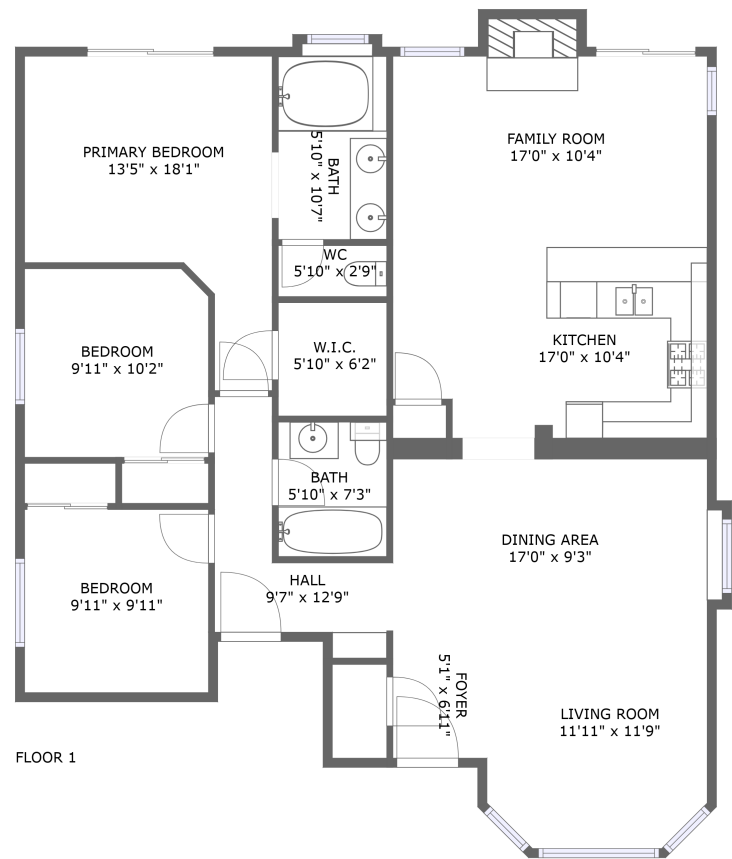




2521 Overland Avenue, Lancaster, Los Angeles
County, California, United States, 93536




Property summary




0
Garages




3
Bedrooms




2
Bathrooms




0
Half baths



1
Floors

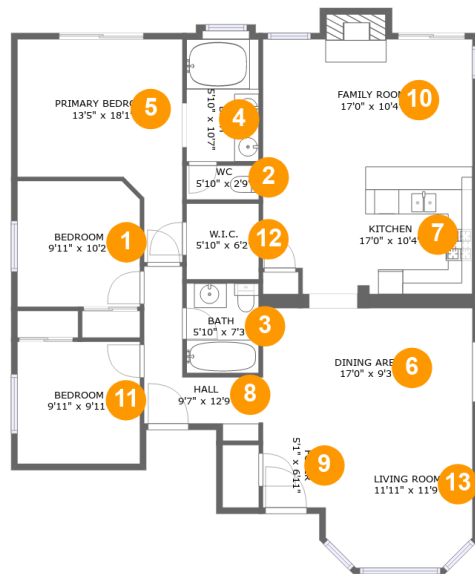


1,463
Gross living
area sqft



1,475
Total sqft

**2521 Overland Avenue, Lancaster, Los Angeles
County, California, United States, 93536**



Room dimensions

Floor 1

Total sqft: 1475 Living area: 1463

#		Dimensions	sqft	Counted as living area
1	Bedroom	9'11" x 10'2"	100 sq. ft	Yes
2	WC	5'10" x 2'9"	16 sq. ft	Yes
3	Bath	5'10" x 7'3"	43 sq. ft	Yes
4	Bath	5'10" x 10'7"	61 sq. ft	Yes
5	Primary Bedroom	13'5" x 18'1"	172 sq. ft	Yes
6	Dining Area	17'0" x 9'3"	162 sq. ft	Yes
7	Kitchen	17'0" x 10'4"	168 sq. ft	Yes
8	Hall	9'7" x 12'9"	68 sq. ft	Yes
9	Foyer	5'1" x 6'11"	35 sq. ft	Yes
10	Family Room	17'0" x 10'4"	186 sq. ft	Yes
11	Bedroom	9'11" x 9'11"	98 sq. ft	Yes

Scan captured on Tue, 28 Jan 2025 22:20:11 GMT

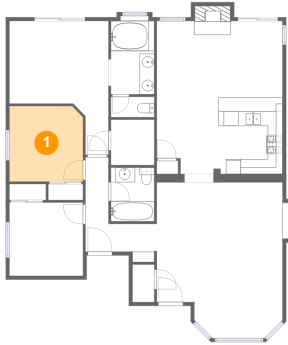
Information is calculated by Cubicasa technology deemed highly reliable but not guaranteed.

**2521 Overland Avenue, Lancaster, Los Angeles
County, California, United States, 93536**

#		Dimensions	sqft	Counted as living area
12	W.I.C.	5'10" x 6'2"	36 sq. ft	Yes
13	Living Room	11'11" x 11'9"	134 sq. ft	Yes

**2521 Overland Avenue, Lancaster, Los Angeles
County, California, United States, 93536**

1 Floor 1 - Bedroom



Dimensions: 9'11" x 10'2"
Area: 100 sq. ft
Counted as living area: Yes

Heated: Yes
Finished: Yes
Enclosed: Yes
Contiguous: Yes
Permitted: Yes
Wet space: No
Addition: No
Conversion: No

2 Floor 1 - WC

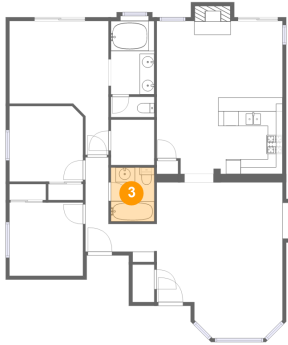


Dimensions: 5'10" x 2'9"
Area: 16 sq. ft
Counted as living area: Yes

Heated: Yes
Finished: Yes
Enclosed: Yes
Contiguous: Yes
Permitted: Yes
Wet space: Yes
Addition: No
Conversion: No

2521 Overland Avenue, Lancaster, Los Angeles
County, California, United States, 93536

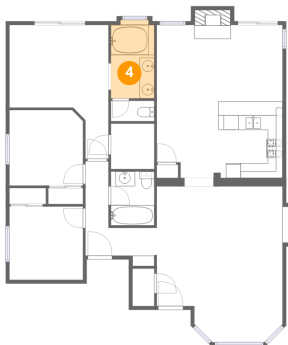
3 Floor 1 - Bath



Dimensions: 5'10" x 7'3"
Area: 43 sq. ft
Counted as living area: Yes

Heated: Yes
Finished: Yes
Enclosed: Yes
Contiguous: Yes
Permitted: Yes
Wet space: Yes
Addition: No
Conversion: No

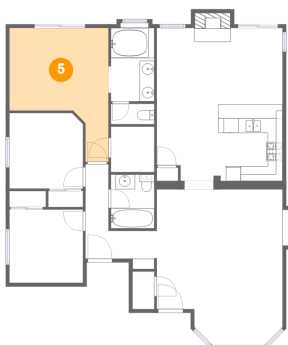
4 Floor 1 - Bath



Dimensions: 5'10" x 10'7"
Area: 61 sq. ft
Counted as living area: Yes

Heated: Yes
Finished: Yes
Enclosed: Yes
Contiguous: Yes
Permitted: Yes
Wet space: Yes
Addition: No
Conversion: No

5 Floor 1 - Primary Bedroom

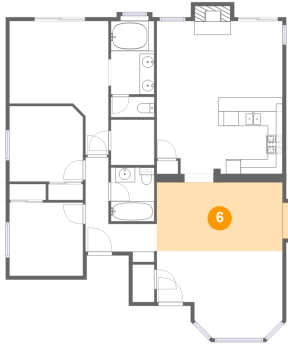


Dimensions: 13'5" x 18'1"
Area: 172 sq. ft
Counted as living area: Yes

Heated: Yes
Finished: Yes
Enclosed: Yes
Contiguous: Yes
Permitted: Yes
Wet space: No
Addition: No
Conversion: No

2521 Overland Avenue, Lancaster, Los Angeles
County, California, United States, 93536

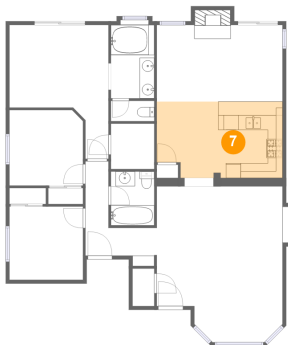
6 Floor 1 - Dining Area



Dimensions: 17'0" x 9'3"
Area: 162 sq. ft
Counted as living area: Yes

Heated: Yes
Finished: Yes
Enclosed: Yes
Contiguous: Yes
Permitted: Yes
Wet space: No
Addition: No
Conversion: No

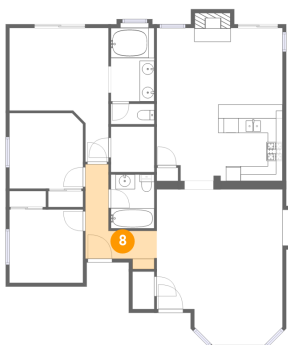
7 Floor 1 - Kitchen



Dimensions: 17'0" x 10'4"
Area: 168 sq. ft
Counted as living area: Yes

Heated: Yes
Finished: Yes
Enclosed: Yes
Contiguous: Yes
Permitted: Yes
Wet space: No
Addition: No
Conversion: No

8 Floor 1 - Hall

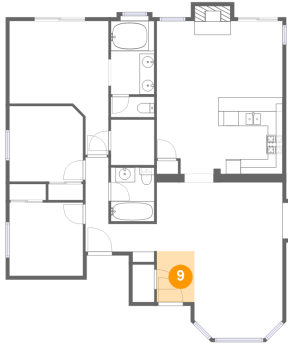


Dimensions: 9'7" x 12'9"
Area: 68 sq. ft
Counted as living area: Yes

Heated: Yes
Finished: Yes
Enclosed: Yes
Contiguous: Yes
Permitted: Yes
Wet space: No
Addition: No
Conversion: No

2521 Overland Avenue, Lancaster, Los Angeles
County, California, United States, 93536

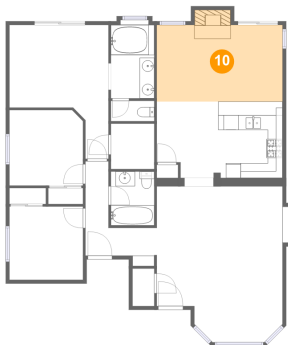
9 Floor 1 - Foyer



Dimensions: 5'1" x 6'11"
Area: 35 sq. ft
Counted as living area: Yes

Heated: Yes
Finished: Yes
Enclosed: Yes
Contiguous: Yes
Permitted: Yes
Wet space: No
Addition: No
Conversion: No

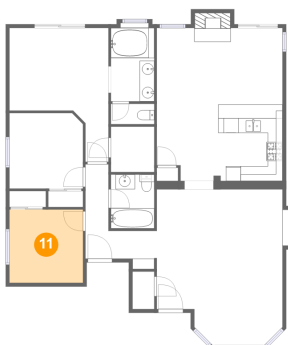
10 Floor 1 - Family Room



Dimensions: 17'0" x 10'4"
Area: 186 sq. ft
Counted as living area: Yes

Heated: Yes
Finished: Yes
Enclosed: Yes
Contiguous: Yes
Permitted: Yes
Wet space: No
Addition: No
Conversion: No

11 Floor 1 - Bedroom

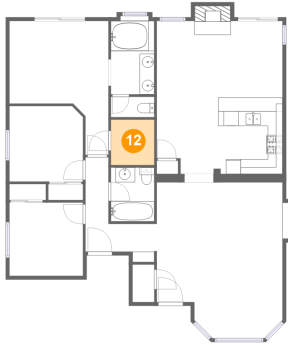


Dimensions: 9'11" x 9'11"
Area: 98 sq. ft
Counted as living area: Yes

Heated: Yes
Finished: Yes
Enclosed: Yes
Contiguous: Yes
Permitted: Yes
Wet space: No
Addition: No
Conversion: No

**2521 Overland Avenue, Lancaster, Los Angeles
County, California, United States, 93536**

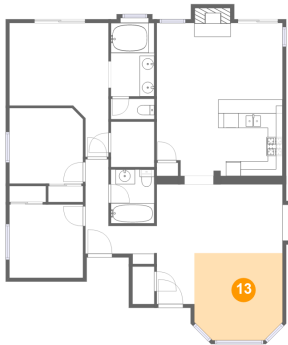
12 Floor 1 - W.I.C.



Dimensions: 5'10" x 6'2"
Area: 36 sq. ft
Counted as living area: Yes

Heated: Yes
Finished: Yes
Enclosed: Yes
Contiguous: Yes
Permitted: Yes
Wet space: No
Addition: No
Conversion: No

13 Floor 1 - Living Room



Dimensions: 11'11" x 11'9"
Area: 134 sq. ft
Counted as living area: Yes

Heated: Yes
Finished: Yes
Enclosed: Yes
Contiguous: Yes
Permitted: Yes
Wet space: No
Addition: No
Conversion: No