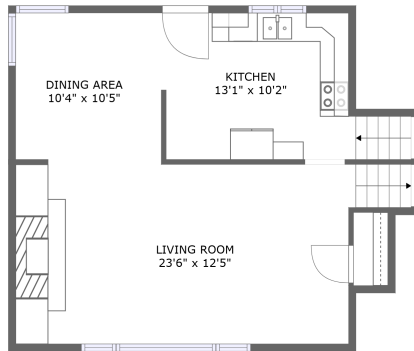
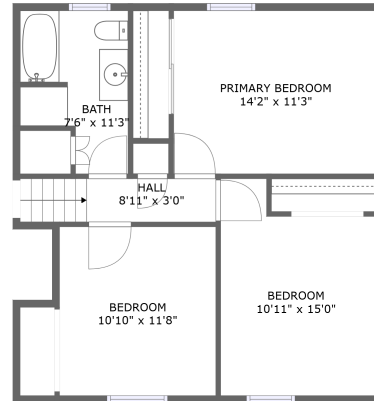


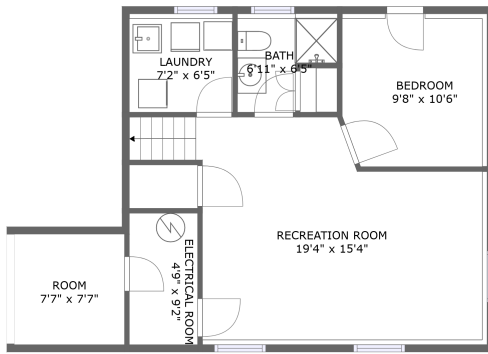
849 Tulip Lane, Naperville, DuPage County, Illinois, United States, 60540



FLOOR 2




FLOOR 3



FLOOR 1

Property summary


 **0** Garages

 **4** Bedrooms

 **2** Bathrooms

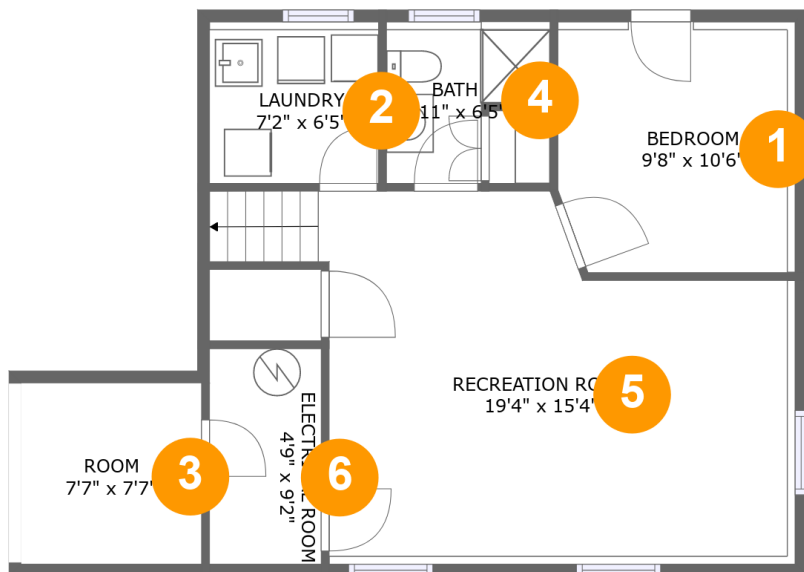
 **0** Half baths

 **3** Floors

 **1,884** Gross living area sqft

 **2,003** Total sqft

849 Tulip Lane, Naperville, DuPage County, Illinois, United States, 60540



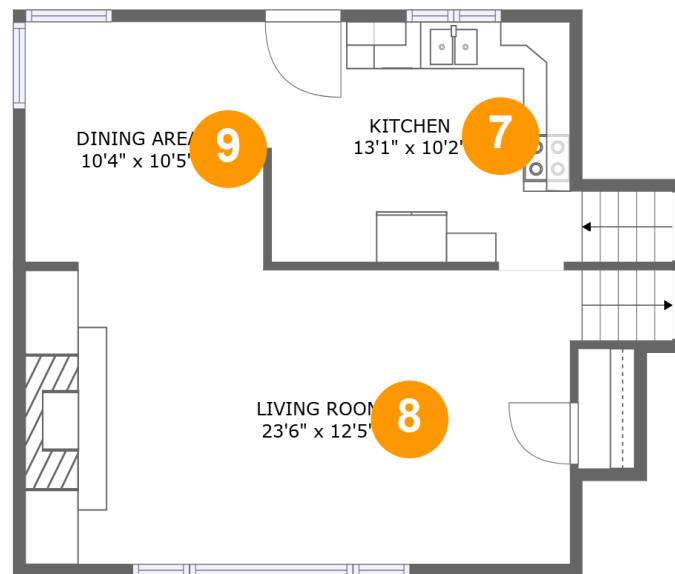
Room dimensions

Floor 1

Total sqft: 684 Living area: 565

#		Dimensions	sqft	Counted as living area
1	Bedroom	9'8" x 10'6"	104 sq. ft	Yes
2	Laundry	7'2" x 6'5"	49 sq. ft	Yes
3	Room	7'7" x 7'7"	58 sq. ft	No
4	Bath	6'11" x 6'5"	37 sq. ft	Yes
5	Recreation Room	19'4" x 15'4"	289 sq. ft	Yes
6	Electrical Room	4'9" x 9'2"	44 sq. ft	No

**849 Tulip Lane, Naperville, DuPage County, Illinois,
United States, 60540**



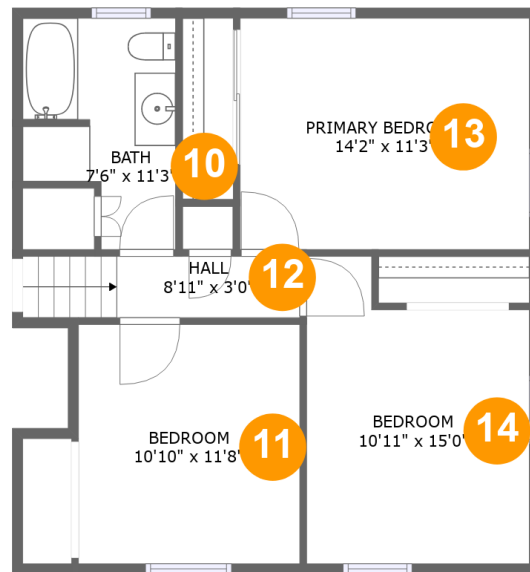
Room dimensions

Floor 2

Total sqft: 621 Living area: 621

#		Dimensions	sqft	Counted as living area
7	Kitchen	13'1" x 10'2"	141 sq. ft	Yes
8	Living Room	23'6" x 12'5"	299 sq. ft	Yes
9	Dining Area	10'4" x 10'5"	107 sq. ft	Yes

**849 Tulip Lane, Naperville, DuPage County, Illinois,
United States, 60540**



Room dimensions

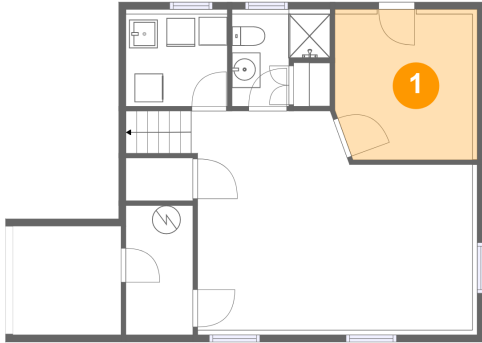
Floor 3

Total sqft: 698 Living area: 698

#		Dimensions	sqft	Counted as living area
10	Bath	7'6" x 11'3"	70 sq. ft	Yes
11	Bedroom	10'10" x 11'8"	126 sq. ft	Yes
12	Hall	8'11" x 3'0"	41 sq. ft	Yes
13	Primary Bedroom	14'2" x 11'3"	159 sq. ft	Yes
14	Bedroom	10'11" x 15'0"	143 sq. ft	Yes

**849 Tulip Lane, Naperville, DuPage County, Illinois,
United States, 60540**

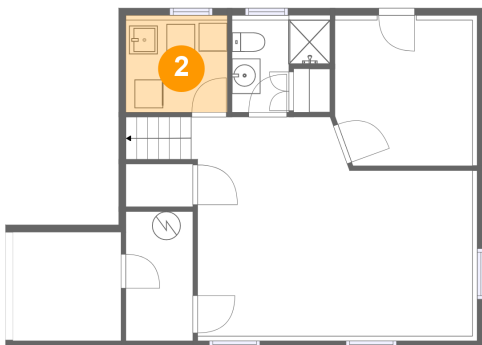
1 Floor 1 - Bedroom



Dimensions: 9'8" x 10'6"
Area: 104 sq. ft
Counted as living area: Yes

Heated: Yes
Finished: Yes
Enclosed: Yes
Contiguous: Yes
Permitted: Yes
Wet space: No
Addition: No
Conversion: No

2 Floor 1 - Laundry

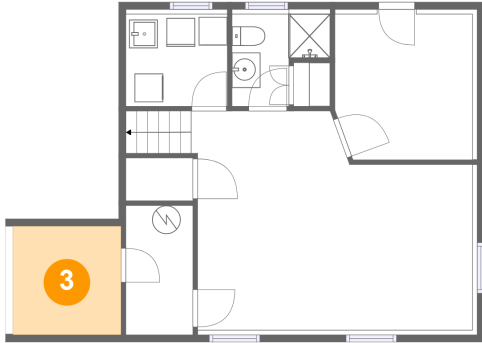


Dimensions: 7'2" x 6'5"
Area: 49 sq. ft
Counted as living area: Yes

Heated: Yes
Finished: Yes
Enclosed: Yes
Contiguous: Yes
Permitted: Yes
Wet space: No
Addition: No
Conversion: No

849 Tulip Lane, Naperville, DuPage County, Illinois,
United States, 60540

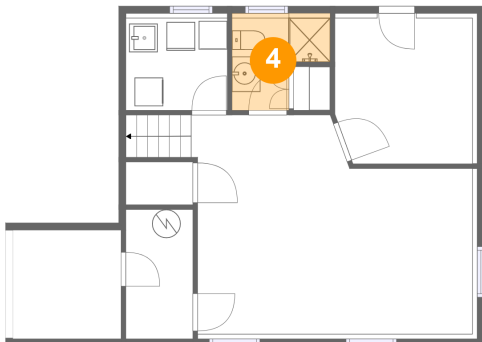
3 Floor 1 - Room



Dimensions: 7'7" x 7'7"
Area: 58 sq. ft
Counted as living area: No

Heated: Yes
Finished: No
Enclosed: Yes
Contiguous: Yes
Permitted: Yes
Wet space: No
Addition: No
Conversion: No

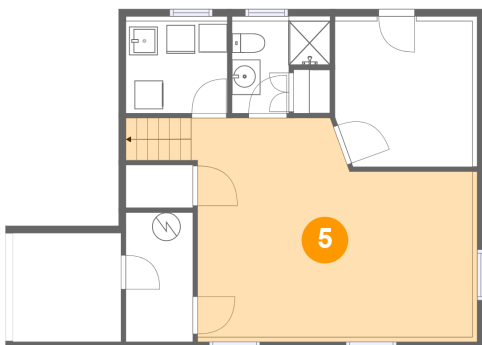
4 Floor 1 - Bath



Dimensions: 6'11" x 6'5"
Area: 37 sq. ft
Counted as living area: Yes

Heated: Yes
Finished: Yes
Enclosed: Yes
Contiguous: Yes
Permitted: Yes
Wet space: Yes
Addition: No
Conversion: No

5 Floor 1 - Recreation Room

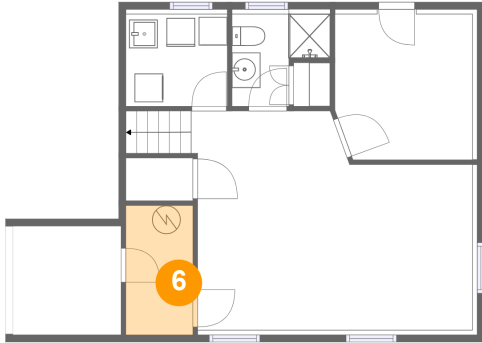


Dimensions: 19'4" x 15'4"
Area: 289 sq. ft
Counted as living area: Yes

Heated: Yes
Finished: Yes
Enclosed: Yes
Contiguous: Yes
Permitted: Yes
Wet space: No
Addition: No
Conversion: No

849 Tulip Lane, Naperville, DuPage County, Illinois, United States, 60540

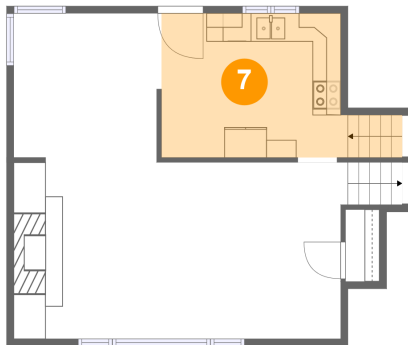
6 Floor 1 - Electrical Room



Dimensions: 4'9" x 9'2"
Area: 44 sq. ft
Counted as living area: No

Heated: No
Finished: No
Enclosed: Yes
Contiguous: Yes
Permitted: Yes
Wet space: No
Addition: No
Conversion: No

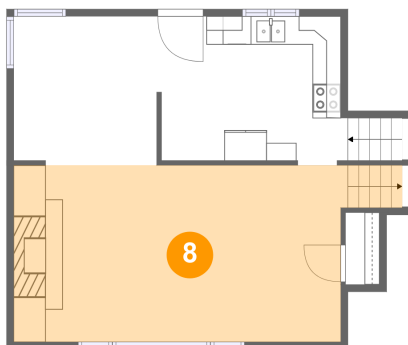
7 Floor 2 - Kitchen



Dimensions: 13'1" x 10'2"
Area: 141 sq. ft
Counted as living area: Yes

Heated: Yes
Finished: Yes
Enclosed: Yes
Contiguous: Yes
Permitted: Yes
Wet space: No
Addition: No
Conversion: No

8 Floor 2 - Living Room

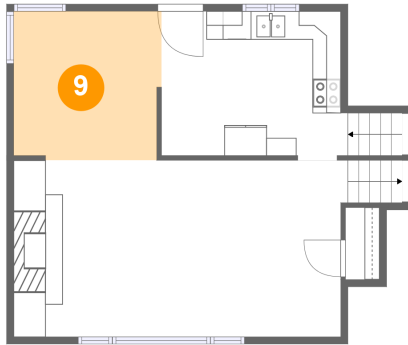


Dimensions: 23'6" x 12'5"
Area: 299 sq. ft
Counted as living area: Yes

Heated: Yes
Finished: Yes
Enclosed: Yes
Contiguous: Yes
Permitted: Yes
Wet space: No
Addition: No
Conversion: No

849 Tulip Lane, Naperville, DuPage County, Illinois,
United States, 60540

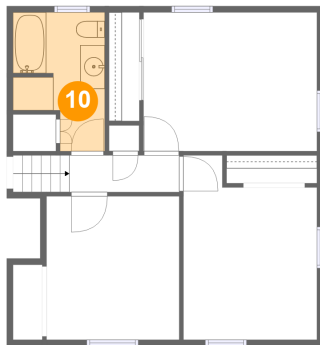
9 Floor 2 - Dining Area



Dimensions: 10'4" x 10'5"
Area: 107 sq. ft
Counted as living area: Yes

Heated: Yes
Finished: Yes
Enclosed: Yes
Contiguous: Yes
Permitted: Yes
Wet space: No
Addition: No
Conversion: No

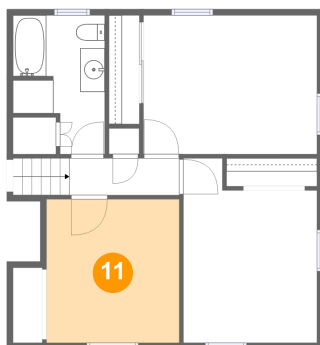
10 Floor 3 - Bath



Dimensions: 7'6" x 11'3"
Area: 70 sq. ft
Counted as living area: Yes

Heated: Yes
Finished: Yes
Enclosed: Yes
Contiguous: Yes
Permitted: Yes
Wet space: Yes
Addition: No
Conversion: No

11 Floor 3 - Bedroom

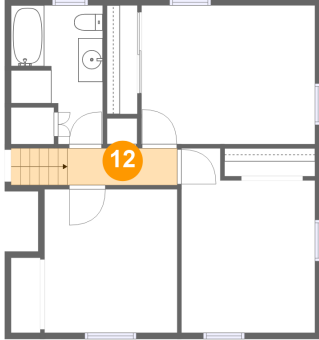


Dimensions: 10'10" x 11'8"
Area: 126 sq. ft
Counted as living area: Yes

Heated: Yes
Finished: Yes
Enclosed: Yes
Contiguous: Yes
Permitted: Yes
Wet space: No
Addition: No
Conversion: No

849 Tulip Lane, Naperville, DuPage County, Illinois,
United States, 60540

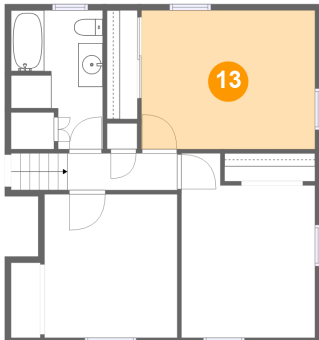
12 Floor 3 - Hall



Dimensions: 8'11" x 3'0"
Area: 41 sq. ft
Counted as living area: Yes

Heated: Yes
Finished: Yes
Enclosed: Yes
Contiguous: Yes
Permitted: Yes
Wet space: No
Addition: No
Conversion: No

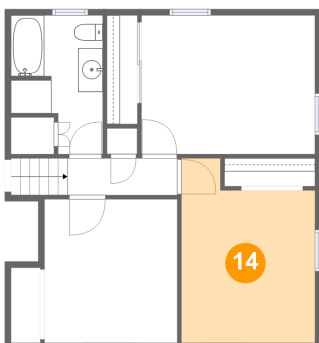
13 Floor 3 - Primary Bedroom



Dimensions: 14'2" x 11'3"
Area: 159 sq. ft
Counted as living area: Yes

Heated: Yes
Finished: Yes
Enclosed: Yes
Contiguous: Yes
Permitted: Yes
Wet space: No
Addition: No
Conversion: No

14 Floor 3 - Bedroom



Dimensions: 10'11" x 15'0"
Area: 143 sq. ft
Counted as living area: Yes

Heated: Yes
Finished: Yes
Enclosed: Yes
Contiguous: Yes
Permitted: Yes
Wet space: No
Addition: No
Conversion: No