


Home report

6226 Monet Drive, Roanoke, Roanoke County, Virginia, United States, 24018



Property summary

 **1** Garages

 **4** Bedrooms

 **2** Bathrooms

 **1** Half baths

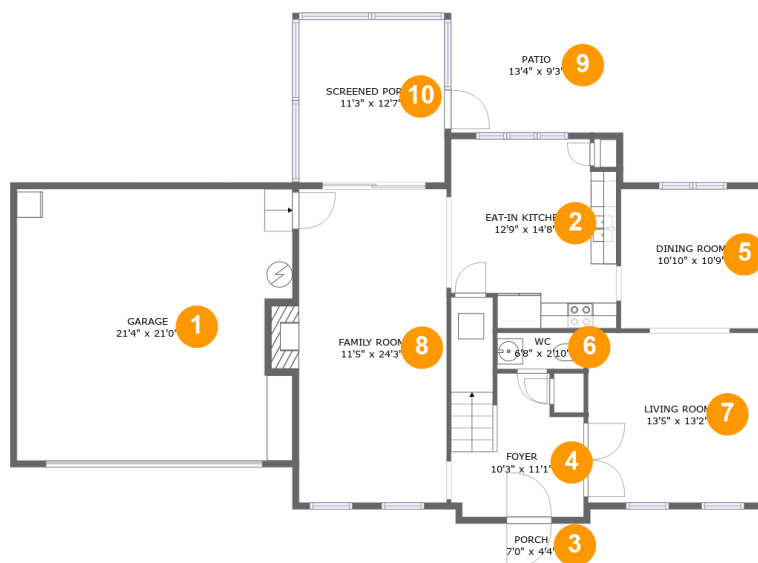
 **2** Floors

 **1,980** Gross living area sqft

 **2,772** Total sqft

Home report

6226 Monet Drive, Roanoke, Roanoke County, Virginia, United States, 24018



Room dimensions

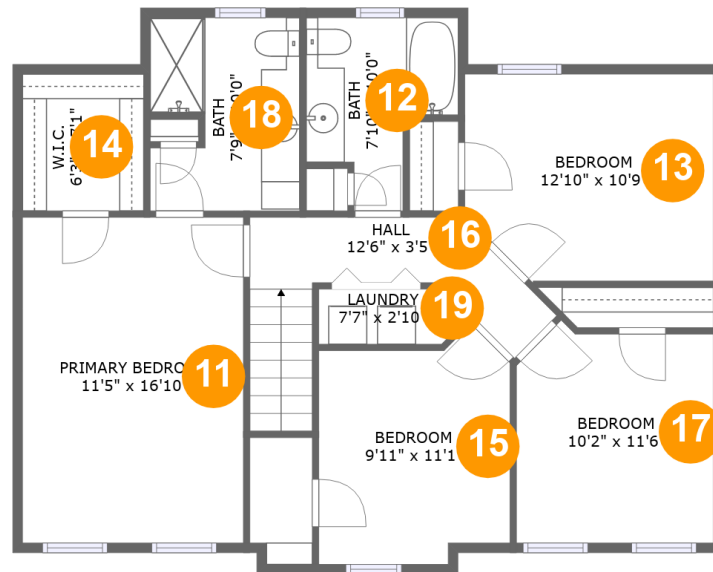
Floor 1

Total sqft: 1784 Living area: 992

#		Dimensions	sqft	Counted as living area
1	Garage	21'4" x 21'0"	435 sq. ft	No
2	Eat-in Kitchen	12'9" x 14'8"	172 sq. ft	Yes
3	Porch	7'0" x 4'4"	30 sq. ft	No
4	Foyer	10'3" x 11'1"	122 sq. ft	Yes
5	Dining Room	10'10" x 10'9"	117 sq. ft	Yes
6	WC	6'8" x 2'10"	19 sq. ft	Yes
7	Living Room	13'5" x 13'2"	176 sq. ft	Yes
8	Family Room	11'5" x 24'3"	288 sq. ft	Yes
9	Patio	13'4" x 9'3"	123 sq. ft	No
10	Screened Porch	11'3" x 12'7"	142 sq. ft	No

Home report

6226 Monet Drive, Roanoke, Roanoke County, Virginia, United States, 24018



Room dimensions

Floor 2

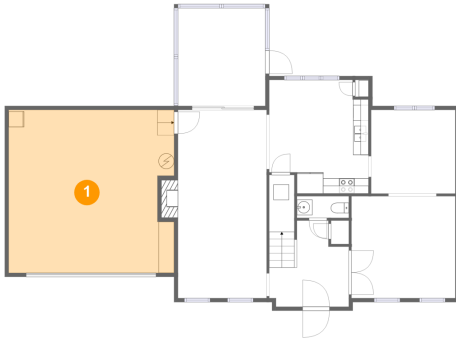
Total sqft: 988

Living area: 988

#		Dimensions	sqft	Counted as living area
11	Primary Bedroom	11'5" x 16'10"	192 sq. ft	Yes
12	Bath	7'10" x 10'0"	58 sq. ft	Yes
13	Bedroom	12'10" x 10'9"	132 sq. ft	Yes
14	W.I.C.	6'3" x 7'1"	44 sq. ft	Yes
15	Bedroom	9'11" x 11'1"	108 sq. ft	Yes
16	Hall	12'6" x 3'5"	79 sq. ft	Yes
17	Bedroom	10'2" x 11'6"	109 sq. ft	Yes
18	Bath	7'9" x 10'0"	72 sq. ft	Yes
19	Laundry	7'7" x 2'10"	20 sq. ft	Yes

6226 Monet Drive, Roanoke, Roanoke County, Virginia, United States, 24018

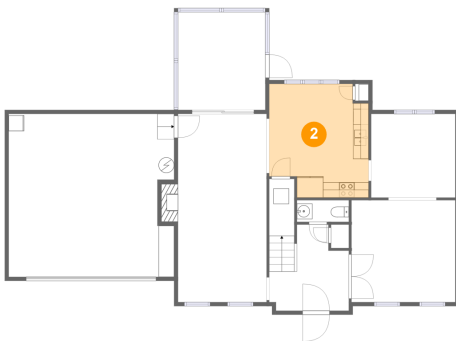
1 Floor 1 - Garage



Dimensions: 21'4" x 21'0"
Area: 435 sq. ft
Counted as living area: No

Heated: No
Finished: No
Enclosed: Yes
Contiguous: Yes
Permitted: Yes
Wet space: No
Addition: No
Conversion: No

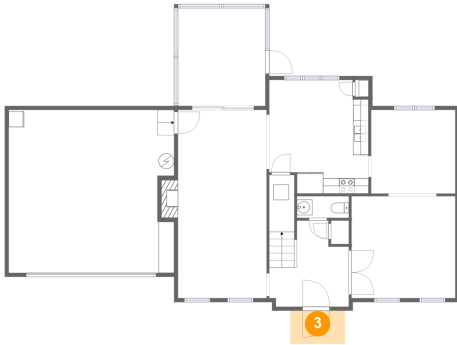
2 Floor 1 - Eat-in Kitchen



Dimensions: 12'9" x 14'8"
Area: 172 sq. ft
Counted as living area: Yes

Heated: Yes
Finished: Yes
Enclosed: Yes
Contiguous: Yes
Permitted: Yes
Wet space: No
Addition: No
Conversion: No

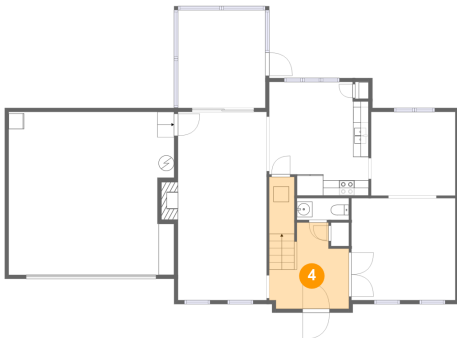
3 Floor 1 - Porch



Dimensions: 7'0" x 4'4"
Area: 30 sq. ft
Counted as living area: No

Heated: No
Finished: Yes
Enclosed: No
Contiguous: Yes
Permitted: Yes
Wet space: No
Addition: No
Conversion: No

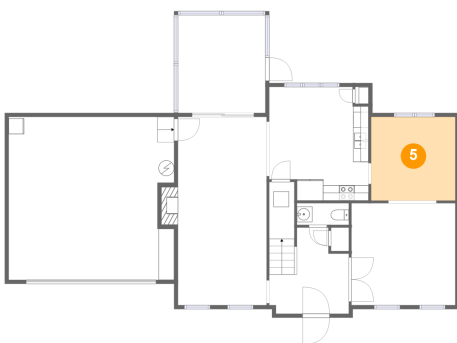
4 Floor 1 - Foyer



Dimensions: 10'3" x 11'1"
Area: 122 sq. ft
Counted as living area: Yes

Heated: Yes
Finished: Yes
Enclosed: Yes
Contiguous: Yes
Permitted: Yes
Wet space: No
Addition: No
Conversion: No

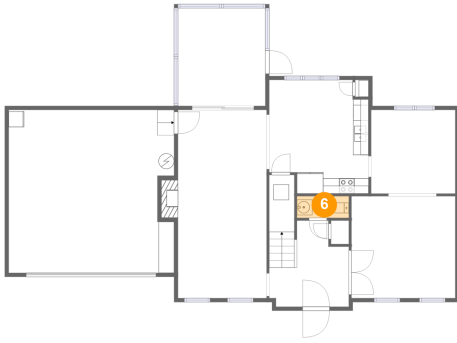
5 Floor 1 - Dining Room



Dimensions: 10'10" x 10'9"
Area: 117 sq. ft
Counted as living area: Yes

Heated: Yes
Finished: Yes
Enclosed: Yes
Contiguous: Yes
Permitted: Yes
Wet space: No
Addition: No
Conversion: No

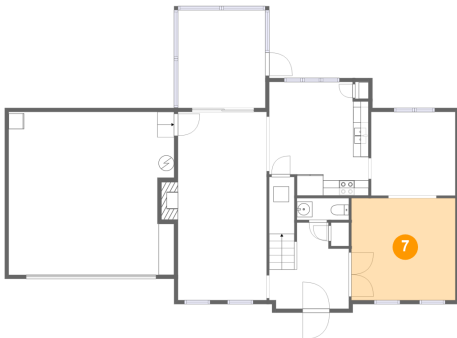
6 Floor 1 - WC



Dimensions: 6'8" x 2'10"
Area: 19 sq. ft
Counted as living area: Yes

Heated: Yes
Finished: Yes
Enclosed: Yes
Contiguous: Yes
Permitted: Yes
Wet space: Yes
Addition: No
Conversion: No

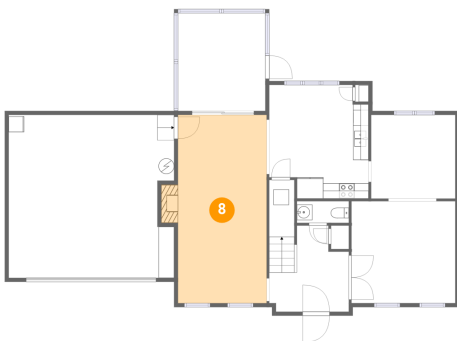
7 Floor 1 - Living Room



Dimensions: 13'5" x 13'2"
Area: 176 sq. ft
Counted as living area: Yes

Heated: Yes
Finished: Yes
Enclosed: Yes
Contiguous: Yes
Permitted: Yes
Wet space: No
Addition: No
Conversion: No

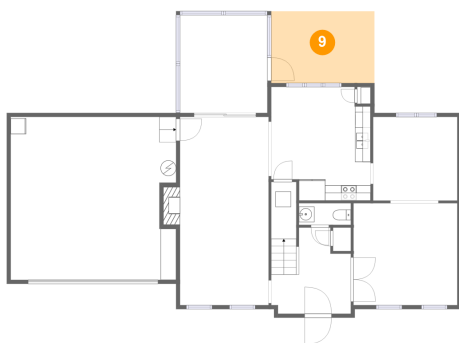
8 Floor 1 - Family Room



Dimensions: 11'5" x 24'3"
Area: 288 sq. ft
Counted as living area: Yes

Heated: Yes
Finished: Yes
Enclosed: Yes
Contiguous: Yes
Permitted: Yes
Wet space: No
Addition: No
Conversion: No

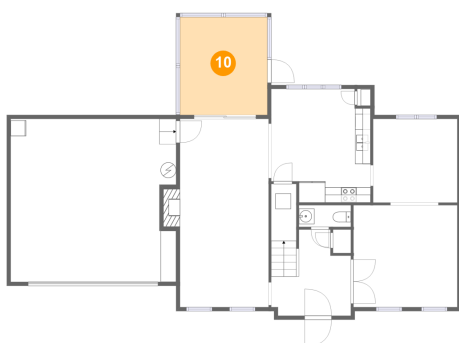
9 Floor 1 - Patio



Dimensions: 13'4" x 9'3"
Area: 123 sq. ft
Counted as living area: No

Heated: No
Finished: Yes
Enclosed: No
Contiguous: Yes
Permitted: Yes
Wet space: No
Addition: No
Conversion: No

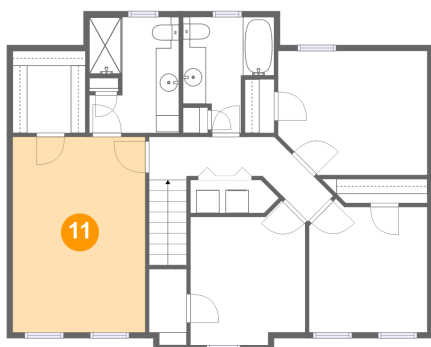
10 Floor 1 - Screened Porch



Dimensions: 11'3" x 12'7"
Area: 142 sq. ft
Counted as living area: No

Heated: No
Finished: Yes
Enclosed: No
Contiguous: Yes
Permitted: Yes
Wet space: No
Addition: No
Conversion: No

11 Floor 2 - Primary Bedroom

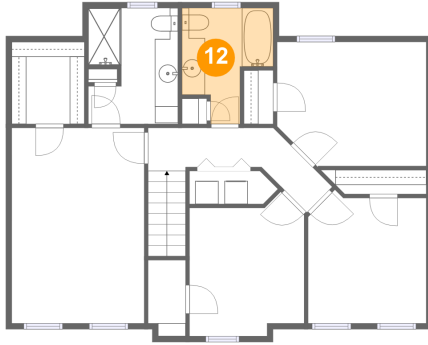


Dimensions: 11'5" x 16'10"
Area: 192 sq. ft
Counted as living area: Yes

Heated: Yes
Finished: Yes
Enclosed: Yes
Contiguous: Yes
Permitted: Yes
Wet space: No
Addition: No
Conversion: No

6226 Monet Drive, Roanoke, Roanoke County, Virginia, United States, 24018

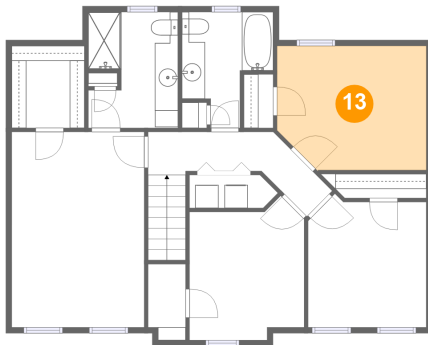
12 Floor 2 - Bath



Dimensions: 7'10" x 10'0"
Area: 58 sq. ft
Counted as living area: Yes

Heated: Yes
Finished: Yes
Enclosed: Yes
Contiguous: Yes
Permitted: Yes
Wet space: Yes
Addition: No
Conversion: No

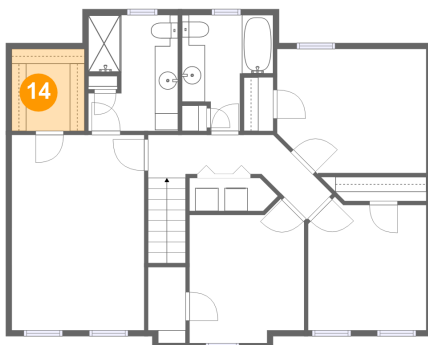
13 Floor 2 - Bedroom



Dimensions: 12'10" x 10'9"
Area: 132 sq. ft
Counted as living area: Yes

Heated: Yes
Finished: Yes
Enclosed: Yes
Contiguous: Yes
Permitted: Yes
Wet space: No
Addition: No
Conversion: No

14 Floor 2 - W.I.C.

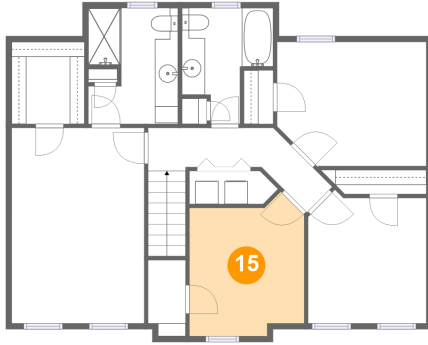


Dimensions: 6'3" x 7'1"
Area: 44 sq. ft
Counted as living area: Yes

Heated: Yes
Finished: Yes
Enclosed: Yes
Contiguous: Yes
Permitted: Yes
Wet space: No
Addition: No
Conversion: No

6226 Monet Drive, Roanoke, Roanoke County, Virginia, United States, 24018

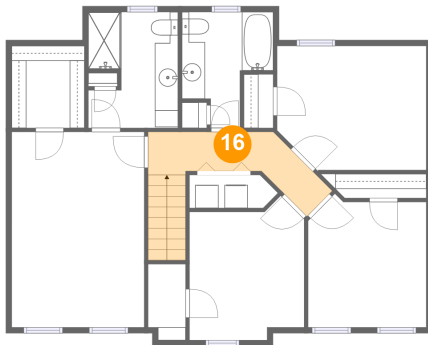
15 Floor 2 - Bedroom



Dimensions: 9'11" x 11'1"
Area: 108 sq. ft
Counted as living area: Yes

Heated: Yes
Finished: Yes
Enclosed: Yes
Contiguous: Yes
Permitted: Yes
Wet space: No
Addition: No
Conversion: No

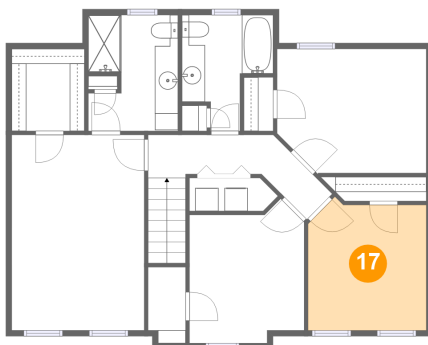
16 Floor 2 - Hall



Dimensions: 12'6" x 3'5"
Area: 79 sq. ft
Counted as living area: Yes

Heated: Yes
Finished: Yes
Enclosed: Yes
Contiguous: Yes
Permitted: Yes
Wet space: No
Addition: No
Conversion: No

17 Floor 2 - Bedroom

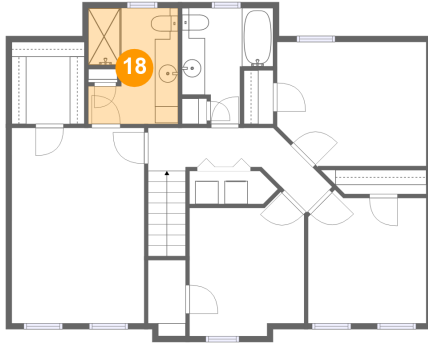


Dimensions: 10'2" x 11'6"
Area: 109 sq. ft
Counted as living area: Yes

Heated: Yes
Finished: Yes
Enclosed: Yes
Contiguous: Yes
Permitted: Yes
Wet space: No
Addition: No
Conversion: No

6226 Monet Drive, Roanoke, Roanoke County, Virginia, United States, 24018

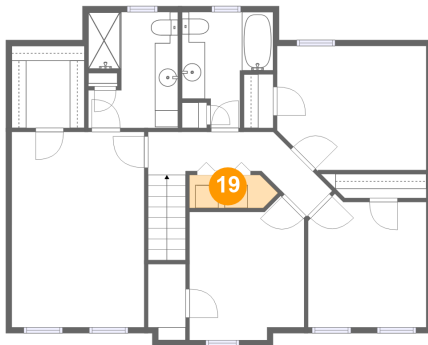
18 Floor 2 - Bath



Dimensions: 7'9" x 10'0"
Area: 72 sq. ft
Counted as living area: Yes

Heated: Yes
Finished: Yes
Enclosed: Yes
Contiguous: Yes
Permitted: Yes
Wet space: Yes
Addition: No
Conversion: No

19 Floor 2 - Laundry



Dimensions: 7'7" x 2'10"
Area: 20 sq. ft
Counted as living area: Yes

Heated: Yes
Finished: Yes
Enclosed: Yes
Contiguous: Yes
Permitted: Yes
Wet space: No
Addition: No
Conversion: No