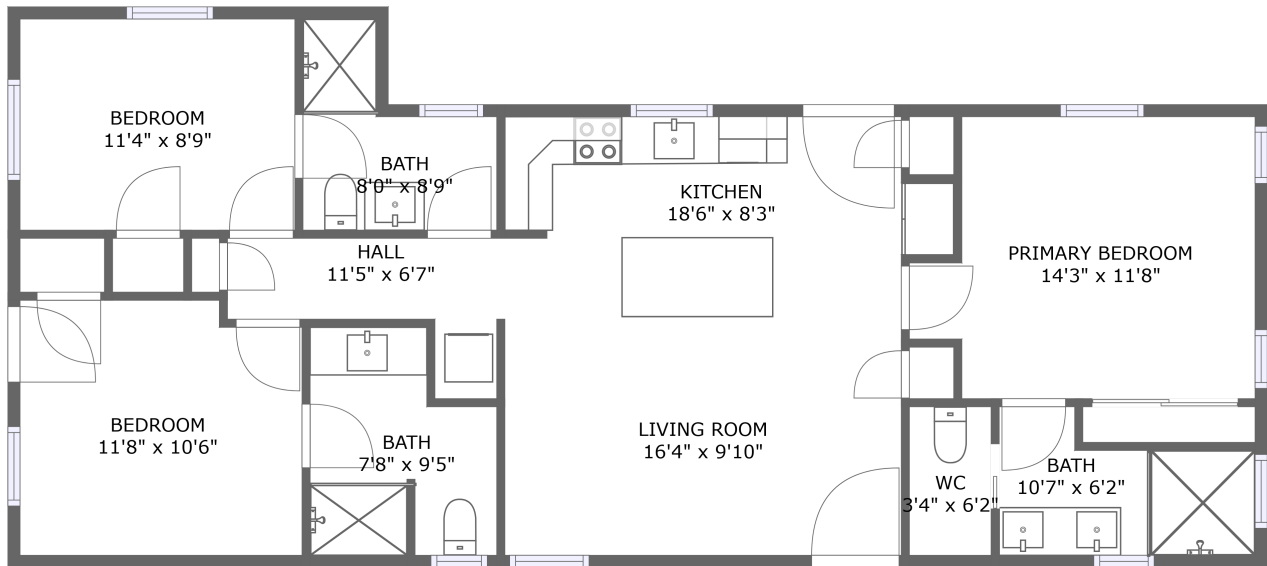


Home report


**1530 Peachy Canyon Road, Paso Robles, San Luis Obispo
County, California, United States, 93446**




FLOOR 1

Property summary

 **0** Garages

 **3** Bedrooms

 **3** Bathrooms

 **0** Half baths

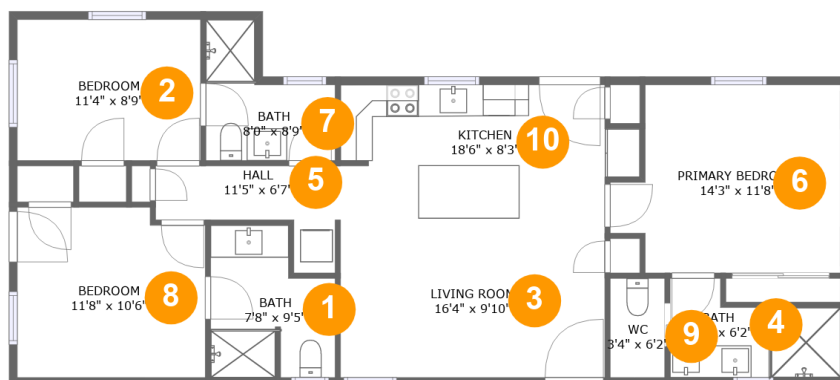
 **1** Floors

 **1,057**
Gross living
area sqft

 **1,057**
Total sqft

Home report

1530 Peachy Canyon Road, Paso Robles, San Luis Obispo County, California, United States, 93446



Room dimensions

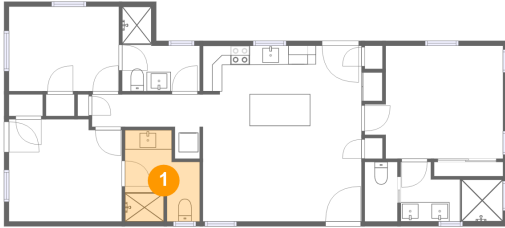
Floor 1

Total sqft: 1057 Living area: 1057

#		Dimensions	sqft	Counted as living area
1	Bath	7'8" x 9'5"	62 sq. ft	Yes
2	Bedroom	11'4" x 8'9"	99 sq. ft	Yes
3	Living Room	16'4" x 9'10"	161 sq. ft	Yes
4	Bath	10'7" x 6'2"	51 sq. ft	Yes
5	Hall	11'5" x 6'7"	47 sq. ft	Yes
6	Primary Bedroom	14'3" x 11'8"	148 sq. ft	Yes
7	Bath	8'0" x 8'9"	50 sq. ft	Yes
8	Bedroom	11'8" x 10'6"	119 sq. ft	Yes
9	WC	3'4" x 6'2"	21 sq. ft	Yes
10	Kitchen	18'6" x 8'3"	141 sq. ft	Yes

1530 Peachy Canyon Road, Paso Robles, San Luis Obispo
County, California, United States, 93446

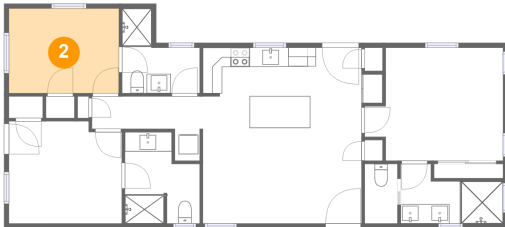
1 Floor 1 - Bath



Dimensions: 7'8" x 9'5"
Area: 62 sq. ft
Counted as living area: Yes

Heated: Yes
Finished: Yes
Enclosed: Yes
Contiguous: Yes
Permitted: Yes
Wet space: Yes
Addition: No
Conversion: No

2 Floor 1 - Bedroom

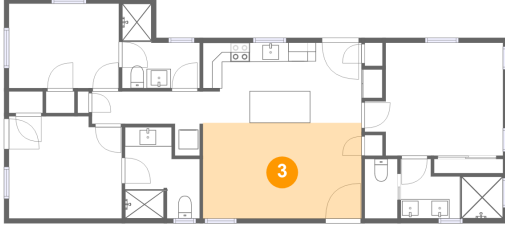


Dimensions: 11'4" x 8'9"
Area: 99 sq. ft
Counted as living area: Yes

Heated: Yes
Finished: Yes
Enclosed: Yes
Contiguous: Yes
Permitted: Yes
Wet space: No
Addition: No
Conversion: No

1530 Peachy Canyon Road, Paso Robles, San Luis Obispo
County, California, United States, 93446

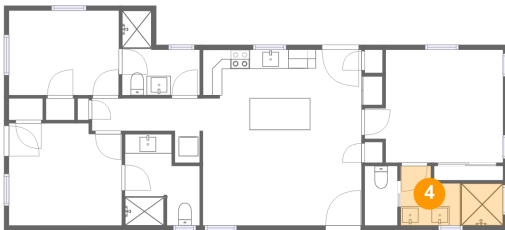
3 Floor 1 - Living Room



Dimensions: 16'4" x 9'10"
Area: 161 sq. ft
Counted as living area: Yes

Heated: Yes
Finished: Yes
Enclosed: Yes
Contiguous: Yes
Permitted: Yes
Wet space: No
Addition: No
Conversion: No

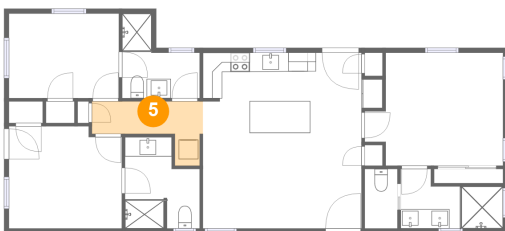
4 Floor 1 - Bath



Dimensions: 10'7" x 6'2"
Area: 51 sq. ft
Counted as living area: Yes

Heated: Yes
Finished: Yes
Enclosed: Yes
Contiguous: Yes
Permitted: Yes
Wet space: Yes
Addition: No
Conversion: No

5 Floor 1 - Hall

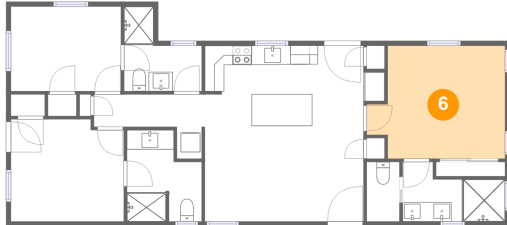


Dimensions: 11'5" x 6'7"
Area: 47 sq. ft
Counted as living area: Yes

Heated: Yes
Finished: Yes
Enclosed: Yes
Contiguous: Yes
Permitted: Yes
Wet space: No
Addition: No
Conversion: No

1530 Peachy Canyon Road, Paso Robles, San Luis Obispo
County, California, United States, 93446

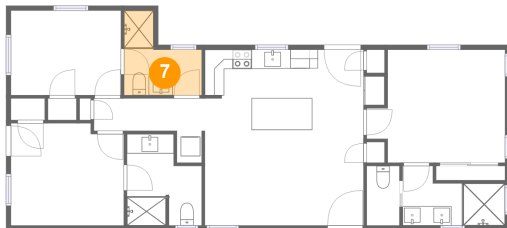
6 Floor 1 - Primary Bedroom



Dimensions: 14'3" x 11'8"
Area: 148 sq. ft
Counted as living area: Yes

Heated: Yes
Finished: Yes
Enclosed: Yes
Contiguous: Yes
Permitted: Yes
Wet space: No
Addition: No
Conversion: No

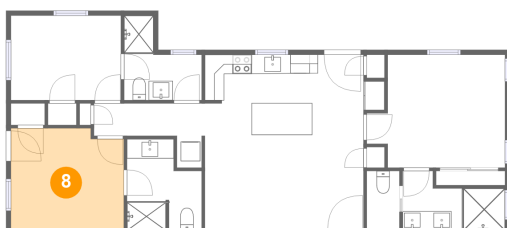
7 Floor 1 - Bath



Dimensions: 8'0" x 8'9"
Area: 50 sq. ft
Counted as living area: Yes

Heated: Yes
Finished: Yes
Enclosed: Yes
Contiguous: Yes
Permitted: Yes
Wet space: Yes
Addition: No
Conversion: No

8 Floor 1 - Bedroom

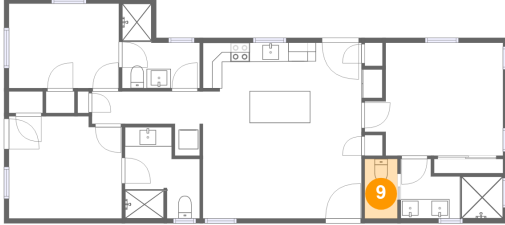


Dimensions: 11'8" x 10'6"
Area: 119 sq. ft
Counted as living area: Yes

Heated: Yes
Finished: Yes
Enclosed: Yes
Contiguous: Yes
Permitted: Yes
Wet space: No
Addition: No
Conversion: No

1530 Peachy Canyon Road, Paso Robles, San Luis Obispo
County, California, United States, 93446

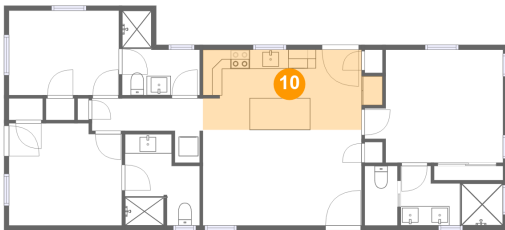
9 Floor 1 - WC



Dimensions: 3'4" x 6'2"
Area: 21 sq. ft
Counted as living area: Yes

Heated: Yes
Finished: Yes
Enclosed: Yes
Contiguous: Yes
Permitted: Yes
Wet space: Yes
Addition: No
Conversion: No

10 Floor 1 - Kitchen



Dimensions: 18'6" x 8'3"
Area: 141 sq. ft
Counted as living area: Yes

Heated: Yes
Finished: Yes
Enclosed: Yes
Contiguous: Yes
Permitted: Yes
Wet space: No
Addition: No
Conversion: No