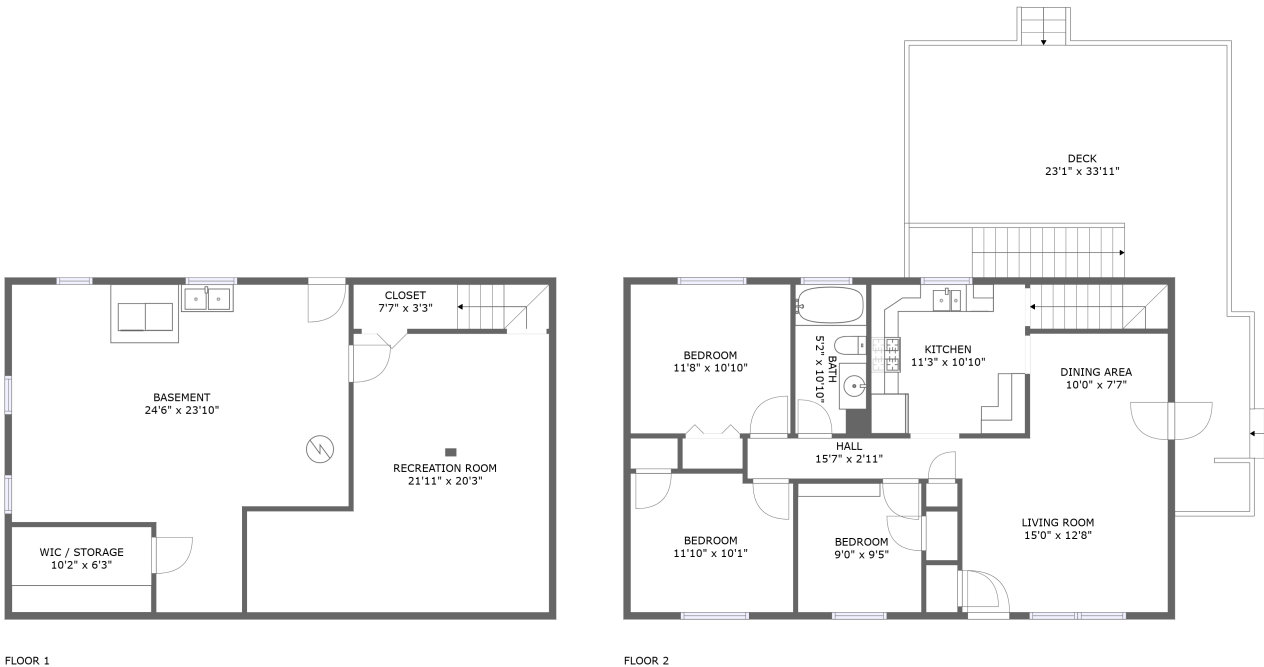


Home report

4714 Pennsylvania Avenue Northeast, Monterey, Roanoke,
Roanoke city, Virginia, United States, 24019




Total Area: 1339 sq. ft

Below Ground: 407 sq. ft, Floor 2: 932 sq. ft

Excluded: Wic / storage 69 sq. ft, Basement 456 sq. ft, Deck 472 sq. ft, Walls: 128 sq. ft

Property summary

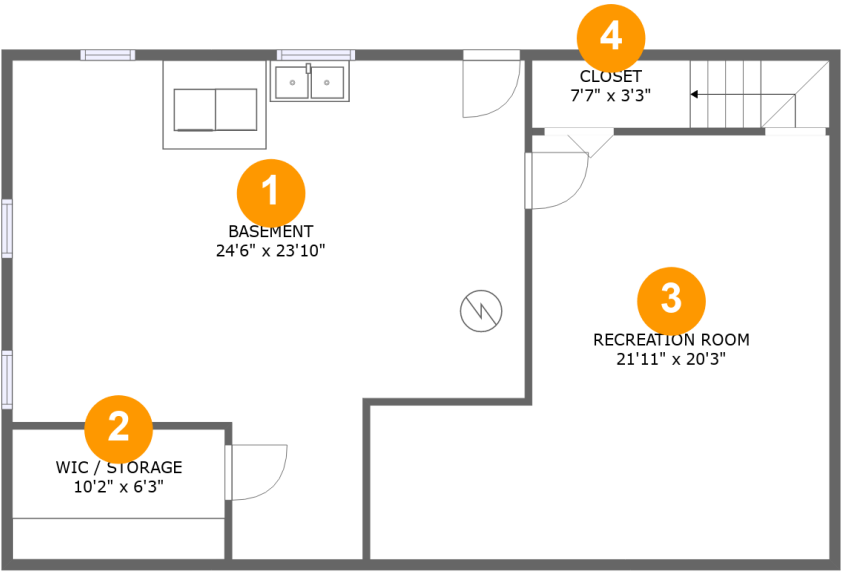
 2 Floors

 3 Bedrooms

 1 Bathrooms

Home report

4714 Pennsylvania Avenue Northeast, Monterey, Roanoke,
Roanoke city, Virginia, United States, 24019



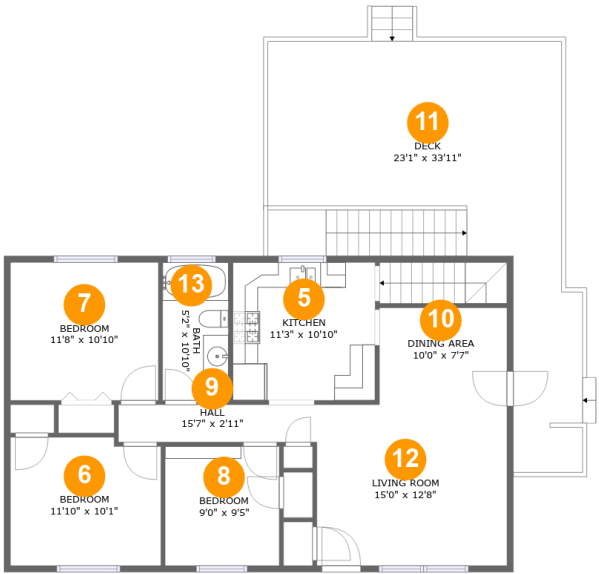
Room dimensions

Floor 1 Below ground Total:407sqft Excluded: 525sqft

#		Max Dimensions	sqft	Included
1	Basement	24'6" x 23'10"	456 sq. ft	No
2	Wic / Storage	10'2" x 6'3"	63 sq. ft	No
3	Recreation Room	21'11" x 20'3"	346 sq. ft	Yes
4	Closet	7'7" x 3'3"	46 sq. ft	Yes

Home report

4714 Pennsylvania Avenue Northeast, Monterey, Roanoke,
Roanoke city, Virginia, United States, 24019



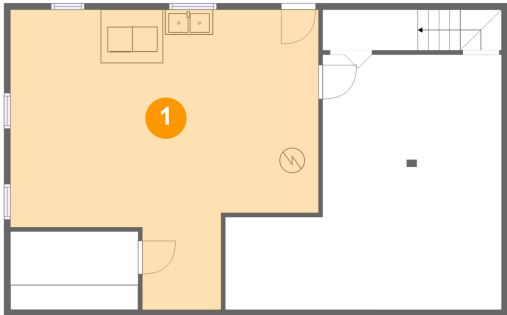
Room dimensions

Floor 2 Total:932sqft Excluded: 472sqft

#		Max Dimensions	sqft	Included
5	Kitchen	11'3" x 10'10"	122 sq. ft	Yes
6	Bedroom	11'10" x 10'1"	117 sq. ft	Yes
7	Bedroom	11'8" x 10'10"	126 sq. ft	Yes
8	Bedroom	9'0" x 9'5"	84 sq. ft	Yes
9	Hall	15'7" x 2'11"	46 sq. ft	Yes
10	Dining Area	10'0" x 7'7"	76 sq. ft	Yes
11	Deck	23'1" x 33'11"	472 sq. ft	No
12	Living Room	15'0" x 12'8"	189 sq. ft	Yes
13	Bath	5'2" x 10'10"	56 sq. ft	Yes

4714 Pennsylvania Avenue Northeast, Monterey, Roanoke,
Roanoke city, Virginia, United States, 24019

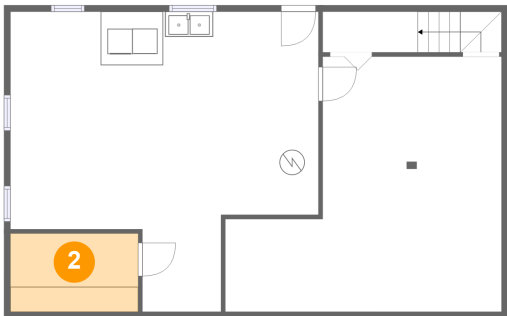
1 Floor 1 - Basement



Max Dimensions: 24'6" x 23'10"
Calculated Area: 456 sq. ft
Included: No

Heated: Yes
Finished: No
Enclosed: Yes
Contiguous: Yes
Permitted: Yes
Wet space: No
Addition: No
Conversion: No

2 Floor 1 - Wic / Storage



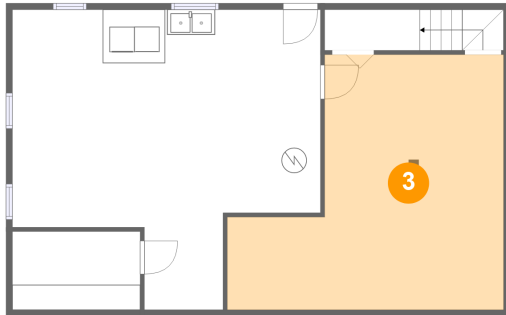
Max Dimensions: 10'2" x 6'3"
Calculated Area: 63 sq. ft
Included: No

Heated: No
Finished: No
Enclosed: No
Contiguous: Yes
Permitted: Yes
Wet space: No
Addition: No
Conversion: No

Home report

4714 Pennsylvania Avenue Northeast, Monterey, Roanoke,
Roanoke city, Virginia, United States, 24019

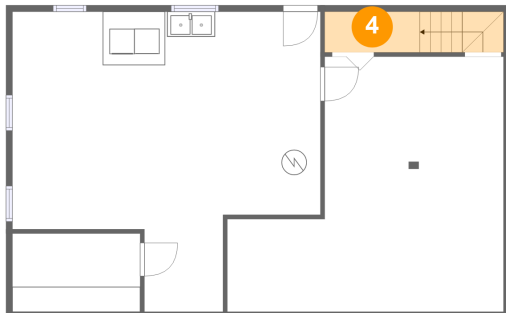
3 Floor 1 - Recreation Room



Max Dimensions: 21'11" x 20'3"
Calculated Area: 346 sq. ft
Included: Yes

Heated: Yes
Finished: Yes
Enclosed: Yes
Contiguous: Yes
Permitted: Yes
Wet space: No
Addition: No
Conversion: No

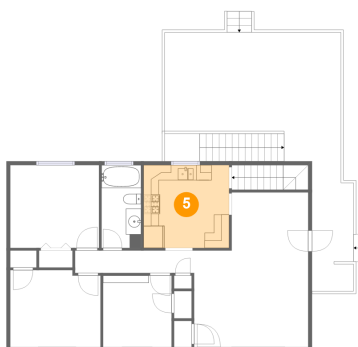
4 Floor 1 - Closet



Max Dimensions: 7'7" x 3'3"
Calculated Area: 46 sq. ft
Included: Yes

Heated: Yes
Finished: Yes
Enclosed: Yes
Contiguous: Yes
Permitted: Yes
Wet space: No
Addition: No
Conversion: No

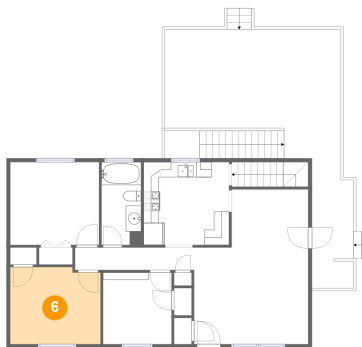
5 Floor 2 - Kitchen



Max Dimensions: 11'3" x 10'10"
Calculated Area: 122 sq. ft
Included: Yes

Heated: Yes
Finished: Yes
Enclosed: Yes
Contiguous: Yes
Permitted: Yes
Wet space: No
Addition: No
Conversion: No

6 Floor 2 - Bedroom



Max Dimensions: 11'10" x 10'1"
Calculated Area: 117 sq. ft
Included: Yes

Heated: Yes
Finished: Yes
Enclosed: Yes
Contiguous: Yes
Permitted: Yes
Wet space: No
Addition: No
Conversion: No

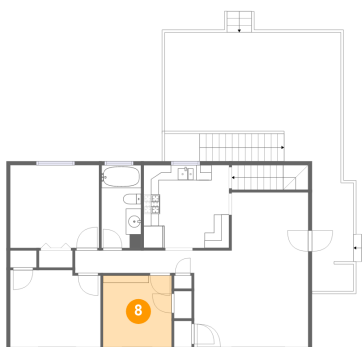
7 Floor 2 - Bedroom



Max Dimensions: 11'8" x 10'10"
Calculated Area: 126 sq. ft
Included: Yes

Heated: Yes
Finished: Yes
Enclosed: Yes
Contiguous: Yes
Permitted: Yes
Wet space: No
Addition: No
Conversion: No

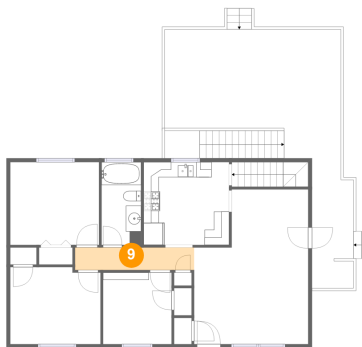
8 Floor 2 - Bedroom



Max Dimensions: 9'0" x 9'5"
Calculated Area: 84 sq. ft
Included: Yes

Heated: Yes
Finished: Yes
Enclosed: Yes
Contiguous: Yes
Permitted: Yes
Wet space: No
Addition: No
Conversion: No

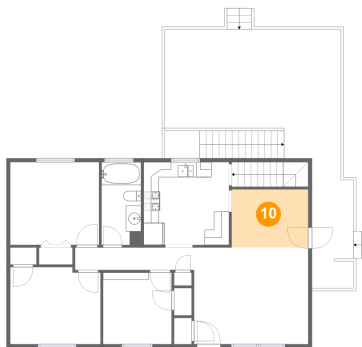
9 Floor 2 - Hall



Max Dimensions: 15'7" x 2'11"
Calculated Area: 46 sq. ft
Included: Yes

Heated: Yes
Finished: Yes
Enclosed: Yes
Contiguous: Yes
Permitted: Yes
Wet space: No
Addition: No
Conversion: No

10 Floor 2 - Dining Area



Max Dimensions: 10'0" x 7'7"
Calculated Area: 76 sq. ft
Included: Yes

Heated: Yes
Finished: Yes
Enclosed: Yes
Contiguous: Yes
Permitted: Yes
Wet space: No
Addition: No
Conversion: No

11 Floor 2 - Deck

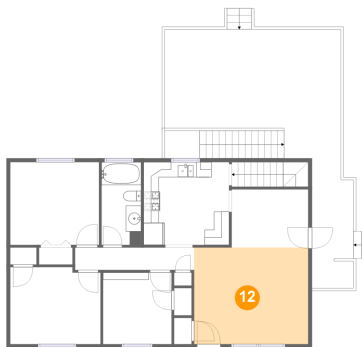


Max Dimensions: 23'1" x 33'11"
Calculated Area: 472 sq. ft
Included: No

Heated: No
Finished: Yes
Enclosed: No
Contiguous: Yes
Permitted: Yes
Wet space: No
Addition: No
Conversion: No

4714 Pennsylvania Avenue Northeast, Monterey, Roanoke,
Roanoke city, Virginia, United States, 24019

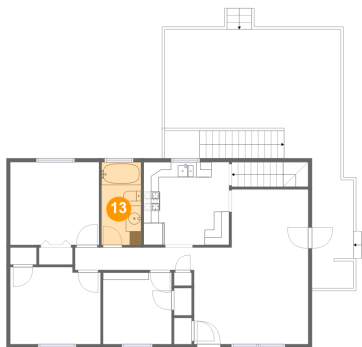
12 Floor 2 - Living Room



Max Dimensions: 15'0" x 12'8"
Calculated Area: 189 sq. ft
Included: Yes

Heated: Yes
Finished: Yes
Enclosed: Yes
Contiguous: Yes
Permitted: Yes
Wet space: No
Addition: No
Conversion: No

13 Floor 2 - Bath



Max Dimensions: 5'2" x 10'10"
Calculated Area: 56 sq. ft
Included: Yes

Heated: Yes
Finished: Yes
Enclosed: Yes
Contiguous: Yes
Permitted: Yes
Wet space: Yes
Addition: No
Conversion: No