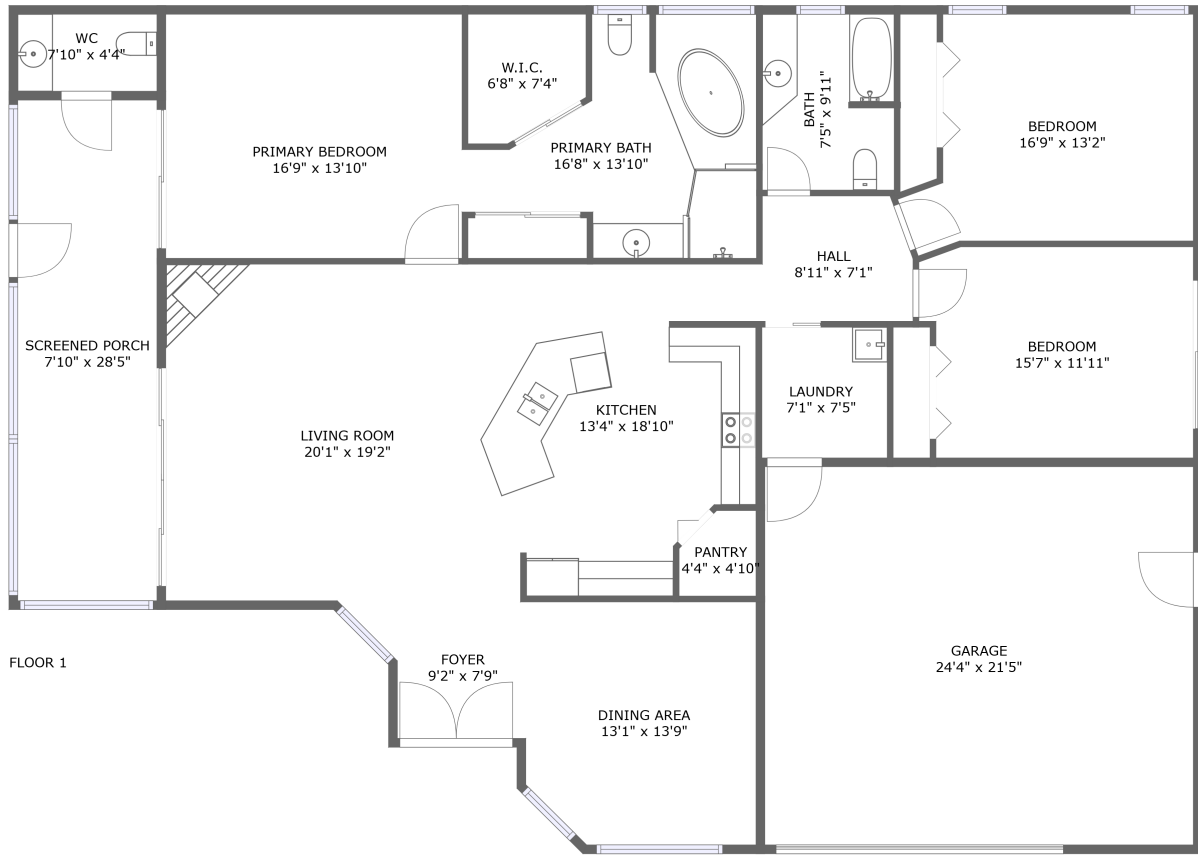



2429 Dana Drive, Los Arcos, Safety Harbor, Pinellas County, Florida, United States, 34695



Property summary

 **1** Garages

 **3** Bedrooms

 **2** Bathrooms

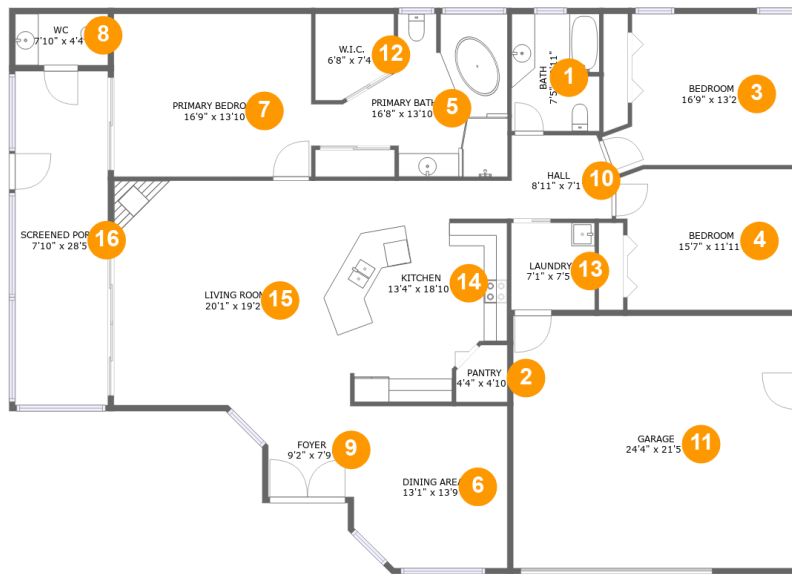
 **1** Half baths

 **1** Floors

 **2,080** Gross living area sqft

 **2,913** Total sqft

2429 Dana Drive, Los Arcos, Safety Harbor, Pinellas County, Florida, United States, 34695



Room dimensions

Floor 1

Total sqft: 2913 Living area: 2080

#		Dimensions	sqft	Counted as living area
1	Bath	7'5" x 9'11"	74 sq. ft	Yes
2	Pantry	4'4" x 4'10"	19 sq. ft	Yes
3	Bedroom	16'9" x 13'2"	190 sq. ft	Yes
4	Bedroom	15'7" x 11'11"	178 sq. ft	Yes
5	Bath	16'8" x 13'10"	161 sq. ft	Yes
6	Dining Room	13'1" x 13'9"	174 sq. ft	Yes
7	Bedroom	16'9" x 13'10"	233 sq. ft	Yes
8	Bath	7'10" x 4'4"	34 sq. ft	No
9	Entry	9'2" x 7'9"	62 sq. ft	Yes
10	Hall	8'11" x 7'1"	60 sq. ft	Yes
11	Garage	24'4" x 21'5"	521 sq. ft	No

Scan captured on Thu, 14 Nov 2024 19:19:13 GMT

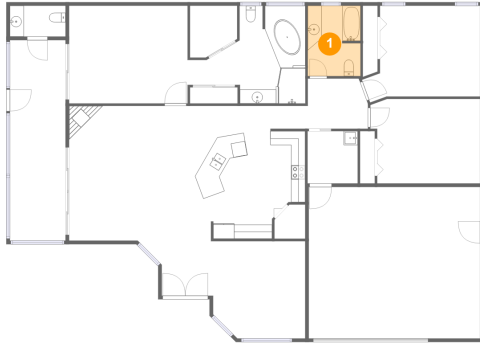
Information is calculated by Cubicasa technology deemed highly reliable but not guaranteed.

**2429 Dana Drive, Los Arcos, Safety Harbor, Pinellas
County, Florida, United States, 34695**

#		Dimensions	sqft	Counted as living area
12	Cl	6'8" x 7'4"	43 sq. ft	Yes
13	Utility	7'1" x 7'5"	53 sq. ft	Yes
14	Kitchen	13'4" x 18'10"	227 sq. ft	Yes
15	Living Room	20'1" x 19'2"	385 sq. ft	Yes
16	Outdoor	7'10" x 28'5"	224 sq. ft	No

2429 Dana Drive, Los Arcos, Safety Harbor, Pinellas County, Florida, United States, 34695

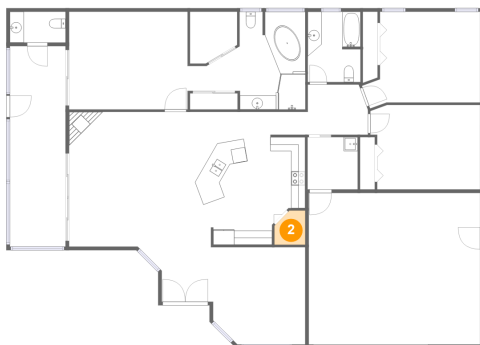
1 Floor 1 - Bath



Dimensions: 7'5" x 9'11"
Area: 74 sq. ft
Counted as living area: Yes

Heated: Yes
Finished: Yes
Enclosed: Yes
Contiguous: Yes
Permitted: Yes
Wet space: Yes
Addition: No
Conversion: No

2 Floor 1 - Pantry

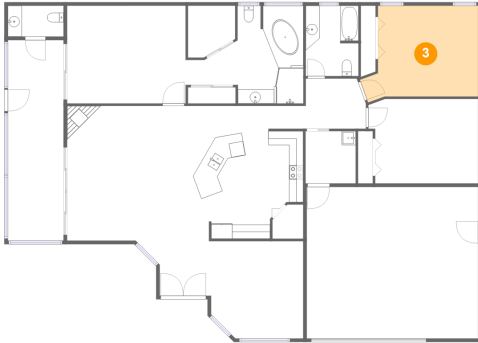


Dimensions: 4'4" x 4'10"
Area: 19 sq. ft
Counted as living area: Yes

Heated: Yes
Finished: Yes
Enclosed: Yes
Contiguous: Yes
Permitted: Yes
Wet space: No
Addition: No
Conversion: No

2429 Dana Drive, Los Arcos, Safety Harbor, Pinellas County, Florida, United States, 34695

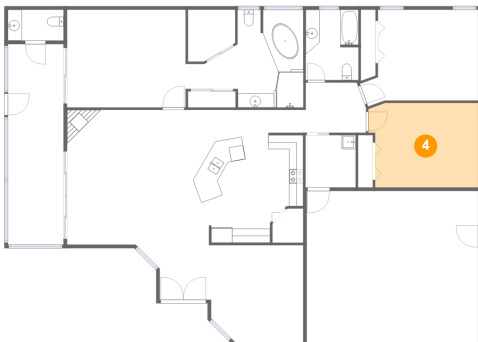
3 Floor 1 - Bedroom



Dimensions: 16'9" x 13'2"
Area: 190 sq. ft
Counted as living area: Yes

Heated: Yes
Finished: Yes
Enclosed: Yes
Contiguous: Yes
Permitted: Yes
Wet space: No
Addition: No
Conversion: No

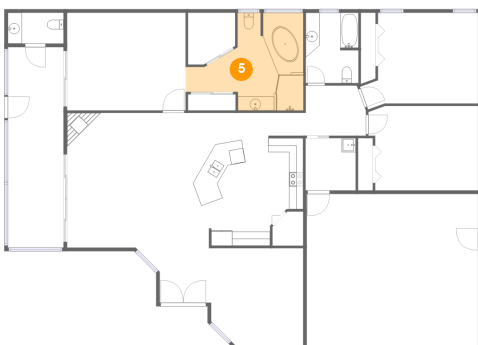
4 Floor 1 - Bedroom



Dimensions: 15'7" x 11'11"
Area: 178 sq. ft
Counted as living area: Yes

Heated: Yes
Finished: Yes
Enclosed: Yes
Contiguous: Yes
Permitted: Yes
Wet space: No
Addition: No
Conversion: No

5 Floor 1 - Bath

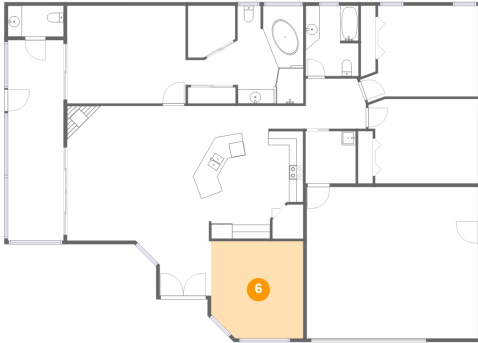


Dimensions: 16'8" x 13'10"
Area: 161 sq. ft
Counted as living area: Yes

Heated: Yes
Finished: Yes
Enclosed: Yes
Contiguous: Yes
Permitted: Yes
Wet space: Yes
Addition: No
Conversion: No

**2429 Dana Drive, Los Arcos, Safety Harbor, Pinellas
County, Florida, United States, 34695**

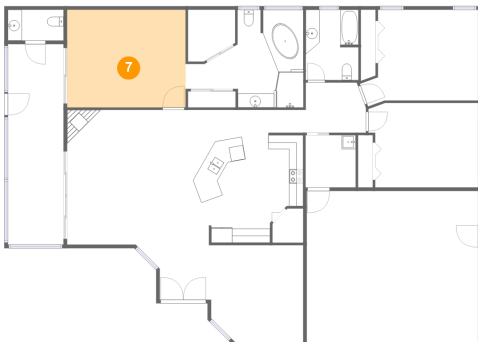
6 Floor 1 - Dining Room



Dimensions: 13'1" x 13'9"
Area: 174 sq. ft
Counted as living area: Yes

Heated: Yes
Finished: Yes
Enclosed: Yes
Contiguous: Yes
Permitted: Yes
Wet space: No
Addition: No
Conversion: No

7 Floor 1 - Bedroom



Dimensions: 16'9" x 13'10"
Area: 233 sq. ft
Counted as living area: Yes

Heated: Yes
Finished: Yes
Enclosed: Yes
Contiguous: Yes
Permitted: Yes
Wet space: No
Addition: No
Conversion: No

8 Floor 1 - Bath

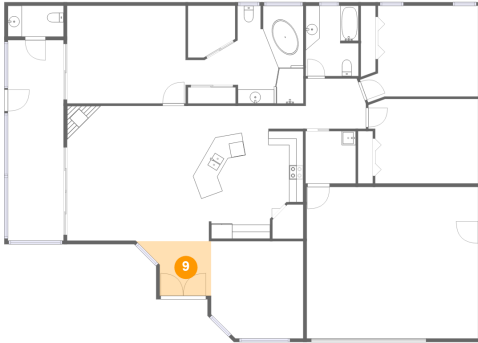


Dimensions: 7'10" x 4'4"
Area: 34 sq. ft
Counted as living area: No

Heated: Yes
Finished: Yes
Enclosed: Yes
Contiguous: No
Permitted: Yes
Wet space: Yes
Addition: No
Conversion: No

2429 Dana Drive, Los Arcos, Safety Harbor, Pinellas County, Florida, United States, 34695

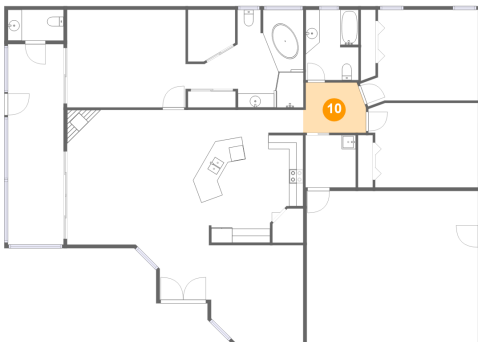
9 Floor 1 - Entry



Dimensions: 9'2" x 7'9"
Area: 62 sq. ft
Counted as living area: Yes

Heated: Yes
Finished: Yes
Enclosed: Yes
Contiguous: Yes
Permitted: Yes
Wet space: No
Addition: No
Conversion: No

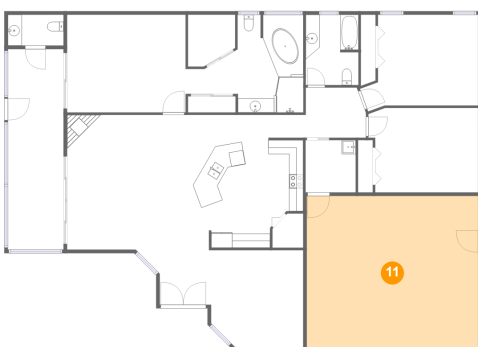
10 Floor 1 - Hall



Dimensions: 8'11" x 7'1"
Area: 60 sq. ft
Counted as living area: Yes

Heated: Yes
Finished: Yes
Enclosed: Yes
Contiguous: Yes
Permitted: Yes
Wet space: No
Addition: No
Conversion: No

11 Floor 1 - Garage

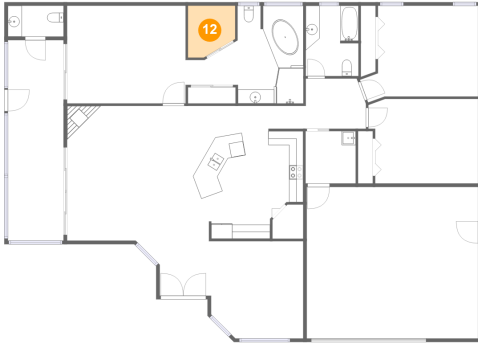


Dimensions: 24'4" x 21'5"
Area: 521 sq. ft
Counted as living area: No

Heated: No
Finished: No
Enclosed: Yes
Contiguous: Yes
Permitted: Yes
Wet space: No
Addition: No
Conversion: No

2429 Dana Drive, Los Arcos, Safety Harbor, Pinellas County, Florida, United States, 34695

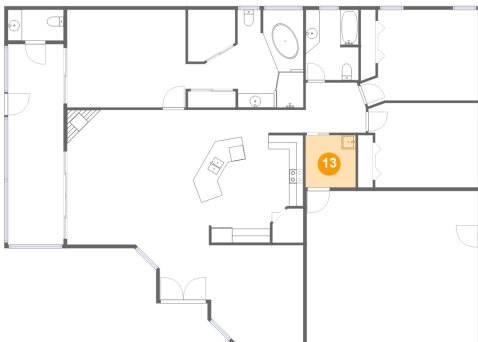
12 Floor 1 - Cl



Dimensions: 6'8" x 7'4"
Area: 43 sq. ft
Counted as living area: Yes

Heated: Yes
Finished: Yes
Enclosed: Yes
Contiguous: Yes
Permitted: Yes
Wet space: No
Addition: No
Conversion: No

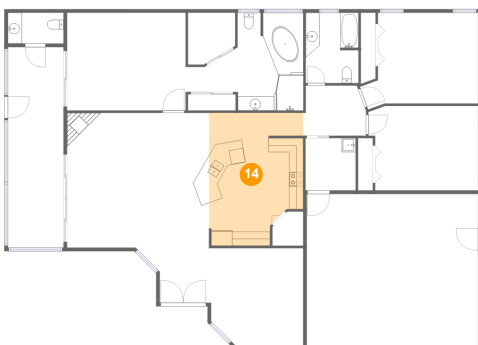
13 Floor 1 - Utility



Dimensions: 7'1" x 7'5"
Area: 53 sq. ft
Counted as living area: Yes

Heated: Yes
Finished: Yes
Enclosed: Yes
Contiguous: Yes
Permitted: Yes
Wet space: No
Addition: No
Conversion: No

14 Floor 1 - Kitchen

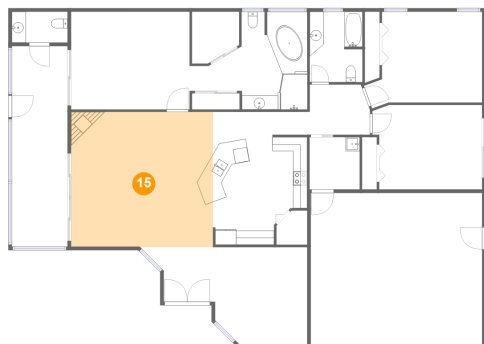


Dimensions: 13'4" x 18'10"
Area: 227 sq. ft
Counted as living area: Yes

Heated: Yes
Finished: Yes
Enclosed: Yes
Contiguous: Yes
Permitted: Yes
Wet space: No
Addition: No
Conversion: No

2429 Dana Drive, Los Arcos, Safety Harbor, Pinellas County, Florida, United States, 34695

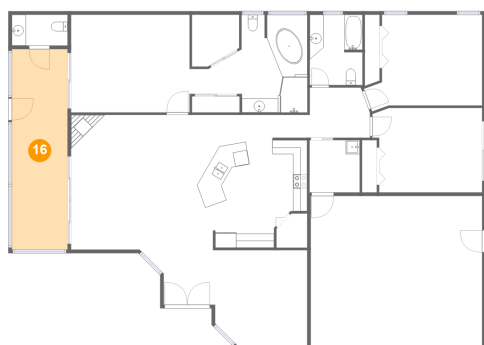
15 Floor 1 - Living Room



Dimensions: 20'1" x 19'2"
Area: 385 sq. ft
Counted as living area: Yes

Heated: Yes
Finished: Yes
Enclosed: Yes
Contiguous: Yes
Permitted: Yes
Wet space: No
Addition: No
Conversion: No

16 Floor 1 - Outdoor



Dimensions: 7'10" x 28'5"
Area: 224 sq. ft
Counted as living area: No

Heated: No
Finished: Yes
Enclosed: No
Contiguous: Yes
Permitted: Yes
Wet space: No
Addition: No
Conversion: No