

Home report

15017 46th Avenue Southeast, Silver Firs, Everett, Snohomish County, Washington, United States, 98208



Property summary

 **2** Garages

 **3** Bedrooms

 **2** Bathrooms

 **1** Half baths

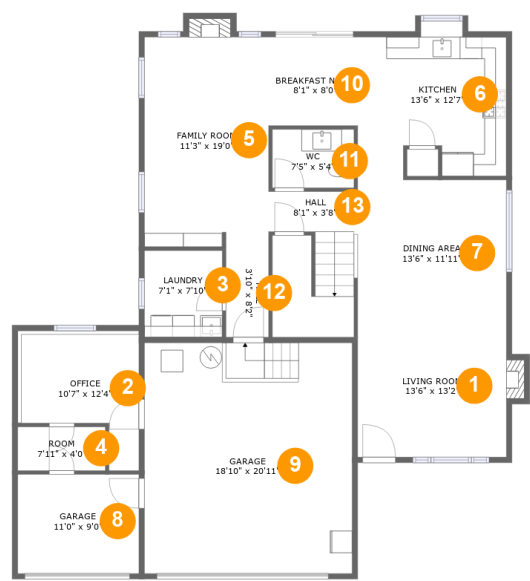
 **2** Floors

 **2,079** Gross living area sqft

 **3,140** Total sqft

Home report

15017 46th Avenue Southeast, Silver Firs, Everett, Snohomish County, Washington, United States, 98208



Room dimensions

Floor 1 Total sqft: 1813    Living area: 1108

#		Dimensions	sqft	Counted as living area
1	Living Room	13'6" x 13'2"	183 sq. ft	Yes
2	Office	10'7" x 12'4"	103 sq. ft	No
3	Laundry	7'1" x 7'10"	55 sq. ft	Yes
4	Room	7'11" x 4'0"	31 sq. ft	No
5	Family Room	11'3" x 19'0"	220 sq. ft	Yes
6	Kitchen	13'6" x 12'7"	161 sq. ft	Yes
7	Dining Area	13'6" x 11'11"	160 sq. ft	Yes
8	Garage	11'0" x 9'0"	99 sq. ft	No
9	Garage	18'10" x 20'11"	393 sq. ft	No
10	Breakfast Nook	8'1" x 8'0"	65 sq. ft	Yes
11	WC	7'5" x 5'4"	48 sq. ft	Yes

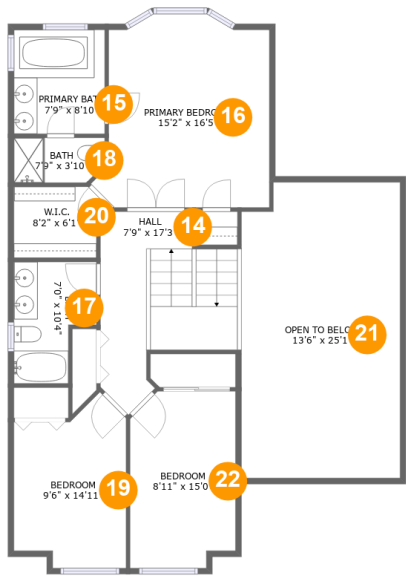
Home report

15017 46th Avenue Southeast, Silver Firs, Everett, Snohomish County, Washington, United States, 98208

#		Dimensions	sqft	Counted as living area
12	Hall	3'10" x 8'2"	32 sq. ft	Yes
13	Hall	8'1" x 3'8"	98 sq. ft	Yes

Home report

15017 46th Avenue Southeast, Silver Firs, Everett, Snohomish County, Washington, United States, 98208



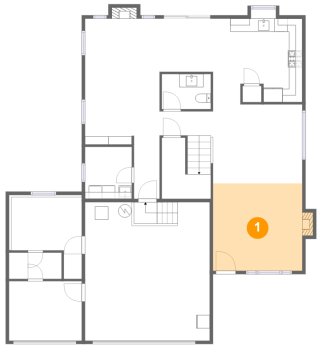
Room dimensions

Floor 2 Total sqft: 1327    Living area: 971

#		Dimensions	sqft	Counted as living area
14	Hall	7'9" x 17'3"	145 sq. ft	Yes
15	Primary Bath	7'9" x 8'10"	68 sq. ft	Yes
16	Primary Bedroom	15'2" x 16'5"	217 sq. ft	Yes
17	Bath	7'0" x 10'4"	60 sq. ft	Yes
18	Bath	7'9" x 3'10"	28 sq. ft	Yes
19	Bedroom	9'6" x 14'11"	120 sq. ft	Yes
20	W.I.C.	8'2" x 6'1"	44 sq. ft	Yes
21	Open To Below	13'6" x 25'1"	331 sq. ft	No
22	Bedroom	8'11" x 15'0"	128 sq. ft	Yes

15017 46th Avenue Southeast, Silver Firs, Everett, Snohomish County, Washington, United States, 98208

1 Floor 1 - Living Room



Dimensions: 13'6" x 13'2"  
Area: 183 sq. ft  
Counted as living area: Yes

Heated: Yes  
Finished: Yes  
Enclosed: Yes  
Contiguous: Yes  
Permitted: Yes  
Wet space: No  
Addition: No  
Conversion: No

2 Floor 1 - Office



Dimensions: 10'7" x 12'4"  
Area: 103 sq. ft  
Counted as living area: No

Heated: Yes  
Finished: Yes  
Enclosed: Yes  
Contiguous: No  
Permitted: Yes  
Wet space: No  
Addition: No  
Conversion: No

15017 46th Avenue Southeast, Silver Firs, Everett, Snohomish County, Washington, United States, 98208

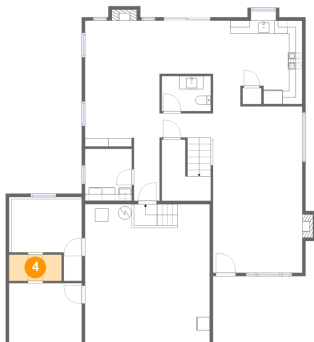
### 3 Floor 1 - Laundry



Dimensions: 7'1" x 7'10"  
Area: 55 sq. ft  
Counted as living area: Yes

Heated: Yes  
Finished: Yes  
Enclosed: Yes  
Contiguous: Yes  
Permitted: Yes  
Wet space: No  
Addition: No  
Conversion: No

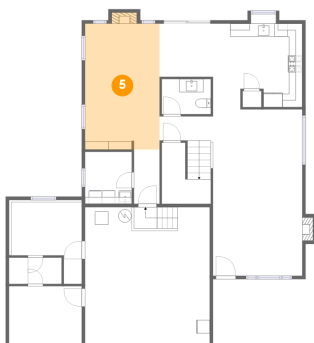
### 4 Floor 1 - Room



Dimensions: 7'11" x 4'0"  
Area: 31 sq. ft  
Counted as living area: No

Heated: Yes  
Finished: Yes  
Enclosed: Yes  
Contiguous: No  
Permitted: Yes  
Wet space: No  
Addition: No  
Conversion: No

### 5 Floor 1 - Family Room



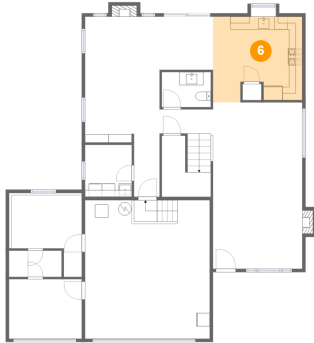
Dimensions: 11'3" x 19'0"  
Area: 220 sq. ft  
Counted as living area: Yes

Heated: Yes  
Finished: Yes  
Enclosed: Yes  
Contiguous: Yes  
Permitted: Yes  
Wet space: No  
Addition: No  
Conversion: No

## Home report

15017 46th Avenue Southeast, Silver Firs, Everett, Snohomish County, Washington, United States, 98208

### 6 Floor 1 - Kitchen



Dimensions: 13'6" x 12'7"  
Area: 161 sq. ft  
Counted as living area: Yes

Heated: Yes  
Finished: Yes  
Enclosed: Yes  
Contiguous: Yes  
Permitted: Yes  
Wet space: No  
Addition: No  
Conversion: No

### 7 Floor 1 - Dining Area



Dimensions: 13'6" x 11'11"  
Area: 160 sq. ft  
Counted as living area: Yes

Heated: Yes  
Finished: Yes  
Enclosed: Yes  
Contiguous: Yes  
Permitted: Yes  
Wet space: No  
Addition: No  
Conversion: No

### 8 Floor 1 - Garage



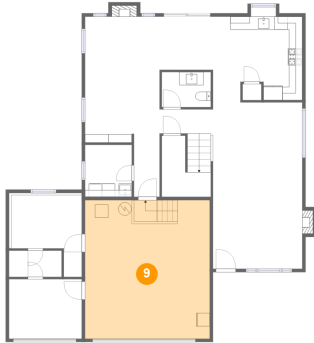
Dimensions: 11'0" x 9'0"  
Area: 99 sq. ft  
Counted as living area: No

Heated: No  
Finished: No  
Enclosed: Yes  
Contiguous: Yes  
Permitted: Yes  
Wet space: No  
Addition: No  
Conversion: No

## Home report

15017 46th Avenue Southeast, Silver Firs, Everett, Snohomish County, Washington, United States, 98208

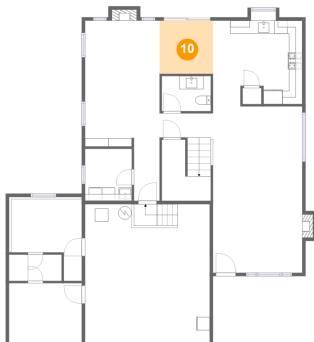
### 9 Floor 1 - Garage



Dimensions: 18'10" x 20'11"  
Area: 393 sq. ft  
Counted as living area: No

Heated: No  
Finished: No  
Enclosed: Yes  
Contiguous: Yes  
Permitted: Yes  
Wet space: No  
Addition: No  
Conversion: No

### 10 Floor 1 - Breakfast Nook



Dimensions: 8'1" x 8'0"  
Area: 65 sq. ft  
Counted as living area: Yes

Heated: Yes  
Finished: Yes  
Enclosed: Yes  
Contiguous: Yes  
Permitted: Yes  
Wet space: No  
Addition: No  
Conversion: No

### 11 Floor 1 - WC



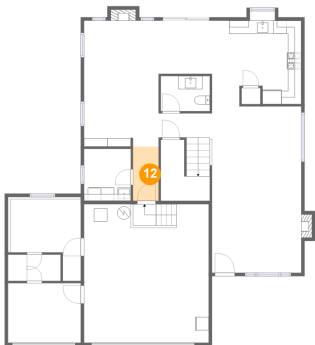
Dimensions: 7'5" x 5'4"  
Area: 48 sq. ft  
Counted as living area: Yes

Heated: Yes  
Finished: Yes  
Enclosed: Yes  
Contiguous: Yes  
Permitted: Yes  
Wet space: No  
Addition: No  
Conversion: No



15017 46th Avenue Southeast, Silver Firs, Everett, Snohomish County, Washington, United States, 98208

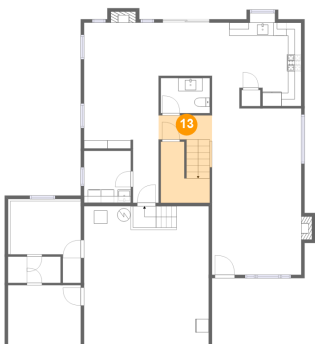
12 Floor 1 - Hall



Dimensions: 3'10" x 8'2"  
Area: 32 sq. ft  
Counted as living area: Yes

Heated: Yes  
Finished: Yes  
Enclosed: Yes  
Contiguous: Yes  
Permitted: Yes  
Wet space: No  
Addition: No  
Conversion: No

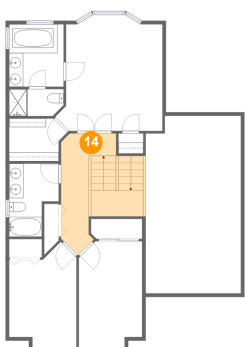
13 Floor 1 - Hall



Dimensions: 8'1" x 3'8"  
Area: 98 sq. ft  
Counted as living area: Yes

Heated: Yes  
Finished: Yes  
Enclosed: Yes  
Contiguous: Yes  
Permitted: Yes  
Wet space: No  
Addition: No  
Conversion: No

14 Floor 2 - Hall

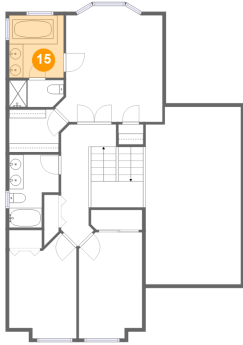


Dimensions: 7'9" x 17'3"  
Area: 145 sq. ft  
Counted as living area: Yes

Heated: Yes  
Finished: Yes  
Enclosed: Yes  
Contiguous: Yes  
Permitted: Yes  
Wet space: No  
Addition: No  
Conversion: No

15017 46th Avenue Southeast, Silver Firs, Everett, Snohomish County, Washington, United States, 98208

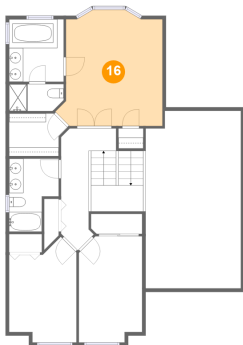
## 15 Floor 2 - Primary Bath



Dimensions: 7'9" x 8'10"  
Area: 68 sq. ft  
Counted as living area: Yes

Heated: Yes  
Finished: Yes  
Enclosed: Yes  
Contiguous: Yes  
Permitted: Yes  
Wet space: Yes  
Addition: No  
Conversion: No

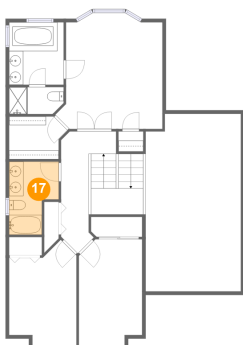
## 16 Floor 2 - Primary Bedroom



Dimensions: 15'2" x 16'5"  
Area: 217 sq. ft  
Counted as living area: Yes

Heated: Yes  
Finished: Yes  
Enclosed: Yes  
Contiguous: Yes  
Permitted: Yes  
Wet space: No  
Addition: No  
Conversion: No

## 17 Floor 2 - Bath

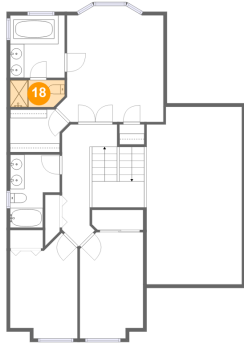


Dimensions: 7'0" x 10'4"  
Area: 60 sq. ft  
Counted as living area: Yes

Heated: Yes  
Finished: Yes  
Enclosed: Yes  
Contiguous: Yes  
Permitted: Yes  
Wet space: Yes  
Addition: No  
Conversion: No

15017 46th Avenue Southeast, Silver Firs, Everett, Snohomish County, Washington, United States, 98208

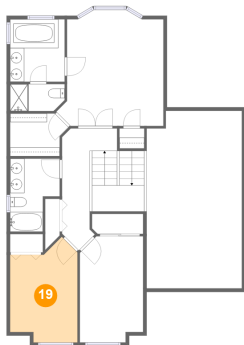
## 18 Floor 2 - Bath



Dimensions: 7'9" x 3'10"  
Area: 28 sq. ft  
Counted as living area: Yes

Heated: Yes  
Finished: Yes  
Enclosed: Yes  
Contiguous: Yes  
Permitted: Yes  
Wet space: Yes  
Addition: No  
Conversion: No

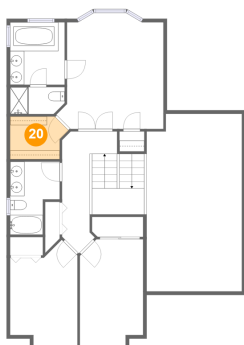
## 19 Floor 2 - Bedroom



Dimensions: 9'6" x 14'11"  
Area: 120 sq. ft  
Counted as living area: Yes

Heated: Yes  
Finished: Yes  
Enclosed: Yes  
Contiguous: Yes  
Permitted: Yes  
Wet space: No  
Addition: No  
Conversion: No

## 20 Floor 2 - W.I.C.

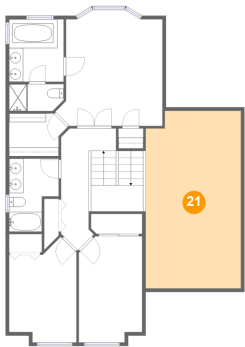


Dimensions: 8'2" x 6'1"  
Area: 44 sq. ft  
Counted as living area: Yes

Heated: Yes  
Finished: Yes  
Enclosed: Yes  
Contiguous: Yes  
Permitted: Yes  
Wet space: No  
Addition: No  
Conversion: No

15017 46th Avenue Southeast, Silver Firs, Everett, Snohomish County, Washington, United States, 98208

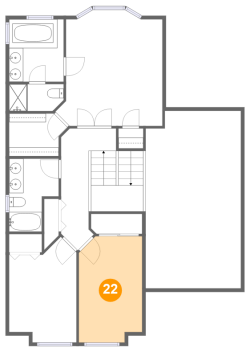
21 Floor 2 - Open To Below



Dimensions: 13'6" x 25'1"  
Area: 331 sq. ft  
Counted as living area: No

Heated: No  
Finished: No  
Enclosed: No  
Contiguous: Yes  
Permitted: No  
Wet space: No  
Addition: No  
Conversion: No

22 Floor 2 - Bedroom



Dimensions: 8'11" x 15'0"  
Area: 128 sq. ft  
Counted as living area: Yes

Heated: Yes  
Finished: Yes  
Enclosed: Yes  
Contiguous: Yes  
Permitted: Yes  
Wet space: No  
Addition: No  
Conversion: No