

## Home data report

1 Amesbury Crescent, Albion, Stoney Creek, Ontario, Canada,  
L8J 1Z9

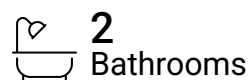
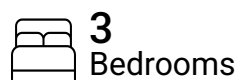


**Total Area: 2109 sq. ft**

1st Floor: 844 sq. ft, 2nd Floor: 1265 sq. ft

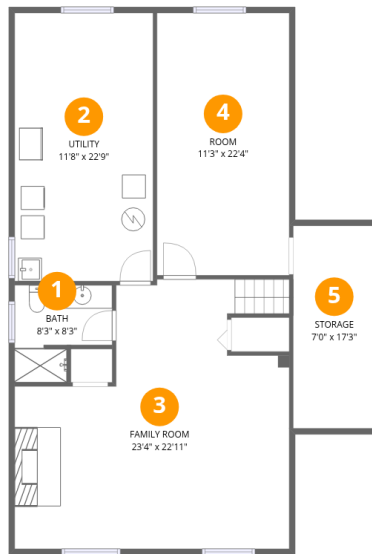
Excluded: Storage 136 sq. ft, Utility 286 sq. ft, Garage 202 sq. ft

## Property summary



## Home data report

1 Amesbury Crescent, Albion, Stoney Creek, Ontario, Canada,  
L8J 1Z9



## Room dimensions

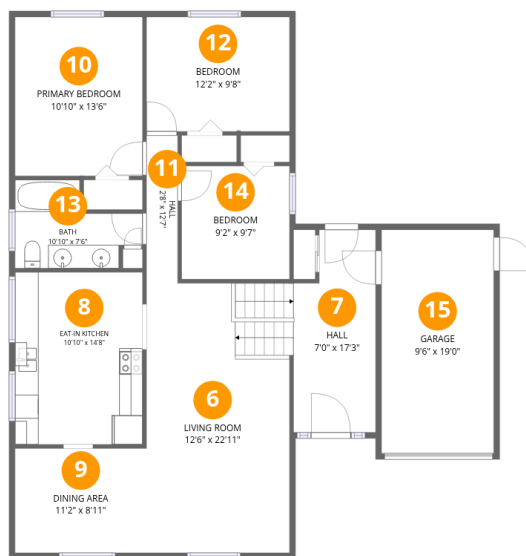
Floor 1

Total:844sqft Excluded: 422sqft

#		Dimensions	sqft	Counted as living area
1	Bath	8'3" x 8'3"	56 sq. ft	Yes
2	Utility	11'8" x 22'9"	268 sq. ft	No
3	Family Room	23'4" x 22'11"	436 sq. ft	Yes
4	Room	11'3" x 22'4"	251 sq. ft	Yes
5	Storage	7'0" x 17'3"	120 sq. ft	No

Home data report

1 Amesbury Crescent, Albion, Stoney Creek, Ontario, Canada, L8J 1Z9



Room dimensions

Floor 2

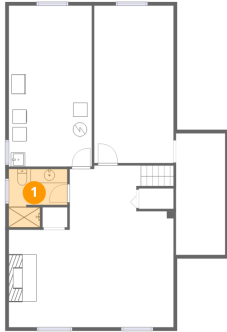
Total:1265sqft Excluded: 202sqft

#		Dimensions	sqft	Counted as living area
6	Living Room	12'6" x 22'11"	283 sq. ft	Yes
7	Hall	7'0" x 17'3"	110 sq. ft	Yes
8	Eat-in Kitchen	10'10" x 14'8"	159 sq. ft	Yes
9	Dining Area	11'2" x 8'11"	99 sq. ft	Yes
10	Primary Bedroom	10'10" x 13'6"	146 sq. ft	Yes
11	Hall	2'8" x 12'7"	33 sq. ft	Yes
12	Bedroom	12'2" x 9'8"	118 sq. ft	Yes
13	Bath	10'10" x 7'6"	62 sq. ft	Yes
14	Bedroom	9'2" x 9'7"	88 sq. ft	Yes
15	Garage	9'6" x 19'0"	181 sq. ft	No

1 Amesbury Crescent, Albion, Stoney Creek, Ontario, Canada,  
L8J 1Z9

1 Floor 1 - Bath

---

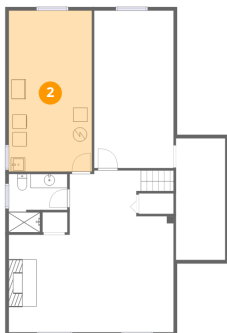


Dimensions: 8'3" x 8'3"  
Area: 56 sq. ft  
Counted as living area: Yes

Heated: Yes  
Finished: Yes  
Enclosed: Yes  
Contiguous: Yes  
Permitted: Yes  
Wet space: Yes  
Addition: No  
Conversion: No

2 Floor 1 - Utility

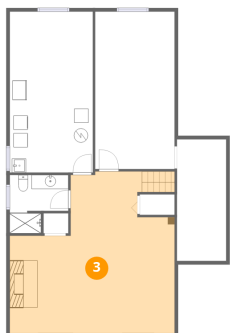
---



Dimensions: 11'8" x 22'9"  
Area: 268 sq. ft  
Counted as living area: No

Heated: Yes  
Finished: No  
Enclosed: Yes  
Contiguous: Yes  
Permitted: Yes  
Wet space: No  
Addition: No  
Conversion: No

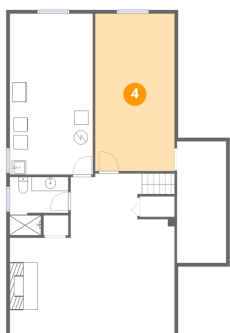
### 3 Floor 1 - Family Room



Dimensions: 23'4" x 22'11"  
Area: 436 sq. ft  
Counted as living area: Yes

Heated: Yes  
Finished: Yes  
Enclosed: Yes  
Contiguous: Yes  
Permitted: Yes  
Wet space: No  
Addition: No  
Conversion: No

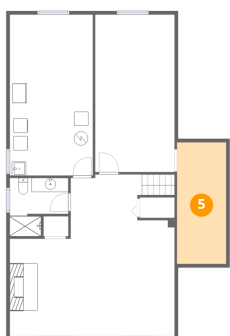
### 4 Floor 1 - Room



Dimensions: 11'3" x 22'4"  
Area: 251 sq. ft  
Counted as living area: Yes

Heated: Yes  
Finished: Yes  
Enclosed: Yes  
Contiguous: Yes  
Permitted: Yes  
Wet space: No  
Addition: No  
Conversion: No

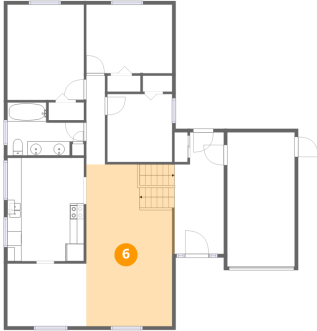
### 5 Floor 1 - Storage



Dimensions: 7'0" x 17'3"  
Area: 120 sq. ft  
Counted as living area: No

Heated: No  
Finished: No  
Enclosed: No  
Contiguous: Yes  
Permitted: Yes  
Wet space: No  
Addition: No  
Conversion: No

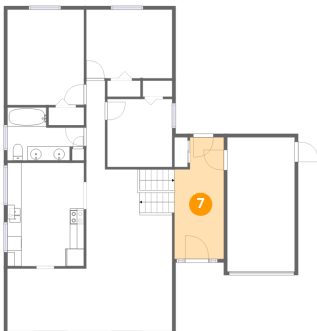
## 6 Floor 2 - Living Room



Dimensions: 12'6" x 22'11"  
Area: 283 sq. ft  
Counted as living area: Yes

Heated: Yes  
Finished: Yes  
Enclosed: Yes  
Contiguous: Yes  
Permitted: Yes  
Wet space: No  
Addition: No  
Conversion: No

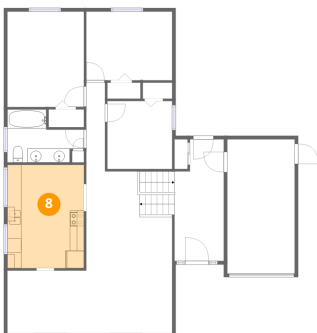
## 7 Floor 2 - Hall



Dimensions: 7'0" x 17'3"  
Area: 110 sq. ft  
Counted as living area: Yes

Heated: Yes  
Finished: Yes  
Enclosed: Yes  
Contiguous: Yes  
Permitted: Yes  
Wet space: No  
Addition: No  
Conversion: No

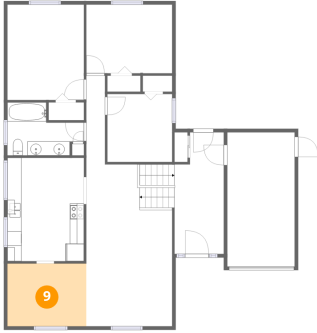
## 8 Floor 2 - Eat-in Kitchen



Dimensions: 10'10" x 14'8"  
Area: 159 sq. ft  
Counted as living area: Yes

Heated: Yes  
Finished: Yes  
Enclosed: Yes  
Contiguous: Yes  
Permitted: Yes  
Wet space: No  
Addition: No  
Conversion: No

## 9 Floor 2 - Dining Area



Dimensions: 11'2" x 8'11"  
Area: 99 sq. ft  
Counted as living area: Yes

Heated: Yes  
Finished: Yes  
Enclosed: Yes  
Contiguous: Yes  
Permitted: Yes  
Wet space: No  
Addition: No  
Conversion: No

## 10 Floor 2 - Primary Bedroom



Dimensions: 10'10" x 13'6"  
Area: 146 sq. ft  
Counted as living area: Yes

Heated: Yes  
Finished: Yes  
Enclosed: Yes  
Contiguous: Yes  
Permitted: Yes  
Wet space: No  
Addition: No  
Conversion: No

## 11 Floor 2 - Hall



Dimensions: 2'8" x 12'7"  
Area: 33 sq. ft  
Counted as living area: Yes

Heated: Yes  
Finished: Yes  
Enclosed: Yes  
Contiguous: Yes  
Permitted: Yes  
Wet space: No  
Addition: No  
Conversion: No

1 Amesbury Crescent, Albion, Stoney Creek, Ontario, Canada,  
L8J 1Z9

## 12 Floor 2 - Bedroom



Dimensions: 12'2" x 9'8"  
Area: 118 sq. ft  
Counted as living area: Yes

Heated: Yes  
Finished: Yes  
Enclosed: Yes  
Contiguous: Yes  
Permitted: Yes  
Wet space: No  
Addition: No  
Conversion: No

## 13 Floor 2 - Bath



Dimensions: 10'10" x 7'6"  
Area: 62 sq. ft  
Counted as living area: Yes

Heated: Yes  
Finished: Yes  
Enclosed: Yes  
Contiguous: Yes  
Permitted: Yes  
Wet space: Yes  
Addition: No  
Conversion: No

## 14 Floor 2 - Bedroom



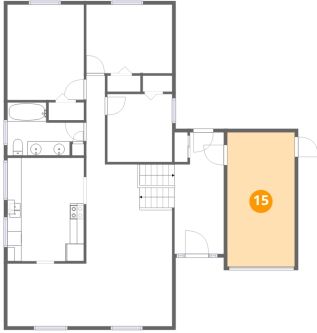
Dimensions: 9'2" x 9'7"  
Area: 88 sq. ft  
Counted as living area: Yes

Heated: Yes  
Finished: Yes  
Enclosed: Yes  
Contiguous: Yes  
Permitted: Yes  
Wet space: No  
Addition: No  
Conversion: No

Home data report

1 Amesbury Crescent, Albion, Stoney Creek, Ontario, Canada,  
L8J 1Z9

## 15 Floor 2 - Garage



Dimensions: 9'6" x 19'0"  
Area: 181 sq. ft  
Counted as living area: No

Heated: No  
Finished: No  
Enclosed: Yes  
Contiguous: Yes  
Permitted: Yes  
Wet space: No  
Addition: No  
Conversion: No