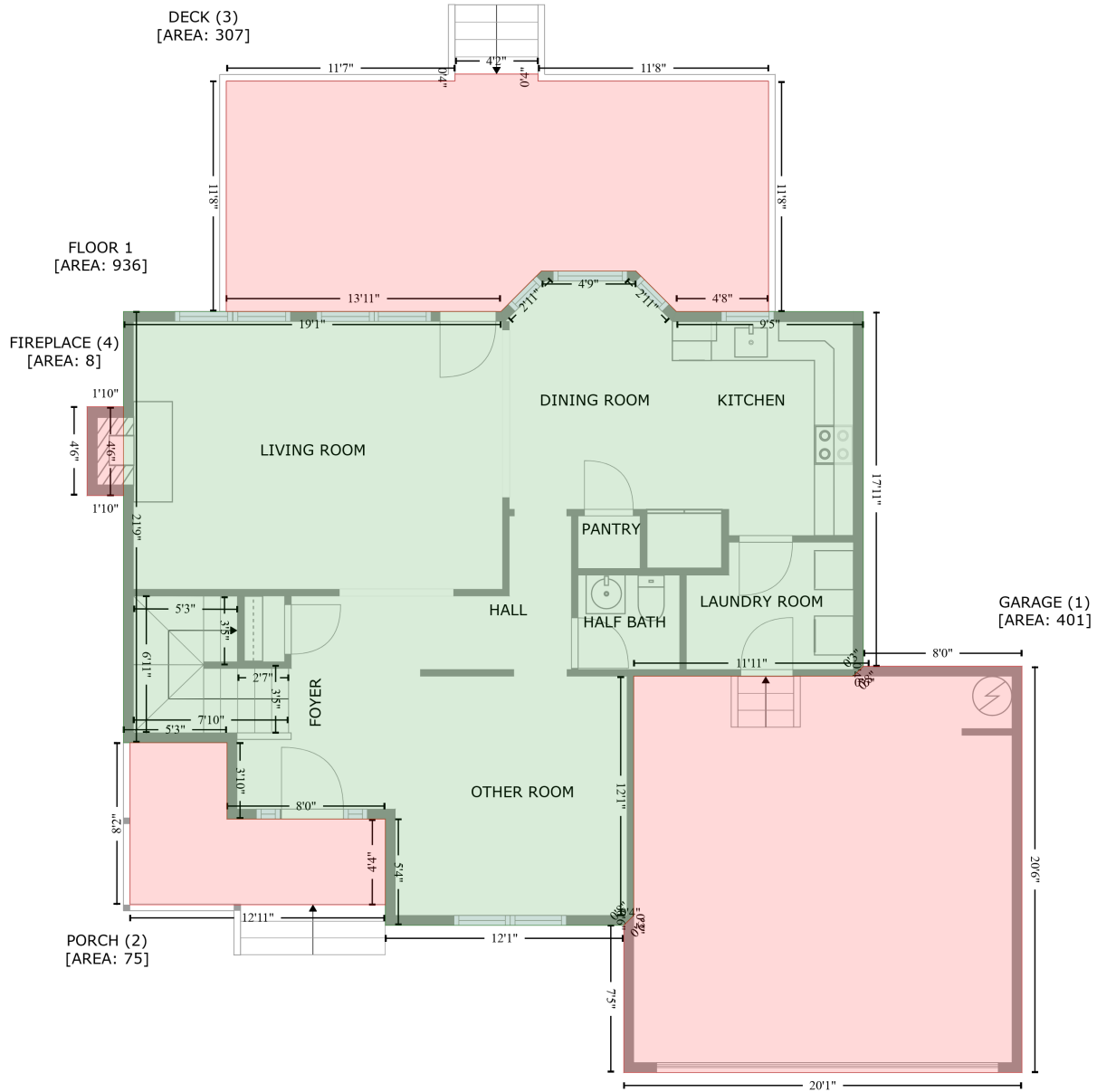


1810 Beaudet Lane, Apex, Wake County, North Carolina, United States, 27523

Gross Living Area: 2025 sq. ft



Space

Area (sq. ft)

Calculation Coordinate Polygon Area Algorithm using inches

FLOOR 1
(Living area)

936

$$\begin{aligned}
 & -((316 + 340.6) * (220.9 - 245.5) + (340.6 + 454) * (245.5 - 245.5) + (454 + 454) * (245.5 - 460.5) \\
 & + (454 + 451.9) * (460.5 - 462.5) + (451.9 + 448) * (462.5 - 466.5) + (448 + 314.7) * (466.5 - \\
 & 466.5) + (314.7 + 314.7) * (466.5 - 611.6) + (314.7 + 308.7) * (611.6 - 617.6) + (308.7 + 164.1) * \\
 & (617.6 - 617.6) + (164.1 + 164.1) * (617.6 - 553.2) + (164.1 + 68.1) * (553.2 - 553.2) + (68.1 + \\
 & 68.1) * (553.2 - 506.9) + (68.1 + 5.3) * (506.9 - 506.9) + (5.3 + 5.3) * (506.9 - 245.5) + (5.3 + \\
 & 234.2) * (245.5 - 245.5) + (234.2 + 258.8) * (245.5 - 220.9) + (258.8 + 316) * (220.9 - 220.9)) * \\
 & 0.5 * 0.00694
 \end{aligned}$$

1810 Beaudet Lane, Apex, Wake County, North Carolina, United States, 27523

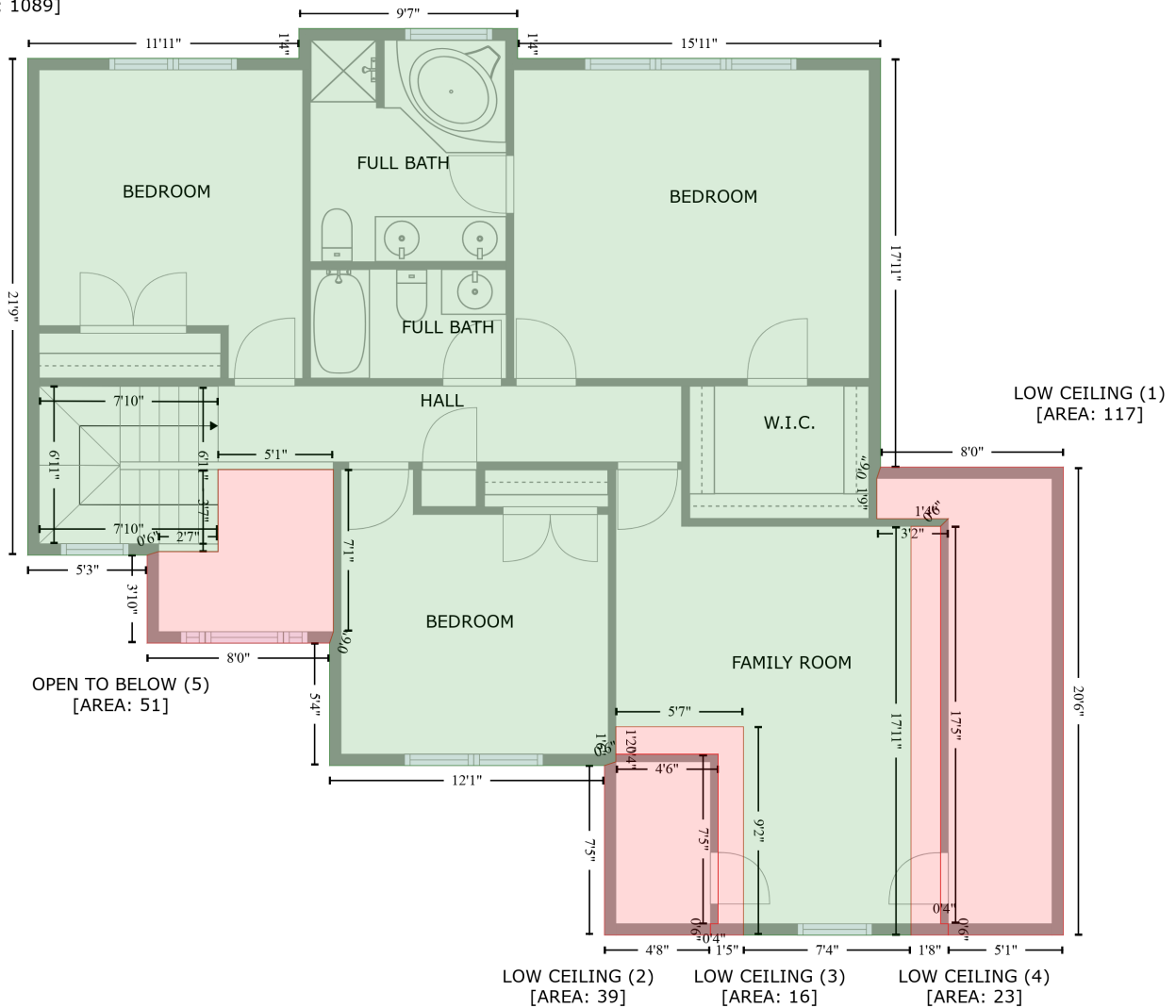
Gross Living Area: 2025 sq. ft

Space	Area (sq. ft)	Calculation <small>Coordinate Polygon Area Algorithm using inches</small>
GARAGE (Non-living area)	401	$-\left((550.2 + 550.2) * (460.5 - 706.8) + (550.2 + 308.7) * (706.8 - 706.8) + (308.7 + 308.7) * (706.8 - 617.6) + (308.7 + 314.7) * (617.6 - 611.6) + (314.7 + 314.7) * (611.6 - 466.5) + (314.7 + 448) * (466.5 - 466.5) + (448 + 454) * (466.5 - 460.5) + (454 + 550.2) * (460.5 - 460.5)\right) * 0.5 * 0.00694$
PORCH (Non-living area)	75	$-\left((68.1 + 68.1) * (506.9 - 553.2) + (68.1 + 164.1) * (553.2 - 553.2) + (164.1 + 164.1) * (553.2 - 605.2) + (164.1 + 9.2) * (605.2 - 605.2) + (9.2 + 9.3) * (605.2 - 506.9) + (9.3 + 68.1) * (506.9 - 506.9)\right) * 0.5 * 0.00694$
DECK (Non-living area)	307	$-\left((256.8 + 256.7) * (101.5 - 105.8) + (256.7 + 396.5) * (105.8 - 105.8) + (396.5 + 396.5) * (105.8 - 245.5) + (396.5 + 340.6) * (245.5 - 245.5) + (340.6 + 316) * (245.5 - 220.9) + (316 + 258.8) * (220.9 - 220.9) + (258.8 + 234.2) * (220.9 - 245.5) + (234.2 + 67.6) * (245.5 - 245.5) + (67.6 + 67.6) * (245.5 - 105.8) + (67.6 + 206.4) * (105.8 - 105.8) + (206.4 + 206.4) * (105.8 - 101.5) + (206.4 + 256.8) * (101.5 - 101.5)\right) * 0.5 * 0.00694$
FIREPLACE (Non-living area)	8	$-\left((5.3 + 5.3) * (303.2 - 357.1) + (5.3 + -16.7) * (357.1 - 357.1) + (-16.7 + -16.7) * (357.1 - 303.2) + (-16.7 + 5.3) * (303.2 - 303.2)\right) * 0.5 * 0.00694$

1810 Beaudet Lane, Apex, Wake County, North Carolina, United States, 27523

Gross Living Area: 2025 sq. ft

FLOOR 2
[AREA: 1089]



Space

Area (sq. ft)

Calculation Coordinate Polygon Area Algorithm using inches

FLOOR 2
(Living area)

1089

$$\begin{aligned}
 & -((263.1 + 263.1) * (229.8 - 245.5) + (263.1 + 454) * (245.5 - 245.5) + (454 + 454) * (245.5 - 460.5) \\
 & + (454 + 452) * (460.5 - 466.5) + (452 + 452) * (466.5 - 487.7) + (452 + 489.6) * (487.7 - 487.7) \\
 & + (489.6 + 485.6) * (487.7 - 491.7) + (485.6 + 470) * (491.7 - 491.7) + (470 + 470) * (491.7 - 706.8) \\
 & + (470 + 381.9) * (706.8 - 706.8) + (381.9 + 381.9) * (706.8 - 597.1) + (381.9 + 314.7) * (597.1 - 597.1) \\
 & + (314.7 + 314.7) * (597.1 - 615.6) + (314.7 + 308.7) * (615.6 - 617.6) + (308.7 + 164.1) * (617.6 - 617.6) \\
 & + (164.1 + 164.1) * (617.6 - 553.2) + (164.1 + 166.1) * (553.2 - 547.2) + (166.1 + 166.1) * (547.2 - 461.8) \\
 & + (166.1 + 105.4) * (461.8 - 461.8) + (105.4 + 105.5) * (461.8 - 505) + (105.5 + 74.1) * (505 - 505) \\
 & + (74.1 + 68.1) * (505 - 506.9) + (68.1 + 5.3) * (506.9 - 506.9) + (5.3 + 5.3) * (506.9 - 245.5) \\
 & + (5.3 + 148) * (245.5 - 245.5) + (148 + 148) * (245.5 - 229.8) + (148 + 263.1) * (229.8 - 229.8) \\
 & + 0.5 * 0.00694
 \end{aligned}$$

1810 Beaudet Lane, Apex, Wake County, North Carolina, United States, 27523

Gross Living Area: 2025 sq. ft

Space	Area (sq. ft)	Calculation <small>Coordinate Polygon Area Algorithm using inches</small>
LOW CEILING (Non-living area)	117	$-\left((550.2 + 550.2) * (460.5 - 706.8) + (550.2 + 489.6) * (706.8 - 706.8) + (489.6 + 489.6) * (706.8 - 700.8) + (489.6 + 485.6) * (700.8 - 700.8) + (485.6 + 485.6) * (700.8 - 491.7) + (485.6 + 489.6) * (491.7 - 487.7) + (489.6 + 452) * (487.7 - 487.7) + (452 + 452) * (487.7 - 466.5) + (452 + 454) * (466.5 - 460.5) + (454 + 550.2) * (460.5 - 460.5)\right) * 0.5 * 0.00694$
LOW CEILING (Non-living area)	39	$-\left((368.5 + 368.5) * (611.6 - 700.8) + (368.5 + 364.5) * (700.8 - 700.8) + (364.5 + 364.5) * (700.8 - 706.8) + (364.5 + 308.7) * (706.8 - 706.8) + (308.7 + 308.7) * (706.8 - 617.6) + (308.7 + 314.7) * (617.6 - 615.6) + (314.7 + 314.7) * (615.6 - 611.6) + (314.7 + 368.5) * (611.6 - 611.6)\right) * 0.5 * 0.00694$
LOW CEILING (Non-living area)	16	$-\left((381.9 + 381.9) * (597.1 - 706.8) + (381.9 + 364.5) * (706.8 - 706.8) + (364.5 + 364.5) * (706.8 - 700.8) + (364.5 + 368.5) * (700.8 - 700.8) + (368.5 + 368.5) * (700.8 - 611.6) + (368.5 + 314.7) * (611.6 - 611.6) + (314.7 + 314.7) * (611.6 - 597.1) + (314.7 + 381.9) * (597.1 - 597.1)\right) * 0.5 * 0.00694$
LOW CEILING (Non-living area)	23	$-\left((485.6 + 485.6) * (491.7 - 700.8) + (485.6 + 489.6) * (700.8 - 700.8) + (489.6 + 489.6) * (700.8 - 706.8) + (489.6 + 470) * (706.8 - 706.8) + (470 + 470) * (706.8 - 491.7) + (470 + 485.6) * (491.7 - 491.7)\right) * 0.5 * 0.00694$
OPEN TO BELOW (Non-living area)	51	$-\left((166.1 + 166.1) * (461.8 - 547.2) + (166.1 + 164.1) * (547.2 - 553.2) + (164.1 + 68.1) * (553.2 - 553.2) + (68.1 + 68.1) * (553.2 - 506.9) + (68.1 + 74.1) * (506.9 - 505) + (74.1 + 105.5) * (505 - 505) + (105.5 + 105.4) * (505 - 461.8) + (105.4 + 166.1) * (461.8 - 461.8)\right) * 0.5 * 0.00694$