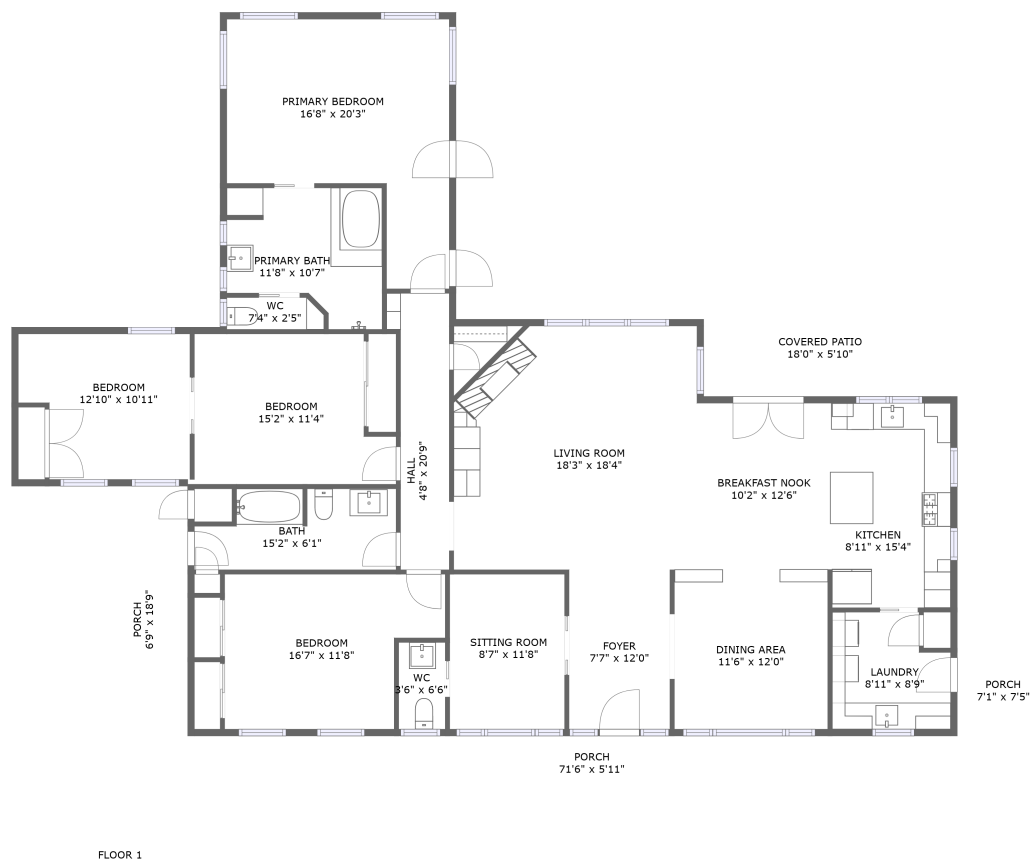




Home report


40770 Long Hollow Drive, Yosemite Lakes, Coarsegold, Madera County, California, United States, 93614





Property summary


**0**
Garages


**4**
Bedrooms

**2**
Bathrooms

**1**
Half baths

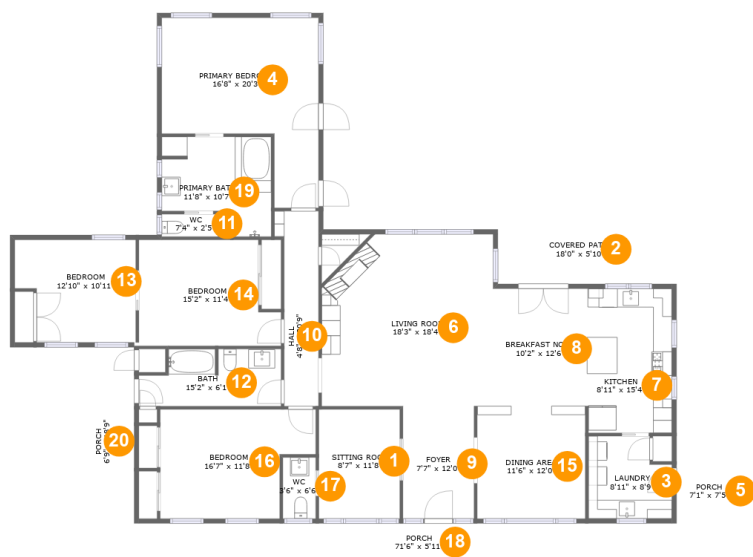
**1**
Floors

**2,251**
Gross living area sqft

**2,965**
Total sqft

Home report

40770 Long Hollow Drive, Yosemite Lakes, Coarsegold, Madera County, California, United States, 93614



Room dimensions

Floor 1 Total sqft: 2965 Living area: 2251

#		Dimensions	sqft	Counted as living area
1	Sitting Room	8'7" x 11'8"	100 sq. ft	Yes
2	Covered Patio	18'0" x 5'10"	104 sq. ft	No
3	Laundry	8'11" x 8'9"	71 sq. ft	Yes
4	Primary Bedroom	16'8" x 20'3"	243 sq. ft	Yes
5	Porch	7'1" x 7'5"	52 sq. ft	No
6	Living Room	18'3" x 18'4"	318 sq. ft	Yes
7	Kitchen	8'11" x 15'4"	136 sq. ft	Yes
8	Breakfast Nook	10'2" x 12'6"	127 sq. ft	Yes
9	Foyer	7'7" x 12'0"	91 sq. ft	Yes
10	Hall	4'8" x 20'9"	79 sq. ft	Yes
11	WC	7'4" x 2'5"	17 sq. ft	Yes

Home report

40770 Long Hollow Drive, Yosemite Lakes, Coarsegold, Madera County, California, United States, 93614

#		Dimensions	sqft	Counted as living area
12	Bath	15'2" x 6'1"	82 sq. ft	Yes
13	Bedroom	12'10" x 10'11"	127 sq. ft	Yes
14	Bedroom	15'2" x 11'4"	152 sq. ft	Yes
15	Dining Area	11'6" x 12'0"	138 sq. ft	Yes
16	Bedroom	16'7" x 11'8"	166 sq. ft	Yes
17	WC	3'6" x 6'6"	23 sq. ft	Yes
18	Porch	71'6" x 5'11"	424 sq. ft	No
19	Primary Bath	11'8" x 10'7"	103 sq. ft	Yes
20	Porch	6'9" x 18'9"	126 sq. ft	No

1 Floor 1 - Sitting Room



Dimensions: 8'7" x 11'8"
Area: 100 sq. ft
Counted as living area: Yes

Heated: Yes
Finished: Yes
Enclosed: Yes
Contiguous: Yes
Permitted: Yes
Wet space: No
Addition: No
Conversion: No

2 Floor 1 - Covered Patio



Dimensions: 18'0" x 5'10"
Area: 104 sq. ft
Counted as living area: No

Heated: No
Finished: Yes
Enclosed: No
Contiguous: Yes
Permitted: Yes
Wet space: No
Addition: No
Conversion: No

Home report

40770 Long Hollow Drive, Yosemite Lakes, Coarsegold, Madera County, California, United States, 93614

3 Floor 1 - Laundry



Dimensions: 8'11" x 8'9"
Area: 71 sq. ft
Counted as living area: Yes

Heated: Yes
Finished: Yes
Enclosed: Yes
Contiguous: Yes
Permitted: Yes
Wet space: No
Addition: No
Conversion: No

4 Floor 1 - Primary Bedroom



Dimensions: 16'8" x 20'3"
Area: 243 sq. ft
Counted as living area: Yes

Heated: Yes
Finished: Yes
Enclosed: Yes
Contiguous: Yes
Permitted: Yes
Wet space: No
Addition: No
Conversion: No

5 Floor 1 - Porch



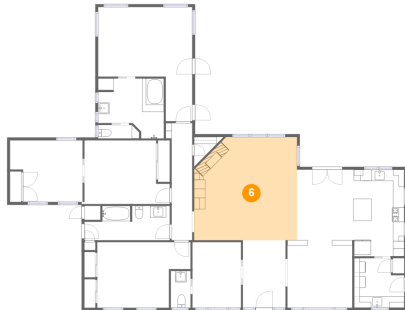
Dimensions: 7'1" x 7'5"
Area: 52 sq. ft
Counted as living area: No

Heated: No
Finished: Yes
Enclosed: No
Contiguous: Yes
Permitted: Yes
Wet space: No
Addition: No
Conversion: No

Home report

40770 Long Hollow Drive, Yosemite Lakes, Coarsegold, Madera County, California, United States, 93614

6 Floor 1 - Living Room



Dimensions: 18'3" x 18'4"
Area: 318 sq. ft
Counted as living area: Yes

Heated: Yes
Finished: Yes
Enclosed: Yes
Contiguous: Yes
Permitted: Yes
Wet space: No
Addition: No
Conversion: No

7 Floor 1 - Kitchen



Dimensions: 8'11" x 15'4"
Area: 136 sq. ft
Counted as living area: Yes

Heated: Yes
Finished: Yes
Enclosed: Yes
Contiguous: Yes
Permitted: Yes
Wet space: No
Addition: No
Conversion: No

8 Floor 1 - Breakfast Nook



Dimensions: 10'2" x 12'6"
Area: 127 sq. ft
Counted as living area: Yes

Heated: Yes
Finished: Yes
Enclosed: Yes
Contiguous: Yes
Permitted: Yes
Wet space: No
Addition: No
Conversion: No

Home report

40770 Long Hollow Drive, Yosemite Lakes, Coarsegold, Madera County, California, United States, 93614

9 Floor 1 - Foyer



Dimensions: 7'7" x 12'0"
Area: 91 sq. ft
Counted as living area: Yes

Heated: Yes
Finished: Yes
Enclosed: Yes
Contiguous: Yes
Permitted: Yes
Wet space: No
Addition: No
Conversion: No

10 Floor 1 - Hall



Dimensions: 4'8" x 20'9"
Area: 79 sq. ft
Counted as living area: Yes

Heated: Yes
Finished: Yes
Enclosed: Yes
Contiguous: Yes
Permitted: Yes
Wet space: No
Addition: No
Conversion: No

11 Floor 1 - WC



Dimensions: 7'4" x 2'5"
Area: 17 sq. ft
Counted as living area: Yes

Heated: Yes
Finished: Yes
Enclosed: Yes
Contiguous: Yes
Permitted: Yes
Wet space: Yes
Addition: No
Conversion: No

Home report

40770 Long Hollow Drive, Yosemite Lakes, Coarsegold, Madera County, California, United States, 93614

12 Floor 1 - Bath



Dimensions: 15'2" x 6'1"
Area: 82 sq. ft
Counted as living area: Yes

Heated: Yes
Finished: Yes
Enclosed: Yes
Contiguous: Yes
Permitted: Yes
Wet space: Yes
Addition: No
Conversion: No

13 Floor 1 - Bedroom



Dimensions: 12'10" x 10'11"
Area: 127 sq. ft
Counted as living area: Yes

Heated: Yes
Finished: Yes
Enclosed: Yes
Contiguous: Yes
Permitted: Yes
Wet space: No
Addition: No
Conversion: No

14 Floor 1 - Bedroom



Dimensions: 15'2" x 11'4"
Area: 152 sq. ft
Counted as living area: Yes

Heated: Yes
Finished: Yes
Enclosed: Yes
Contiguous: Yes
Permitted: Yes
Wet space: No
Addition: No
Conversion: No

Home report

40770 Long Hollow Drive, Yosemite Lakes, Coarsegold, Madera County, California, United States, 93614

15 Floor 1 - Dining Area



Dimensions: 11'6" x 12'0"
Area: 138 sq. ft
Counted as living area: Yes

Heated: Yes
Finished: Yes
Enclosed: Yes
Contiguous: Yes
Permitted: Yes
Wet space: No
Addition: No
Conversion: No

16 Floor 1 - Bedroom



Dimensions: 16'7" x 11'8"
Area: 166 sq. ft
Counted as living area: Yes

Heated: Yes
Finished: Yes
Enclosed: Yes
Contiguous: Yes
Permitted: Yes
Wet space: No
Addition: No
Conversion: No

17 Floor 1 - WC



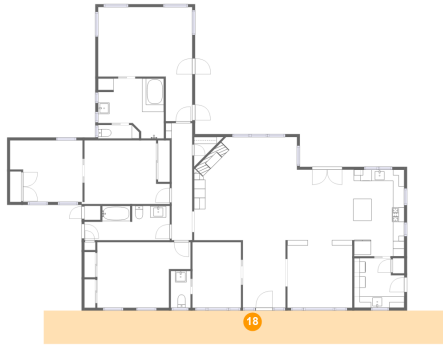
Dimensions: 3'6" x 6'6"
Area: 23 sq. ft
Counted as living area: Yes

Heated: Yes
Finished: Yes
Enclosed: Yes
Contiguous: Yes
Permitted: Yes
Wet space: Yes
Addition: No
Conversion: No

Home report

40770 Long Hollow Drive, Yosemite Lakes, Coarsegold, Madera County, California, United States, 93614

18 Floor 1 - Porch



Dimensions: 71'6" x 5'11"
Area: 424 sq. ft
Counted as living area: No

Heated: No
Finished: Yes
Enclosed: No
Contiguous: Yes
Permitted: Yes
Wet space: No
Addition: No
Conversion: No

19 Floor 1 - Primary Bath



Dimensions: 11'8" x 10'7"
Area: 103 sq. ft
Counted as living area: Yes

Heated: Yes
Finished: Yes
Enclosed: Yes
Contiguous: Yes
Permitted: Yes
Wet space: Yes
Addition: No
Conversion: No

20 Floor 1 - Porch



Dimensions: 6'9" x 18'9"
Area: 126 sq. ft
Counted as living area: No

Heated: No
Finished: Yes
Enclosed: No
Contiguous: Yes
Permitted: Yes
Wet space: No
Addition: No
Conversion: No