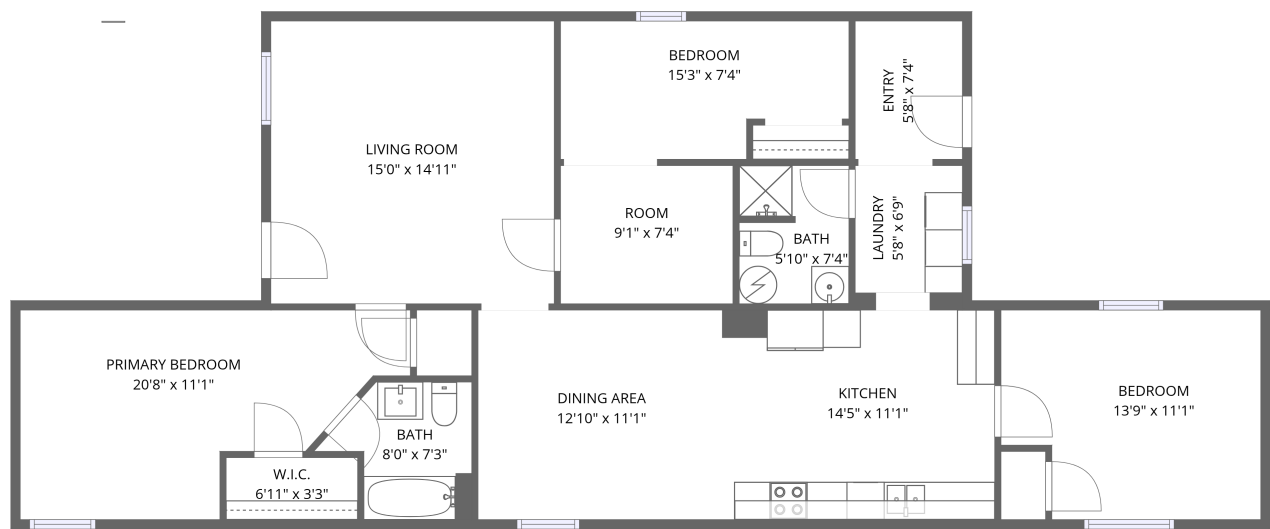


Home data report

637 W South St,Shelbyville,IN,US



1st floor


Total Area: 1286 sq. ft


1st Floor: 1286 sq. ft

Excluded: Walls: 93 sq. ft

Property summary

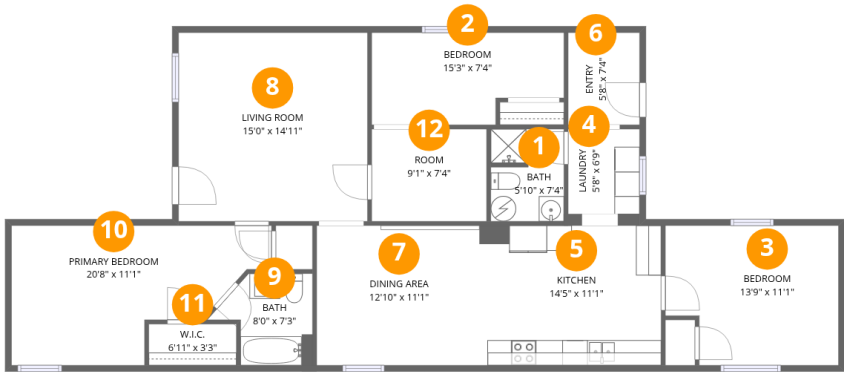
 1 Floors

 3 Bedrooms

 2 Bathrooms

Home data report

637 W South St,Shelbyville,IN,US



Room dimensions

Floor 1 Total:1286sqft Excluded: 0sqft

#		Dimensions	sqft	Counted as living area
1	Bath	5'10" x 7'4"	41 sq. ft	Yes
2	Bedroom	15'3" x 7'4"	100 sq. ft	Yes
3	Bedroom	13'9" x 11'1"	142 sq. ft	Yes
4	Laundry	5'8" x 6'9"	38 sq. ft	Yes
5	Kitchen	14'5" x 11'1"	160 sq. ft	Yes
6	Entry	5'8" x 7'4"	41 sq. ft	Yes
7	Dining Area	12'10" x 11'1"	143 sq. ft	Yes
8	Living Room	15'0" x 14'11"	224 sq. ft	Yes
9	Bath	8'0" x 7'3"	45 sq. ft	Yes
10	Primary Bedroom	20'8" x 11'1"	177 sq. ft	Yes
11	W.I.C.	6'11" x 3'3"	23 sq. ft	Yes

Home data report

637 W South St,Shelbyville,IN,US

#		Dimensions	sqft	Counted as living area
12	Room	9'1" x 7'4"	67 sq. ft	Yes

1 Floor 1 - Bath



Dimensions: 5'10" x 7'4"
Area: 41 sq. ft
Counted as living area: Yes

Heated: Yes
Finished: Yes
Enclosed: Yes
Contiguous: Yes
Permitted: Yes
Wet space: Yes
Addition: No
Conversion: No

2 Floor 1 - Bedroom



Dimensions: 15'3" x 7'4"
Area: 100 sq. ft
Counted as living area: Yes

Heated: Yes
Finished: Yes
Enclosed: Yes
Contiguous: Yes
Permitted: Yes
Wet space: No
Addition: No
Conversion: No

3 Floor 1 - Bedroom



Dimensions: 13'9" x 11'1"
Area: 142 sq. ft
Counted as living area: Yes

Heated: Yes
Finished: Yes
Enclosed: Yes
Contiguous: Yes
Permitted: Yes
Wet space: No
Addition: No
Conversion: No

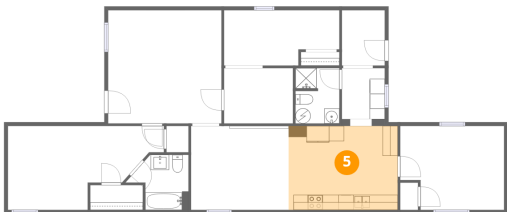
4 Floor 1 - Laundry



Dimensions: 5'8" x 6'9"
Area: 38 sq. ft
Counted as living area: Yes

Heated: Yes
Finished: Yes
Enclosed: Yes
Contiguous: Yes
Permitted: Yes
Wet space: No
Addition: No
Conversion: No

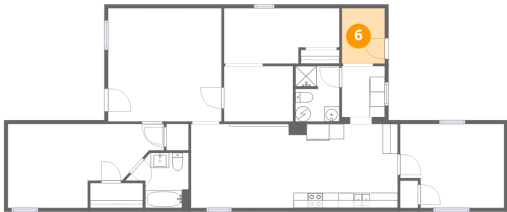
5 Floor 1 - Kitchen



Dimensions: 14'5" x 11'1"
Area: 160 sq. ft
Counted as living area: Yes

Heated: Yes
Finished: Yes
Enclosed: Yes
Contiguous: Yes
Permitted: Yes
Wet space: No
Addition: No
Conversion: No

6 Floor 1 - Entry



Dimensions: 5'8" x 7'4"
Area: 41 sq. ft
Counted as living area: Yes

Heated: Yes
Finished: Yes
Enclosed: Yes
Contiguous: Yes
Permitted: Yes
Wet space: No
Addition: No
Conversion: No

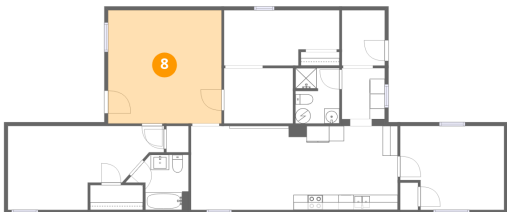
7 Floor 1 - Dining Area



Dimensions: 12'10" x 11'1"
Area: 143 sq. ft
Counted as living area: Yes

Heated: Yes
Finished: Yes
Enclosed: Yes
Contiguous: Yes
Permitted: Yes
Wet space: No
Addition: No
Conversion: No

8 Floor 1 - Living Room



Dimensions: 15'0" x 14'11"
Area: 224 sq. ft
Counted as living area: Yes

Heated: Yes
Finished: Yes
Enclosed: Yes
Contiguous: Yes
Permitted: Yes
Wet space: No
Addition: No
Conversion: No

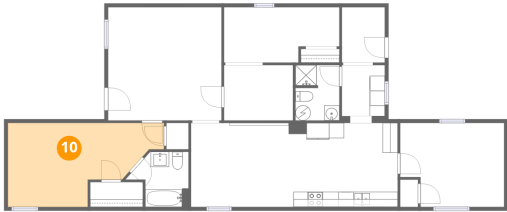
9 Floor 1 - Bath



Dimensions: 8'0" x 7'3"
Area: 45 sq. ft
Counted as living area: Yes

Heated: Yes
Finished: Yes
Enclosed: Yes
Contiguous: Yes
Permitted: Yes
Wet space: Yes
Addition: No
Conversion: No

10 Floor 1 - Primary Bedroom



Dimensions: 20'8" x 11'1"
Area: 177 sq. ft
Counted as living area: Yes

Heated: Yes
Finished: Yes
Enclosed: Yes
Contiguous: Yes
Permitted: Yes
Wet space: No
Addition: No
Conversion: No

11 Floor 1 - W.I.C.



Dimensions: 6'11" x 3'3"
Area: 23 sq. ft
Counted as living area: Yes

Heated: Yes
Finished: Yes
Enclosed: Yes
Contiguous: Yes
Permitted: Yes
Wet space: No
Addition: No
Conversion: No

12 Floor 1 - Room



Dimensions: 9'1" x 7'4"
Area: 67 sq. ft
Counted as living area: Yes

Heated: Yes
Finished: Yes
Enclosed: Yes
Contiguous: Yes
Permitted: Yes
Wet space: No
Addition: No
Conversion: No