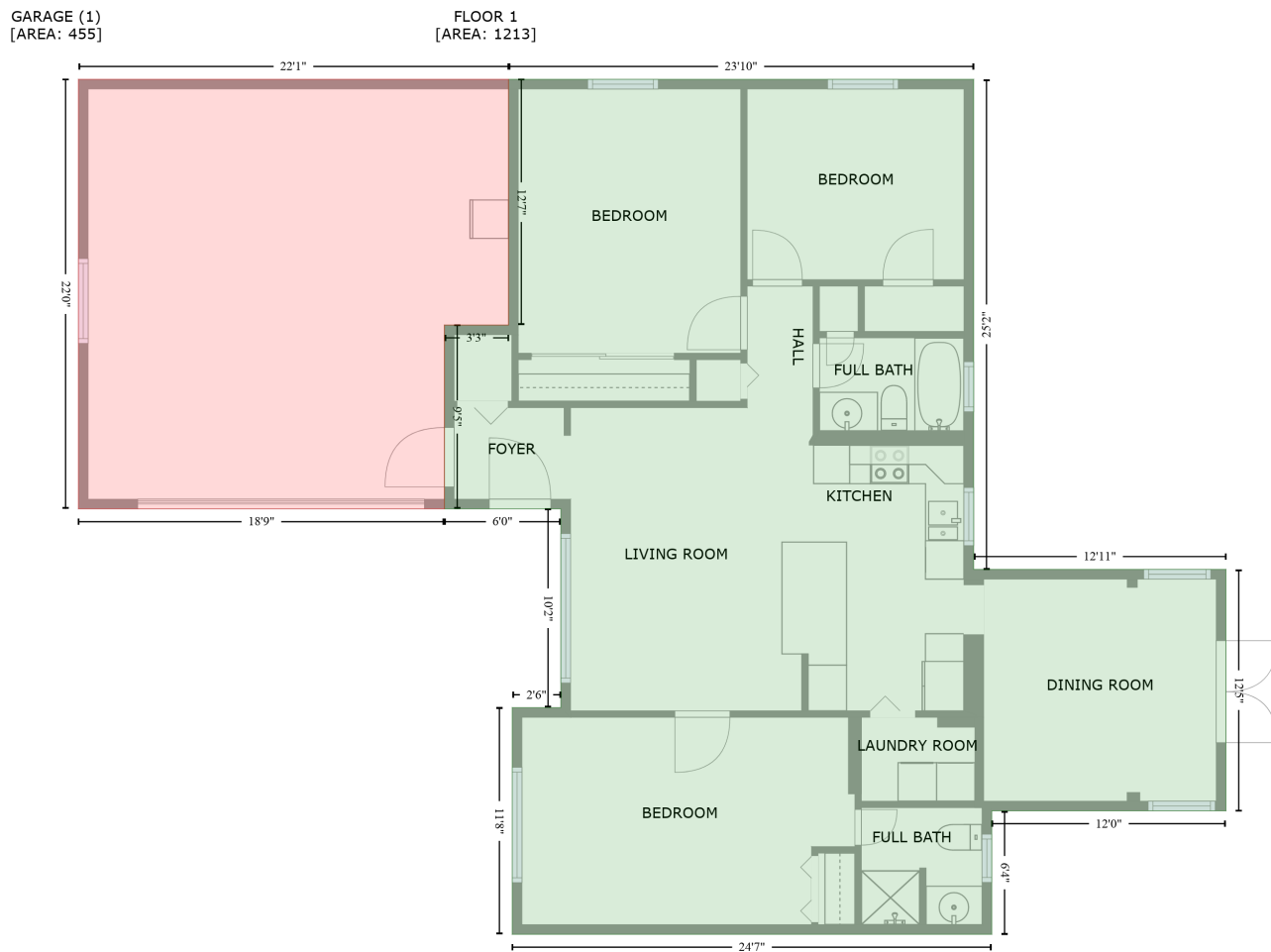


865 Bruce Avenue, 700 Island Way, Clearwater Beach, Pinellas County, Florida, United States, 33767

Gross Living Area: 1213 sq. ft



Space	Area (sq. ft)	Calculation <small>Coordinate Polygon Area Algorithm using inches</small>
FLOOR 1 (Living area)	1213	$ \begin{aligned} & -((548.4 + 548.4) * (-1.3 - 300.3) + (548.4 + 703.6) * (300.3 - 300.3) + (703.6 + 703.6) * (300.3 - 448.9) \\ & + (703.6 + 559.5) * (448.9 - 448.9) + (559.5 + 559.5) * (448.9 - 524.9) + (559.5 + 264.5) * \\ & (524.9 - 524.9) + (264.5 + 264.5) * (524.9 - 385.3) + (264.5 + 294.4) * (385.3 - 385.3) + (294.4 + \\ & 294.4) * (385.3 - 263.1) + (294.4 + 222.7) * (263.1 - 263.1) + (222.7 + 222.7) * (263.1 - 149.9) + \\ & (222.7 + 262.2) * (149.9 - 149.9) + (262.2 + 262.2) * (149.9 - -1.3) + (262.2 + 548.4) * (-1.3 - \\ & -1.3)) * 0.5 * 0.00694 \end{aligned} $
GARAGE (Non-living area)	455	$ \begin{aligned} & -((262.2 + 262.2) * (-1.3 - 149.9) + (262.2 + 222.7) * (149.9 - 149.9) + (222.7 + 222.7) * (149.9 - 263.1) \\ & + (222.7 + -2.5) * (263.1 - 263.1) + (-2.5 + -2.5) * (263.1 - -1.3) + (-2.5 + 262.2) * (-1.3 - \\ & -1.3)) * 0.5 * 0.00694 \end{aligned} $