




Property summary




0
Garages



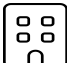
3
Bedrooms




1
Bathrooms




1
Half baths



2
Floors

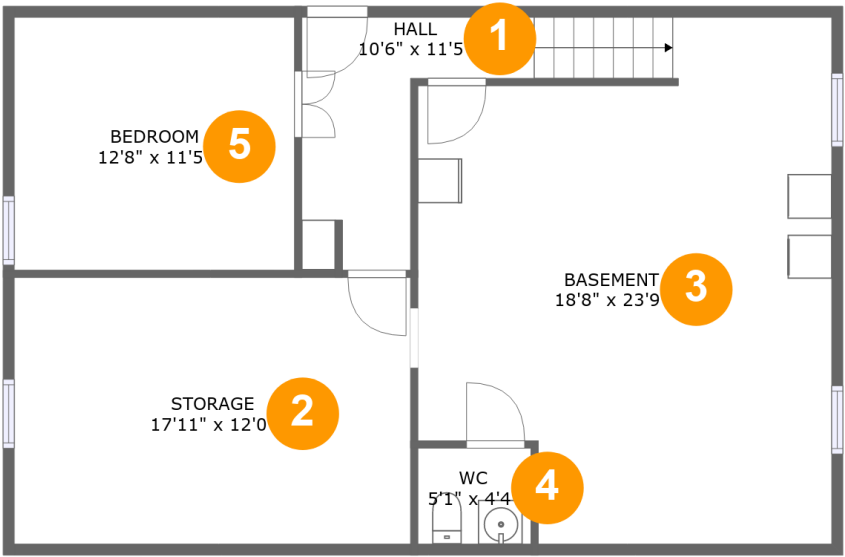


940
Gross living
area sqft



2,383
Total sqft

1723 Victoria Street Northwest, Salem, Salem city,
Virginia, United States, 24153



Room dimensions

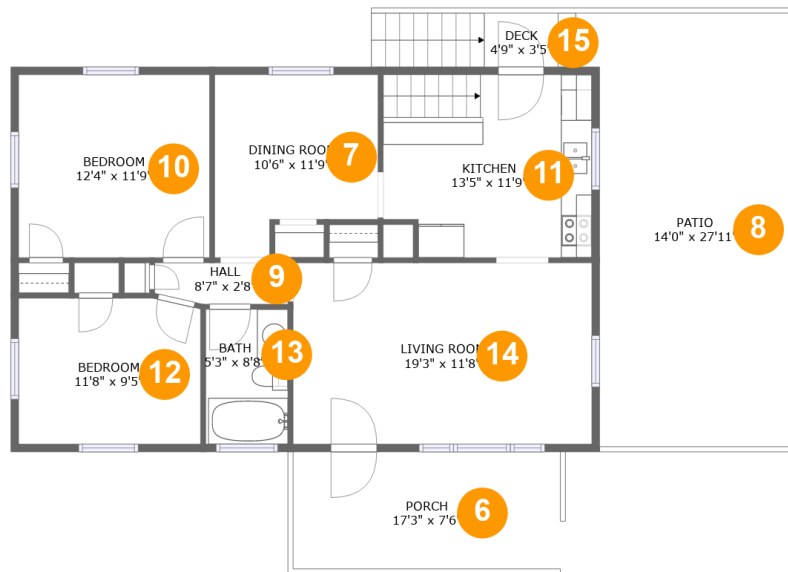
Floor 1

Total sqft: 941

Living area: 0

#		Dimensions	sqft	Counted as living area
1	Hall	10'6" x 11'5"	71 sq. ft	No
2	Storage	17'11" x 12'0"	216 sq. ft	No
3	Basement	18'8" x 23'9"	401 sq. ft	No
4	WC	5'1" x 4'4"	22 sq. ft	No
5	Bedroom	12'8" x 11'5"	145 sq. ft	No

**1723 Victoria Street Northwest, Salem, Salem city,
Virginia, United States, 24153**



Room dimensions

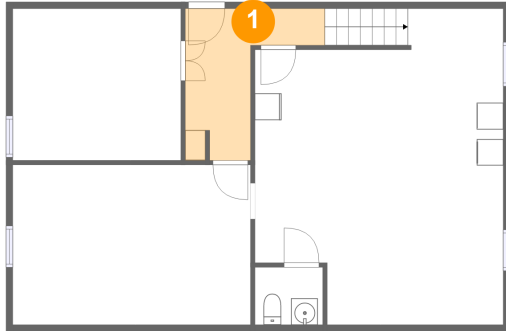
Floor 2

Total sqft: 1442 Living area: 940

#		Dimensions	sqft	Counted as living area
6	Porch	17'3" x 7'6"	130 sq. ft	No
7	Dining Room	10'6" x 11'9"	107 sq. ft	Yes
8	Patio	14'0" x 27'11"	355 sq. ft	No
9	Hall	8'7" x 2'8"	22 sq. ft	Yes
10	Bedroom	12'4" x 11'9"	145 sq. ft	Yes
11	Kitchen	13'5" x 11'9"	153 sq. ft	Yes
12	Bedroom	11'8" x 9'5"	109 sq. ft	Yes
13	Bath	5'3" x 8'8"	46 sq. ft	Yes
14	Living Room	19'3" x 11'8"	225 sq. ft	Yes
15	Deck	4'9" x 3'5"	17 sq. ft	No

**1723 Victoria Street Northwest, Salem, Salem city,
Virginia, United States, 24153**

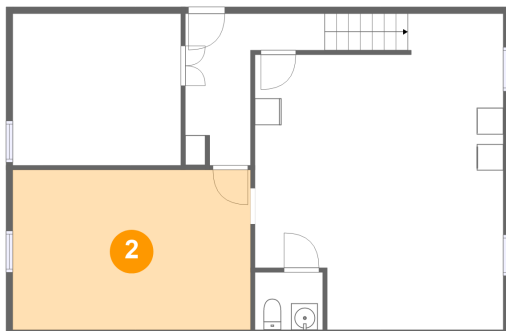
1 Floor 1 - Hall



Dimensions: 10'6" x 11'5"
Area: 71 sq. ft
Counted as living area: No

Heated: Yes
Finished: Yes
Enclosed: Yes
Contiguous: No
Permitted: Yes
Wet space: No
Addition: No
Conversion: No

2 Floor 1 - Storage

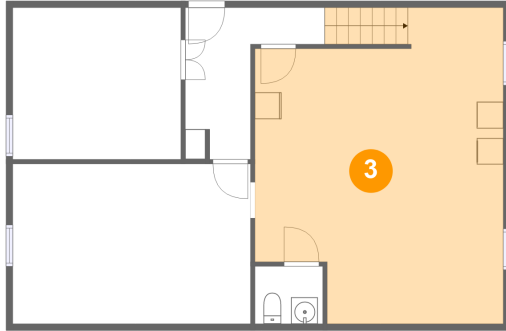


Dimensions: 17'11" x 12'0"
Area: 216 sq. ft
Counted as living area: No

Heated: No
Finished: No
Enclosed: No
Contiguous: Yes
Permitted: Yes
Wet space: No
Addition: No
Conversion: No

1723 Victoria Street Northwest, Salem, Salem city,
Virginia, United States, 24153

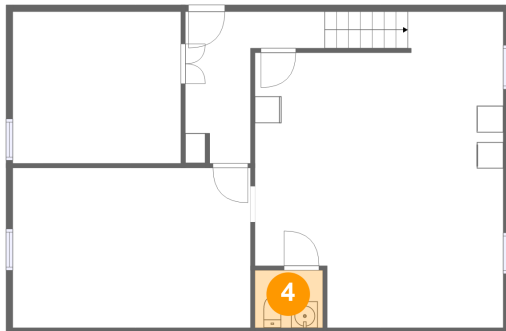
3 Floor 1 - Basement



Dimensions: 18'8" x 23'9"
Area: 401 sq. ft
Counted as living area: No

Heated: Yes
Finished: No
Enclosed: Yes
Contiguous: Yes
Permitted: Yes
Wet space: No
Addition: No
Conversion: No

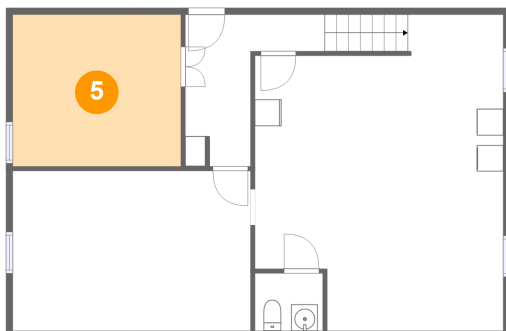
4 Floor 1 - WC



Dimensions: 5'1" x 4'4"
Area: 22 sq. ft
Counted as living area: No

Heated: Yes
Finished: Yes
Enclosed: Yes
Contiguous: No
Permitted: Yes
Wet space: Yes
Addition: No
Conversion: No

5 Floor 1 - Bedroom

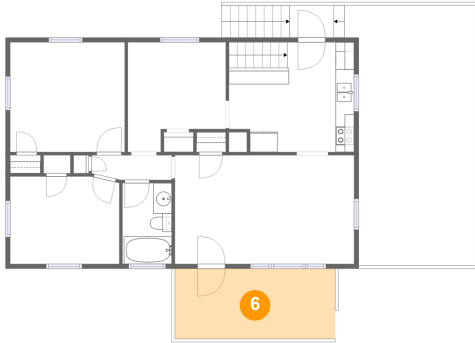


Dimensions: 12'8" x 11'5"
Area: 145 sq. ft
Counted as living area: No

Heated: Yes
Finished: Yes
Enclosed: Yes
Contiguous: No
Permitted: Yes
Wet space: No
Addition: No
Conversion: No

**1723 Victoria Street Northwest, Salem, Salem city,
Virginia, United States, 24153**

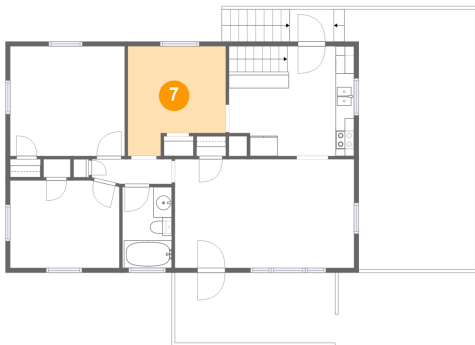
6 Floor 2 - Porch



Dimensions: 17'3" x 7'6"
Area: 130 sq. ft
Counted as living area: No

Heated: No
Finished: Yes
Enclosed: No
Contiguous: Yes
Permitted: Yes
Wet space: No
Addition: No
Conversion: No

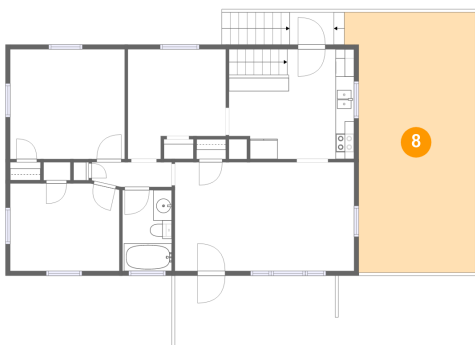
7 Floor 2 - Dining Room



Dimensions: 10'6" x 11'9"
Area: 107 sq. ft
Counted as living area: Yes

Heated: Yes
Finished: Yes
Enclosed: Yes
Contiguous: Yes
Permitted: Yes
Wet space: No
Addition: No
Conversion: No

8 Floor 2 - Patio

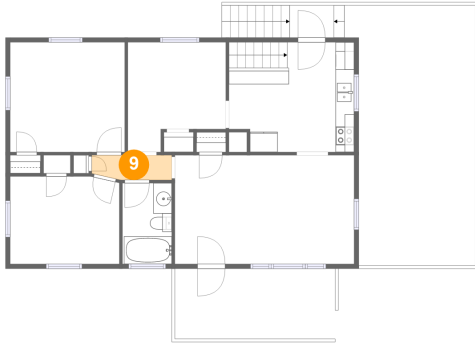


Dimensions: 14'0" x 27'11"
Area: 355 sq. ft
Counted as living area: No

Heated: No
Finished: Yes
Enclosed: No
Contiguous: Yes
Permitted: Yes
Wet space: No
Addition: No
Conversion: No

**1723 Victoria Street Northwest, Salem, Salem city,
Virginia, United States, 24153**

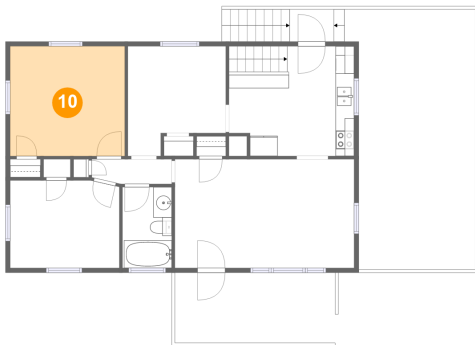
9 Floor 2 - Hall



Dimensions: 8'7" x 2'8"
Area: 22 sq. ft
Counted as living area: Yes

Heated: Yes
Finished: Yes
Enclosed: Yes
Contiguous: Yes
Permitted: Yes
Wet space: No
Addition: No
Conversion: No

10 Floor 2 - Bedroom



Dimensions: 12'4" x 11'9"
Area: 145 sq. ft
Counted as living area: Yes

Heated: Yes
Finished: Yes
Enclosed: Yes
Contiguous: Yes
Permitted: Yes
Wet space: No
Addition: No
Conversion: No

11 Floor 2 - Kitchen



Dimensions: 13'5" x 11'9"
Area: 153 sq. ft
Counted as living area: Yes

Heated: Yes
Finished: Yes
Enclosed: Yes
Contiguous: Yes
Permitted: Yes
Wet space: No
Addition: No
Conversion: No

**1723 Victoria Street Northwest, Salem, Salem city,
Virginia, United States, 24153**

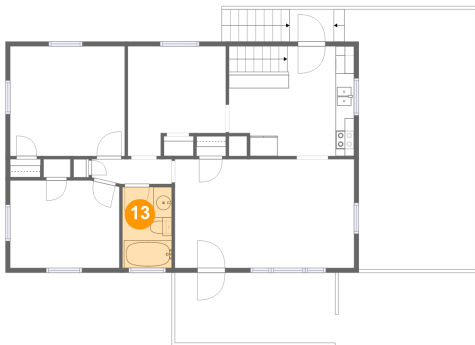
12 Floor 2 - Bedroom



Dimensions: 11'8" x 9'5"
Area: 109 sq. ft
Counted as living area: Yes

Heated: Yes
Finished: Yes
Enclosed: Yes
Contiguous: Yes
Permitted: Yes
Wet space: No
Addition: No
Conversion: No

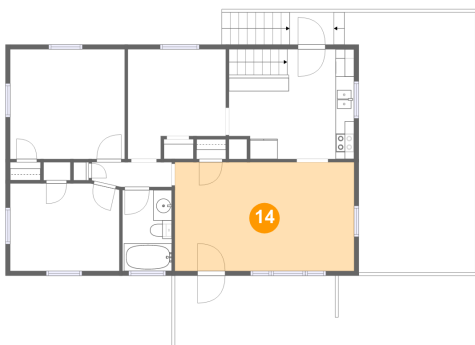
13 Floor 2 - Bath



Dimensions: 5'3" x 8'8"
Area: 46 sq. ft
Counted as living area: Yes

Heated: Yes
Finished: Yes
Enclosed: Yes
Contiguous: Yes
Permitted: Yes
Wet space: Yes
Addition: No
Conversion: No

14 Floor 2 - Living Room

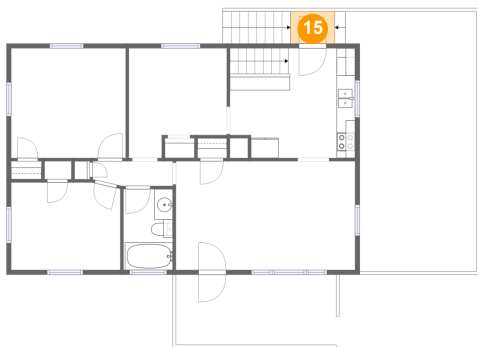


Dimensions: 19'3" x 11'8"
Area: 225 sq. ft
Counted as living area: Yes

Heated: Yes
Finished: Yes
Enclosed: Yes
Contiguous: Yes
Permitted: Yes
Wet space: No
Addition: No
Conversion: No

**1723 Victoria Street Northwest, Salem, Salem city,
Virginia, United States, 24153**

15 Floor 2 - Deck



Dimensions: 4'9" x 3'5"

Area: 17 sq. ft

Counted as living area: No

Heated: No

Finished: Yes

Enclosed: No

Contiguous: Yes

Permitted: Yes

Wet space: No

Addition: No

Conversion: No