

Home report

4362 Fontaine Circle, Windsor West, Cave Spring, Roanoke,
Roanoke County, Virginia, United States, 24018



Total Area: 1722 sq. ft

Floor 1: 0 sq. ft, Floor 2: 1722 sq. ft, Floor 3: 0 sq. ft

Excluded: Utility 596 sq. ft, Room Electrical 136 sq. ft, Recreationroom 645 sq. ft, Outdoor
Patio 517 sq. ft, Garage 353 sq. ft, Outdoor Porch 17 sq. ft, Low Ceiling 1916 sq. ft

Property summary

 **3** Floors

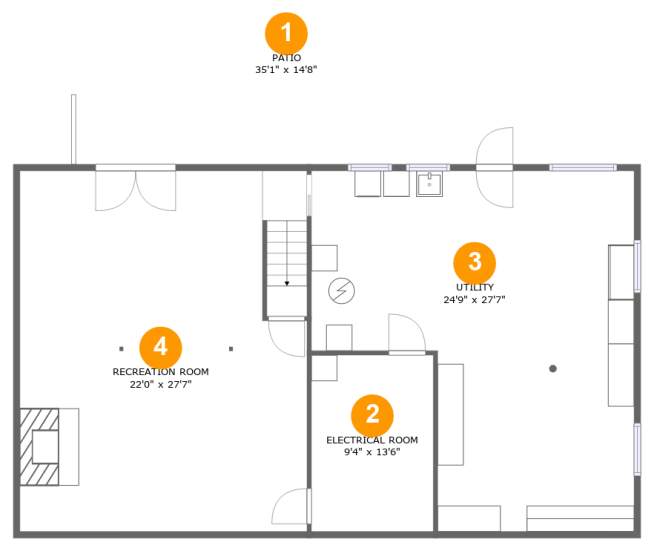
 **3** Bedrooms

 **2** Bathrooms

 **1** Garages

Home report

4362 Fontaine Circle, Windsor West, Cave Spring, Roanoke,
Roanoke County, Virginia, United States, 24018



Room dimensions

Floor 1 Total:0sqft Excluded: 1894sqft

#		Max Dimensions	sqft	Included
1	Patio	35'1" x 14'8"	517 sq. ft	No
2	Electrical Room	9'4" x 13'6"	126 sq. ft	No
3	Utility	24'9" x 27'7"	549 sq. ft	No
4	Recreation Room	22'0" x 27'7"	604 sq. ft	No

Home report

4362 Fontaine Circle, Windsor West, Cave Spring, Roanoke, Roanoke County, Virginia, United States, 24018



Room dimensions

Floor 2 Total:1722sqft Excluded: 370sqft

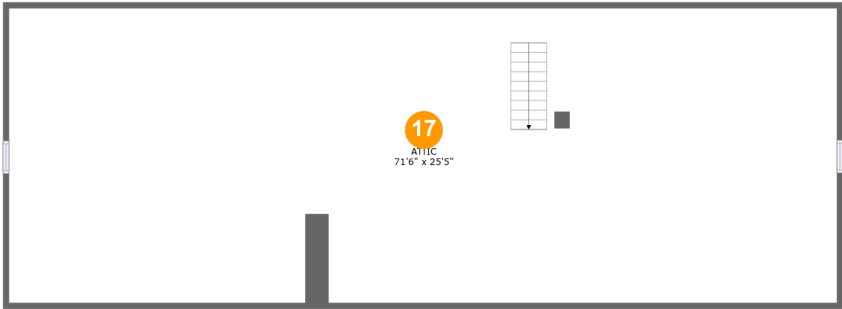
#		Max Dimensions	sqft	Included
5	Bath	4'3" x 10'6"	44 sq. ft	Yes
6	Bath	6'11" x 10'6"	59 sq. ft	Yes
7	Dining Area	7'10" x 13'8"	107 sq. ft	Yes
8	Bedroom	10'4" x 13'8"	121 sq. ft	Yes
9	Hall	16'8" x 2'10"	81 sq. ft	Yes
10	Kitchen	10'3" x 13'8"	140 sq. ft	Yes
11	Garage	11'10" x 27'7"	327 sq. ft	No
12	Family Room	12'3" x 27'7"	339 sq. ft	Yes
13	Porch	4'9" x 3'6"	17 sq. ft	No
14	Bedroom	15'1" x 13'8"	172 sq. ft	Yes
15	Primary Bedroom	13'0" x 13'8"	172 sq. ft	Yes

Home report

4362 Fontaine Circle, Windsor West, Cave Spring, Roanoke,
Roanoke County, Virginia, United States, 24018

#		Max Dimensions	sqft	Included
16	Living Room	20'6" x 13'8"	279 sq. ft	Yes

4362 Fontaine Circle, Windsor West, Cave Spring, Roanoke,
Roanoke County, Virginia, United States, 24018



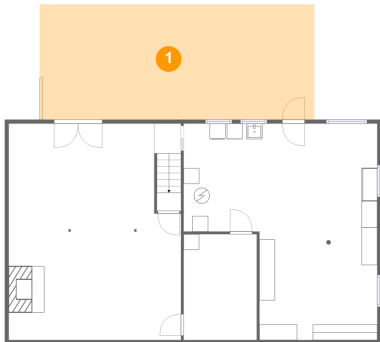
Room dimensions

Floor 3 Total:0sqft Excluded: 1916sqft

#		Max Dimensions	sqft	Included
17	Attic	71'6" x 25'5"	1818 sq. ft	No

4362 Fontaine Circle, Windsor West, Cave Spring, Roanoke,
Roanoke County, Virginia, United States, 24018

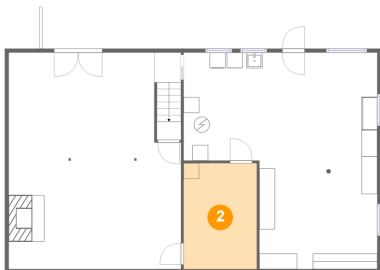
1 Floor 1 - Patio



Max Dimensions: 35'1" x 14'8"
Calculated Area: 517 sq. ft
Included: No

Heated: No
Finished: Yes
Enclosed: No
Contiguous: Yes
Permitted: Yes
Wet space: No
Addition: No
Conversion: No

2 Floor 1 - Electrical Room

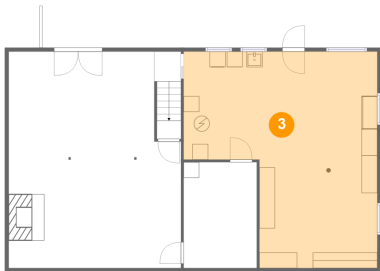


Max Dimensions: 9'4" x 13'6"
Calculated Area: 126 sq. ft
Included: No

Heated: No
Finished: No
Enclosed: Yes
Contiguous: Yes
Permitted: Yes
Wet space: No
Addition: No
Conversion: No

4362 Fontaine Circle, Windsor West, Cave Spring, Roanoke,
Roanoke County, Virginia, United States, 24018

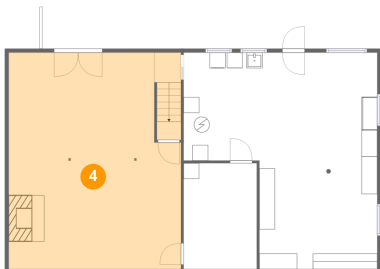
3 Floor 1 - Utility



Max Dimensions: 24'9" x 27'7"
Calculated Area: 549 sq. ft
Included: No

Heated: Yes
Finished: No
Enclosed: Yes
Contiguous: Yes
Permitted: Yes
Wet space: No
Addition: No
Conversion: No

4 Floor 1 - Recreation Room



Max Dimensions: 22'0" x 27'7"
Calculated Area: 604 sq. ft
Included: No

Heated: Yes
Finished: Yes
Enclosed: Yes
Contiguous: No
Permitted: Yes
Wet space: No
Addition: No
Conversion: No

5 Floor 2 - Bath

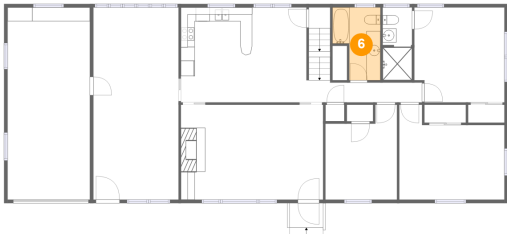


Max Dimensions: 4'3" x 10'6"
Calculated Area: 44 sq. ft
Included: Yes

Heated: Yes
Finished: Yes
Enclosed: Yes
Contiguous: Yes
Permitted: Yes
Wet space: Yes
Addition: No
Conversion: No

4362 Fontaine Circle, Windsor West, Cave Spring, Roanoke,
Roanoke County, Virginia, United States, 24018

6 Floor 2 - Bath



Max Dimensions: 6'11" x 10'6"
Calculated Area: 59 sq. ft
Included: Yes

Heated: Yes
Finished: Yes
Enclosed: Yes
Contiguous: Yes
Permitted: Yes
Wet space: Yes
Addition: No
Conversion: No

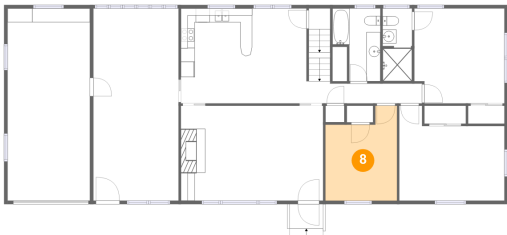
7 Floor 2 - Dining Area



Max Dimensions: 7'10" x 13'8"
Calculated Area: 107 sq. ft
Included: Yes

Heated: Yes
Finished: Yes
Enclosed: Yes
Contiguous: Yes
Permitted: Yes
Wet space: No
Addition: No
Conversion: No

8 Floor 2 - Bedroom



Max Dimensions: 10'4" x 13'8"
Calculated Area: 121 sq. ft
Included: Yes

Heated: Yes
Finished: Yes
Enclosed: Yes
Contiguous: Yes
Permitted: Yes
Wet space: No
Addition: No
Conversion: No

4362 Fontaine Circle, Windsor West, Cave Spring, Roanoke,
Roanoke County, Virginia, United States, 24018

9 Floor 2 - Hall



Max Dimensions: 16'8" x 2'10"
Calculated Area: 81 sq. ft
Included: Yes

Heated: Yes
Finished: Yes
Enclosed: Yes
Contiguous: Yes
Permitted: Yes
Wet space: No
Addition: No
Conversion: No

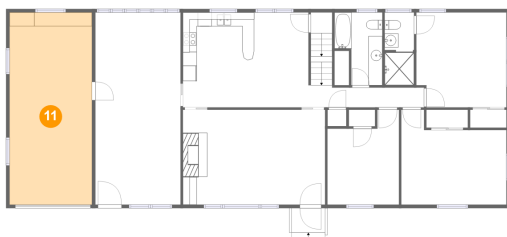
10 Floor 2 - Kitchen



Max Dimensions: 10'3" x 13'8"
Calculated Area: 140 sq. ft
Included: Yes

Heated: Yes
Finished: Yes
Enclosed: Yes
Contiguous: Yes
Permitted: Yes
Wet space: No
Addition: No
Conversion: No

11 Floor 2 - Garage



Max Dimensions: 11'10" x 27'7"
Calculated Area: 327 sq. ft
Included: No

Heated: No
Finished: No
Enclosed: Yes
Contiguous: Yes
Permitted: Yes
Wet space: No
Addition: No
Conversion: No

4362 Fontaine Circle, Windsor West, Cave Spring, Roanoke,
Roanoke County, Virginia, United States, 24018

12 Floor 2 - Family Room



Max Dimensions: 12'3" x 27'7"
Calculated Area: 339 sq. ft
Included: Yes

Heated: Yes
Finished: Yes
Enclosed: Yes
Contiguous: Yes
Permitted: Yes
Wet space: No
Addition: No
Conversion: No

13 Floor 2 - Porch



Max Dimensions: 4'9" x 3'6"
Calculated Area: 17 sq. ft
Included: No

Heated: No
Finished: Yes
Enclosed: No
Contiguous: Yes
Permitted: Yes
Wet space: No
Addition: No
Conversion: No

14 Floor 2 - Bedroom



Max Dimensions: 15'1" x 13'8"
Calculated Area: 172 sq. ft
Included: Yes

Heated: Yes
Finished: Yes
Enclosed: Yes
Contiguous: Yes
Permitted: Yes
Wet space: No
Addition: No
Conversion: No

4362 Fontaine Circle, Windsor West, Cave Spring, Roanoke,
Roanoke County, Virginia, United States, 24018

15 Floor 2 - Primary Bedroom



Max Dimensions: 13'0" x 13'8"
Calculated Area: 172 sq. ft
Included: Yes

Heated: Yes
Finished: Yes
Enclosed: Yes
Contiguous: Yes
Permitted: Yes
Wet space: No
Addition: No
Conversion: No

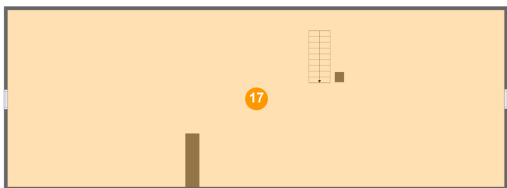
16 Floor 2 - Living Room



Max Dimensions: 20'6" x 13'8"
Calculated Area: 279 sq. ft
Included: Yes

Heated: Yes
Finished: Yes
Enclosed: Yes
Contiguous: Yes
Permitted: Yes
Wet space: No
Addition: No
Conversion: No

17 Floor 3 - Attic



Max Dimensions: 71'6" x 25'5"
Calculated Area: 1818 sq. ft
Included: No

Heated: No
Finished: No
Enclosed: Yes
Contiguous: Yes
Permitted: Yes
Wet space: No
Addition: No
Conversion: No