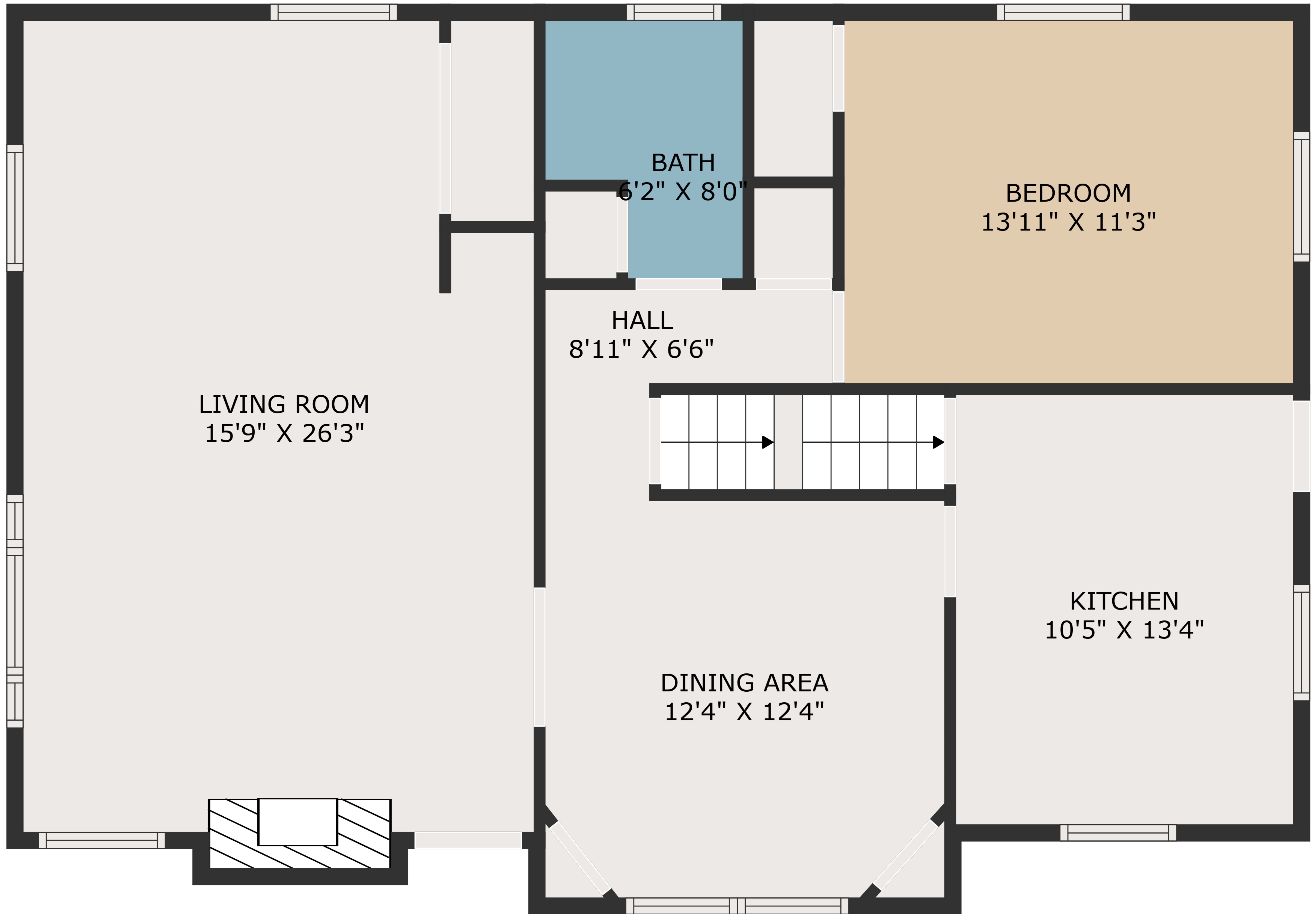


BASEMENT  
38'2" X 27'2"

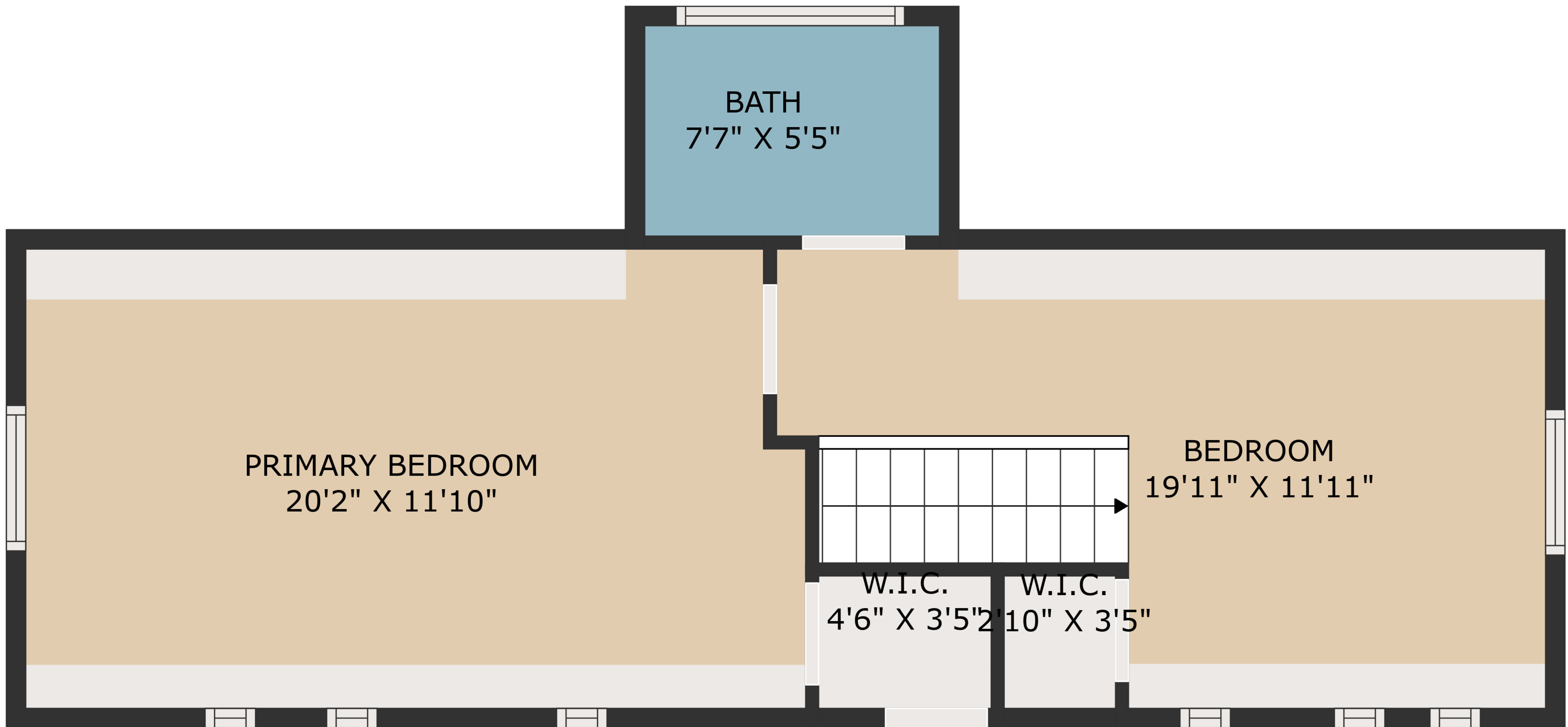
**TOTAL: 2400 sq. ft**  
BELOW GROUND: 957 sq. ft, FLOOR 2: 1014 sq. ft, FLOOR 3: 429 sq. ft  
EXCLUDED AREAS: FIREPLACE: 7 sq. ft, LOW CEILING: 83 sq. ft

MEASUREMENTS ARE DEEMED HIGHLY RELIABLE BUT NOT GUARANTEED.



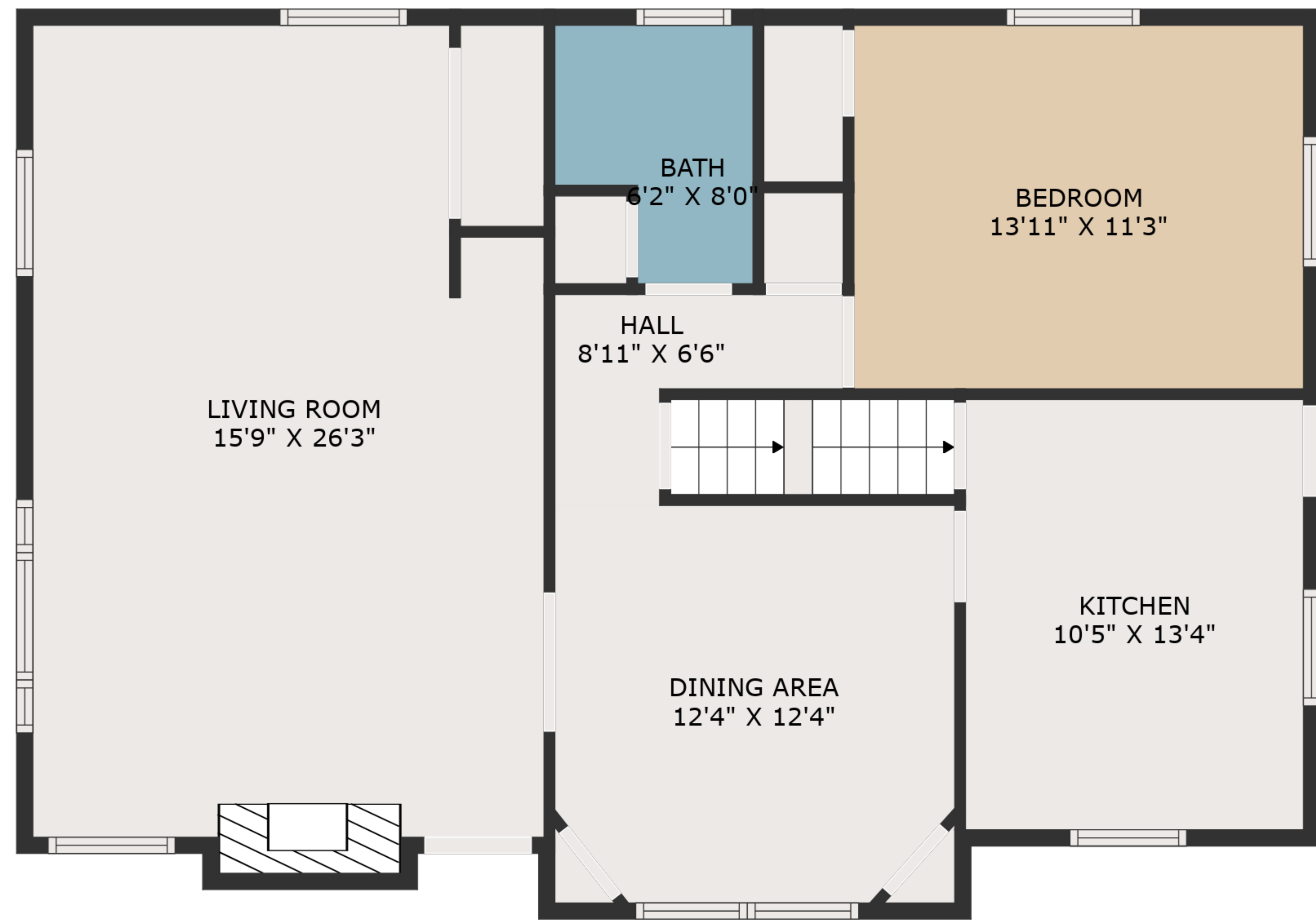
**TOTAL: 2400 sq. ft**  
BELOW GROUND: 957 sq. ft, FLOOR 2: 1014 sq. ft, FLOOR 3: 429 sq. ft  
EXCLUDED AREAS: FIREPLACE: 7 sq. ft, LOW CEILING: 83 sq. ft

MEASUREMENTS ARE DEEMED HIGHLY RELIABLE BUT NOT GUARANTEED.



**TOTAL: 2400 sq. ft**  
BELOW GROUND: 957 sq. ft, FLOOR 2: 1014 sq. ft, FLOOR 3: 429 sq. ft  
EXCLUDED AREAS: FIREPLACE: 7 sq. ft, LOW CEILING: 83 sq. ft

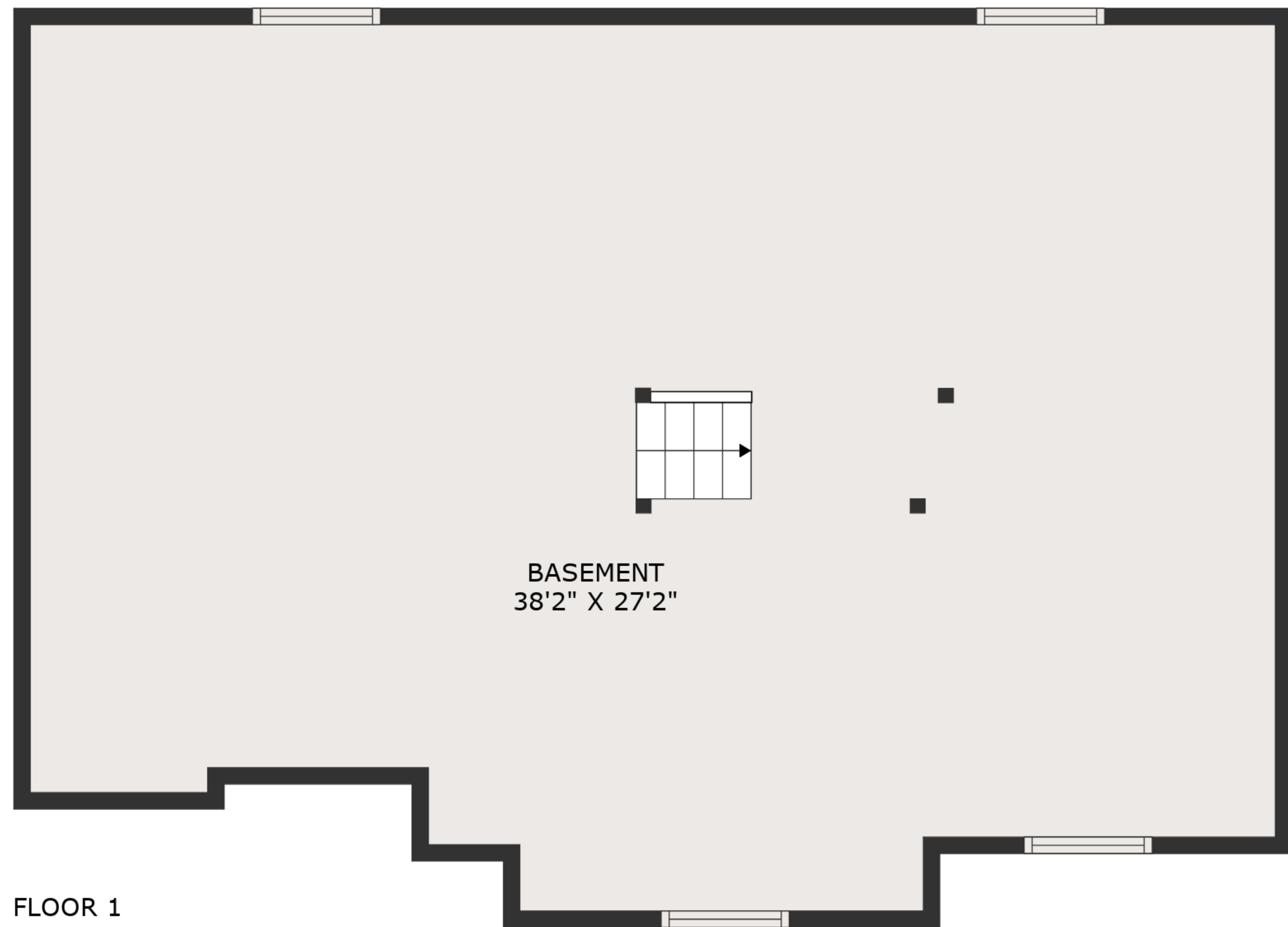
MEASUREMENTS ARE DEEMED HIGHLY RELIABLE BUT NOT GUARANTEED.



FLOOR 2



FLOOR 3



FLOOR 1

**TOTAL: 2400 sq. ft**  
 BELOW GROUND: 957 sq. ft, FLOOR 2: 1014 sq. ft, FLOOR 3: 429 sq. ft  
 EXCLUDED AREAS: FIREPLACE: 7 sq. ft, LOW CEILING: 83 sq. ft

MEASUREMENTS ARE DEEMED HIGHLY RELIABLE BUT NOT GUARANTEED.