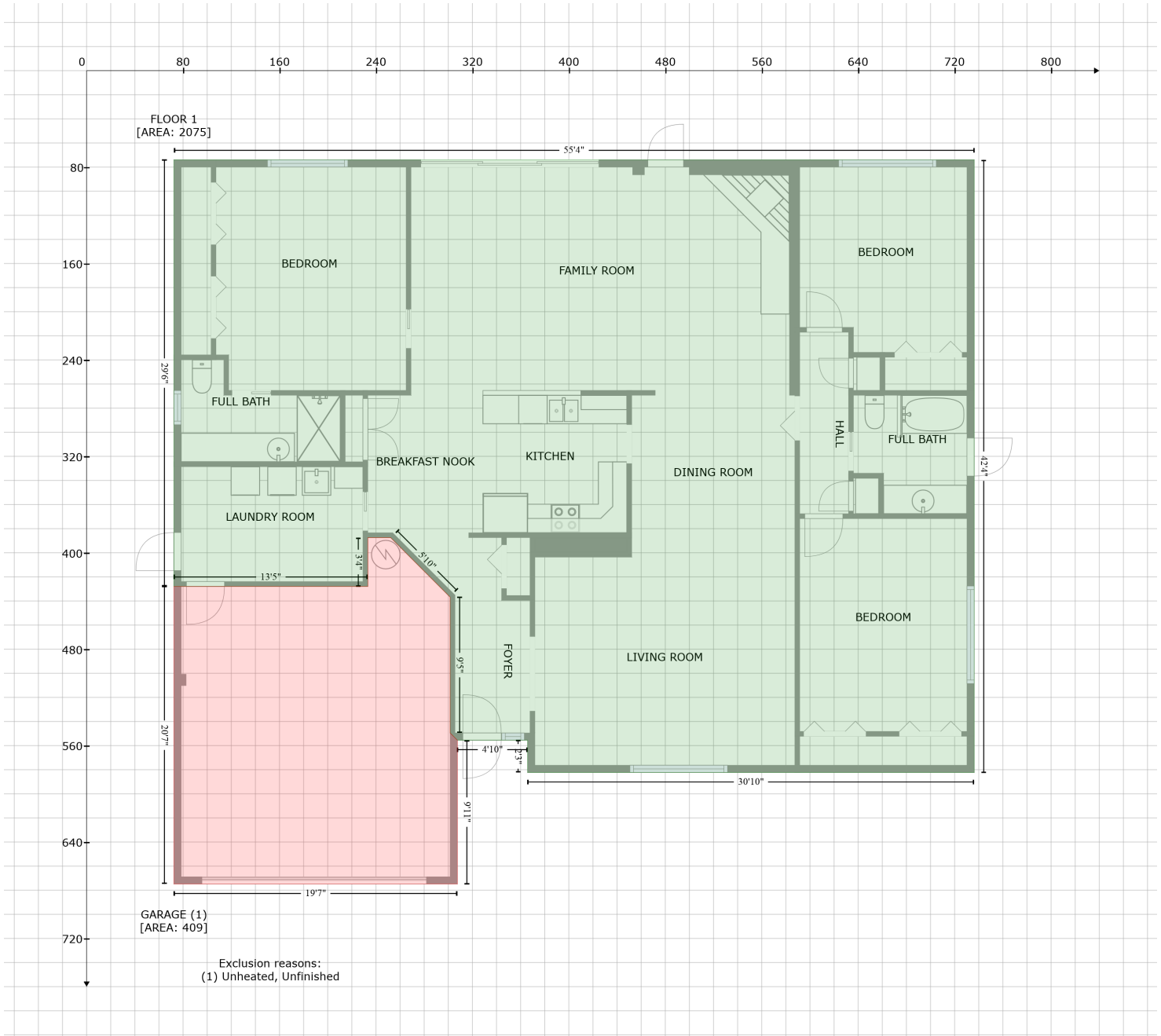


12221 Imperial Drive, Boca Ciega Ridge, Seminole, Pinellas County, Florida, United States, 33772

Gross Living Area: 2075 sq. ft



Space	Area (sq. ft)	Calculation <small>Coordinate Polygon Area Algorithm using inches</small>
FLOOR 1 (Living area)	2075	$-\left((736.2 + 736.2) * (73.9 - 582.3) + (736.2 + 365.8) * (582.3 - 582.3) + (365.8 + 365.8) * (582.3 - 555.5) + (365.8 + 307.5) * (555.5 - 555.5) + (307.5 + 301.5) * (555.5 - 549.5) + (301.5 + 301.5) * (549.5 - 436.8) + (301.5 + 252.2) * (436.8 - 387.4) + (252.2 + 233.2) * (387.4 - 387.4) + (233.2 + 233.2) * (387.4 - 427.9) + (233.2 + 72.4) * (427.9 - 427.9) + (72.4 + 72.4) * (427.9 - 73.9) + (72.4 + 736.2) * (73.9 - 73.9)\right) * 0.5 * 0.00694$
GARAGE (Non-living area)	409	$-\left((252.2 + 301.5) * (387.4 - 436.8) + (301.5 + 301.5) * (436.8 - 549.5) + (301.5 + 307.5) * (549.5 - 555.5) + (307.5 + 307.5) * (555.5 - 674.9) + (307.5 + 72.4) * (674.9 - 674.9) + (72.4 + 72.4) * (72.4 - 72.4)\right) * 0.5 * 0.00694$

12221 Imperial Drive, Boca Ciega Ridge, Seminole, Pinellas County, Florida, United States, 33772

Gross Living Area: 2075 sq. ft

Space	Area (sq. ft)	Calculation <small>Coordinate Polygon Area Algorithm using inches</small>
		$(674.9 - 427.9) + (72.4 + 233.2) * (427.9 - 427.9) + (233.2 + 233.2) * (427.9 - 387.4) + (233.2 + 252.2) * (387.4 - 387.4)) * 0.5 * 0.00694$