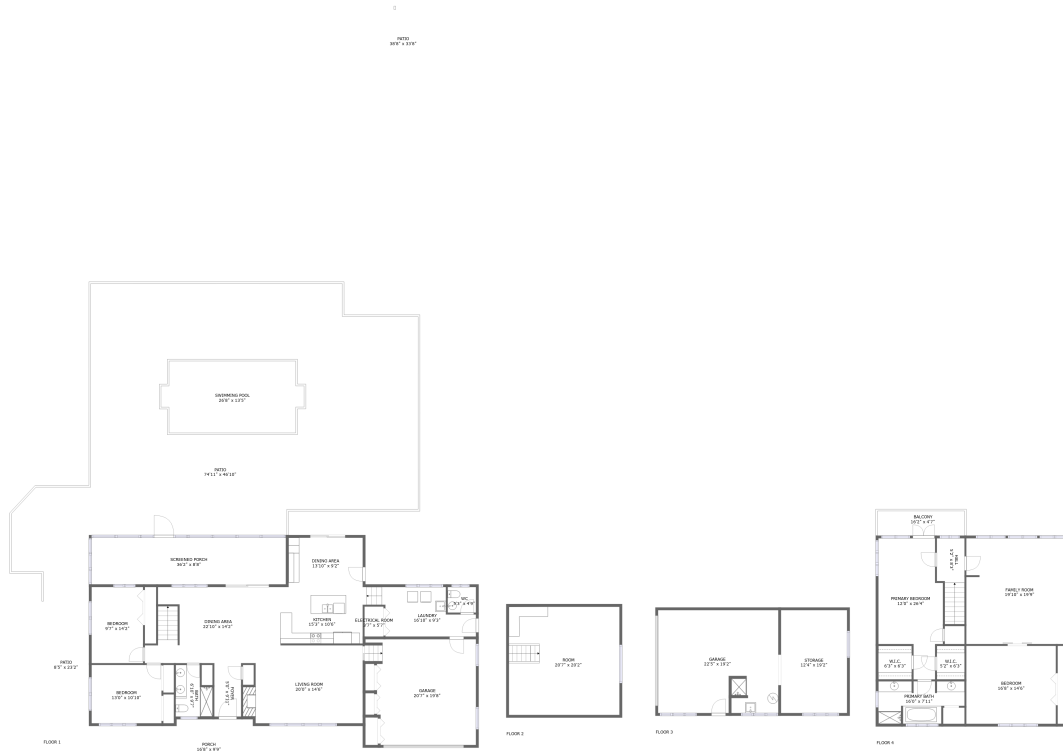



Home report

3211 Forest Lane, Murrysville, Westmoreland County,
Pennsylvania, United States, 15668



Property summary


 **2** Garages


 **4** Bedrooms

 **2** Bathrooms

 **1** Half baths

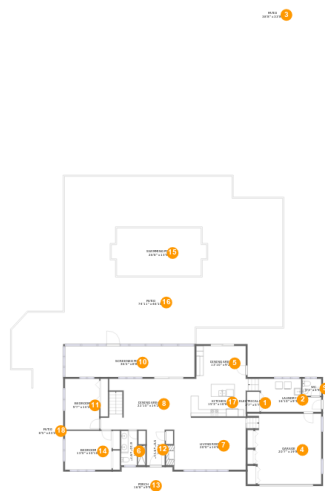
 **4** Floors

 **3,267**
Gross living
area sqft

 **9,291**
Total sqft

Scan captured on Thu, 20 Feb 2025 17:19:50 GMT

Information is calculated by **LIDAR** technology deemed highly reliable but not guaranteed.



Room dimensions

Floor 1

Total sqft: 6708 Living area: 1670

#		Dimensions	sqft	Counted as living area
1	Electrical Room	3'7" x 5'7"	20 sq. ft	No
2	Laundry	16'10" x 9'3"	141 sq. ft	Yes
3	Patio	38'8" x 33'8"	1302 sq. ft	No
4	Garage	20'7" x 19'8"	367 sq. ft	No
5	Dining Area	13'10" x 9'2"	127 sq. ft	Yes
6	Bath	6'10" x 9'7"	56 sq. ft	Yes
7	Living Room	20'0" x 14'6"	290 sq. ft	Yes
8	Dining Area	22'10" x 14'2"	312 sq. ft	Yes
9	WC	5'3" x 4'9"	25 sq. ft	Yes
10	Screened Porch	36'2" x 8'8"	314 sq. ft	No
11	Bedroom	9'7" x 14'2"	136 sq. ft	Yes

Scan captured on Thu, 20 Feb 2025 17:19:50 GMT

Information is calculated by **LIDAR** technology deemed highly reliable but not guaranteed.

Home report

**3211 Forest Lane, Murrysville, Westmoreland County,
Pennsylvania, United States, 15668**



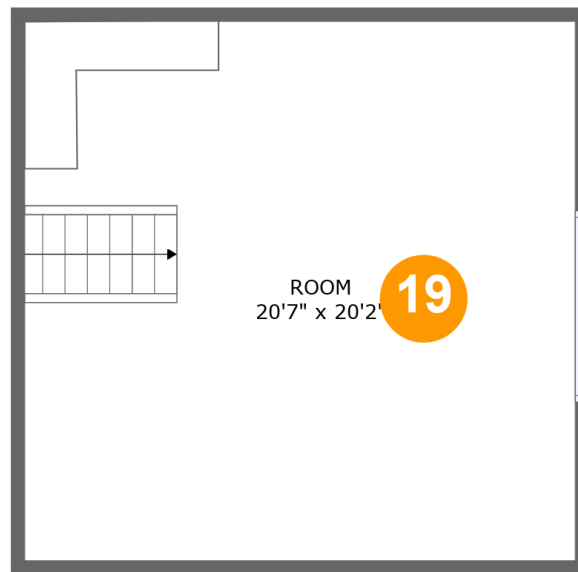
#		Dimensions	sqft	Counted as living area
12	Foyer	5'0" x 9'11"	50 sq. ft	Yes
13	Porch	16'8" x 9'9"	160 sq. ft	No
14	Bedroom	13'0" x 10'10"	142 sq. ft	Yes
15	Swimming Pool	26'8" x 13'5"	328 sq. ft	No
16	Patio	74'11" x 46'10"	2918 sq. ft	No
17	Kitchen	15'3" x 10'6"	161 sq. ft	Yes
18	Patio	8'5" x 23'2"	197 sq. ft	No

Scan captured on Thu, 20 Feb 2025 17:19:50 GMT

Information is calculated by **LIDAR** technology deemed highly reliable but not guaranteed.

Home report

3211 Forest Lane, Murrysville, Westmoreland County,
Pennsylvania, United States, 15668



Room dimensions

Floor 2

Total sqft: 456 Living area: 275

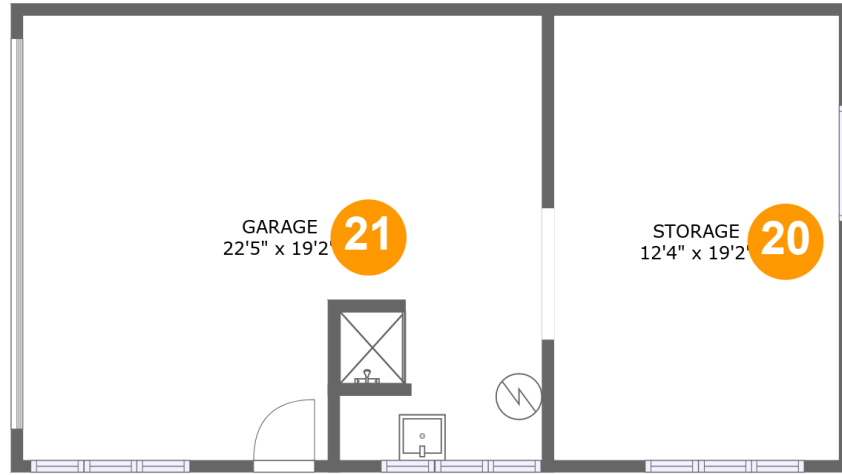
#		Dimensions	sqft	Counted as living area
19	Room	20'7" x 20'2"	262 sq. ft	Yes

Scan captured on Thu, 20 Feb 2025 17:19:50 GMT

Information is calculated by **LIDAR** technology deemed highly reliable but not guaranteed.

Home report

3211 Forest Lane, Murrysville, Westmoreland County,
Pennsylvania, United States, 15668



Room dimensions

Floor 3

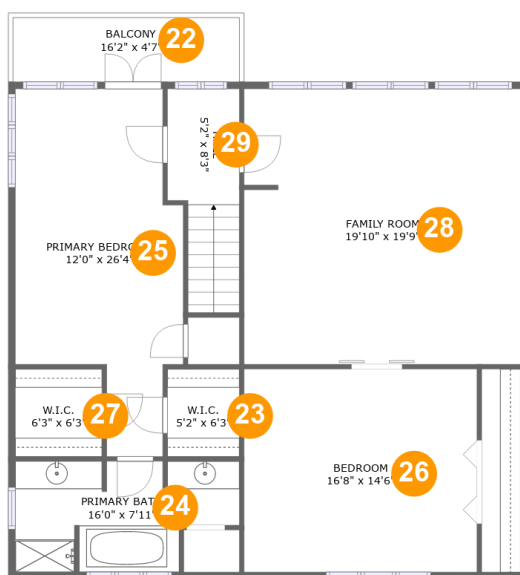
Total sqft: 731

Living area: 0

#		Dimensions	sqft	Counted as living area
20	Storage	12'4" x 19'2"	236 sq. ft	No
21	Garage	22'5" x 19'2"	423 sq. ft	No

Scan captured on Thu, 20 Feb 2025 17:19:50 GMT

Information is calculated by **LIDAR** technology deemed highly reliable but not guaranteed.



Room dimensions

Floor 4

Total sqft: 1396 Living area: 1322

#		Dimensions	sqft	Counted as living area
22	Balcony	16'2" x 4'7"	74 sq. ft	No
23	W.I.C.	5'2" x 6'3"	32 sq. ft	Yes
24	Primary Bath	16'0" x 7'11"	110 sq. ft	Yes
25	Primary Bedroom	12'0" x 26'4"	251 sq. ft	Yes
26	Bedroom	16'8" x 14'6"	242 sq. ft	Yes
27	W.I.C.	6'3" x 6'3"	39 sq. ft	Yes
28	Family Room	19'10" x 19'9"	389 sq. ft	Yes
29	Hall	5'2" x 8'3"	71 sq. ft	Yes

1 Floor 1 - Electrical Room



Dimensions: 3'7" x 5'7"
Area: 20 sq. ft
Counted as living area: No

Heated: No
Finished: No
Enclosed: Yes
Contiguous: Yes
Permitted: Yes
Wet space: No
Addition: No
Conversion: No

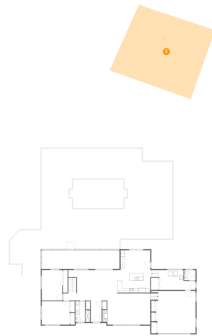
2 Floor 1 - Laundry



Dimensions: 16'10" x 9'3"
Area: 141 sq. ft
Counted as living area: Yes

Heated: Yes
Finished: Yes
Enclosed: Yes
Contiguous: Yes
Permitted: Yes
Wet space: No
Addition: No
Conversion: No

3 Floor 1 - Patio



Dimensions: 38'8" x 33'8"
Area: 1302 sq. ft
Counted as living area: No

Heated: No
Finished: Yes
Enclosed: No
Contiguous: Yes
Permitted: Yes
Wet space: No
Addition: No
Conversion: No

4 Floor 1 - Garage



Dimensions: 20'7" x 19'8"
Area: 367 sq. ft
Counted as living area: No

Heated: No
Finished: No
Enclosed: Yes
Contiguous: Yes
Permitted: Yes
Wet space: No
Addition: No
Conversion: No

5 Floor 1 - Dining Area



Dimensions: 13'10" x 9'2"
Area: 127 sq. ft
Counted as living area: Yes

Heated: Yes
Finished: Yes
Enclosed: Yes
Contiguous: Yes
Permitted: Yes
Wet space: No
Addition: No
Conversion: No

6 Floor 1 - Bath



Dimensions: 6'10" x 9'7"
Area: 56 sq. ft
Counted as living area: Yes

Heated: Yes
Finished: Yes
Enclosed: Yes
Contiguous: Yes
Permitted: Yes
Wet space: Yes
Addition: No
Conversion: No

7 Floor 1 - Living Room



Dimensions: 20'0" x 14'6"
Area: 290 sq. ft
Counted as living area: Yes

Heated: Yes
Finished: Yes
Enclosed: Yes
Contiguous: Yes
Permitted: Yes
Wet space: No
Addition: No
Conversion: No

8 Floor 1 - Dining Area



Dimensions: 22'10" x 14'2"
Area: 312 sq. ft
Counted as living area: Yes

Heated: Yes
Finished: Yes
Enclosed: Yes
Contiguous: Yes
Permitted: Yes
Wet space: No
Addition: No
Conversion: No

9 Floor 1 - WC



Dimensions: 5'3" x 4'9"
Area: 25 sq. ft
Counted as living area: Yes

Heated: Yes
Finished: Yes
Enclosed: Yes
Contiguous: Yes
Permitted: Yes
Wet space: Yes
Addition: No
Conversion: No

10 Floor 1 - Screened Porch



Dimensions: 36'2" x 8'8"
Area: 314 sq. ft
Counted as living area: No

Heated: No
Finished: Yes
Enclosed: No
Contiguous: Yes
Permitted: Yes
Wet space: No
Addition: No
Conversion: No

11 Floor 1 - Bedroom



Dimensions: 9'7" x 14'2"
Area: 136 sq. ft
Counted as living area: Yes

Heated: Yes
Finished: Yes
Enclosed: Yes
Contiguous: Yes
Permitted: Yes
Wet space: No
Addition: No
Conversion: No

12 Floor 1 - Foyer



Dimensions: 5'0" x 9'11"
Area: 50 sq. ft
Counted as living area: Yes

Heated: Yes
Finished: Yes
Enclosed: Yes
Contiguous: Yes
Permitted: Yes
Wet space: No
Addition: No
Conversion: No

13 Floor 1 - Porch



Dimensions: 16'8" x 9'9"
Area: 160 sq. ft
Counted as living area: No

Heated: No
Finished: Yes
Enclosed: No
Contiguous: Yes
Permitted: Yes
Wet space: No
Addition: No
Conversion: No

14 Floor 1 - Bedroom



Dimensions: 13'0" x 10'10"
Area: 142 sq. ft
Counted as living area: Yes

Heated: Yes
Finished: Yes
Enclosed: Yes
Contiguous: Yes
Permitted: Yes
Wet space: No
Addition: No
Conversion: No

15 Floor 1 - Swimming Pool



Dimensions: 26'8" x 13'5"
Area: 328 sq. ft
Counted as living area: No

Heated: No
Finished: No
Enclosed: No
Contiguous: Yes
Permitted: No
Wet space: No
Addition: No
Conversion: No

16 Floor 1 - Patio



Dimensions: 74'11" x 46'10"
Area: 2918 sq. ft
Counted as living area: No

Heated: No
Finished: Yes
Enclosed: No
Contiguous: Yes
Permitted: Yes
Wet space: No
Addition: No
Conversion: No

17 Floor 1 - Kitchen



Dimensions: 15'3" x 10'6"
Area: 161 sq. ft
Counted as living area: Yes

Heated: Yes
Finished: Yes
Enclosed: Yes
Contiguous: Yes
Permitted: Yes
Wet space: No
Addition: No
Conversion: No

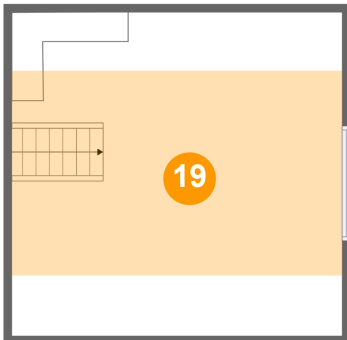
18 Floor 1 - Patio



Dimensions: 8'5" x 23'2"
Area: 197 sq. ft
Counted as living area: No

Heated: No
Finished: Yes
Enclosed: No
Contiguous: Yes
Permitted: Yes
Wet space: No
Addition: No
Conversion: No

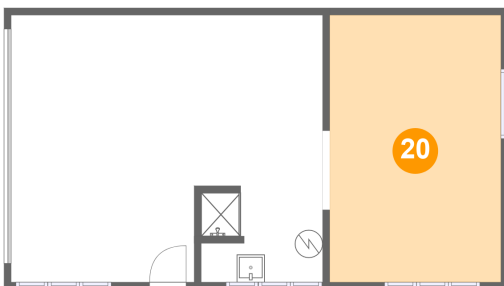
19 Floor 2 - Room



Dimensions: 20'7" x 20'2"
Area: 262 sq. ft
Counted as living area: Yes

Heated: Yes
Finished: Yes
Enclosed: Yes
Contiguous: Yes
Permitted: Yes
Wet space: No
Addition: No
Conversion: No

20 Floor 3 - Storage



Dimensions: 12'4" x 19'2"
Area: 236 sq. ft
Counted as living area: No

Heated: No
Finished: No
Enclosed: No
Contiguous: Yes
Permitted: Yes
Wet space: No
Addition: No
Conversion: No

21 Floor 3 - Garage



Dimensions: 22'5" x 19'2"
Area: 423 sq. ft
Counted as living area: No

Heated: No
Finished: No
Enclosed: Yes
Contiguous: Yes
Permitted: Yes
Wet space: No
Addition: No
Conversion: No

22 Floor 4 - Balcony



Dimensions: 16'2" x 4'7"
Area: 74 sq. ft
Counted as living area: No

Heated: No
Finished: Yes
Enclosed: No
Contiguous: Yes
Permitted: Yes
Wet space: No
Addition: No
Conversion: No

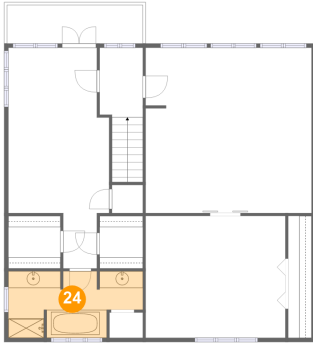
23 Floor 4 - W.I.C.



Dimensions: 5'2" x 6'3"
Area: 32 sq. ft
Counted as living area: Yes

Heated: Yes
Finished: Yes
Enclosed: Yes
Contiguous: Yes
Permitted: Yes
Wet space: No
Addition: No
Conversion: No

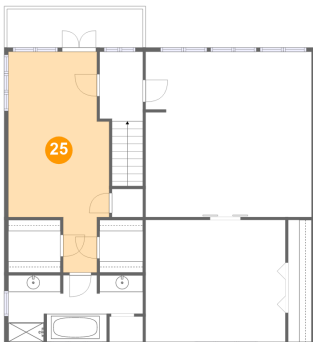
24 Floor 4 - Primary Bath



Dimensions: 16'0" x 7'11"
Area: 110 sq. ft
Counted as living area: Yes

Heated: Yes
Finished: Yes
Enclosed: Yes
Contiguous: Yes
Permitted: Yes
Wet space: Yes
Addition: No
Conversion: No

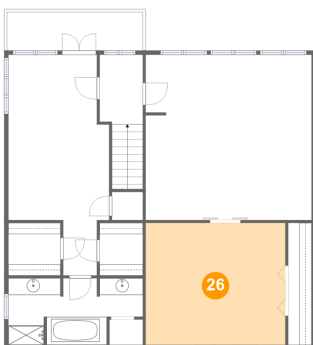
25 Floor 4 - Primary Bedroom



Dimensions: 12'0" x 26'4"
Area: 251 sq. ft
Counted as living area: Yes

Heated: Yes
Finished: Yes
Enclosed: Yes
Contiguous: Yes
Permitted: Yes
Wet space: No
Addition: No
Conversion: No

26 Floor 4 - Bedroom



Dimensions: 16'8" x 14'6"
Area: 242 sq. ft
Counted as living area: Yes

Heated: Yes
Finished: Yes
Enclosed: Yes
Contiguous: Yes
Permitted: Yes
Wet space: No
Addition: No
Conversion: No

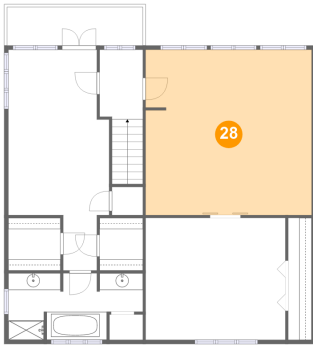
27 Floor 4 - W.I.C.



Dimensions: 6'3" x 6'3"
Area: 39 sq. ft
Counted as living area: Yes

Heated: Yes
Finished: Yes
Enclosed: Yes
Contiguous: Yes
Permitted: Yes
Wet space: No
Addition: No
Conversion: No

28 Floor 4 - Family Room



Dimensions: 19'10" x 19'9"
Area: 389 sq. ft
Counted as living area: Yes

Heated: Yes
Finished: Yes
Enclosed: Yes
Contiguous: Yes
Permitted: Yes
Wet space: No
Addition: No
Conversion: No

29 Floor 4 - Hall



Dimensions: 5'2" x 8'3"
Area: 71 sq. ft
Counted as living area: Yes

Heated: Yes
Finished: Yes
Enclosed: Yes
Contiguous: Yes
Permitted: Yes
Wet space: No
Addition: No
Conversion: No