



Home report


2439 Lakewood Pointe Dr,Seabrook,TX,US




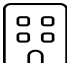
Property summary


**1** Garages


**4** Bedrooms

**3** Bathrooms

**1** Half baths

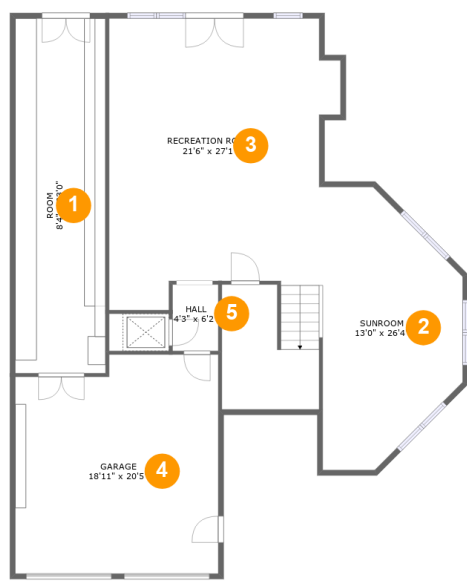
**3** Floors

**4,311** Gross living area sqft

**5,485** Total sqft

Home report

2439 Lakewood Pointe Dr,Seabrook,TX,US



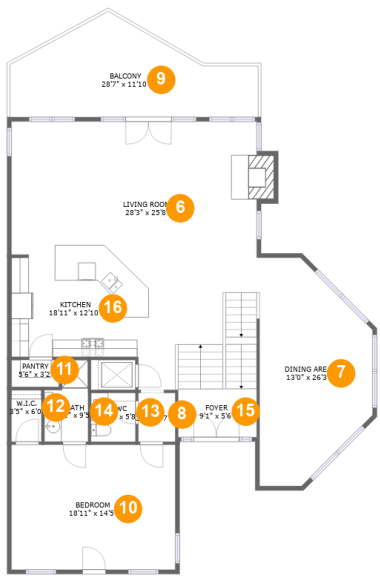
Room dimensions

Floor 1 Total sqft: 1692 Living area: 1010

#		Dimensions	sqft	Counted as living area
1	Room	8'4" x 33'0"	277 sq. ft	No
2	Sunroom	13'0" x 26'4"	279 sq. ft	Yes
3	Recreation Room	21'6" x 27'1"	607 sq. ft	Yes
4	Garage	18'11" x 20'5"	367 sq. ft	No
5	Hall	4'3" x 6'2"	26 sq. ft	Yes

Home report

2439 Lakewood Pointe Dr,Seabrook,TX,US



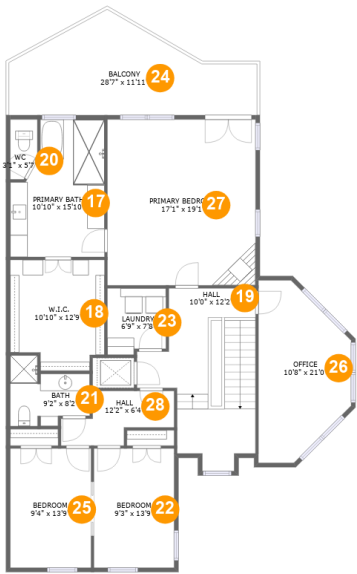
Room dimensions

Floor 2Total sqft: 1945 Living area: 1693

#		Dimensions	sqft	Counted as living area
6	Living Room	28'3" x 25'8"	601 sq. ft	Yes
7	Dining Area	13'0" x 26'3"	277 sq. ft	Yes
8	Hall	3'2" x 5'7"	24 sq. ft	Yes
9	Balcony	28'7" x 11'10"	240 sq. ft	No
10	Bedroom	18'11" x 14'5"	272 sq. ft	Yes
11	Pantry	5'6" x 3'2"	17 sq. ft	Yes
12	W.I.C.	3'5" x 6'0"	21 sq. ft	Yes
13	WC	5'2" x 5'8"	29 sq. ft	Yes
14	Bath	5'1" x 9'5"	41 sq. ft	Yes
15	Foyer	9'1" x 5'6"	51 sq. ft	Yes
16	Kitchen	18'11" x 12'10"	226 sq. ft	Yes

Home report

2439 Lakewood Pointe Dr,Seabrook,TX,US



Room dimensions

Floor 3 Total sqft: 1848 Living area: 1608

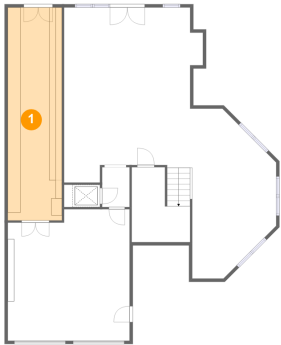
#		Dimensions	sqft	Counted as living area
17	Primary Bath	10'10" x 15'10"	150 sq. ft	Yes
18	W.I.C.	10'10" x 12'9"	128 sq. ft	Yes
19	Hall	10'0" x 12'2"	206 sq. ft	Yes
20	WC	3'1" x 5'7"	19 sq. ft	Yes
21	Bath	9'2" x 8'2"	57 sq. ft	Yes
22	Bedroom	9'3" x 13'9"	127 sq. ft	Yes
23	Laundry	6'9" x 7'8"	49 sq. ft	Yes
24	Balcony	28'7" x 11'11"	240 sq. ft	No
25	Bedroom	9'4" x 13'9"	128 sq. ft	Yes
26	Office	10'8" x 21'0"	180 sq. ft	Yes
27	Primary Bedroom	17'1" x 19'1"	327 sq. ft	Yes

Home report

2439 Lakewood Pointe Dr,Seabrook,TX,US

#		Dimensions	sqft	Counted as living area
28	Hall	12'2" x 6'4"	59 sq. ft	Yes

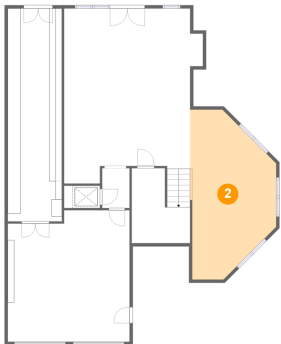
1 Floor 1 - Room



Dimensions: 8'4" x 33'0"
Area: 277 sq. ft
Counted as living area: No

Heated: Yes
Finished: No
Enclosed: Yes
Contiguous: Yes
Permitted: Yes
Wet space: No
Addition: No
Conversion: No

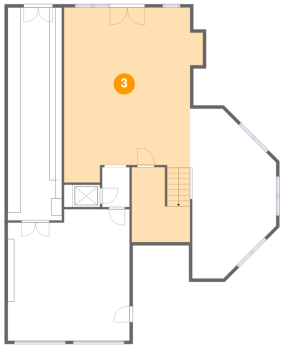
2 Floor 1 - Sunroom



Dimensions: 13'0" x 26'4"
Area: 279 sq. ft
Counted as living area: Yes

Heated: Yes
Finished: Yes
Enclosed: Yes
Contiguous: Yes
Permitted: Yes
Wet space: No
Addition: No
Conversion: No

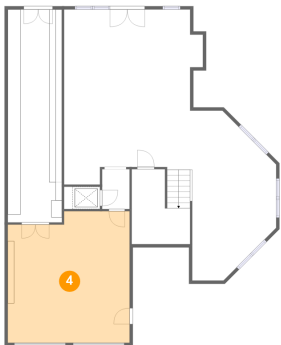
3 Floor 1 - Recreation Room



Dimensions: 21'6" x 27'1"
Area: 607 sq. ft
Counted as living area: Yes

Heated: Yes
Finished: Yes
Enclosed: Yes
Contiguous: Yes
Permitted: Yes
Wet space: No
Addition: No
Conversion: No

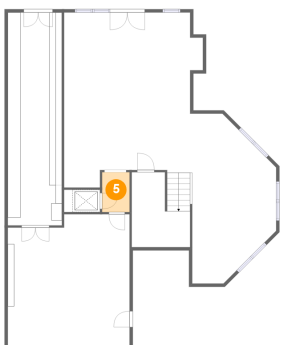
4 Floor 1 - Garage



Dimensions: 18'11" x 20'5"
Area: 367 sq. ft
Counted as living area: No

Heated: No
Finished: No
Enclosed: Yes
Contiguous: Yes
Permitted: Yes
Wet space: No
Addition: No
Conversion: No

5 Floor 1 - Hall



Dimensions: 4'3" x 6'2"
Area: 26 sq. ft
Counted as living area: Yes

Heated: Yes
Finished: Yes
Enclosed: Yes
Contiguous: Yes
Permitted: Yes
Wet space: No
Addition: No
Conversion: No

6 Floor 2 - Living Room



Dimensions: 28'3" x 25'8"
Area: 601 sq. ft
Counted as living area: Yes

Heated: Yes
Finished: Yes
Enclosed: Yes
Contiguous: Yes
Permitted: Yes
Wet space: No
Addition: No
Conversion: No

7 Floor 2 - Dining Area



Dimensions: 13'0" x 26'3"
Area: 277 sq. ft
Counted as living area: Yes

Heated: Yes
Finished: Yes
Enclosed: Yes
Contiguous: Yes
Permitted: Yes
Wet space: No
Addition: No
Conversion: No

8 Floor 2 - Hall



Dimensions: 3'2" x 5'7"
Area: 24 sq. ft
Counted as living area: Yes

Heated: Yes
Finished: Yes
Enclosed: Yes
Contiguous: Yes
Permitted: Yes
Wet space: No
Addition: No
Conversion: No

9 Floor 2 - Balcony



Dimensions: 28'7" x 11'10"
Area: 240 sq. ft
Counted as living area: No

Heated: No
Finished: Yes
Enclosed: No
Contiguous: Yes
Permitted: Yes
Wet space: No
Addition: No
Conversion: No

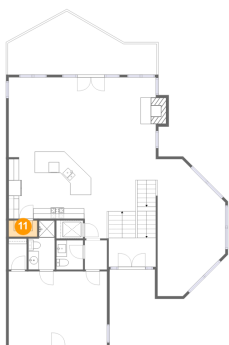
10 Floor 2 - Bedroom



Dimensions: 18'11" x 14'5"
Area: 272 sq. ft
Counted as living area: Yes

Heated: Yes
Finished: Yes
Enclosed: Yes
Contiguous: Yes
Permitted: Yes
Wet space: No
Addition: No
Conversion: No

11 Floor 2 - Pantry



Dimensions: 5'6" x 3'2"
Area: 17 sq. ft
Counted as living area: Yes

Heated: Yes
Finished: Yes
Enclosed: Yes
Contiguous: Yes
Permitted: Yes
Wet space: No
Addition: No
Conversion: No

12 Floor 2 - W.I.C.



Dimensions: 3'5" x 6'0"
Area: 21 sq. ft
Counted as living area: Yes

Heated: Yes
Finished: Yes
Enclosed: Yes
Contiguous: Yes
Permitted: Yes
Wet space: No
Addition: No
Conversion: No

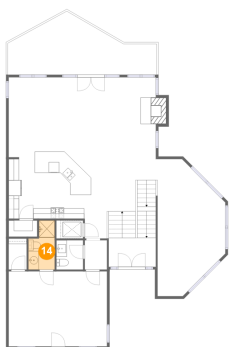
13 Floor 2 - WC



Dimensions: 5'2" x 5'8"
Area: 29 sq. ft
Counted as living area: Yes

Heated: Yes
Finished: Yes
Enclosed: Yes
Contiguous: Yes
Permitted: Yes
Wet space: Yes
Addition: No
Conversion: No

14 Floor 2 - Bath



Dimensions: 5'1" x 9'5"
Area: 41 sq. ft
Counted as living area: Yes

Heated: Yes
Finished: Yes
Enclosed: Yes
Contiguous: Yes
Permitted: Yes
Wet space: Yes
Addition: No
Conversion: No

15 Floor 2 - Foyer



Dimensions: 9'1" x 5'6"
Area: 51 sq. ft
Counted as living area: Yes

Heated: Yes
Finished: Yes
Enclosed: Yes
Contiguous: Yes
Permitted: Yes
Wet space: No
Addition: No
Conversion: No

16 Floor 2 - Kitchen



Dimensions: 18'11" x 12'10"
Area: 226 sq. ft
Counted as living area: Yes

Heated: Yes
Finished: Yes
Enclosed: Yes
Contiguous: Yes
Permitted: Yes
Wet space: No
Addition: No
Conversion: No

17 Floor 3 - Primary Bath



Dimensions: 10'10" x 15'10"
Area: 150 sq. ft
Counted as living area: Yes

Heated: Yes
Finished: Yes
Enclosed: Yes
Contiguous: Yes
Permitted: Yes
Wet space: Yes
Addition: No
Conversion: No

18 Floor 3 - W.I.C.



Dimensions: 10'10" x 12'9"
Area: 128 sq. ft
Counted as living area: Yes

Heated: Yes
Finished: Yes
Enclosed: Yes
Contiguous: Yes
Permitted: Yes
Wet space: No
Addition: No
Conversion: No

19 Floor 3 - Hall



Dimensions: 10'0" x 12'2"
Area: 206 sq. ft
Counted as living area: Yes

Heated: Yes
Finished: Yes
Enclosed: Yes
Contiguous: Yes
Permitted: Yes
Wet space: No
Addition: No
Conversion: No

20 Floor 3 - WC



Dimensions: 3'1" x 5'7"
Area: 19 sq. ft
Counted as living area: Yes

Heated: Yes
Finished: Yes
Enclosed: Yes
Contiguous: Yes
Permitted: Yes
Wet space: Yes
Addition: No
Conversion: No

21 Floor 3 - Bath



Dimensions: 9'2" x 8'2"
Area: 57 sq. ft
Counted as living area: Yes

Heated: Yes
Finished: Yes
Enclosed: Yes
Contiguous: Yes
Permitted: Yes
Wet space: Yes
Addition: No
Conversion: No

22 Floor 3 - Bedroom



Dimensions: 9'3" x 13'9"
Area: 127 sq. ft
Counted as living area: Yes

Heated: Yes
Finished: Yes
Enclosed: Yes
Contiguous: Yes
Permitted: Yes
Wet space: No
Addition: No
Conversion: No

23 Floor 3 - Laundry



Dimensions: 6'9" x 7'8"
Area: 49 sq. ft
Counted as living area: Yes

Heated: Yes
Finished: Yes
Enclosed: Yes
Contiguous: Yes
Permitted: Yes
Wet space: No
Addition: No
Conversion: No

24 Floor 3 - Balcony



Dimensions: 28'7" x 11'11"
Area: 240 sq. ft
Counted as living area: No

Heated: No
Finished: Yes
Enclosed: No
Contiguous: Yes
Permitted: Yes
Wet space: No
Addition: No
Conversion: No

25 Floor 3 - Bedroom



Dimensions: 9'4" x 13'9"
Area: 128 sq. ft
Counted as living area: Yes

Heated: Yes
Finished: Yes
Enclosed: Yes
Contiguous: Yes
Permitted: Yes
Wet space: No
Addition: No
Conversion: No

26 Floor 3 - Office



Dimensions: 10'8" x 21'0"
Area: 180 sq. ft
Counted as living area: Yes

Heated: Yes
Finished: Yes
Enclosed: Yes
Contiguous: Yes
Permitted: Yes
Wet space: No
Addition: No
Conversion: No

27 Floor 3 - Primary Bedroom



Dimensions: 17'1" x 19'1"
Area: 327 sq. ft
Counted as living area: Yes

Heated: Yes
Finished: Yes
Enclosed: Yes
Contiguous: Yes
Permitted: Yes
Wet space: No
Addition: No
Conversion: No

28 Floor 3 - Hall



Dimensions: 12'2" x 6'4"
Area: 59 sq. ft
Counted as living area: Yes

Heated: Yes
Finished: Yes
Enclosed: Yes
Contiguous: Yes
Permitted: Yes
Wet space: No
Addition: No
Conversion: No