

**3707 Wellington Drive SE, Roanoke, Virginia, United States**

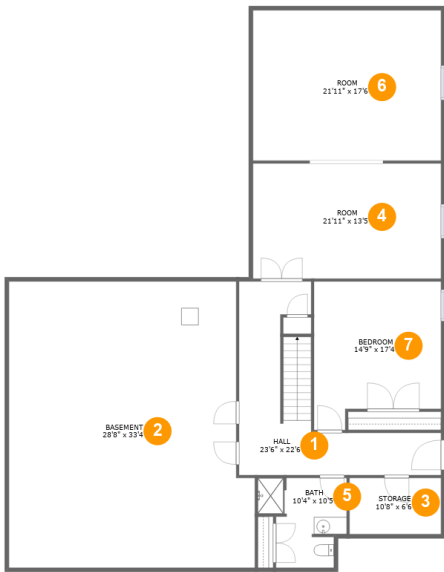


 **1** Garages
  **5** Bedrooms
  **4** Bathrooms
  **1** Half baths

 **2** Floors
  **5,549** Gross living area sqft
  **8,733** Total sqft

Home report

3707 Wellington Drive SE,Roanoke,Virginia,United States



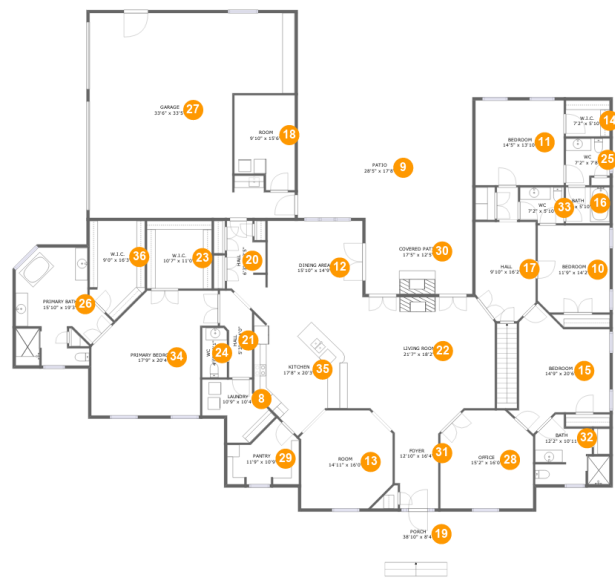
Room dimensions

Floor 1 Total sqft: 2436    Living area: 1408

#		Dimensions	sqft	Counted as living area
1	Hall	23'6" x 22'6"	251 sq. ft	Yes
2	Basement	28'8" x 33'4"	905 sq. ft	No
3	Storage	10'8" x 6'6"	70 sq. ft	No
4	Room	21'11" x 13'5"	294 sq. ft	Yes
5	Bath	10'4" x 10'5"	87 sq. ft	Yes
6	Room	21'11" x 17'6"	383 sq. ft	Yes
7	Bedroom	14'9" x 17'4"	228 sq. ft	Yes

Home report

3707 Wellington Drive SE,Roanoke,Virginia,United States



Room dimensions

Floor 2

Total sqft: 6297

Living area: 4141

#		Dimensions	sqft	Counted as living area
8	Laundry	10'9" x 10'4"	80 sq. ft	Yes
9	Patio	28'5" x 17'8"	454 sq. ft	No
10	Bedroom	11'9" x 14'2"	165 sq. ft	Yes
11	Bedroom	14'5" x 13'10"	200 sq. ft	Yes
12	Dining Area	15'10" x 14'9"	230 sq. ft	Yes
13	Room	14'11" x 16'0"	215 sq. ft	Yes
14	W.I.C.	7'2" x 5'10"	42 sq. ft	Yes
15	Bedroom	14'9" x 20'6"	231 sq. ft	Yes
16	Bath	7'2" x 5'10"	42 sq. ft	Yes
17	Hall	9'10" x 16'2"	147 sq. ft	Yes
18	Room	9'10" x 15'6"	139 sq. ft	No

## Home report

**3707 Wellington Drive SE, Roanoke, Virginia, United States**

#		Dimensions	sqft	Counted as living area
19	Porch	38'10" x 8'4"	318 sq. ft	No
20	Hall	6'3" x 13'5"	75 sq. ft	Yes
21	Hall	5'3" x 14'0"	56 sq. ft	Yes
22	Living Room	21'7" x 18'2"	385 sq. ft	Yes
23	W.I.C.	10'7" x 11'0"	117 sq. ft	Yes
24	WC	4'0" x 8'1"	32 sq. ft	Yes
25	WC	7'2" x 7'8"	49 sq. ft	Yes
26	Primary Bath	15'10" x 19'3"	225 sq. ft	Yes
27	Garage	33'6" x 33'5"	966 sq. ft	No
28	Office	15'2" x 16'0"	224 sq. ft	Yes
29	Pantry	11'9" x 10'9"	93 sq. ft	Yes
30	Covered Patio	17'5" x 12'5"	216 sq. ft	No
31	Foyer	12'10" x 16'4"	129 sq. ft	Yes
32	Bath	12'2" x 10'11"	100 sq. ft	Yes
33	WC	7'2" x 5'10"	40 sq. ft	Yes
34	Primary Bedroom	17'9" x 20'4"	336 sq. ft	Yes
35	Kitchen	17'8" x 20'3"	295 sq. ft	Yes
36	W.I.C.	9'0" x 16'3"	126 sq. ft	Yes

1 Floor 1 - Hall



Dimensions: 23'6" x 22'6"  
Area: 251 sq. ft  
Counted as living area: Yes

Heated: Yes  
Finished: Yes  
Enclosed: Yes  
Contiguous: Yes  
Permitted: Yes  
Wet space: No  
Addition: No  
Conversion: No

2 Floor 1 - Basement



Dimensions: 28'8" x 33'4"  
Area: 905 sq. ft  
Counted as living area: No

Heated: Yes  
Finished: No  
Enclosed: Yes  
Contiguous: Yes  
Permitted: Yes  
Wet space: No  
Addition: No  
Conversion: No

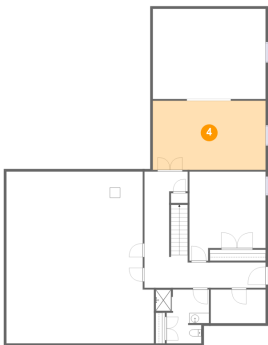
3 Floor 1 - Storage



Dimensions: 10'8" x 6'6"  
Area: 70 sq. ft  
Counted as living area: No

Heated: No  
Finished: No  
Enclosed: No  
Contiguous: Yes  
Permitted: Yes  
Wet space: No  
Addition: No  
Conversion: No

4 Floor 1 - Room



Dimensions: 21'11" x 13'5"  
Area: 294 sq. ft  
Counted as living area: Yes

Heated: Yes  
Finished: Yes  
Enclosed: Yes  
Contiguous: Yes  
Permitted: Yes  
Wet space: No  
Addition: No  
Conversion: No

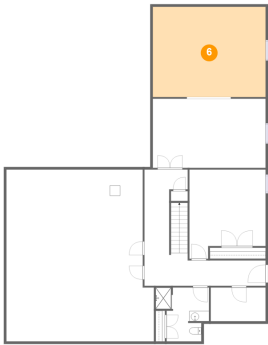
5 Floor 1 - Bath



Dimensions: 10'4" x 10'5"  
Area: 87 sq. ft  
Counted as living area: Yes

Heated: Yes  
Finished: Yes  
Enclosed: Yes  
Contiguous: Yes  
Permitted: Yes  
Wet space: Yes  
Addition: No  
Conversion: No

6 Floor 1 - Room



Dimensions: 21'11" x 17'6"  
Area: 383 sq. ft  
Counted as living area: Yes

Heated: Yes  
Finished: Yes  
Enclosed: Yes  
Contiguous: Yes  
Permitted: Yes  
Wet space: No  
Addition: No  
Conversion: No

7 Floor 1 - Bedroom



Dimensions: 14'9" x 17'4"  
Area: 228 sq. ft  
Counted as living area: Yes

Heated: Yes  
Finished: Yes  
Enclosed: Yes  
Contiguous: Yes  
Permitted: Yes  
Wet space: No  
Addition: No  
Conversion: No

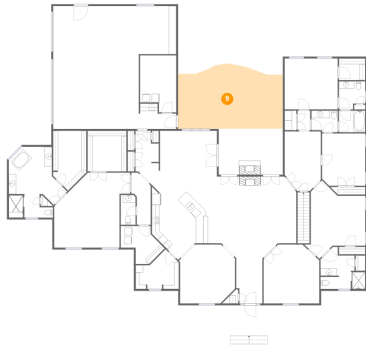
8 Floor 2 - Laundry



Dimensions: 10'9" x 10'4"  
Area: 80 sq. ft  
Counted as living area: Yes

Heated: Yes  
Finished: Yes  
Enclosed: Yes  
Contiguous: Yes  
Permitted: Yes  
Wet space: No  
Addition: No  
Conversion: No

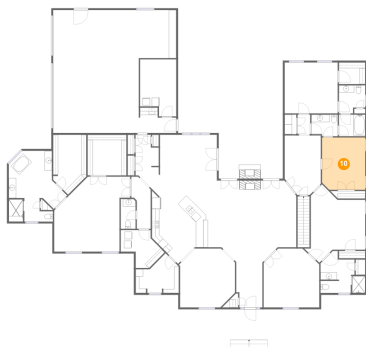
## 9 Floor 2 - Patio



Dimensions: 28'5" x 17'8"  
Area: 454 sq. ft  
Counted as living area: No

Heated: No  
Finished: Yes  
Enclosed: No  
Contiguous: Yes  
Permitted: Yes  
Wet space: No  
Addition: No  
Conversion: No

## 10 Floor 2 - Bedroom



Dimensions: 11'9" x 14'2"  
Area: 165 sq. ft  
Counted as living area: Yes

Heated: Yes  
Finished: Yes  
Enclosed: Yes  
Contiguous: Yes  
Permitted: Yes  
Wet space: No  
Addition: No  
Conversion: No

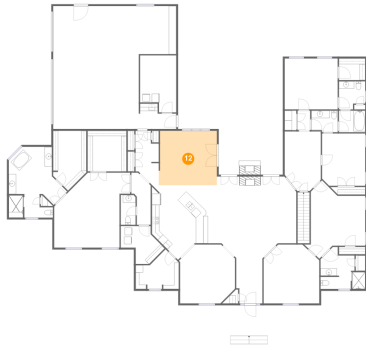
## 11 Floor 2 - Bedroom



Dimensions: 14'5" x 13'10"  
Area: 200 sq. ft  
Counted as living area: Yes

Heated: Yes  
Finished: Yes  
Enclosed: Yes  
Contiguous: Yes  
Permitted: Yes  
Wet space: No  
Addition: No  
Conversion: No

## 12 Floor 2 - Dining Area



Dimensions: 15'10" x 14'9"  
Area: 230 sq. ft  
Counted as living area: Yes

Heated: Yes  
Finished: Yes  
Enclosed: Yes  
Contiguous: Yes  
Permitted: Yes  
Wet space: No  
Addition: No  
Conversion: No

## 13 Floor 2 - Room



Dimensions: 14'11" x 16'0"  
Area: 215 sq. ft  
Counted as living area: Yes

Heated: Yes  
Finished: Yes  
Enclosed: Yes  
Contiguous: Yes  
Permitted: Yes  
Wet space: No  
Addition: No  
Conversion: No

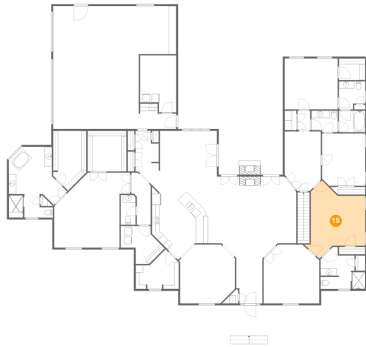
## 14 Floor 2 - W.I.C.



Dimensions: 7'2" x 5'10"  
Area: 42 sq. ft  
Counted as living area: Yes

Heated: Yes  
Finished: Yes  
Enclosed: Yes  
Contiguous: Yes  
Permitted: Yes  
Wet space: No  
Addition: No  
Conversion: No

## 15 Floor 2 - Bedroom



Dimensions: 14'9" x 20'6"  
Area: 231 sq. ft  
Counted as living area: Yes

Heated: Yes  
Finished: Yes  
Enclosed: Yes  
Contiguous: Yes  
Permitted: Yes  
Wet space: No  
Addition: No  
Conversion: No

## 16 Floor 2 - Bath



Dimensions: 7'2" x 5'10"  
Area: 42 sq. ft  
Counted as living area: Yes

Heated: Yes  
Finished: Yes  
Enclosed: Yes  
Contiguous: Yes  
Permitted: Yes  
Wet space: Yes  
Addition: No  
Conversion: No

## 17 Floor 2 - Hall



Dimensions: 9'10" x 16'2"  
Area: 147 sq. ft  
Counted as living area: Yes

Heated: Yes  
Finished: Yes  
Enclosed: Yes  
Contiguous: Yes  
Permitted: Yes  
Wet space: No  
Addition: No  
Conversion: No

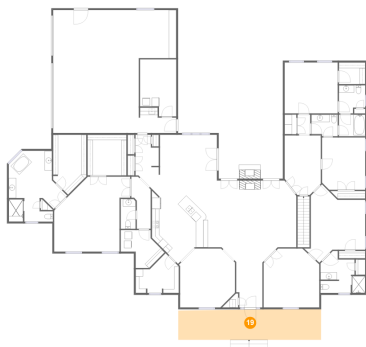
## 18 Floor 2 - Room



Dimensions: 9'10" x 15'6"  
Area: 139 sq. ft  
Counted as living area: No

Heated: Yes  
Finished: No  
Enclosed: Yes  
Contiguous: Yes  
Permitted: Yes  
Wet space: No  
Addition: No  
Conversion: No

## 19 Floor 2 - Porch



Dimensions: 38'10" x 8'4"  
Area: 318 sq. ft  
Counted as living area: No

Heated: No  
Finished: Yes  
Enclosed: No  
Contiguous: Yes  
Permitted: Yes  
Wet space: No  
Addition: No  
Conversion: No

## 20 Floor 2 - Hall



Dimensions: 6'3" x 13'5"  
Area: 75 sq. ft  
Counted as living area: Yes

Heated: Yes  
Finished: Yes  
Enclosed: Yes  
Contiguous: Yes  
Permitted: Yes  
Wet space: No  
Addition: No  
Conversion: No

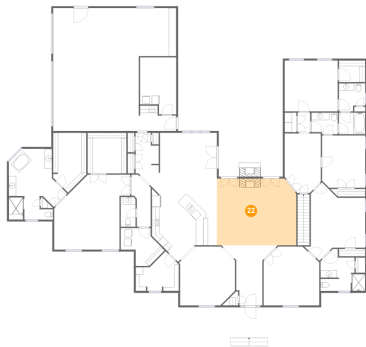
## 21 Floor 2 - Hall



Dimensions: 5'3" x 14'0"  
Area: 56 sq. ft  
Counted as living area: Yes

Heated: Yes  
Finished: Yes  
Enclosed: Yes  
Contiguous: Yes  
Permitted: Yes  
Wet space: No  
Addition: No  
Conversion: No

## 22 Floor 2 - Living Room



Dimensions: 21'7" x 18'2"  
Area: 385 sq. ft  
Counted as living area: Yes

Heated: Yes  
Finished: Yes  
Enclosed: Yes  
Contiguous: Yes  
Permitted: Yes  
Wet space: No  
Addition: No  
Conversion: No

## 23 Floor 2 - W.I.C.



Dimensions: 10'7" x 11'0"  
Area: 117 sq. ft  
Counted as living area: Yes

Heated: Yes  
Finished: Yes  
Enclosed: Yes  
Contiguous: Yes  
Permitted: Yes  
Wet space: No  
Addition: No  
Conversion: No

24 Floor 2 - WC



Dimensions: 4'0" x 8'1"  
Area: 32 sq. ft  
Counted as living area: Yes

Heated: Yes  
Finished: Yes  
Enclosed: Yes  
Contiguous: Yes  
Permitted: Yes  
Wet space: Yes  
Addition: No  
Conversion: No

25 Floor 2 - WC



Dimensions: 7'2" x 7'8"  
Area: 49 sq. ft  
Counted as living area: Yes

Heated: Yes  
Finished: Yes  
Enclosed: Yes  
Contiguous: Yes  
Permitted: Yes  
Wet space: Yes  
Addition: No  
Conversion: No

26 Floor 2 - Primary Bath



Dimensions: 15'10" x 19'3"  
Area: 225 sq. ft  
Counted as living area: Yes

Heated: Yes  
Finished: Yes  
Enclosed: Yes  
Contiguous: Yes  
Permitted: Yes  
Wet space: Yes  
Addition: No  
Conversion: No

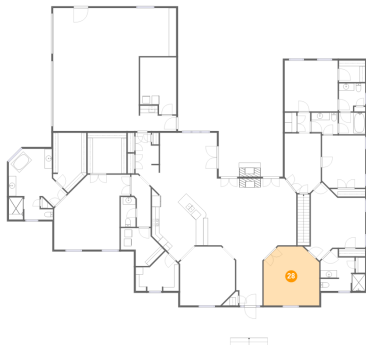
## 27 Floor 2 - Garage



Dimensions: 33'6" x 33'5"  
Area: 966 sq. ft  
Counted as living area: No

Heated: No  
Finished: No  
Enclosed: Yes  
Contiguous: Yes  
Permitted: Yes  
Wet space: No  
Addition: No  
Conversion: No

## 28 Floor 2 - Office



Dimensions: 15'2" x 16'0"  
Area: 224 sq. ft  
Counted as living area: Yes

Heated: Yes  
Finished: Yes  
Enclosed: Yes  
Contiguous: Yes  
Permitted: Yes  
Wet space: No  
Addition: No  
Conversion: No

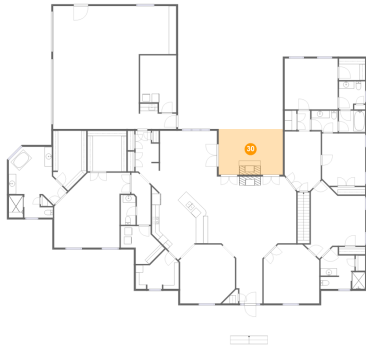
## 29 Floor 2 - Pantry



Dimensions: 11'9" x 10'9"  
Area: 93 sq. ft  
Counted as living area: Yes

Heated: Yes  
Finished: Yes  
Enclosed: Yes  
Contiguous: Yes  
Permitted: Yes  
Wet space: No  
Addition: No  
Conversion: No

## 30 Floor 2 - Covered Patio



Dimensions: 17'5" x 12'5"  
Area: 216 sq. ft  
Counted as living area: No

Heated: No  
Finished: Yes  
Enclosed: No  
Contiguous: Yes  
Permitted: Yes  
Wet space: No  
Addition: No  
Conversion: No

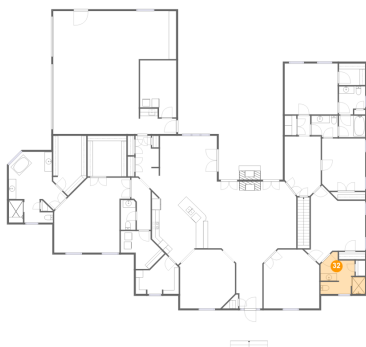
## 31 Floor 2 - Foyer



Dimensions: 12'10" x 16'4"  
Area: 129 sq. ft  
Counted as living area: Yes

Heated: Yes  
Finished: Yes  
Enclosed: Yes  
Contiguous: Yes  
Permitted: Yes  
Wet space: No  
Addition: No  
Conversion: No

## 32 Floor 2 - Bath



Dimensions: 12'2" x 10'11"  
Area: 100 sq. ft  
Counted as living area: Yes

Heated: Yes  
Finished: Yes  
Enclosed: Yes  
Contiguous: Yes  
Permitted: Yes  
Wet space: Yes  
Addition: No  
Conversion: No

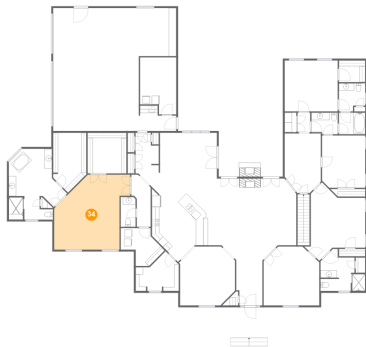
### 33 Floor 2 - WC



Dimensions: 7'2" x 5'10"  
Area: 40 sq. ft  
Counted as living area: Yes

Heated: Yes  
Finished: Yes  
Enclosed: Yes  
Contiguous: Yes  
Permitted: Yes  
Wet space: Yes  
Addition: No  
Conversion: No

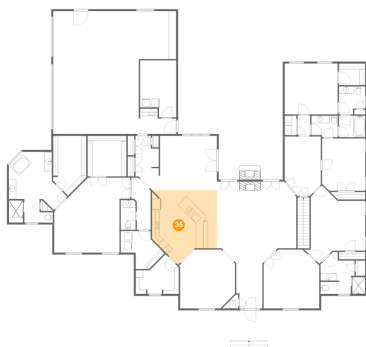
### 34 Floor 2 - Primary Bedroom



Dimensions: 17'9" x 20'4"  
Area: 336 sq. ft  
Counted as living area: Yes

Heated: Yes  
Finished: Yes  
Enclosed: Yes  
Contiguous: Yes  
Permitted: Yes  
Wet space: No  
Addition: No  
Conversion: No

### 35 Floor 2 - Kitchen



Dimensions: 17'8" x 20'3"  
Area: 295 sq. ft  
Counted as living area: Yes

Heated: Yes  
Finished: Yes  
Enclosed: Yes  
Contiguous: Yes  
Permitted: Yes  
Wet space: No  
Addition: No  
Conversion: No

**36** Floor 2 - W.I.C.

---



**Dimensions:** 9'0" x 16'3"

**Area:** 126 sq. ft

**Counted as living area:** Yes

**Heated:** Yes

**Finished:** Yes

**Enclosed:** Yes

**Contiguous:** Yes

**Permitted:** Yes

**Wet space:** No

**Addition:** No

**Conversion:** No