


285 Lakeside Way, Bowling Green, Warren County, Kentucky, United States, 42103



Property summary


 **1** Garages

 **4** Bedrooms

 **4** Bathrooms

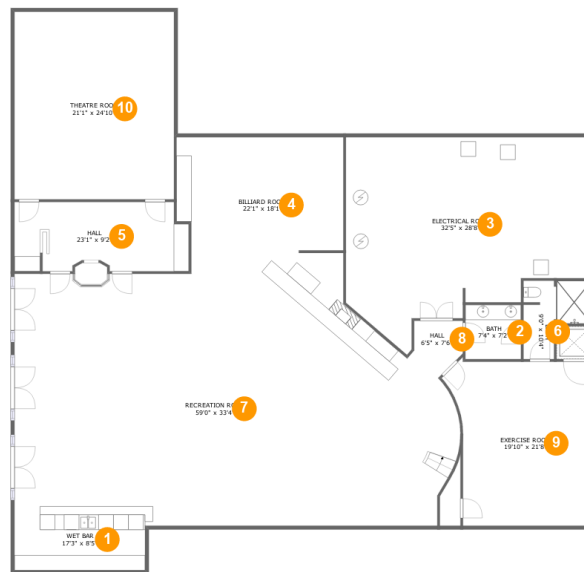
 **2** Half baths

 **4** Floors

 **11,778** Gross living area sqft

 **14,536** Total sqft

285 Lakeside Way, Bowling Green, Warren County, Kentucky, United States, 42103



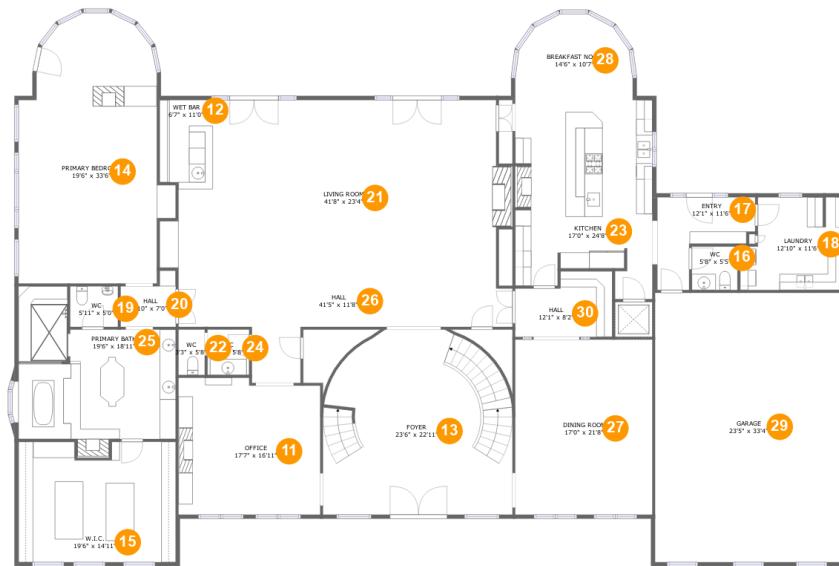
Room dimensions

Floor 1

Total sqft: 4520 Living area: 3769

#		Dimensions	sqft	Counted as living area
1	Bar	17'3" x 8'5"	148 sq. ft	Yes
2	Bath	7'4" x 7'2"	53 sq. ft	Yes
3	Room	32'5" x 28'8"	725 sq. ft	No
4	Room	22'1" x 18'1"	383 sq. ft	Yes
5	Hall	23'1" x 9'2"	199 sq. ft	Yes
6	Bath	9'0" x 10'4"	69 sq. ft	Yes
7	Recreation Room	59'0" x 33'4"	1738 sq. ft	Yes
8	Hall	6'5" x 7'6"	43 sq. ft	Yes
9	Exercise Room	19'10" x 21'8"	379 sq. ft	Yes
10	Media Room	21'1" x 24'10"	523 sq. ft	Yes

285 Lakeside Way, Bowling Green, Warren County, Kentucky, United States, 42103



Room dimensions

Floor 2

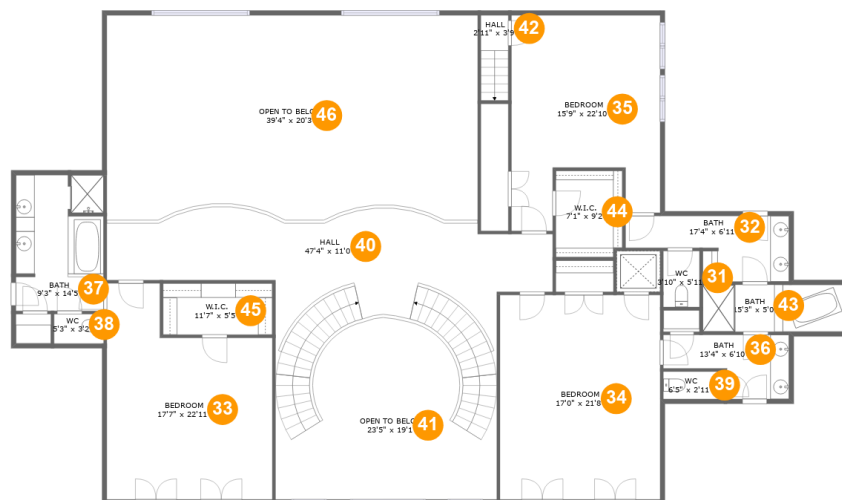
Total sqft: 5673 Living area: 4856

#		Dimensions	sqft	Counted as living area
11	Office	17'7" x 16'11"	289 sq. ft	Yes
12	Bar	6'7" x 11'0"	71 sq. ft	Yes
13	Entry	23'6" x 22'11"	487 sq. ft	Yes
14	Bedroom	19'6" x 33'6"	536 sq. ft	Yes
15	Cl	19'6" x 14'11"	280 sq. ft	Yes
16	Bath	5'8" x 5'5"	30 sq. ft	Yes
17	Entry	12'1" x 11'6"	91 sq. ft	Yes
18	Utility	12'10" x 11'6"	133 sq. ft	Yes
19	Bath	5'11" x 5'0"	30 sq. ft	Yes
20	Hall	6'10" x 7'0"	38 sq. ft	Yes
21	Living Room	41'8" x 23'4"	900 sq. ft	Yes

**285 Lakeside Way, Bowling Green, Warren County,
Kentucky, United States, 42103**

#		Dimensions	sqft	Counted as living area
22	Bath	3'3" x 5'8"	18 sq. ft	Yes
23	Kitchen	17'0" x 24'8"	380 sq. ft	Yes
24	Bath	5'2" x 5'8"	29 sq. ft	Yes
25	Bath	19'6" x 18'11"	306 sq. ft	Yes
26	Hall	41'5" x 11'8"	239 sq. ft	Yes
27	Dining Room	17'0" x 21'8"	368 sq. ft	Yes
28	Nook	14'6" x 10'7"	132 sq. ft	Yes
29	Garage	23'5" x 33'4"	780 sq. ft	No
30	Hall	12'1" x 8'2"	86 sq. ft	Yes

285 Lakeside Way, Bowling Green, Warren County, Kentucky, United States, 42103



Room dimensions

Floor 3

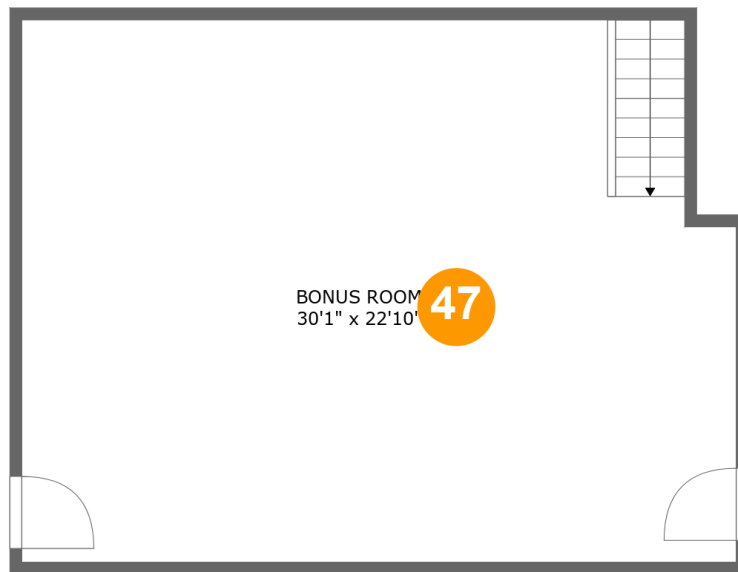
Total sqft: 3623 Living area: 2433

#		Dimensions	sqft	Counted as living area
31	Bath	3'10" x 5'11"	23 sq. ft	Yes
32	Bath	17'4" x 6'11"	91 sq. ft	Yes
33	Bedroom	17'7" x 22'11"	333 sq. ft	Yes
34	Bedroom	17'0" x 21'8"	369 sq. ft	Yes
35	Bedroom	15'9" x 22'10"	302 sq. ft	Yes
36	Bath	13'4" x 6'10"	69 sq. ft	Yes
37	Bath	9'3" x 14'5"	132 sq. ft	Yes
38	Bath	5'3" x 3'2"	16 sq. ft	Yes
39	Bath	6'5" x 2'11"	19 sq. ft	Yes
40	Hall	47'4" x 11'0"	548 sq. ft	Yes
41	Open To Below	23'5" x 19'1"	325 sq. ft	No

**285 Lakeside Way, Bowling Green, Warren County,
Kentucky, United States, 42103**

#		Dimensions	sqft	Counted as living area
42	Hall	2'11" x 3'9"	26 sq. ft	Yes
43	Bath	15'3" x 5'0"	76 sq. ft	Yes
44	Cl	7'1" x 9'2"	64 sq. ft	Yes
45	Cl	11'7" x 5'5"	63 sq. ft	Yes
46	Open To Below	39'4" x 20'3"	825 sq. ft	No

**285 Lakeside Way, Bowling Green, Warren County,
Kentucky, United States, 42103**



Room dimensions

Floor 4

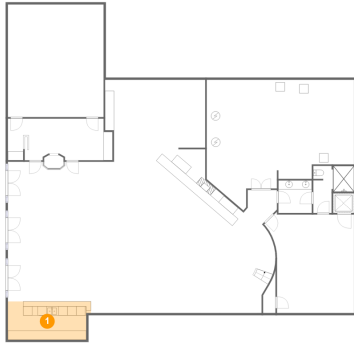
Total sqft: 720

Living area: 720

#		Dimensions	sqft	Counted as living area
47	Room	30'1" x 22'10"	666 sq. ft	Yes

285 Lakeside Way, Bowling Green, Warren County, Kentucky, United States, 42103

1 Floor 1 - Bar



Dimensions: 17'3" x 8'5"
Area: 148 sq. ft
Counted as living area: Yes

Heated: Yes
Finished: Yes
Enclosed: Yes
Contiguous: Yes
Permitted: Yes
Wet space: No
Addition: No
Conversion: No

2 Floor 1 - Bath

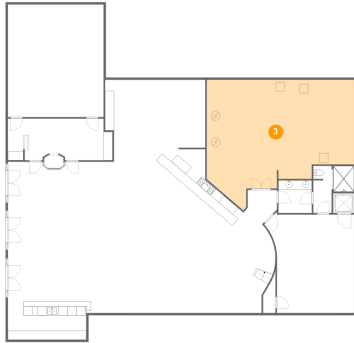


Dimensions: 7'4" x 7'2"
Area: 53 sq. ft
Counted as living area: Yes

Heated: Yes
Finished: Yes
Enclosed: Yes
Contiguous: Yes
Permitted: Yes
Wet space: Yes
Addition: No
Conversion: No

285 Lakeside Way, Bowling Green, Warren County, Kentucky, United States, 42103

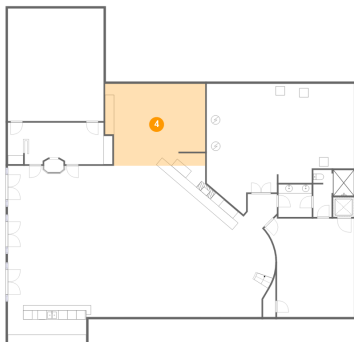
3 Floor 1 - Room



Dimensions: 32'5" x 28'8"
Area: 725 sq. ft
Counted as living area: No

Heated: No
Finished: No
Enclosed: Yes
Contiguous: Yes
Permitted: Yes
Wet space: No
Addition: No
Conversion: No

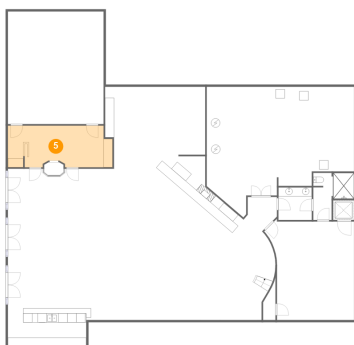
4 Floor 1 - Room



Dimensions: 22'1" x 18'1"
Area: 383 sq. ft
Counted as living area: Yes

Heated: Yes
Finished: Yes
Enclosed: Yes
Contiguous: Yes
Permitted: Yes
Wet space: No
Addition: No
Conversion: No

5 Floor 1 - Hall

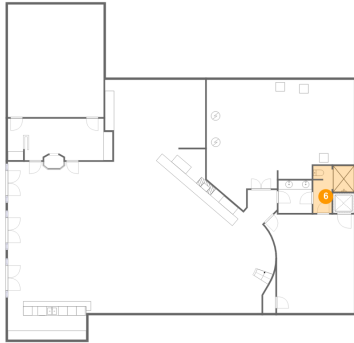


Dimensions: 23'1" x 9'2"
Area: 199 sq. ft
Counted as living area: Yes

Heated: Yes
Finished: Yes
Enclosed: Yes
Contiguous: Yes
Permitted: Yes
Wet space: No
Addition: No
Conversion: No

285 Lakeside Way, Bowling Green, Warren County, Kentucky, United States, 42103

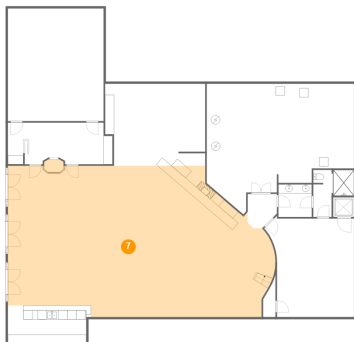
6 Floor 1 - Bath



Dimensions: 9'0" x 10'4"
Area: 69 sq. ft
Counted as living area: Yes

Heated: Yes
Finished: Yes
Enclosed: Yes
Contiguous: Yes
Permitted: Yes
Wet space: Yes
Addition: No
Conversion: No

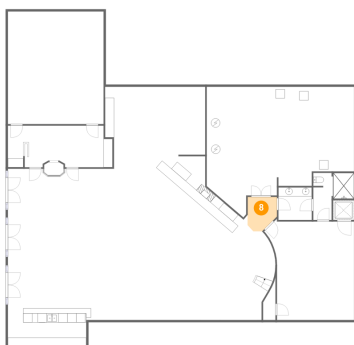
7 Floor 1 - Recreation Room



Dimensions: 59'0" x 33'4"
Area: 1738 sq. ft
Counted as living area: Yes

Heated: Yes
Finished: Yes
Enclosed: Yes
Contiguous: Yes
Permitted: Yes
Wet space: No
Addition: No
Conversion: No

8 Floor 1 - Hall

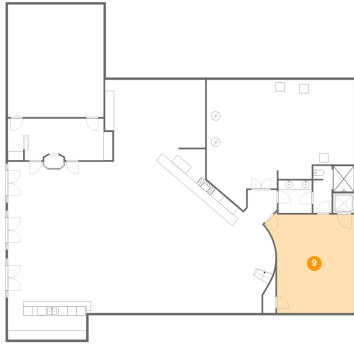


Dimensions: 6'5" x 7'6"
Area: 43 sq. ft
Counted as living area: Yes

Heated: Yes
Finished: Yes
Enclosed: Yes
Contiguous: Yes
Permitted: Yes
Wet space: No
Addition: No
Conversion: No

285 Lakeside Way, Bowling Green, Warren County, Kentucky, United States, 42103

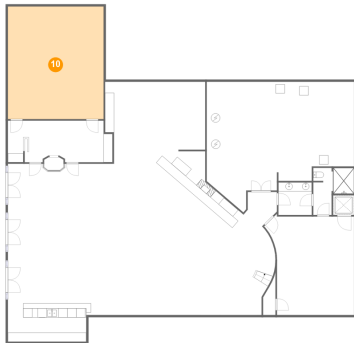
9 Floor 1 - Exercise Room



Dimensions: 19'10" x 21'8"
Area: 379 sq. ft
Counted as living area: Yes

Heated: Yes
Finished: Yes
Enclosed: Yes
Contiguous: Yes
Permitted: Yes
Wet space: No
Addition: No
Conversion: No

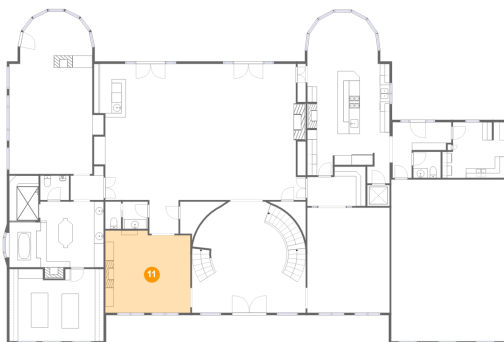
10 Floor 1 - Media Room



Dimensions: 21'1" x 24'10"
Area: 523 sq. ft
Counted as living area: Yes

Heated: Yes
Finished: Yes
Enclosed: Yes
Contiguous: Yes
Permitted: Yes
Wet space: No
Addition: No
Conversion: No

11 Floor 2 - Office

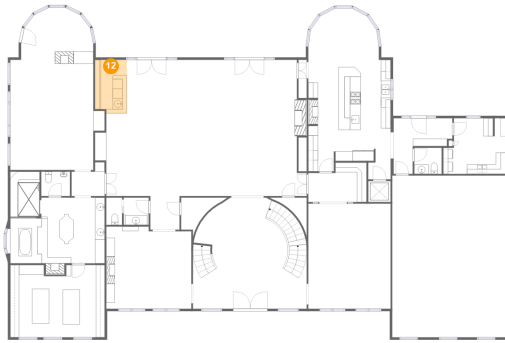


Dimensions: 17'7" x 16'11"
Area: 289 sq. ft
Counted as living area: Yes

Heated: Yes
Finished: Yes
Enclosed: Yes
Contiguous: Yes
Permitted: Yes
Wet space: No
Addition: No
Conversion: No

285 Lakeside Way, Bowling Green, Warren County, Kentucky, United States, 42103

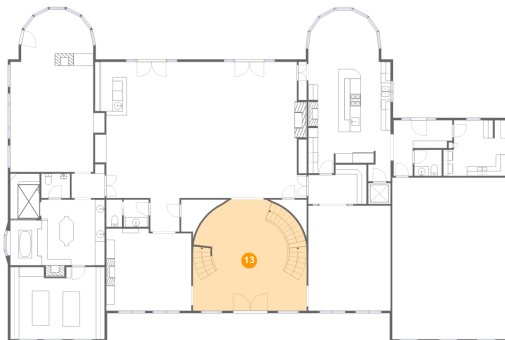
12 Floor 2 - Bar



Dimensions: 6'7" x 11'0"
Area: 71 sq. ft
Counted as living area: Yes

Heated: Yes
Finished: Yes
Enclosed: Yes
Contiguous: Yes
Permitted: Yes
Wet space: No
Addition: No
Conversion: No

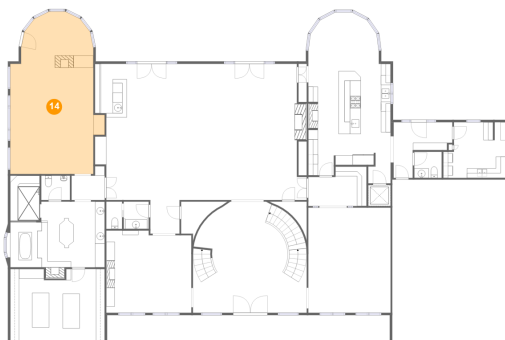
13 Floor 2 - Entry



Dimensions: 23'6" x 22'11"
Area: 487 sq. ft
Counted as living area: Yes

Heated: Yes
Finished: Yes
Enclosed: Yes
Contiguous: Yes
Permitted: Yes
Wet space: No
Addition: No
Conversion: No

14 Floor 2 - Bedroom

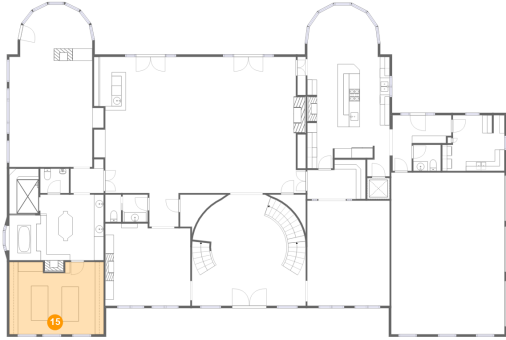


Dimensions: 19'6" x 33'6"
Area: 536 sq. ft
Counted as living area: Yes

Heated: Yes
Finished: Yes
Enclosed: Yes
Contiguous: Yes
Permitted: Yes
Wet space: No
Addition: No
Conversion: No

285 Lakeside Way, Bowling Green, Warren County, Kentucky, United States, 42103

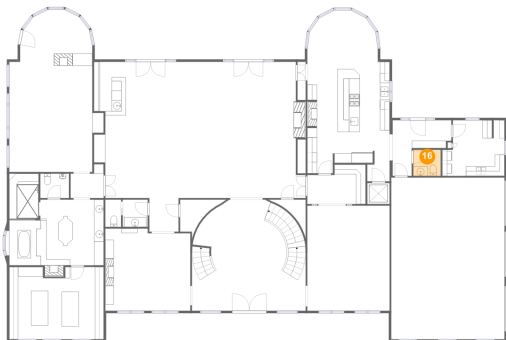
15 Floor 2 - Cl



Dimensions: 19'6" x 14'11"
Area: 280 sq. ft
Counted as living area: Yes

Heated: Yes
Finished: Yes
Enclosed: Yes
Contiguous: Yes
Permitted: Yes
Wet space: No
Addition: No
Conversion: No

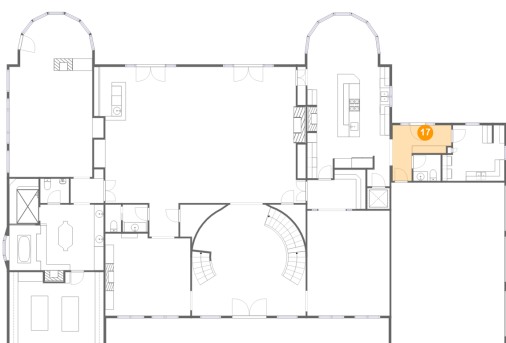
16 Floor 2 - Bath



Dimensions: 5'8" x 5'5"
Area: 30 sq. ft
Counted as living area: Yes

Heated: Yes
Finished: Yes
Enclosed: Yes
Contiguous: Yes
Permitted: Yes
Wet space: Yes
Addition: No
Conversion: No

17 Floor 2 - Entry

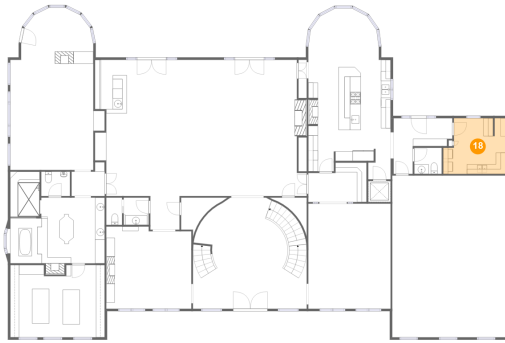


Dimensions: 12'1" x 11'6"
Area: 91 sq. ft
Counted as living area: Yes

Heated: Yes
Finished: Yes
Enclosed: Yes
Contiguous: Yes
Permitted: Yes
Wet space: No
Addition: No
Conversion: No

285 Lakeside Way, Bowling Green, Warren County, Kentucky, United States, 42103

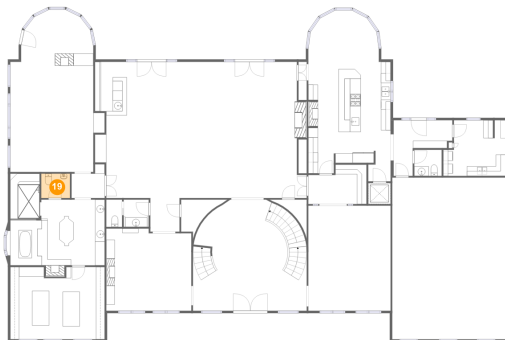
18 Floor 2 - Utility



Dimensions: 12'10" x 11'6"
Area: 133 sq. ft
Counted as living area: Yes

Heated: Yes
Finished: Yes
Enclosed: Yes
Contiguous: Yes
Permitted: Yes
Wet space: No
Addition: No
Conversion: No

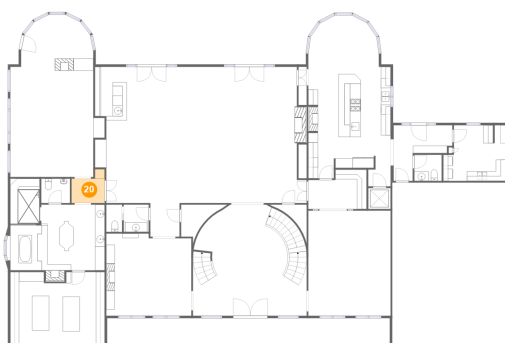
19 Floor 2 - Bath



Dimensions: 5'11" x 5'0"
Area: 30 sq. ft
Counted as living area: Yes

Heated: Yes
Finished: Yes
Enclosed: Yes
Contiguous: Yes
Permitted: Yes
Wet space: Yes
Addition: No
Conversion: No

20 Floor 2 - Hall

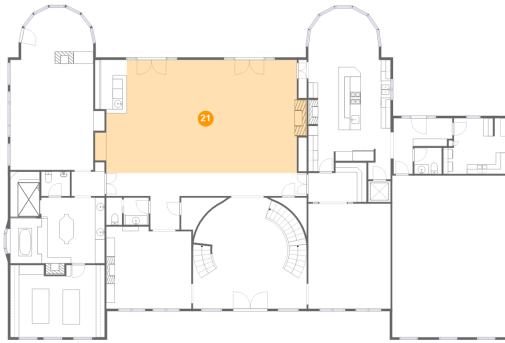


Dimensions: 6'10" x 7'0"
Area: 38 sq. ft
Counted as living area: Yes

Heated: Yes
Finished: Yes
Enclosed: Yes
Contiguous: Yes
Permitted: Yes
Wet space: No
Addition: No
Conversion: No

285 Lakeside Way, Bowling Green, Warren County, Kentucky, United States, 42103

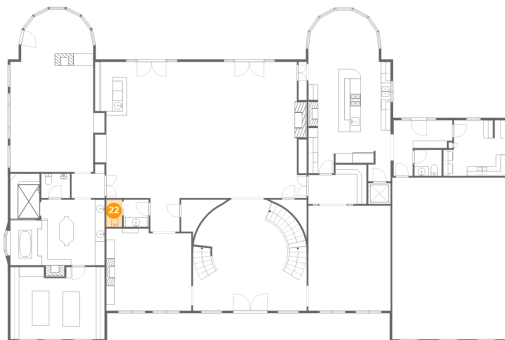
21 Floor 2 - Living Room



Dimensions: 41'8" x 23'4"
Area: 900 sq. ft
Counted as living area: Yes

Heated: Yes
Finished: Yes
Enclosed: Yes
Contiguous: Yes
Permitted: Yes
Wet space: No
Addition: No
Conversion: No

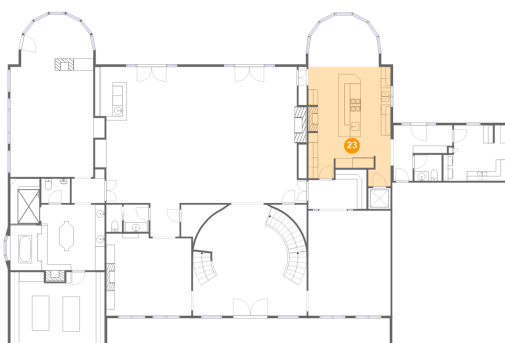
22 Floor 2 - Bath



Dimensions: 3'3" x 5'8"
Area: 18 sq. ft
Counted as living area: Yes

Heated: Yes
Finished: Yes
Enclosed: Yes
Contiguous: Yes
Permitted: Yes
Wet space: No
Addition: No
Conversion: No

23 Floor 2 - Kitchen

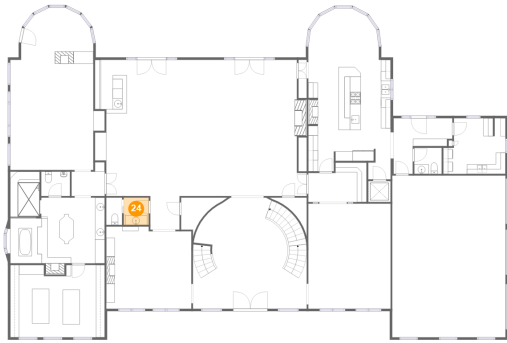


Dimensions: 17'0" x 24'8"
Area: 380 sq. ft
Counted as living area: Yes

Heated: Yes
Finished: Yes
Enclosed: Yes
Contiguous: Yes
Permitted: Yes
Wet space: No
Addition: No
Conversion: No

285 Lakeside Way, Bowling Green, Warren County, Kentucky, United States, 42103

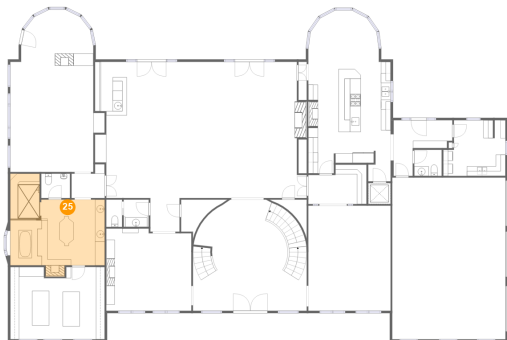
24 Floor 2 - Bath



Dimensions: 5'2" x 5'8"
Area: 29 sq. ft
Counted as living area: Yes

Heated: Yes
Finished: Yes
Enclosed: Yes
Contiguous: Yes
Permitted: Yes
Wet space: Yes
Addition: No
Conversion: No

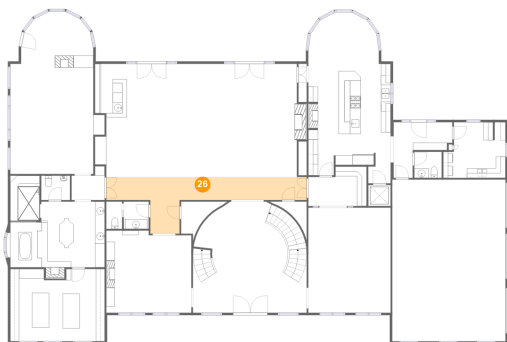
25 Floor 2 - Bath



Dimensions: 19'6" x 18'11"
Area: 306 sq. ft
Counted as living area: Yes

Heated: Yes
Finished: Yes
Enclosed: Yes
Contiguous: Yes
Permitted: Yes
Wet space: Yes
Addition: No
Conversion: No

26 Floor 2 - Hall

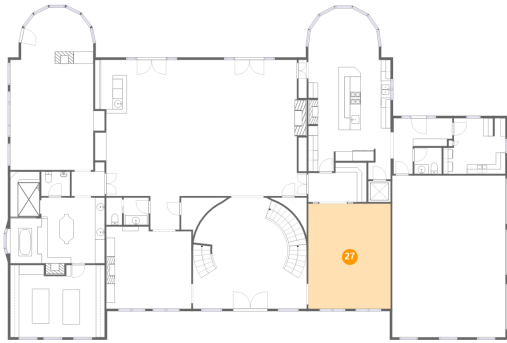


Dimensions: 41'5" x 11'8"
Area: 239 sq. ft
Counted as living area: Yes

Heated: Yes
Finished: Yes
Enclosed: Yes
Contiguous: Yes
Permitted: Yes
Wet space: No
Addition: No
Conversion: No

285 Lakeside Way, Bowling Green, Warren County, Kentucky, United States, 42103

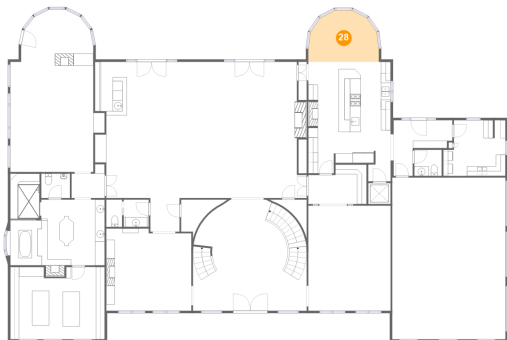
27 Floor 2 - Dining Room



Dimensions: 17'0" x 21'8"
Area: 368 sq. ft
Counted as living area: Yes

Heated: Yes
Finished: Yes
Enclosed: Yes
Contiguous: Yes
Permitted: Yes
Wet space: No
Addition: No
Conversion: No

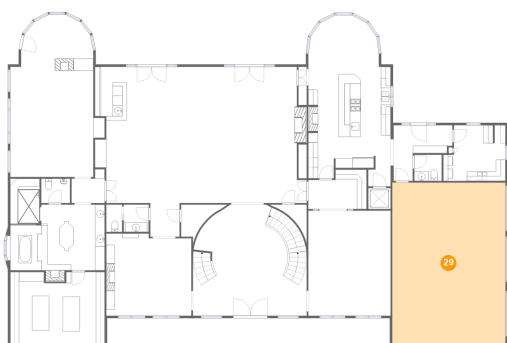
28 Floor 2 - Nook



Dimensions: 14'6" x 10'7"
Area: 132 sq. ft
Counted as living area: Yes

Heated: Yes
Finished: Yes
Enclosed: Yes
Contiguous: Yes
Permitted: Yes
Wet space: No
Addition: No
Conversion: No

29 Floor 2 - Garage

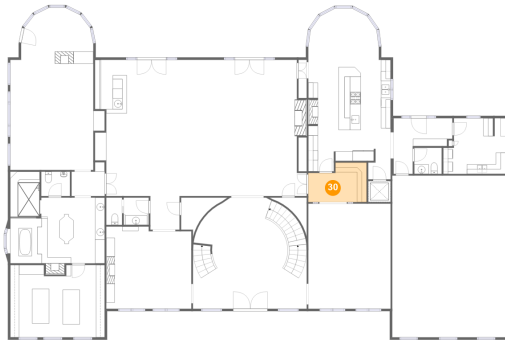


Dimensions: 23'5" x 33'4"
Area: 780 sq. ft
Counted as living area: No

Heated: No
Finished: No
Enclosed: Yes
Contiguous: Yes
Permitted: Yes
Wet space: No
Addition: No
Conversion: No

285 Lakeside Way, Bowling Green, Warren County, Kentucky, United States, 42103

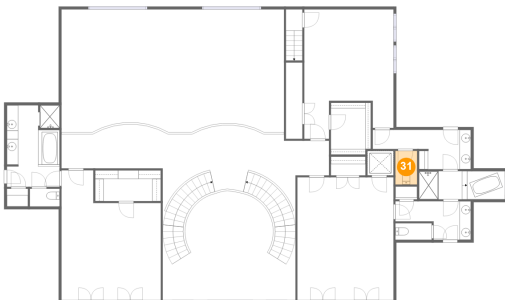
30 Floor 2 - Hall



Dimensions: 12'1" x 8'2"
Area: 86 sq. ft
Counted as living area: Yes

Heated: Yes
Finished: Yes
Enclosed: Yes
Contiguous: Yes
Permitted: Yes
Wet space: No
Addition: No
Conversion: No

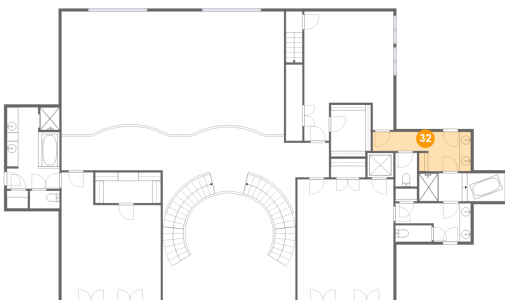
31 Floor 3 - Bath



Dimensions: 3'10" x 5'11"
Area: 23 sq. ft
Counted as living area: Yes

Heated: Yes
Finished: Yes
Enclosed: Yes
Contiguous: Yes
Permitted: Yes
Wet space: Yes
Addition: No
Conversion: No

32 Floor 3 - Bath

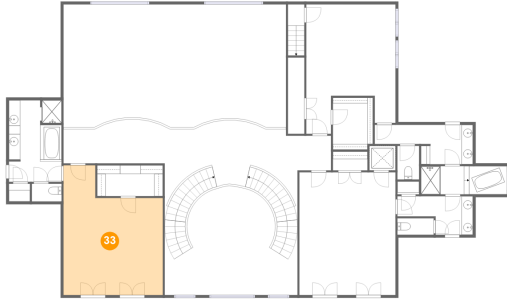


Dimensions: 17'4" x 6'11"
Area: 91 sq. ft
Counted as living area: Yes

Heated: Yes
Finished: Yes
Enclosed: Yes
Contiguous: Yes
Permitted: Yes
Wet space: Yes
Addition: No
Conversion: No

285 Lakeside Way, Bowling Green, Warren County, Kentucky, United States, 42103

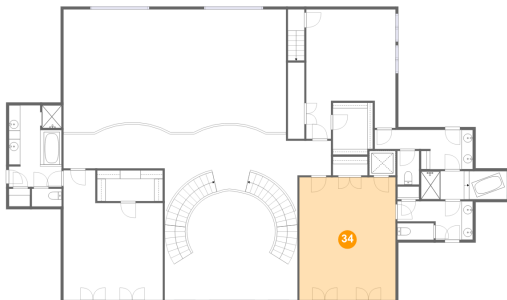
33 Floor 3 - Bedroom



Dimensions: 17'7" x 22'11"
Area: 333 sq. ft
Counted as living area: Yes

Heated: Yes
Finished: Yes
Enclosed: Yes
Contiguous: Yes
Permitted: Yes
Wet space: No
Addition: No
Conversion: No

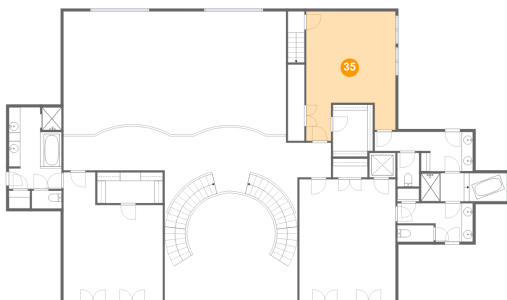
34 Floor 3 - Bedroom



Dimensions: 17'0" x 21'8"
Area: 369 sq. ft
Counted as living area: Yes

Heated: Yes
Finished: Yes
Enclosed: Yes
Contiguous: Yes
Permitted: Yes
Wet space: No
Addition: No
Conversion: No

35 Floor 3 - Bedroom



Dimensions: 15'9" x 22'10"
Area: 302 sq. ft
Counted as living area: Yes

Heated: Yes
Finished: Yes
Enclosed: Yes
Contiguous: Yes
Permitted: Yes
Wet space: No
Addition: No
Conversion: No

285 Lakeside Way, Bowling Green, Warren County, Kentucky, United States, 42103

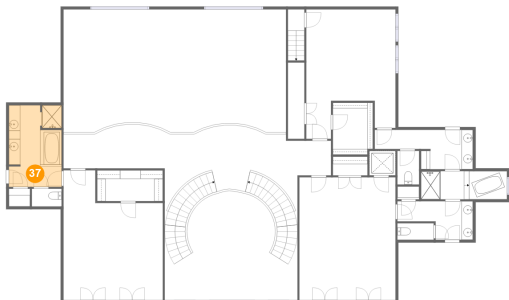
36 Floor 3 - Bath



Dimensions: 13'4" x 6'10"
Area: 69 sq. ft
Counted as living area: Yes

Heated: Yes
Finished: Yes
Enclosed: Yes
Contiguous: Yes
Permitted: Yes
Wet space: Yes
Addition: No
Conversion: No

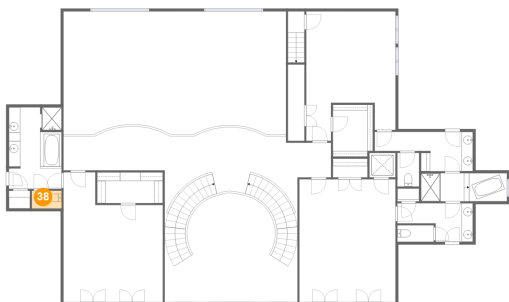
37 Floor 3 - Bath



Dimensions: 9'3" x 14'5"
Area: 132 sq. ft
Counted as living area: Yes

Heated: Yes
Finished: Yes
Enclosed: Yes
Contiguous: Yes
Permitted: Yes
Wet space: Yes
Addition: No
Conversion: No

38 Floor 3 - Bath



Dimensions: 5'3" x 3'2"
Area: 16 sq. ft
Counted as living area: Yes

Heated: Yes
Finished: Yes
Enclosed: Yes
Contiguous: Yes
Permitted: Yes
Wet space: Yes
Addition: No
Conversion: No

285 Lakeside Way, Bowling Green, Warren County, Kentucky, United States, 42103

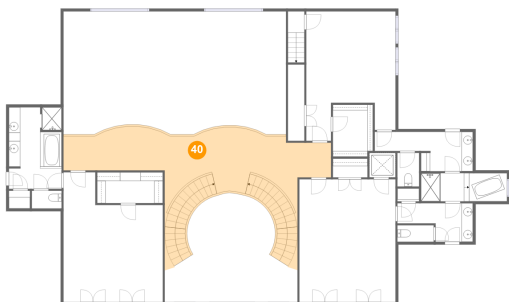
39 Floor 3 - Bath



Dimensions: 6'5" x 2'11"
Area: 19 sq. ft
Counted as living area: Yes

Heated: Yes
Finished: Yes
Enclosed: Yes
Contiguous: Yes
Permitted: Yes
Wet space: Yes
Addition: No
Conversion: No

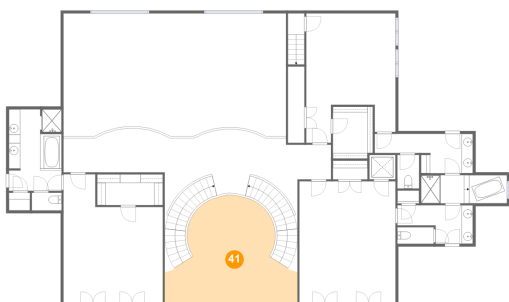
40 Floor 3 - Hall



Dimensions: 47'4" x 11'0"
Area: 548 sq. ft
Counted as living area: Yes

Heated: Yes
Finished: Yes
Enclosed: Yes
Contiguous: Yes
Permitted: Yes
Wet space: No
Addition: No
Conversion: No

41 Floor 3 - Open To Below

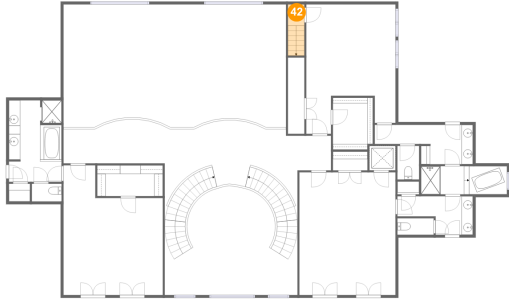


Dimensions: 23'5" x 19'1"
Area: 325 sq. ft
Counted as living area: No

Heated: No
Finished: No
Enclosed: No
Contiguous: Yes
Permitted: No
Wet space: No
Addition: No
Conversion: No

285 Lakeside Way, Bowling Green, Warren County, Kentucky, United States, 42103

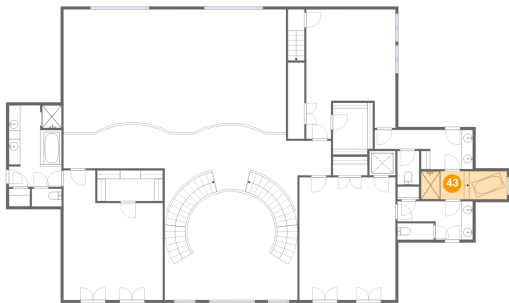
42 Floor 3 - Hall



Dimensions: 2'11" x 3'9"
Area: 26 sq. ft
Counted as living area: Yes

Heated: Yes
Finished: Yes
Enclosed: Yes
Contiguous: Yes
Permitted: Yes
Wet space: No
Addition: No
Conversion: No

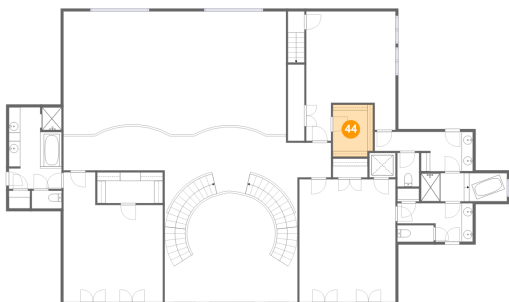
43 Floor 3 - Bath



Dimensions: 15'3" x 5'0"
Area: 76 sq. ft
Counted as living area: Yes

Heated: Yes
Finished: Yes
Enclosed: Yes
Contiguous: Yes
Permitted: Yes
Wet space: Yes
Addition: No
Conversion: No

44 Floor 3 - Cl

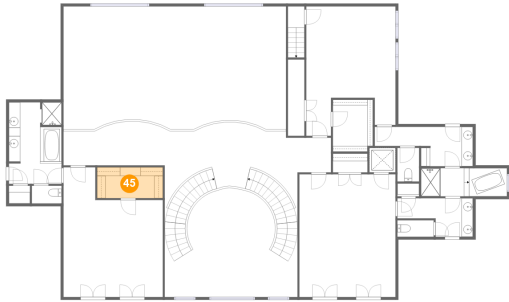


Dimensions: 7'1" x 9'2"
Area: 64 sq. ft
Counted as living area: Yes

Heated: Yes
Finished: Yes
Enclosed: Yes
Contiguous: Yes
Permitted: Yes
Wet space: No
Addition: No
Conversion: No

285 Lakeside Way, Bowling Green, Warren County, Kentucky, United States, 42103

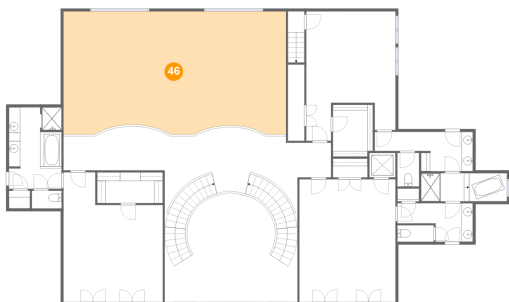
45 Floor 3 - Cl



Dimensions: 11'7" x 5'5"
Area: 63 sq. ft
Counted as living area: Yes

Heated: Yes
Finished: Yes
Enclosed: Yes
Contiguous: Yes
Permitted: Yes
Wet space: No
Addition: No
Conversion: No

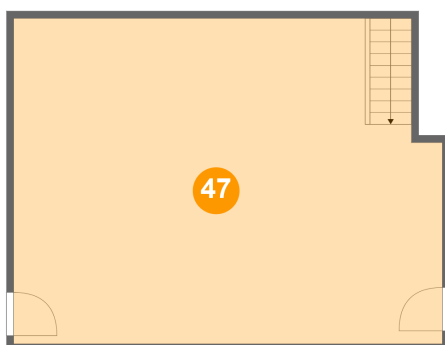
46 Floor 3 - Open To Below



Dimensions: 39'4" x 20'3"
Area: 825 sq. ft
Counted as living area: No

Heated: No
Finished: No
Enclosed: No
Contiguous: Yes
Permitted: No
Wet space: No
Addition: No
Conversion: No

47 Floor 4 - Room



Dimensions: 30'1" x 22'10"
Area: 666 sq. ft
Counted as living area: Yes

Heated: Yes
Finished: Yes
Enclosed: Yes
Contiguous: Yes
Permitted: Yes
Wet space: No
Addition: No
Conversion: No