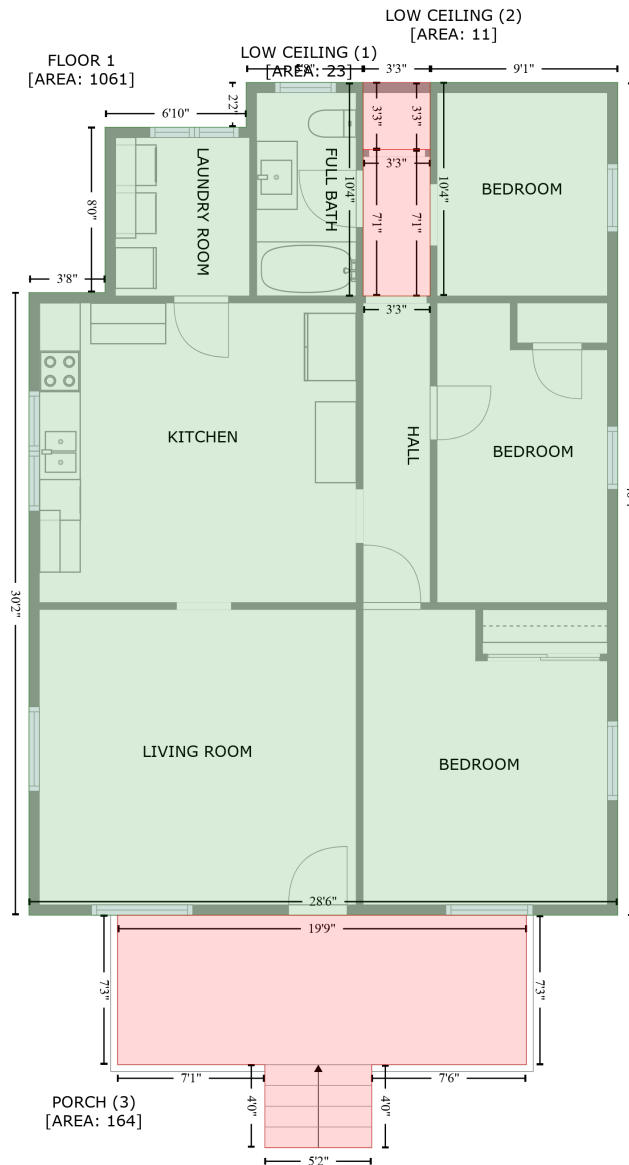


# 140 Happiness Drive, Scottsboro, Jackson County, Alabama, United States, 35768

Gross Living Area: 1061 sq. ft



Space	Area (sq. ft)	Calculation <small>Coordinate Polygon Area Algorithm using inches</small>
FLOOR 1 (Living area)	1061	$-\left((395.1 + 395.1) * (-152.7 - -28.7) + (395.1 + 434) * (-28.7 - -28.7) + (434 + 434) * (-28.7 - -152.7) + (434 + 542.9) * (-152.7 - -152.7) + (542.9 + 542.9) * (-152.7 - 330.9) + (542.9 + 201.3) * (330.9 - 330.9) + (201.3 + 201.3) * (330.9 - -30.7) + (201.3 + 245.5) * (-30.7 - -30.7) + (245.5 + 245.5) * (-30.7 - -126.7) + (245.5 + 327.3) * (-126.7 - -126.7) + (327.3 + 327.3) * (-126.7 - -152.7) + (327.3 + 395.1) * (-152.7 - -152.7)\right) * 0.5 * 0.00694$
LOW CEILING	23	$-\left((434 + 434) * (-113.6 - -28.7) + (434 + 395.1) * (-28.7 - -28.7) + (395.1 + 395.1) * (-28.7 - -113.6)\right) * 0.5 * 0.00694$

# 140 Happiness Drive, Scottsboro, Jackson County, Alabama, United States, 35768

Gross Living Area: 1061 sq. ft

Space	Area (sq. ft)	Calculation <small>Coordinate Polygon Area Algorithm using inches</small>
(Non-living area)		$+ (395.1 + 434) * (-113.6 - -113.6)) * 0.5 * 0.00694$
LOW CEILING (Non-living area)	11	$-((434 + 434) * (-152.7 - -113.6) + (434 + 395.1) * (-113.6 - -113.6) + (395.1 + 395.1) * (-113.6 - -152.7) + (395.1 + 434) * (-152.7 - -152.7)) * 0.5 * 0.00694$
PORCH (Non-living area)	164	$-((489.9 + 489.9) * (330.9 - 417.8) + (489.9 + 400.2) * (417.8 - 417.8) + (400.2 + 400.2) * (417.8 - 466) + (400.2 + 338.2) * (466 - 466) + (338.2 + 338.2) * (466 - 417.8) + (338.2 + 252.7) * (417.8 - 417.8) + (252.7 + 252.7) * (417.8 - 330.9) + (252.7 + 489.9) * (330.9 - 330.9)) * 0.5 * 0.00694$