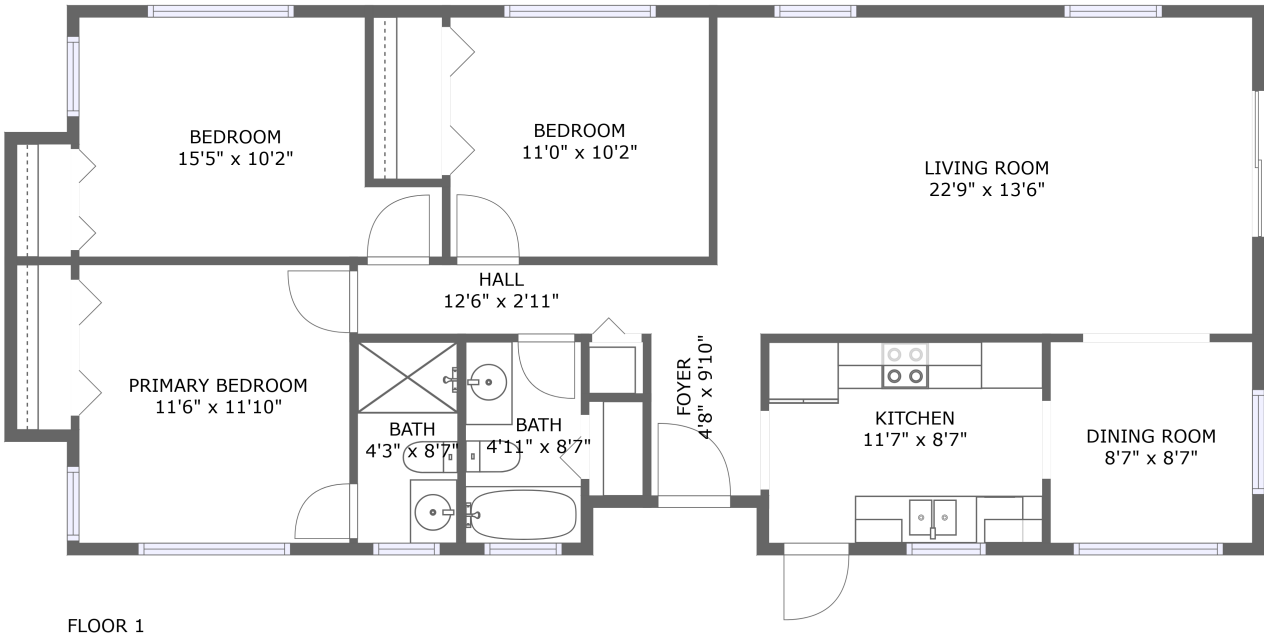


7301 North Branch Avenue, Old Seminole Heights,
Tampa, Hillsborough County, Florida, United States,



Property summary



0
Garages



3
Bedrooms



2
Bathrooms



0
Half baths



1
Floors

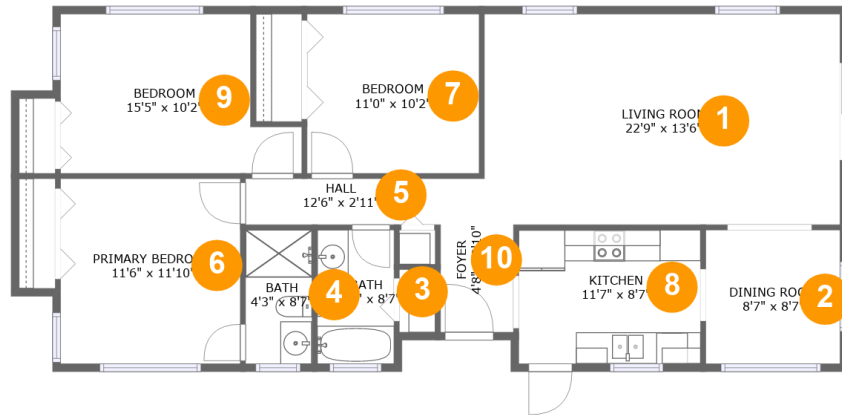


1,211
Gross living
area sqft



1,211
Total sqft

7301 North Branch Avenue, Old Seminole Heights, Tampa, Hillsborough County, Florida, United States,



Room dimensions

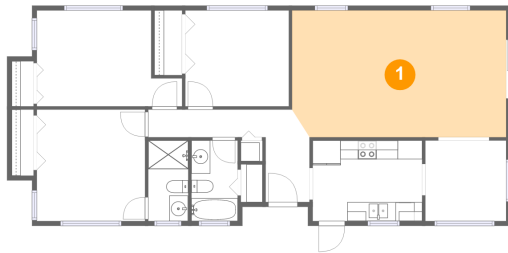
Floor 1

Total sqft: 1211 Living area: 1211

#		Dimensions	sqft	Counted as living area
1	Living Room	22'9" x 13'6"	304 sq. ft	Yes
2	Dining Room	8'7" x 8'7"	74 sq. ft	Yes
3	Bath	4'11" x 8'7"	42 sq. ft	Yes
4	Bath	4'3" x 8'7"	36 sq. ft	Yes
5	Hall	12'6" x 2'11"	37 sq. ft	Yes
6	Primary Bedroom	11'6" x 11'10"	136 sq. ft	Yes
7	Bedroom	11'0" x 10'2"	112 sq. ft	Yes
8	Kitchen	11'7" x 8'7"	100 sq. ft	Yes
9	Bedroom	15'5" x 10'2"	134 sq. ft	Yes
10	Foyer	4'8" x 9'10"	43 sq. ft	Yes

**7301 North Branch Avenue, Old Seminole Heights,
Tampa, Hillsborough County, Florida, United States,**

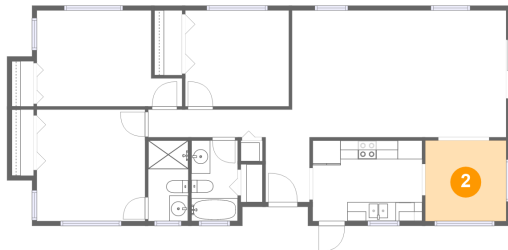
1 Floor 1 - Living Room



Dimensions: 22'9" x 13'6"
Area: 304 sq. ft
Counted as living area: Yes

Heated: Yes
Finished: Yes
Enclosed: Yes
Contiguous: Yes
Permitted: Yes
Wet space: No
Addition: No
Conversion: No

2 Floor 1 - Dining Room



Dimensions: 8'7" x 8'7"
Area: 74 sq. ft
Counted as living area: Yes

Heated: Yes
Finished: Yes
Enclosed: Yes
Contiguous: Yes
Permitted: Yes
Wet space: No
Addition: No
Conversion: No

**7301 North Branch Avenue, Old Seminole Heights,
Tampa, Hillsborough County, Florida, United States,**

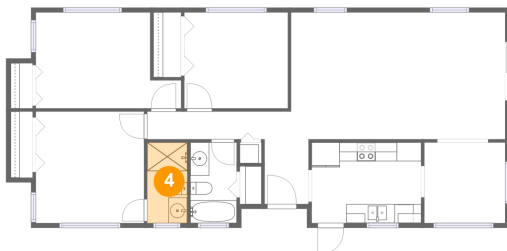
3 Floor 1 - Bath



Dimensions: 4'11" x 8'7"
Area: 42 sq. ft
Counted as living area: Yes

Heated: Yes
Finished: Yes
Enclosed: Yes
Contiguous: Yes
Permitted: Yes
Wet space: Yes
Addition: No
Conversion: No

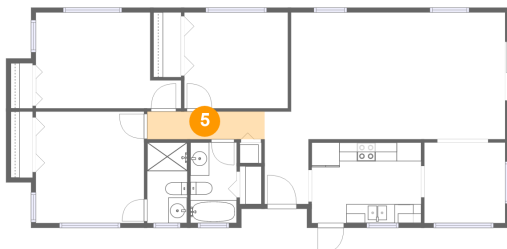
4 Floor 1 - Bath



Dimensions: 4'3" x 8'7"
Area: 36 sq. ft
Counted as living area: Yes

Heated: Yes
Finished: Yes
Enclosed: Yes
Contiguous: Yes
Permitted: Yes
Wet space: Yes
Addition: No
Conversion: No

5 Floor 1 - Hall

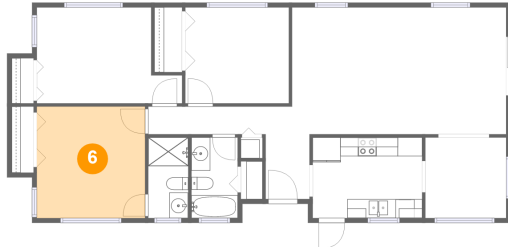


Dimensions: 12'6" x 2'11"
Area: 37 sq. ft
Counted as living area: Yes

Heated: Yes
Finished: Yes
Enclosed: Yes
Contiguous: Yes
Permitted: Yes
Wet space: No
Addition: No
Conversion: No

**7301 North Branch Avenue, Old Seminole Heights,
Tampa, Hillsborough County, Florida, United States,**

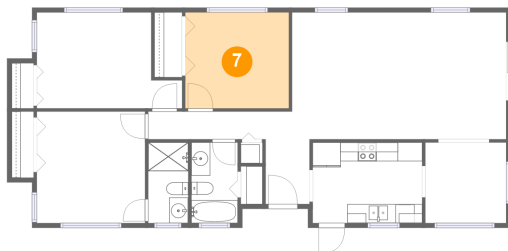
6 Floor 1 - Primary Bedroom



Dimensions: 11'6" x 11'10"
Area: 136 sq. ft
Counted as living area: Yes

Heated: Yes
Finished: Yes
Enclosed: Yes
Contiguous: Yes
Permitted: Yes
Wet space: No
Addition: No
Conversion: No

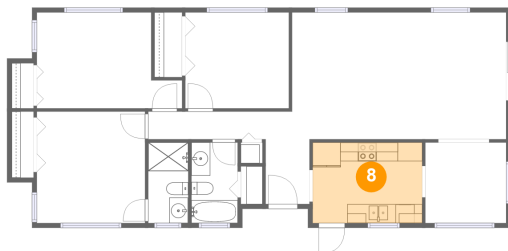
7 Floor 1 - Bedroom



Dimensions: 11'0" x 10'2"
Area: 112 sq. ft
Counted as living area: Yes

Heated: Yes
Finished: Yes
Enclosed: Yes
Contiguous: Yes
Permitted: Yes
Wet space: No
Addition: No
Conversion: No

8 Floor 1 - Kitchen

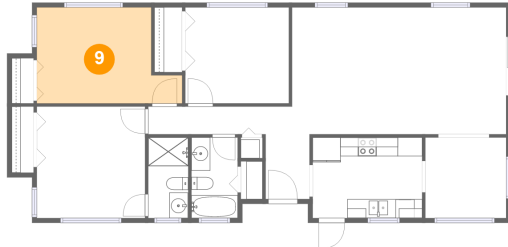


Dimensions: 11'7" x 8'7"
Area: 100 sq. ft
Counted as living area: Yes

Heated: Yes
Finished: Yes
Enclosed: Yes
Contiguous: Yes
Permitted: Yes
Wet space: No
Addition: No
Conversion: No

**7301 North Branch Avenue, Old Seminole Heights,
Tampa, Hillsborough County, Florida, United States,**

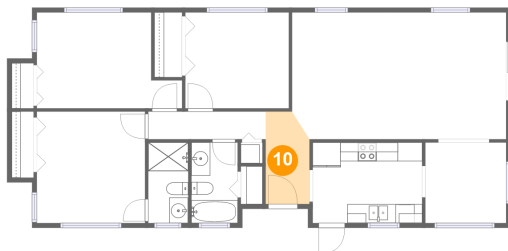
9 Floor 1 - Bedroom



Dimensions: 15'5" x 10'2"
Area: 134 sq. ft
Counted as living area: Yes

Heated: Yes
Finished: Yes
Enclosed: Yes
Contiguous: Yes
Permitted: Yes
Wet space: No
Addition: No
Conversion: No

10 Floor 1 - Foyer



Dimensions: 4'8" x 9'10"
Area: 43 sq. ft
Counted as living area: Yes

Heated: Yes
Finished: Yes
Enclosed: Yes
Contiguous: Yes
Permitted: Yes
Wet space: No
Addition: No
Conversion: No