



Home report


108 Lambeth Court, Lynchburg, Lynchburg city, Virginia, United States, 24503





Property summary


 **2** Garages


 **6** Bedrooms

 **4** Bathrooms

 **1** Half baths

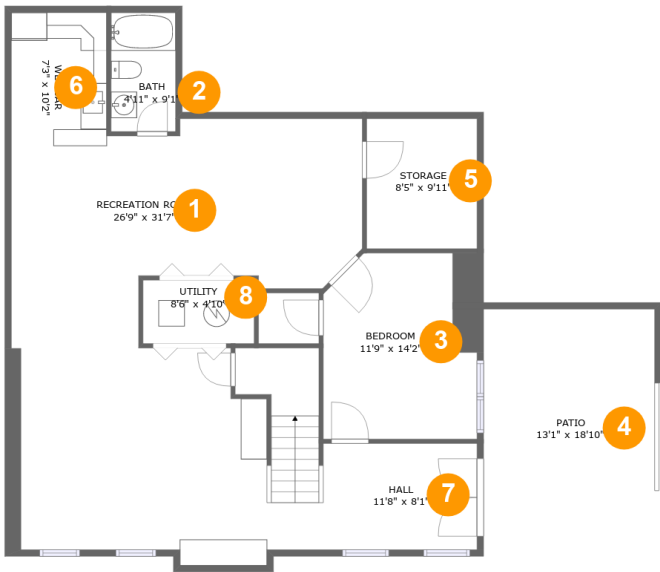
 **3** Floors

 **4,741** Gross living area sqft

 **7,124** Total sqft

Home report

108 Lambeth Court, Lynchburg, Lynchburg city, Virginia, United States, 24503



Room dimensions

Floor 1

Total sqft: 1610 Living area: 1270

#		Dimensions	sqft	Counted as living area
1	Recreation Room	26'9" x 31'7"	711 sq. ft	Yes
2	Bath	4'11" x 9'1"	45 sq. ft	Yes
3	Bedroom	11'9" x 14'2"	148 sq. ft	Yes
4	Patio	13'1" x 18'10"	246 sq. ft	No
5	Storage	8'5" x 9'11"	84 sq. ft	No
6	Wet Bar	7'3" x 10'2"	74 sq. ft	Yes
7	Hall	11'8" x 8'1"	95 sq. ft	Yes
8	Utility	8'6" x 4'10"	41 sq. ft	Yes

Home report

108 Lambeth Court, Lynchburg, Lynchburg city, Virginia, United States, 24503



Room dimensions

Floor 2

Total sqft: 3266

Living area: 1362

#		Dimensions	sqft	Counted as living area
9	Hall	12'10" x 6'11"	56 sq. ft	Yes
10	Garage	21'11" x 20'1"	440 sq. ft	No
11	Foyer	10'11" x 16'11"	175 sq. ft	Yes
12	Dining Area	12'10" x 11'11"	153 sq. ft	Yes
13	Family Room	22'8" x 17'2"	389 sq. ft	Yes
14	Living Room	11'8" x 15'5"	181 sq. ft	Yes
15	Patio	31'4" x 29'10"	811 sq. ft	No
16	WC	6'11" x 3'1"	22 sq. ft	Yes
17	Breakfast Nook	12'6" x 10'4"	123 sq. ft	Yes
18	Porch	10'11" x 4'3"	86 sq. ft	No
19	Garage	21'11" x 23'4"	511 sq. ft	No

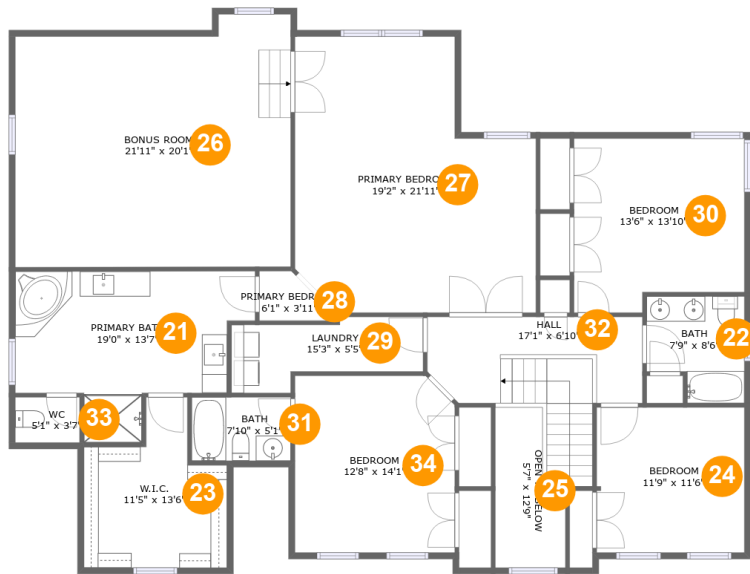
Home report

108 Lambeth Court, Lynchburg, Lynchburg city, Virginia, United States, 24503

#		Dimensions	sqft	Counted as living area
20	Kitchen	12'10" x 11'1"	137 sq. ft	Yes

Home report

108 Lambeth Court, Lynchburg, Lynchburg city, Virginia, United States, 24503



Room dimensions

Floor 3

Total sqft: 2248 Living area: 2109

#		Dimensions	sqft	Counted as living area
21	Primary Bath	19'0" x 13'7"	190 sq. ft	Yes
22	Bath	7'9" x 8'6"	58 sq. ft	Yes
23	W.I.C.	11'5" x 13'6"	118 sq. ft	Yes
24	Bedroom	11'9" x 11'6"	135 sq. ft	Yes
25	Open To Below	5'7" x 12'9"	57 sq. ft	No
26	Bonus Room	21'11" x 20'1"	341 sq. ft	Yes
27	Primary Bedroom	19'2" x 21'11"	362 sq. ft	Yes
28	Primary Bedroom	6'1" x 3'11"	18 sq. ft	Yes
29	Laundry	15'3" x 5'5"	69 sq. ft	Yes
30	Bedroom	13'6" x 13'10"	174 sq. ft	Yes
31	Bath	7'10" x 5'1"	40 sq. ft	Yes

Home report

108 Lambeth Court, Lynchburg, Lynchburg city, Virginia, United States, 24503

#		Dimensions	sqft	Counted as living area
32	Hall	17'1" x 6'10"	144 sq. ft	Yes
33	WC	5'1" x 3'7"	18 sq. ft	Yes
34	Bedroom	12'8" x 14'1"	176 sq. ft	Yes

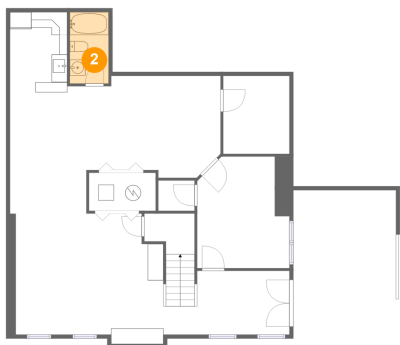
1 Floor 1 - Recreation Room



Dimensions: 26'9" x 31'7"
Area: 711 sq. ft
Counted as living area: Yes

Heated: Yes
Finished: Yes
Enclosed: Yes
Contiguous: Yes
Permitted: Yes
Wet space: No
Addition: No
Conversion: No

2 Floor 1 - Bath



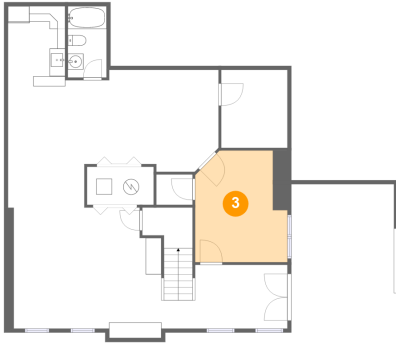
Dimensions: 4'11" x 9'1"
Area: 45 sq. ft
Counted as living area: Yes

Heated: Yes
Finished: Yes
Enclosed: Yes
Contiguous: Yes
Permitted: Yes
Wet space: Yes
Addition: No
Conversion: No

Home report

108 Lambeth Court, Lynchburg, Lynchburg city, Virginia, United States, 24503

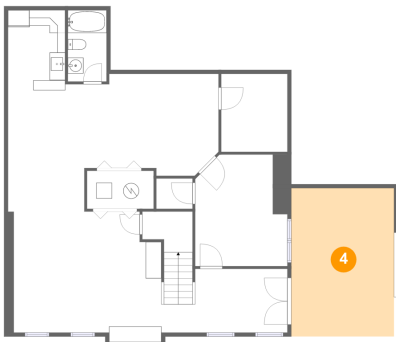
3 Floor 1 - Bedroom



Dimensions: 11'9" x 14'2"
Area: 148 sq. ft
Counted as living area: Yes

Heated: Yes
Finished: Yes
Enclosed: Yes
Contiguous: Yes
Permitted: Yes
Wet space: No
Addition: No
Conversion: No

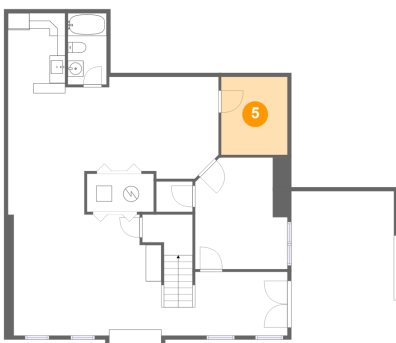
4 Floor 1 - Patio



Dimensions: 13'1" x 18'10"
Area: 246 sq. ft
Counted as living area: No

Heated: No
Finished: Yes
Enclosed: No
Contiguous: Yes
Permitted: Yes
Wet space: No
Addition: No
Conversion: No

5 Floor 1 - Storage



Dimensions: 8'5" x 9'11"
Area: 84 sq. ft
Counted as living area: No

Heated: No
Finished: No
Enclosed: No
Contiguous: Yes
Permitted: Yes
Wet space: No
Addition: No
Conversion: No

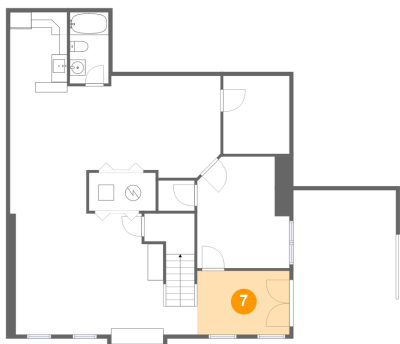
6 Floor 1 - Wet Bar



Dimensions: 7'3" x 10'2"
Area: 74 sq. ft
Counted as living area: Yes

Heated: Yes
Finished: Yes
Enclosed: Yes
Contiguous: Yes
Permitted: Yes
Wet space: No
Addition: No
Conversion: No

7 Floor 1 - Hall



Dimensions: 11'8" x 8'1"
Area: 95 sq. ft
Counted as living area: Yes

Heated: Yes
Finished: Yes
Enclosed: Yes
Contiguous: Yes
Permitted: Yes
Wet space: No
Addition: No
Conversion: No

8 Floor 1 - Utility



Dimensions: 8'6" x 4'10"
Area: 41 sq. ft
Counted as living area: Yes

Heated: Yes
Finished: Yes
Enclosed: Yes
Contiguous: Yes
Permitted: Yes
Wet space: No
Addition: No
Conversion: No

9 Floor 2 - Hall



Dimensions: 12'10" x 6'11"
Area: 56 sq. ft
Counted as living area: Yes

Heated: Yes
Finished: Yes
Enclosed: Yes
Contiguous: Yes
Permitted: Yes
Wet space: No
Addition: No
Conversion: No

10 Floor 2 - Garage



Dimensions: 21'11" x 20'1"
Area: 440 sq. ft
Counted as living area: No

Heated: No
Finished: No
Enclosed: Yes
Contiguous: Yes
Permitted: Yes
Wet space: No
Addition: No
Conversion: No

11 Floor 2 - Foyer



Dimensions: 10'11" x 16'11"
Area: 175 sq. ft
Counted as living area: Yes

Heated: Yes
Finished: Yes
Enclosed: Yes
Contiguous: Yes
Permitted: Yes
Wet space: No
Addition: No
Conversion: No

12 Floor 2 - Dining Area



Dimensions: 12'10" x 11'11"
Area: 153 sq. ft
Counted as living area: Yes

Heated: Yes
Finished: Yes
Enclosed: Yes
Contiguous: Yes
Permitted: Yes
Wet space: No
Addition: No
Conversion: No

13 Floor 2 - Family Room



Dimensions: 22'8" x 17'2"
Area: 389 sq. ft
Counted as living area: Yes

Heated: Yes
Finished: Yes
Enclosed: Yes
Contiguous: Yes
Permitted: Yes
Wet space: No
Addition: No
Conversion: No

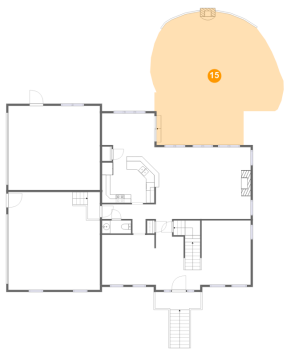
14 Floor 2 - Living Room



Dimensions: 11'8" x 15'5"
Area: 181 sq. ft
Counted as living area: Yes

Heated: Yes
Finished: Yes
Enclosed: Yes
Contiguous: Yes
Permitted: Yes
Wet space: No
Addition: No
Conversion: No

15 Floor 2 - Patio



Dimensions: 31'4" x 29'10"
Area: 811 sq. ft
Counted as living area: No

Heated: No
Finished: Yes
Enclosed: No
Contiguous: Yes
Permitted: Yes
Wet space: No
Addition: No
Conversion: No

16 Floor 2 - WC



Dimensions: 6'11" x 3'1"
Area: 22 sq. ft
Counted as living area: Yes

Heated: Yes
Finished: Yes
Enclosed: Yes
Contiguous: Yes
Permitted: Yes
Wet space: Yes
Addition: No
Conversion: No

17 Floor 2 - Breakfast Nook



Dimensions: 12'6" x 10'4"
Area: 123 sq. ft
Counted as living area: Yes

Heated: Yes
Finished: Yes
Enclosed: Yes
Contiguous: Yes
Permitted: Yes
Wet space: No
Addition: No
Conversion: No

108 Lambeth Court, Lynchburg, Lynchburg city, Virginia, United States, 24503

18 Floor 2 - Porch



Dimensions: 10'11" x 4'3"
Area: 86 sq. ft
Counted as living area: No

Heated: No
Finished: Yes
Enclosed: No
Contiguous: Yes
Permitted: Yes
Wet space: No
Addition: No
Conversion: No

19 Floor 2 - Garage



Dimensions: 21'11" x 23'4"
Area: 511 sq. ft
Counted as living area: No

Heated: No
Finished: No
Enclosed: Yes
Contiguous: Yes
Permitted: Yes
Wet space: No
Addition: No
Conversion: No

20 Floor 2 - Kitchen

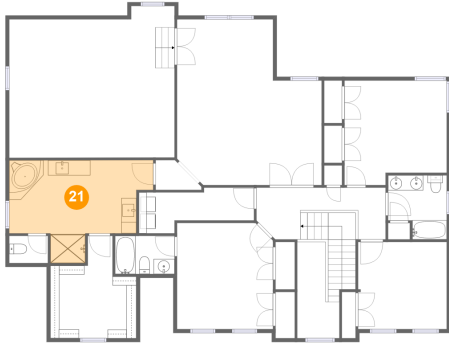


Dimensions: 12'10" x 11'1"
Area: 137 sq. ft
Counted as living area: Yes

Heated: Yes
Finished: Yes
Enclosed: Yes
Contiguous: Yes
Permitted: Yes
Wet space: No
Addition: No
Conversion: No

108 Lambeth Court, Lynchburg, Lynchburg city, Virginia, United States, 24503

21 Floor 3 - Primary Bath



Dimensions: 19'0" x 13'7"
Area: 190 sq. ft
Counted as living area: Yes

Heated: Yes
Finished: Yes
Enclosed: Yes
Contiguous: Yes
Permitted: Yes
Wet space: Yes
Addition: No
Conversion: No

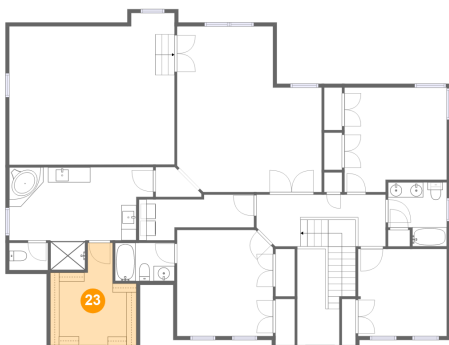
22 Floor 3 - Bath



Dimensions: 7'9" x 8'6"
Area: 58 sq. ft
Counted as living area: Yes

Heated: Yes
Finished: Yes
Enclosed: Yes
Contiguous: Yes
Permitted: Yes
Wet space: Yes
Addition: No
Conversion: No

23 Floor 3 - W.I.C.



Dimensions: 11'5" x 13'6"
Area: 118 sq. ft
Counted as living area: Yes

Heated: Yes
Finished: Yes
Enclosed: Yes
Contiguous: Yes
Permitted: Yes
Wet space: No
Addition: No
Conversion: No

108 Lambeth Court, Lynchburg, Lynchburg city, Virginia, United States, 24503

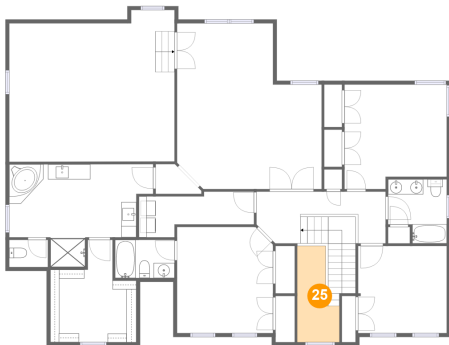
24 Floor 3 - Bedroom



Dimensions: 11'9" x 11'6"
Area: 135 sq. ft
Counted as living area: Yes

Heated: Yes
Finished: Yes
Enclosed: Yes
Contiguous: Yes
Permitted: Yes
Wet space: No
Addition: No
Conversion: No

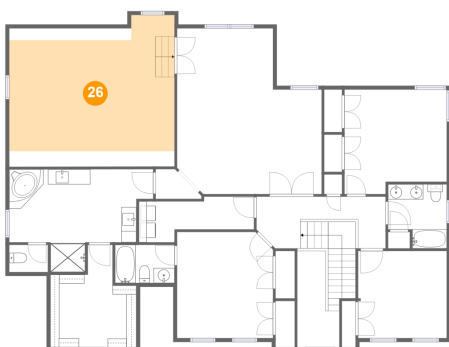
25 Floor 3 - Open To Below



Dimensions: 5'7" x 12'9"
Area: 57 sq. ft
Counted as living area: No

Heated: No
Finished: No
Enclosed: No
Contiguous: Yes
Permitted: No
Wet space: No
Addition: No
Conversion: No

26 Floor 3 - Bonus Room

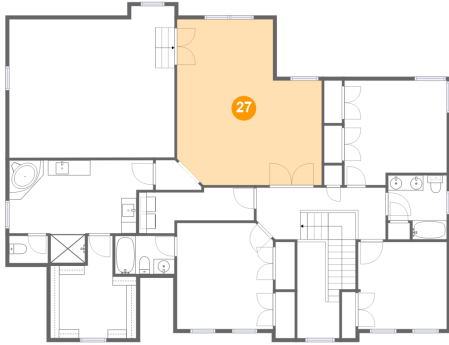


Dimensions: 21'11" x 20'1"
Area: 341 sq. ft
Counted as living area: Yes

Heated: Yes
Finished: Yes
Enclosed: Yes
Contiguous: Yes
Permitted: Yes
Wet space: No
Addition: No
Conversion: No

108 Lambeth Court, Lynchburg, Lynchburg city, Virginia, United States, 24503

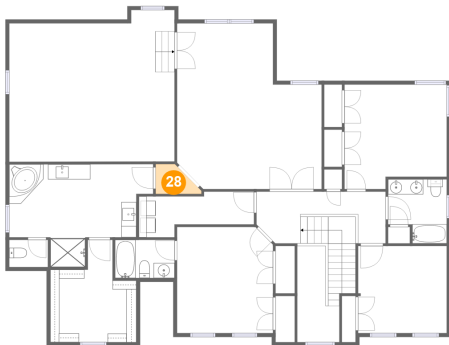
27 Floor 3 - Primary Bedroom



Dimensions: 19'2" x 21'11"
Area: 362 sq. ft
Counted as living area: Yes

Heated: Yes
Finished: Yes
Enclosed: Yes
Contiguous: Yes
Permitted: Yes
Wet space: No
Addition: No
Conversion: No

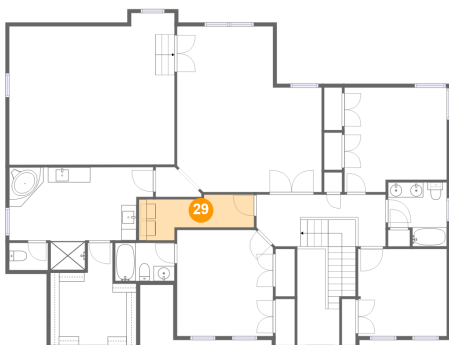
28 Floor 3 - Primary Bedroom



Dimensions: 6'1" x 3'11"
Area: 18 sq. ft
Counted as living area: Yes

Heated: Yes
Finished: Yes
Enclosed: Yes
Contiguous: Yes
Permitted: Yes
Wet space: No
Addition: No
Conversion: No

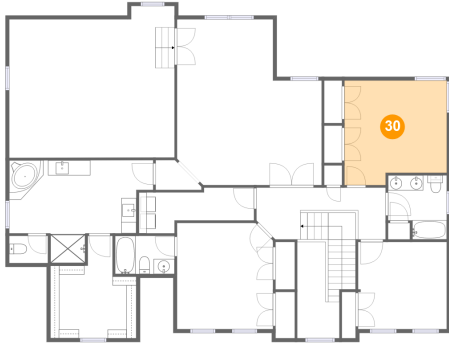
29 Floor 3 - Laundry



Dimensions: 15'3" x 5'5"
Area: 69 sq. ft
Counted as living area: Yes

Heated: Yes
Finished: Yes
Enclosed: Yes
Contiguous: Yes
Permitted: Yes
Wet space: No
Addition: No
Conversion: No

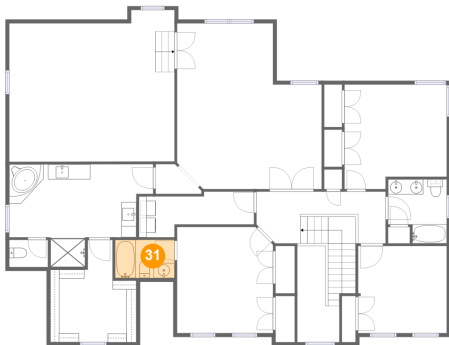
30 Floor 3 - Bedroom



Dimensions: 13'6" x 13'10"
Area: 174 sq. ft
Counted as living area: Yes

Heated: Yes
Finished: Yes
Enclosed: Yes
Contiguous: Yes
Permitted: Yes
Wet space: No
Addition: No
Conversion: No

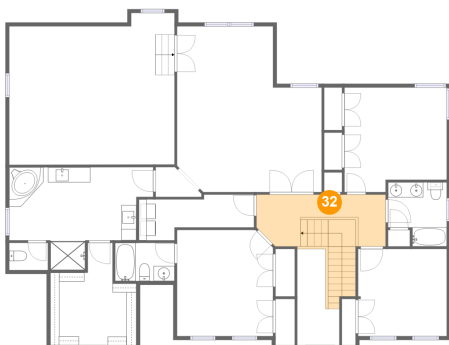
31 Floor 3 - Bath



Dimensions: 7'10" x 5'1"
Area: 40 sq. ft
Counted as living area: Yes

Heated: Yes
Finished: Yes
Enclosed: Yes
Contiguous: Yes
Permitted: Yes
Wet space: Yes
Addition: No
Conversion: No

32 Floor 3 - Hall

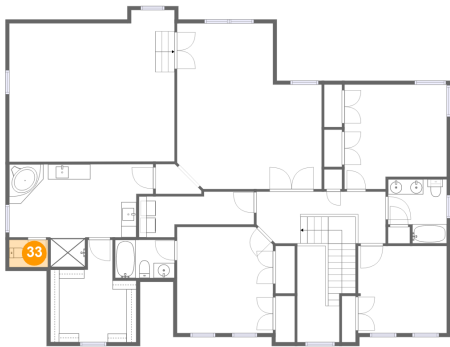


Dimensions: 17'1" x 6'10"
Area: 144 sq. ft
Counted as living area: Yes

Heated: Yes
Finished: Yes
Enclosed: Yes
Contiguous: Yes
Permitted: Yes
Wet space: No
Addition: No
Conversion: No

108 Lambeth Court, Lynchburg, Lynchburg city, Virginia, United States, 24503

33 Floor 3 - WC



Dimensions: 5'1" x 3'7"
Area: 18 sq. ft
Counted as living area: Yes

Heated: Yes
Finished: Yes
Enclosed: Yes
Contiguous: Yes
Permitted: Yes
Wet space: Yes
Addition: No
Conversion: No

34 Floor 3 - Bedroom



Dimensions: 12'8" x 14'1"
Area: 176 sq. ft
Counted as living area: Yes

Heated: Yes
Finished: Yes
Enclosed: Yes
Contiguous: Yes
Permitted: Yes
Wet space: No
Addition: No
Conversion: No