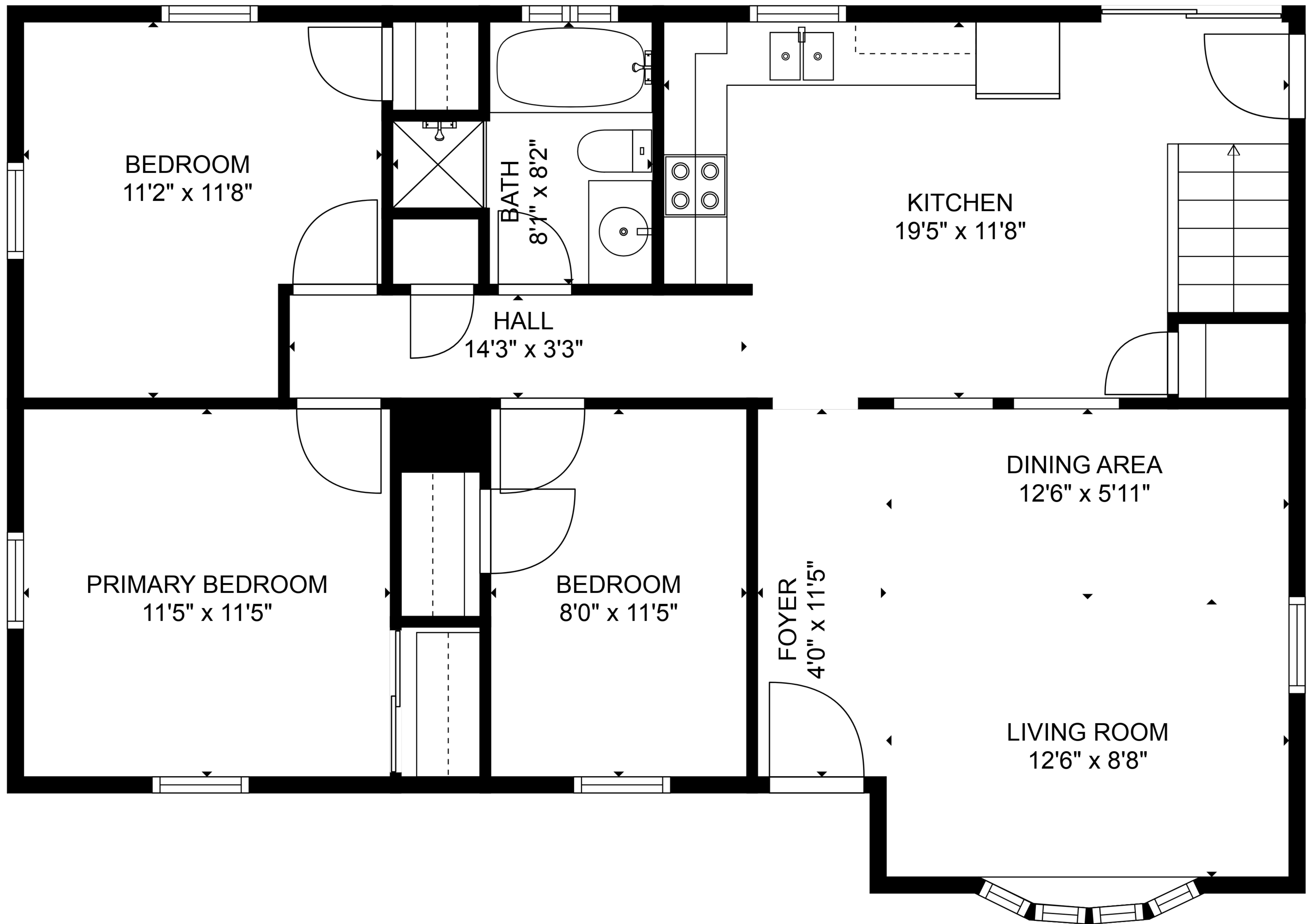


BASEMENT
39'4" x 26'7"

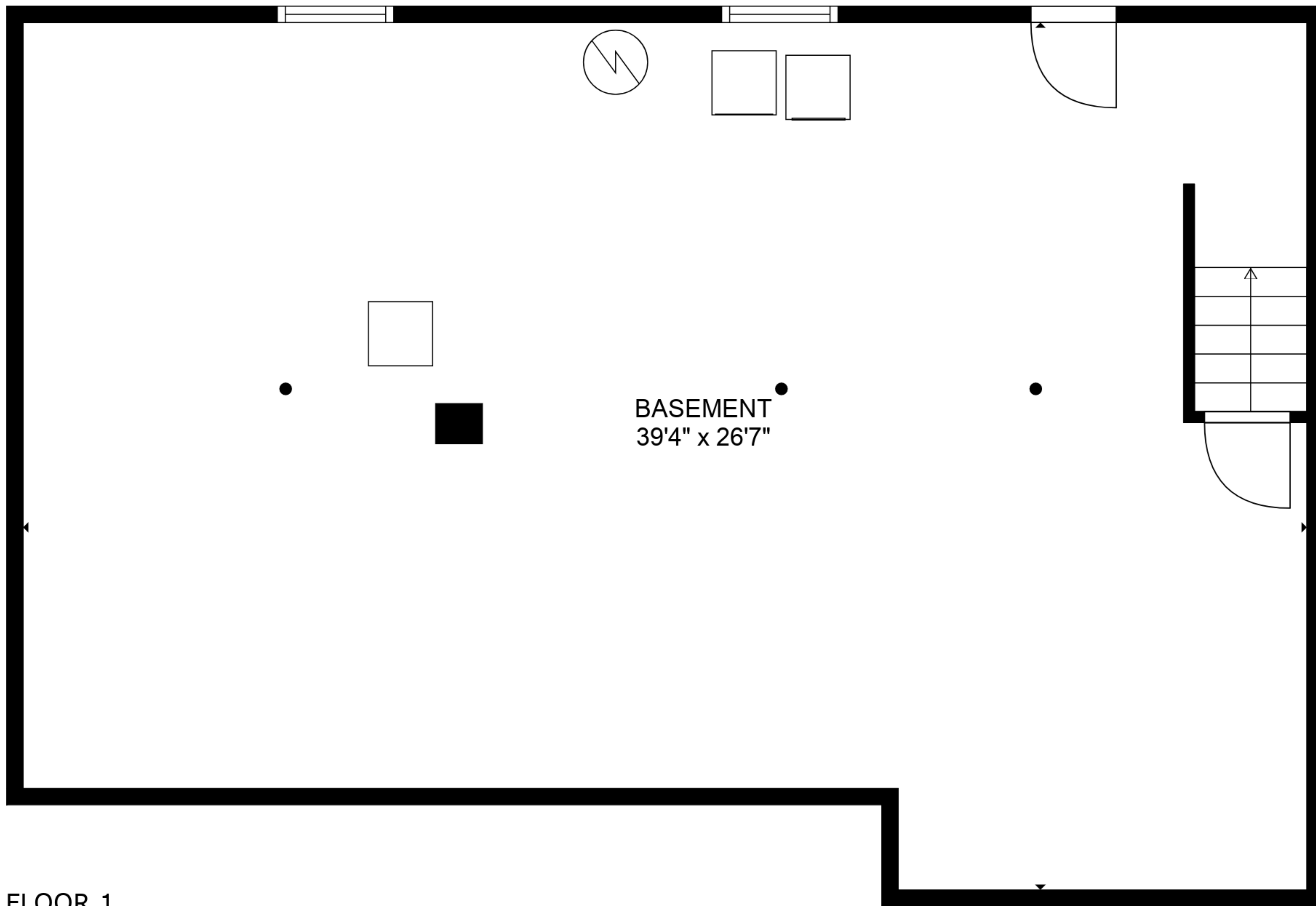


TOTAL: 970 sq. ft

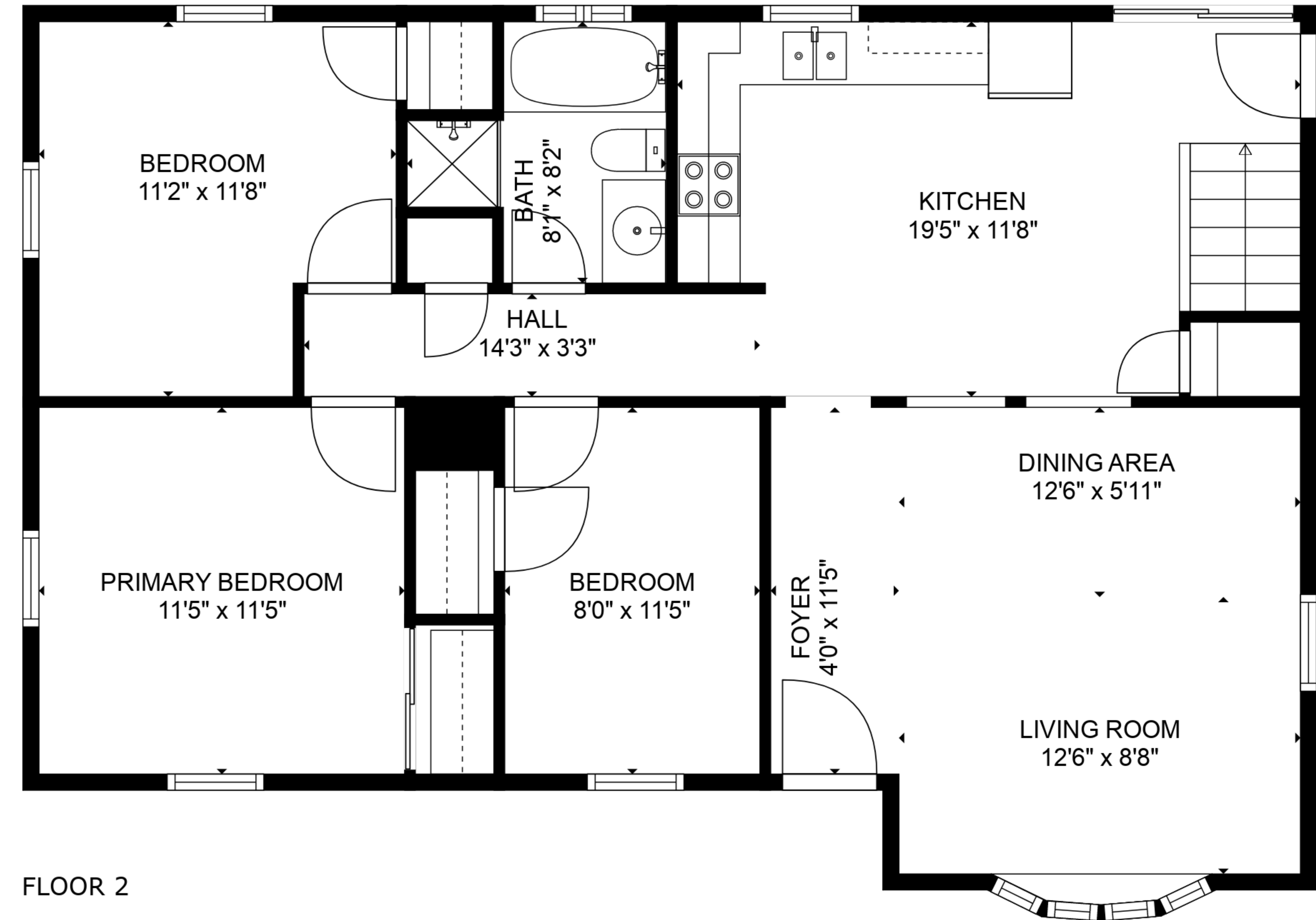
BELOW GROUND: 0 sq. ft, FLOOR 2: 970 sq. ft
 EXCLUDED AREAS: BASEMENT: 964 sq. ft



Floor Plans are provided by HouseSnappers.com. Measurements are deemed highly reliable but not guaranteed.



FLOOR 1



FLOOR 2

TOTAL: 970 sq. ft

BELOW GROUND: 0 sq. ft, FLOOR 2: 970 sq. ft

EXCLUDED AREAS: BASEMENT: 964 sq. ft

