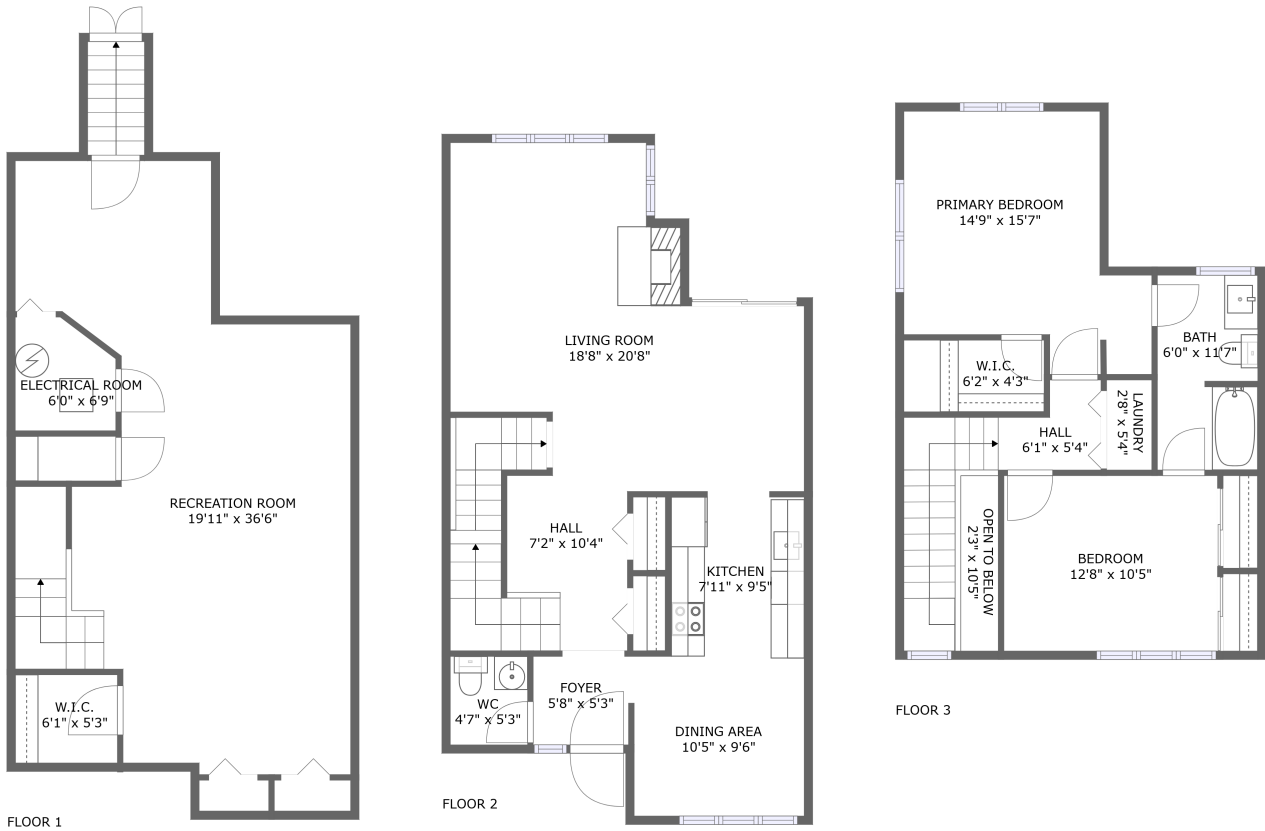


54 Laurel Court, Nashua, Hillsborough County, New Hampshire, United States, 03062

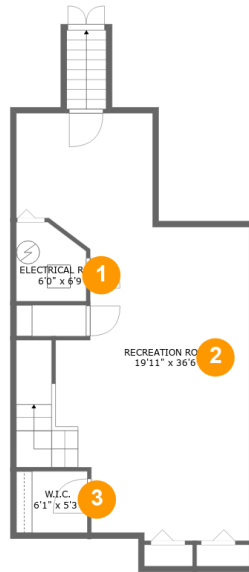


Property Summary

0 garages **2** bedrooms **1** bathrooms **1** half baths

3 floors **2,042** Gross Living Area sqft **2,123** total sqft

54 Laurel Court, Nashua, Hillsborough County, New Hampshire, United States, 03062



Room Dimensions

Floor 1

Total sqft: 733

Living area: 676

#	Room name	Dimensions	Area (sqft)	Counted as Living Area
1	Electrical Room	6'0" x 6'9"	36 sq. ft	No
2	Recreation Room	19'11" x 36'6"	541 sq. ft	Yes
3	W.i.c.	6'1" x 5'3"	32 sq. ft	Yes

54 Laurel Court, Nashua, Hillsborough County, New Hampshire, United States, 03062



Room Dimensions

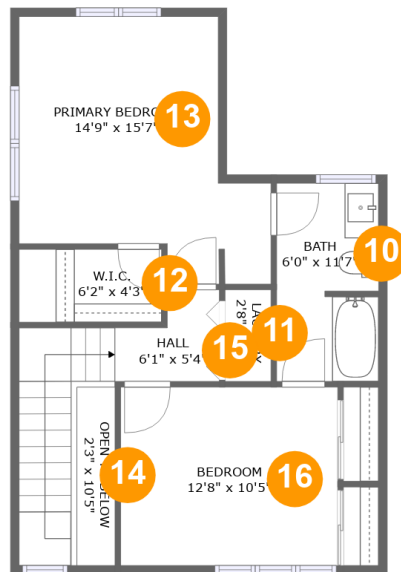
Floor 2

Total sqft: 759

Living area: 759

#	Room name	Dimensions	Area (sqft)	Counted as Living Area
4	Wc	4'7" x 5'3"	24 sq. ft	Yes
5	Dining Area	10'5" x 9'6"	97 sq. ft	Yes
6	Living Room	18'8" x 20'8"	323 sq. ft	Yes
7	Kitchen	7'11" x 9'5"	75 sq. ft	Yes
8	Foyer	5'8" x 5'3"	30 sq. ft	Yes
9	Hall	7'2" x 10'4"	126 sq. ft	Yes

54 Laurel Court, Nashua, Hillsborough County, New Hampshire, United States, 03062



Room Dimensions

Floor 3

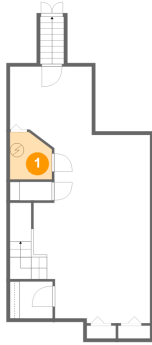
Total sqft: 631

Living area: 607

#	Room name	Dimensions	Area (sqft)	Counted as Living Area
10	Bath	6'0" x 11'7"	68 sq. ft	Yes
11	Laundry	2'8" x 5'4"	14 sq. ft	Yes
12	W.i.c.	6'2" x 4'3"	35 sq. ft	Yes
13	Primary Bedroom	14'9" x 15'7"	179 sq. ft	Yes
14	Open To Below	2'3" x 10'5"	23 sq. ft	No
15	Hall	6'1" x 5'4"	81 sq. ft	No
16	Bedroom	12'8" x 10'5"	132 sq. ft	Yes

54 Laurel Court, Nashua, Hillsborough County, New Hampshire, United States, 03062

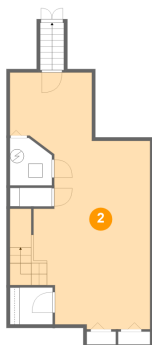
1 Floor 1 - Electrical Room



Dimensions: 6'0" x 6'9"
Area: 36 sq. ft
Counted as Living Area: No

Heated: No
Finished: No
Enclosed: Yes
Contiguous: Yes
Permitted: Yes
Wet Space: No
Addition: No
Conversion: No

2 Floor 1 - Recreation Room

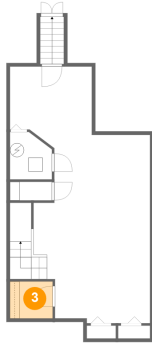


Dimensions: 19'11" x 36'6"
Area: 541 sq. ft
Counted as Living Area:
Yes

Heated: Yes
Finished: Yes
Enclosed: Yes
Contiguous:
Yes
Permitted: Yes
Wet Space: No
Addition: No
Conversion: No

54 Laurel Court, Nashua, Hillsborough County, New Hampshire, United States, 03062

3 Floor 1 - W.i.c.



Dimensions: 6'1" x 5'3"
Area: 32 sq. ft
Counted as Living Area:
Yes

Heated: Yes
Finished: Yes
Enclosed: Yes
Contiguous:
Yes
Permitted: Yes
Wet Space: No
Addition: No
Conversion: No

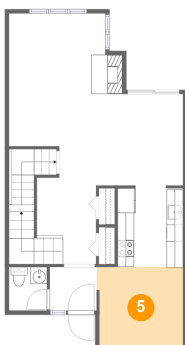
4 Floor 2 - Wc



Dimensions: 4'7" x 5'3"
Area: 24 sq. ft
Counted as Living Area:
Yes

Heated: Yes
Finished: Yes
Enclosed: Yes
Contiguous:
Yes
Permitted: Yes
Wet Space: Yes
Addition: No
Conversion: No

5 Floor 2 - Dining Area



Dimensions: 10'5" x 9'6"
Area: 97 sq. ft
Counted as Living Area:
Yes

Heated: Yes
Finished: Yes
Enclosed: Yes
Contiguous:
Yes
Permitted: Yes
Wet Space: No
Addition: No
Conversion: No

54 Laurel Court, Nashua, Hillsborough County, New Hampshire, United States, 03062

6 Floor 2 - Living Room



Dimensions: 18'8" x 20'8"
Area: 323 sq. ft
Counted as Living Area:
Yes

Heated: Yes
Finished: Yes
Enclosed: Yes
Contiguous:
Yes
Permitted: Yes
Wet Space: No
Addition: No
Conversion: No

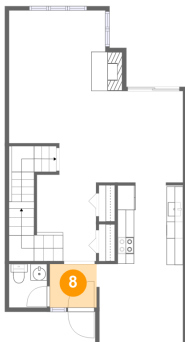
7 Floor 2 - Kitchen



Dimensions: 7'11" x 9'5"
Area: 75 sq. ft
Counted as Living Area:
Yes

Heated: Yes
Finished: Yes
Enclosed: Yes
Contiguous:
Yes
Permitted: Yes
Wet Space: No
Addition: No
Conversion: No

8 Floor 2 - Foyer



Dimensions: 5'8" x 5'3"
Area: 30 sq. ft
Counted as Living Area:
Yes

Heated: Yes
Finished: Yes
Enclosed: Yes
Contiguous:
Yes
Permitted: Yes
Wet Space: No
Addition: No
Conversion: No

54 Laurel Court, Nashua, Hillsborough County, New Hampshire, United States, 03062

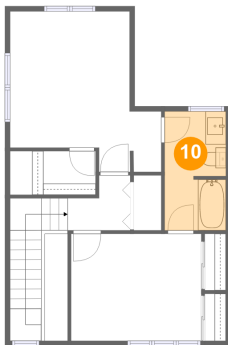
9 Floor 2 - Hall



Dimensions: 7'2" x 10'4"
Area: 126 sq. ft
Counted as Living Area:
Yes

Heated: Yes
Finished: Yes
Enclosed: Yes
Contiguous:
Yes
Permitted: Yes
Wet Space: No
Addition: No
Conversion: No

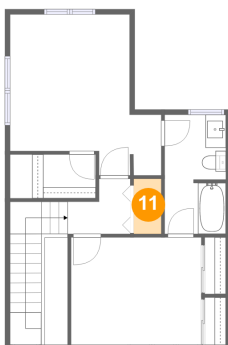
10 Floor 3 - Bath



Dimensions: 6'0" x 11'7"
Area: 68 sq. ft
Counted as Living Area:
Yes

Heated: Yes
Finished: Yes
Enclosed: Yes
Contiguous:
Yes
Permitted: Yes
Wet Space: Yes
Addition: No
Conversion: No

11 Floor 3 - Laundry

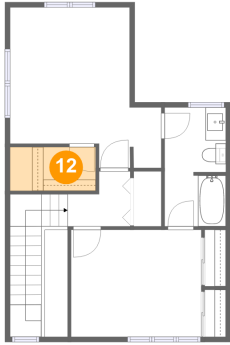


Dimensions: 2'8" x 5'4"
Area: 14 sq. ft
Counted as Living Area:
Yes

Heated: Yes
Finished: Yes
Enclosed: Yes
Contiguous:
Yes
Permitted: Yes
Wet Space: No
Addition: No
Conversion: No

54 Laurel Court, Nashua, Hillsborough County, New Hampshire, United States, 03062

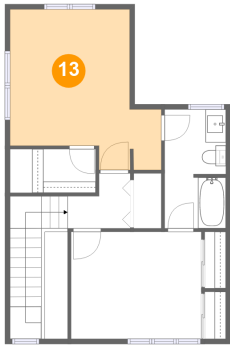
12 Floor 3 - W.i.c.



Dimensions: 6'2" x 4'3"
Area: 35 sq. ft
Counted as Living Area:
Yes

Heated: Yes
Finished: Yes
Enclosed: Yes
Contiguous:
Yes
Permitted: Yes
Wet Space: No
Addition: No
Conversion: No

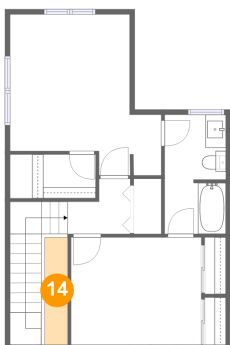
13 Floor 3 - Primary Bedroom



Dimensions: 14'9" x 15'7"
Area: 179 sq. ft
Counted as Living Area:
Yes

Heated: Yes
Finished: Yes
Enclosed: Yes
Contiguous:
Yes
Permitted: Yes
Wet Space: No
Addition: No
Conversion: No

14 Floor 3 - Open To Below

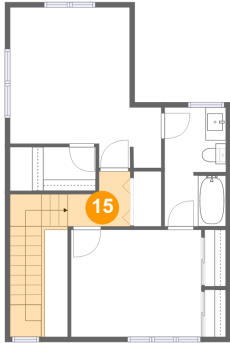


Dimensions: 2'3" x 10'5"
Area: 23 sq. ft
Counted as Living Area: No

Heated: No
Finished: No
Enclosed: No
Contiguous: Yes
Permitted: No
Wet Space: No
Addition: No
Conversion: No

54 Laurel Court, Nashua, Hillsborough County, New Hampshire, United States, 03062

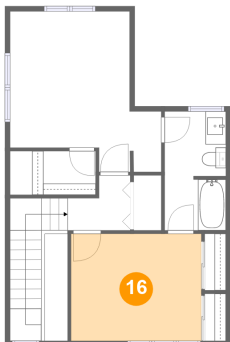
15 Floor 3 - Hall



Dimensions: 6'1" x 5'4"
Area: 81 sq. ft
Counted as Living Area: No

Heated: Yes
Finished: Yes
Enclosed: Yes
Contiguous: Yes
Permitted: Yes
Wet Space: No
Addition: No
Conversion: No

16 Floor 3 - Bedroom



Dimensions: 12'8" x 10'5"
Area: 132 sq. ft
Counted as Living Area:
Yes

Heated: Yes
Finished: Yes
Enclosed: Yes
Contiguous:
Yes
Permitted: Yes
Wet Space: No
Addition: No
Conversion: No