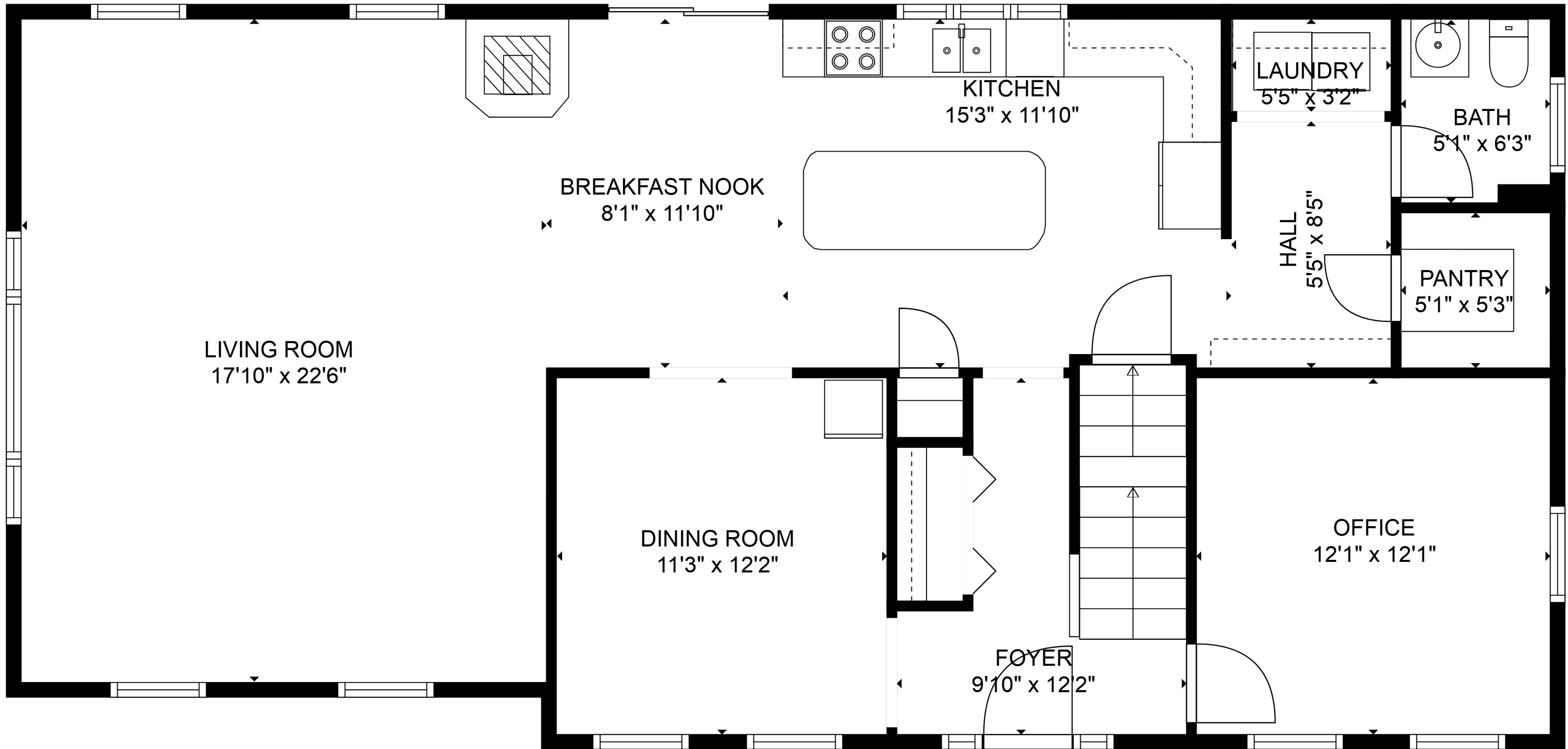


TOTAL: 2380 sq. ft

BELOW GROUND: 321 sq. ft, FLOOR 2: 1235 sq. ft, FLOOR 3: 824 sq. ft, FLOOR 4: 0 sq. ft
EXCLUDED AREAS: GARAGE: 551 sq. ft, BASEMENT: 351 sq. ft, LOW CEILING: 155 sq. ft,
ATTIC: 381 sq. ft

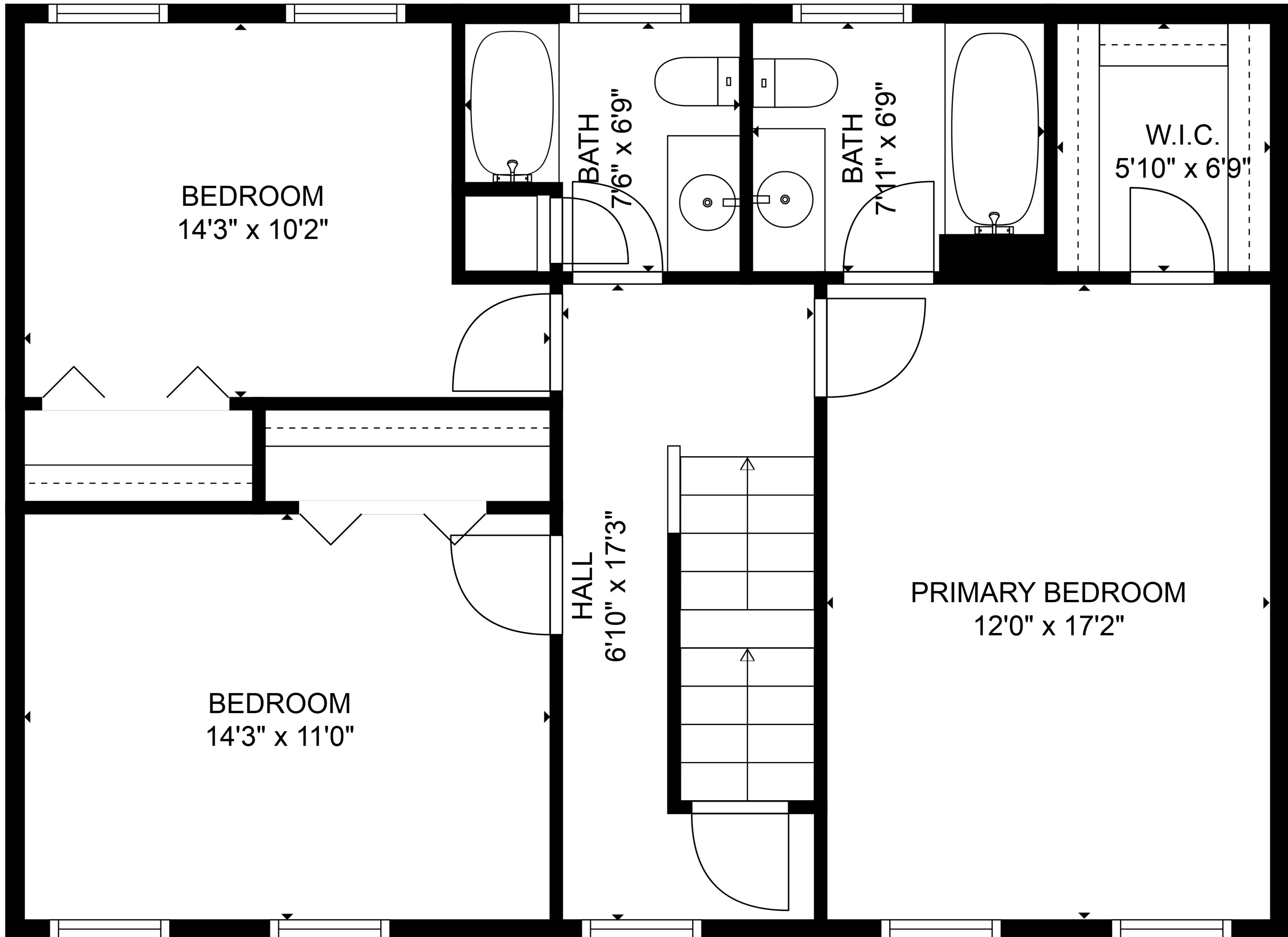
FLOOR PLAN CREATED BY CUBICASA APP. MEASUREMENTS DEEMED HIGHLY RELIABLE BUT NOT GUARANTEED.



TOTAL: 2380 sq. ft

BELOW GROUND: 321 sq. ft, FLOOR 2: 1235 sq. ft, FLOOR 3: 824 sq. ft, FLOOR 4: 0 sq. ft
 EXCLUDED AREAS: GARAGE: 551 sq. ft, BASEMENT: 351 sq. ft, LOW CEILING: 155 sq. ft,
 ATTIC: 381 sq. ft

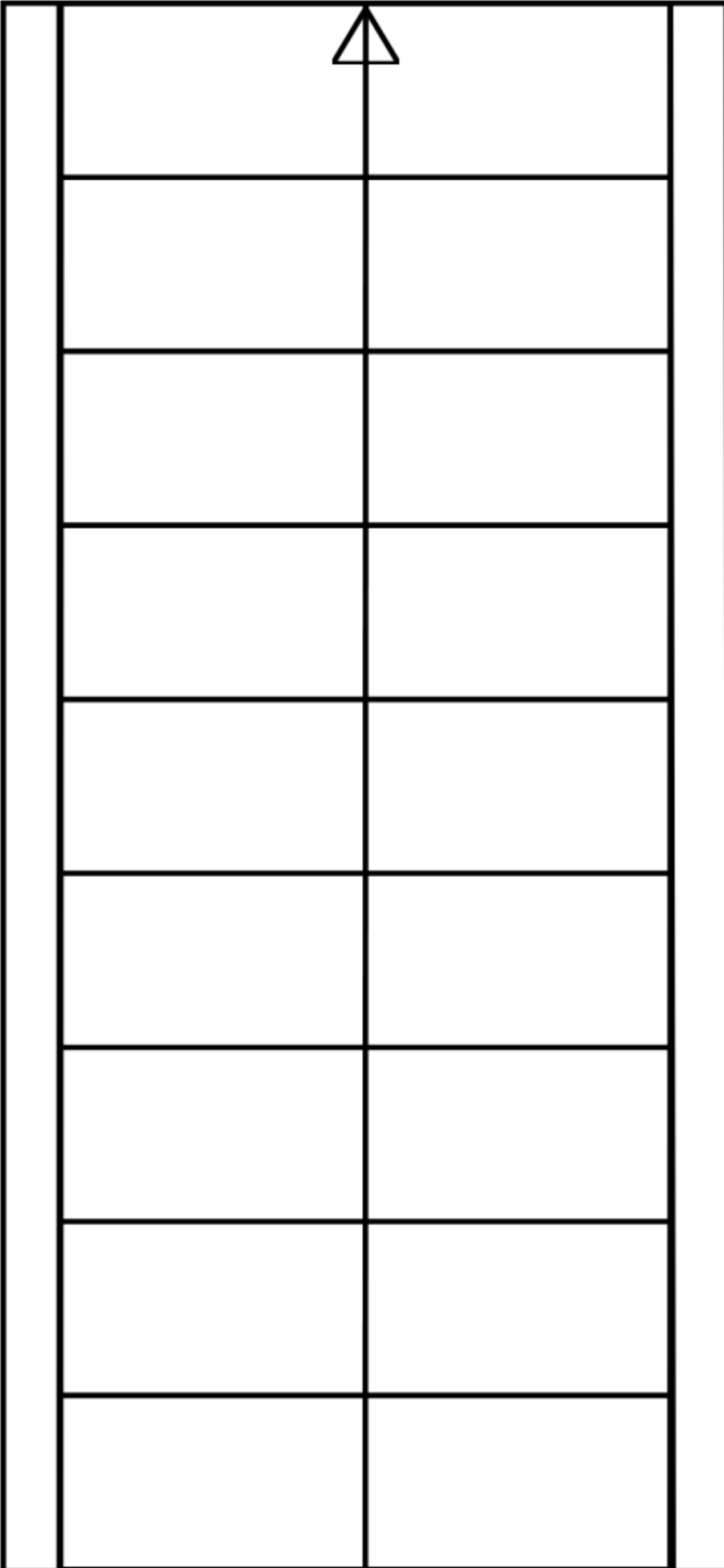
FLOOR PLAN CREATED BY CUBICASA APP. MEASUREMENTS DEEMED HIGHLY RELIABLE BUT NOT GUARANTEED.



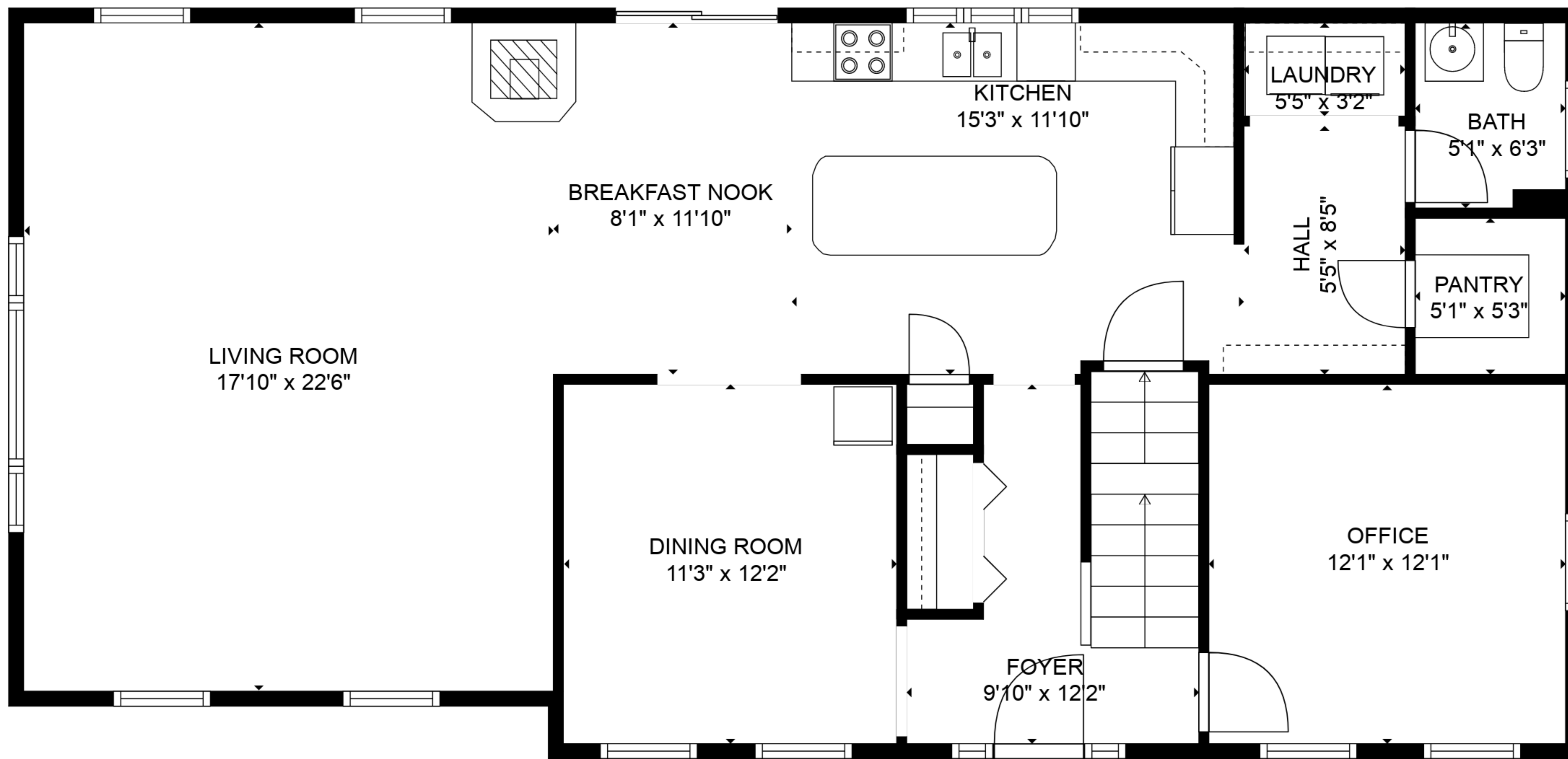
TOTAL: 2380 sq. ft

BELOW GROUND: 321 sq. ft, FLOOR 2: 1235 sq. ft, FLOOR 3: 824 sq. ft, FLOOR 4: 0 sq. ft
 EXCLUDED AREAS: GARAGE: 551 sq. ft, BASEMENT: 351 sq. ft, LOW CEILING: 155 sq. ft,
 ATTIC: 381 sq. ft

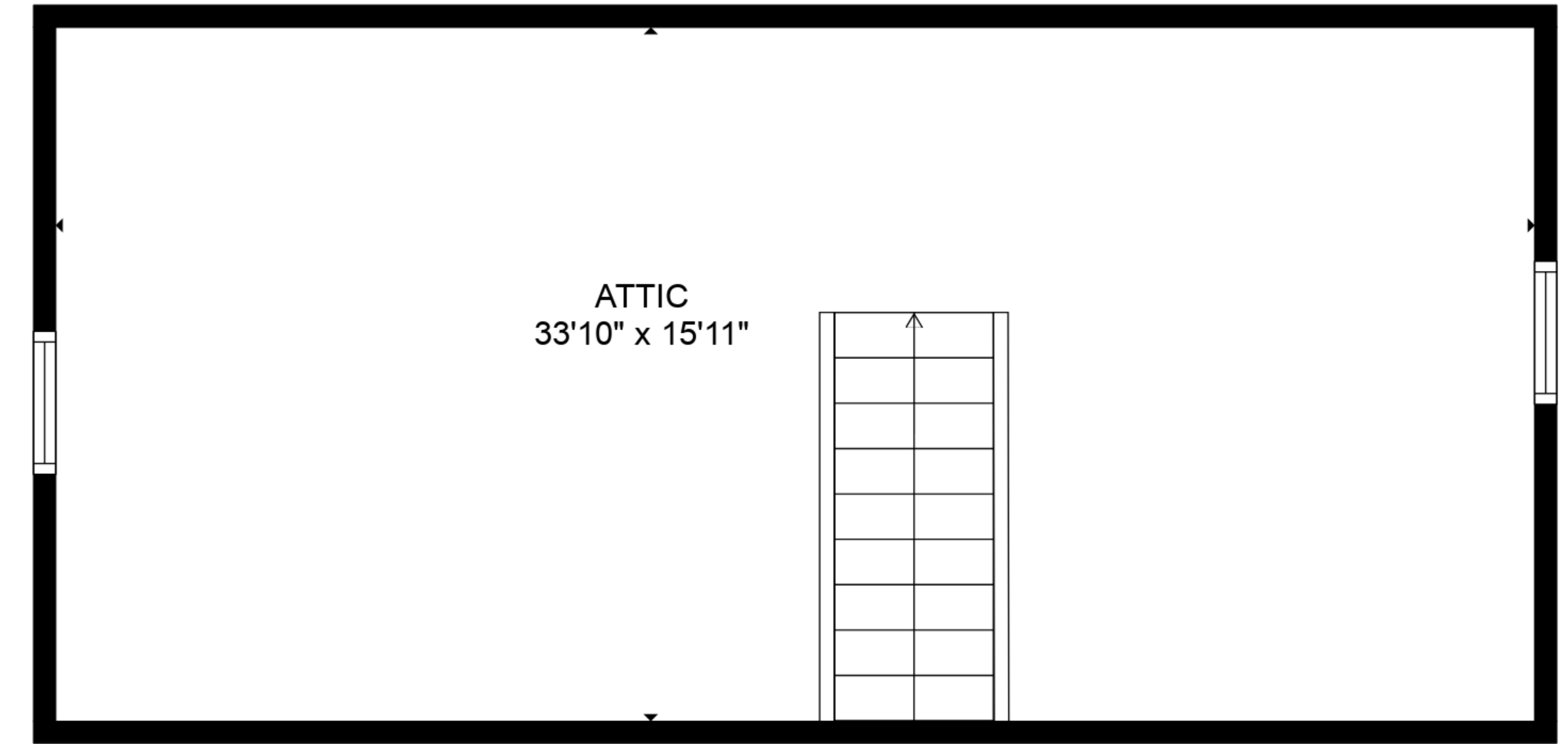
ATTIC
33'10" x 15'11"



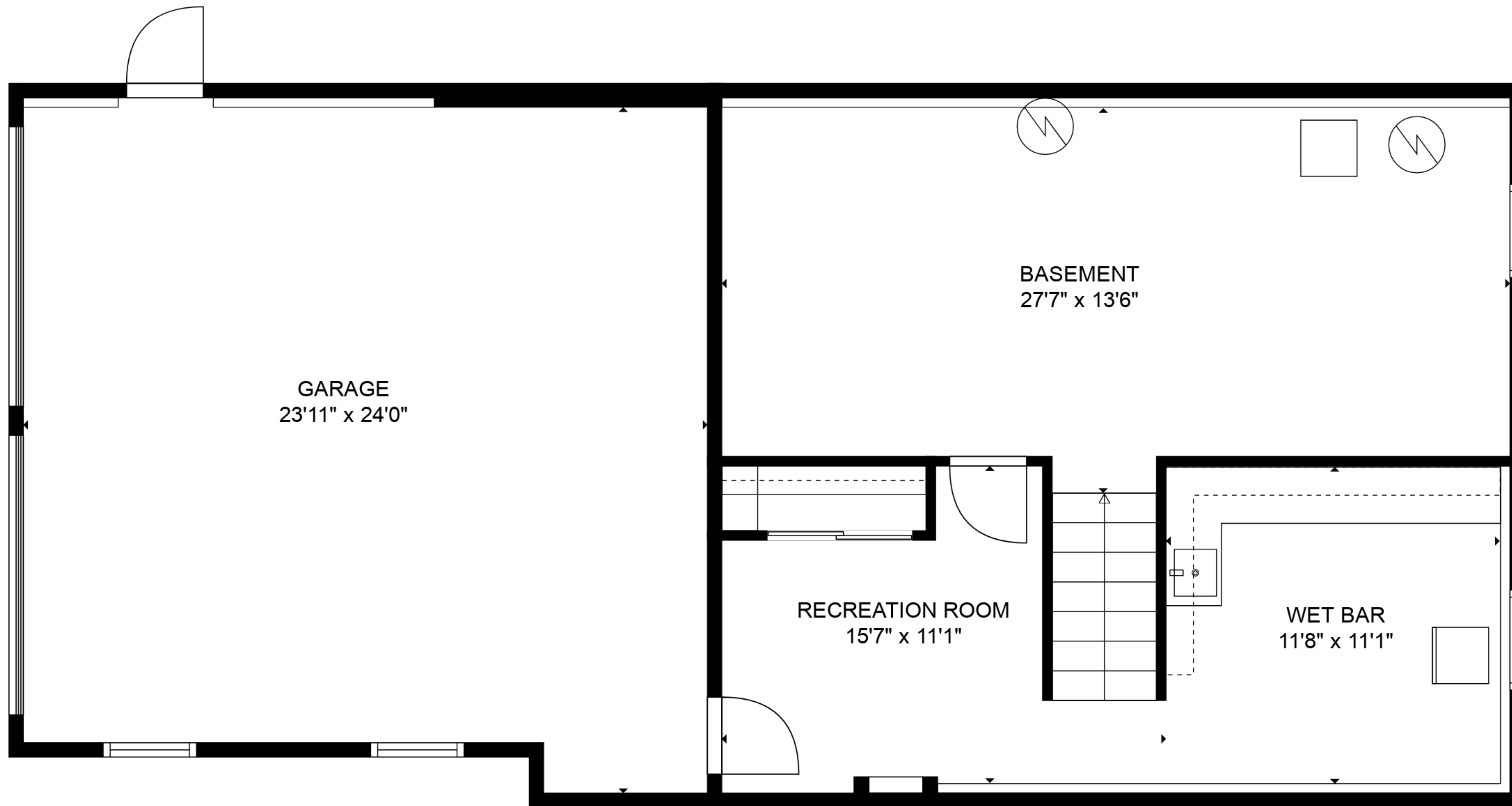
TOTAL: 2380 sq. ft
BELOW GROUND: 321 sq. ft, FLOOR 2: 1235 sq. ft, FLOOR 3: 824 sq. ft, FLOOR 4: 0 sq. ft
EXCLUDED AREAS: GARAGE: 551 sq. ft, BASEMENT: 351 sq. ft, LOW CEILING: 155 sq. ft,
ATTIC: 381 sq. ft



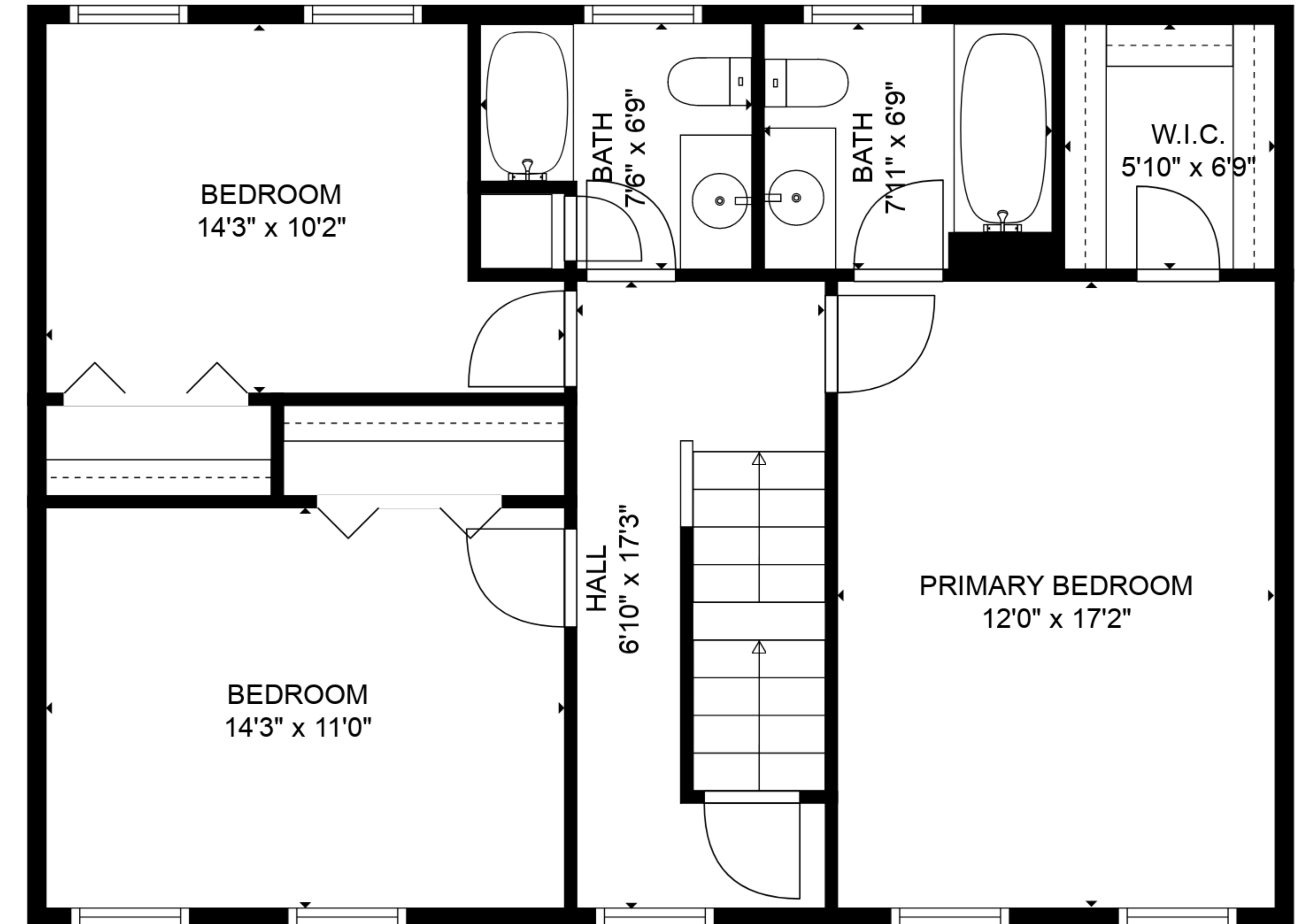
FLOOR 2



FLOOR 4



FLOOR 1



FLOOR 3

TOTAL: 2380 sq. ft

BELOW GROUND: 321 sq. ft, FLOOR 2: 1235 sq. ft, FLOOR 3: 824 sq. ft, FLOOR 4: 0 sq. ft
 EXCLUDED AREAS: GARAGE: 551 sq. ft, BASEMENT: 351 sq. ft, LOW CEILING: 155 sq. ft,
 ATTIC: 381 sq. ft