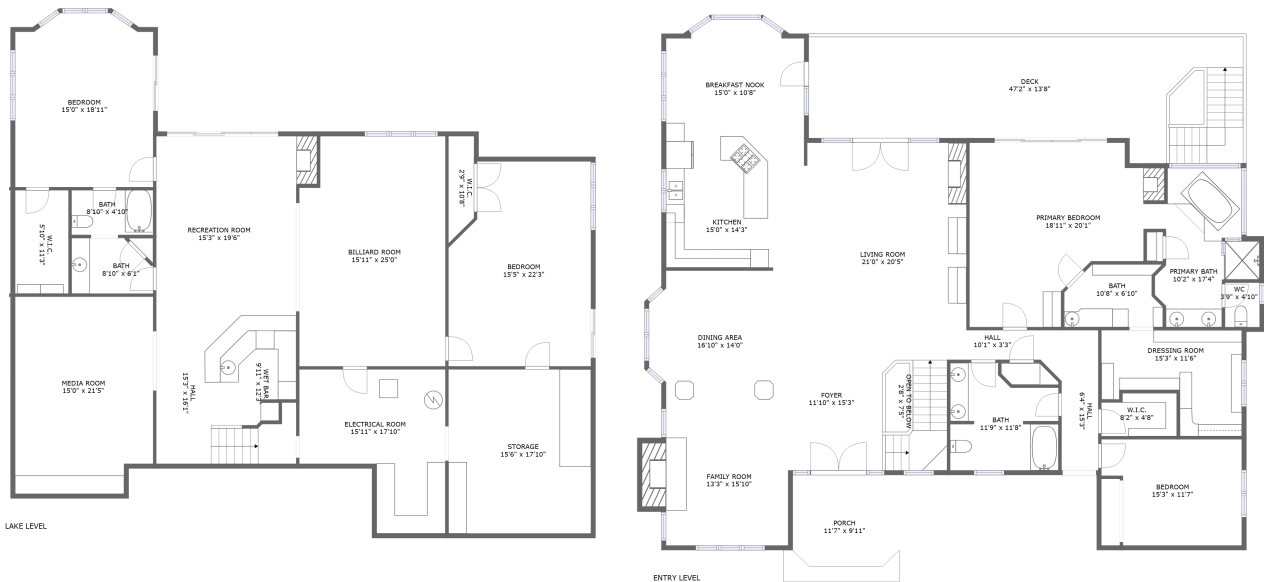
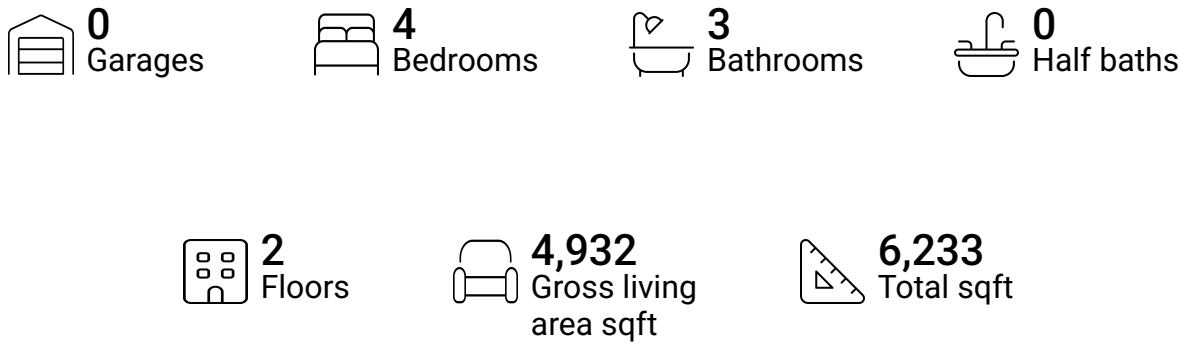


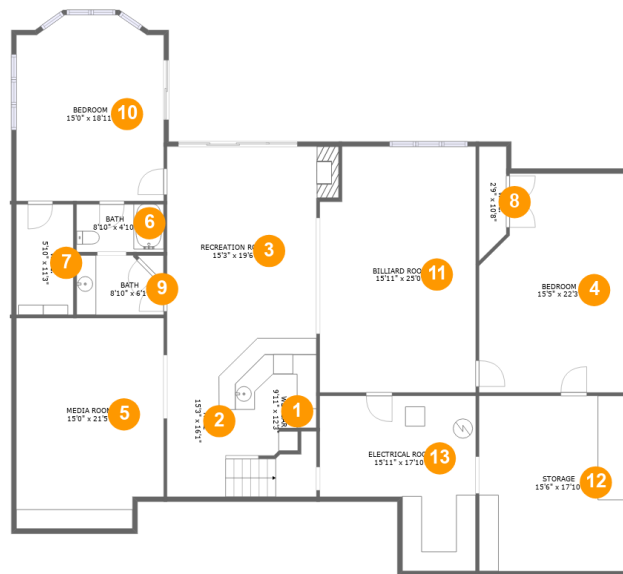
720 Boardwalk Drive, North Shore, Moneta, Franklin
County, Virginia, United States, 24121



Property summary



720 Boardwalk Drive, North Shore, Moneta, Franklin County, Virginia, United States, 24121



Room dimensions

Floor 1

Total sqft: 2720 Living area: 2189

#		Dimensions	sqft	Counted as living area
1	Wet Bar	9'11" x 12'3"	113 sq. ft	Yes
2	Hall	15'3" x 16'1"	129 sq. ft	Yes
3	Recreation Room	15'3" x 19'6"	313 sq. ft	Yes
4	Bedroom	15'5" x 22'3"	321 sq. ft	Yes
5	Media Room	15'0" x 21'5"	311 sq. ft	Yes
6	Bath	8'10" x 4'10"	43 sq. ft	Yes
7	W.I.C.	5'10" x 11'3"	65 sq. ft	Yes
8	W.I.C.	2'9" x 10'8"	29 sq. ft	Yes
9	Bath	8'10" x 6'1"	48 sq. ft	Yes
10	Bedroom	15'0" x 18'11"	271 sq. ft	Yes
11	Billiard Room	15'11" x 25'0"	385 sq. ft	Yes

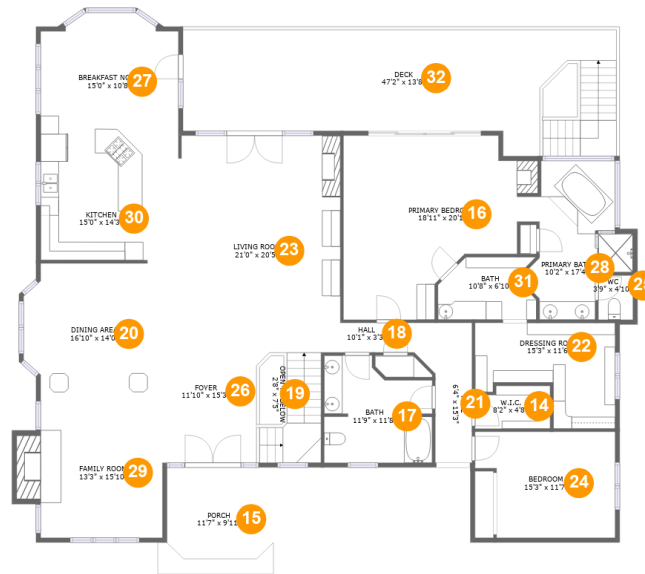
Scan captured on Wed, 02 Apr 2025 20:43:02 GMT

Information is calculated by Cubicasa technology deemed highly reliable but not guaranteed.

**720 Boardwalk Drive, North Shore, Moneta, Franklin
County, Virginia, United States, 24121**

#		Dimensions	sqft	Counted as living area
12	Storage	15'6" x 17'10"	276 sq. ft	No
13	Electrical Room	15'11" x 17'10"	220 sq. ft	No

720 Boardwalk Drive, North Shore, Moneta, Franklin County, Virginia, United States, 24121



Room dimensions

Floor 2

Total sqft: 3513 Living area: 2743

#		Dimensions	sqft	Counted as living area
14	W.I.C.	8'2" x 4'8"	36 sq. ft	Yes
15	Porch	11'7" x 9'11"	138 sq. ft	No
16	Primary Bedroom	18'11" x 20'1"	323 sq. ft	Yes
17	Bath	11'9" x 11'8"	119 sq. ft	Yes
18	Hall	10'1" x 3'3"	33 sq. ft	Yes
19	Open To Below	2'8" x 7'5"	19 sq. ft	No
20	Dining Area	16'10" x 14'0"	204 sq. ft	Yes
21	Hall	6'4" x 15'3"	71 sq. ft	Yes
22	Dressing Room	15'3" x 11'6"	135 sq. ft	Yes
23	Living Room	21'0" x 20'5"	374 sq. ft	Yes
24	Bedroom	15'3" x 11'7"	158 sq. ft	Yes

Scan captured on Wed, 02 Apr 2025 20:43:02 GMT

Information is calculated by Cubicasa technology deemed highly reliable but not guaranteed.

**720 Boardwalk Drive, North Shore, Moneta, Franklin
County, Virginia, United States, 24121**

#		Dimensions	sqft	Counted as living area
25	WC	3'9" x 4'10"	18 sq. ft	Yes
26	Foyer	11'10" x 15'3"	234 sq. ft	Yes
27	Breakfast Nook	15'0" x 10'8"	160 sq. ft	Yes
28	Primary Bath	10'2" x 17'4"	148 sq. ft	Yes
29	Family Room	13'3" x 15'10"	226 sq. ft	Yes
30	Kitchen	15'0" x 14'3"	211 sq. ft	Yes
31	Bath	10'8" x 6'10"	64 sq. ft	Yes
32	Deck	47'2" x 13'8"	574 sq. ft	No

**720 Boardwalk Drive, North Shore, Moneta, Franklin
County, Virginia, United States, 24121**

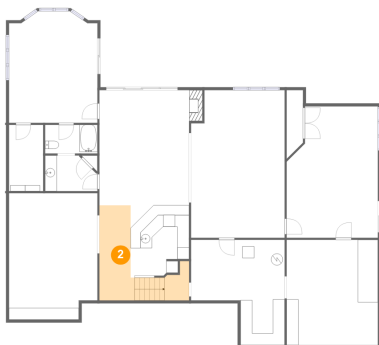
1 Floor 1 - Wet Bar



Dimensions: 9'11" x 12'3"
Area: 113 sq. ft
Counted as living area: Yes

Heated: Yes
Finished: Yes
Enclosed: Yes
Contiguous: Yes
Permitted: Yes
Wet space: No
Addition: No
Conversion: No

2 Floor 1 - Hall

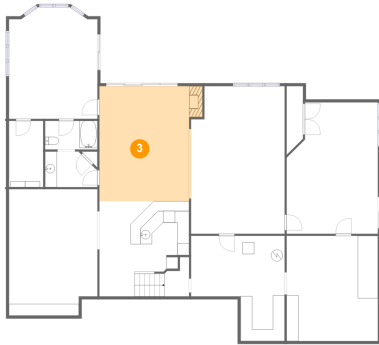


Dimensions: 15'3" x 16'1"
Area: 129 sq. ft
Counted as living area: Yes

Heated: Yes
Finished: Yes
Enclosed: Yes
Contiguous: Yes
Permitted: Yes
Wet space: No
Addition: No
Conversion: No

720 Boardwalk Drive, North Shore, Moneta, Franklin
County, Virginia, United States, 24121

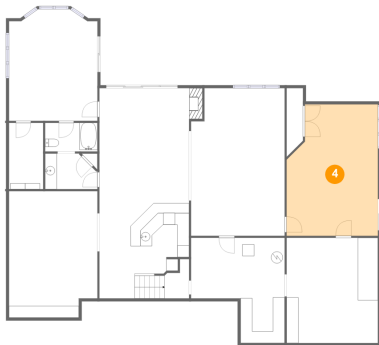
3 Floor 1 - Recreation Room



Dimensions: 15'3" x 19'6"
Area: 313 sq. ft
Counted as living area: Yes

Heated: Yes
Finished: Yes
Enclosed: Yes
Contiguous: Yes
Permitted: Yes
Wet space: No
Addition: No
Conversion: No

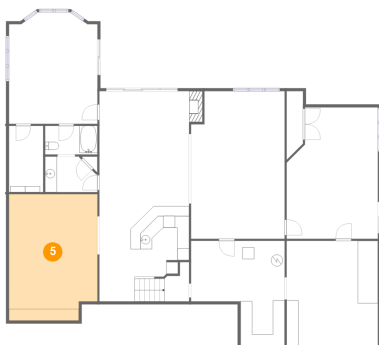
4 Floor 1 - Bedroom



Dimensions: 15'5" x 22'3"
Area: 321 sq. ft
Counted as living area: Yes

Heated: Yes
Finished: Yes
Enclosed: Yes
Contiguous: Yes
Permitted: Yes
Wet space: No
Addition: No
Conversion: No

5 Floor 1 - Media Room

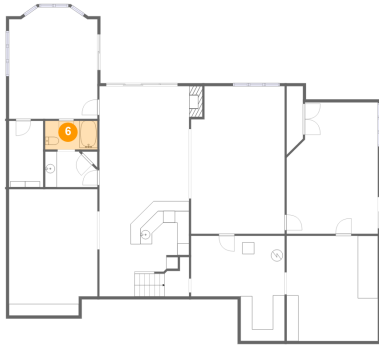


Dimensions: 15'0" x 21'5"
Area: 311 sq. ft
Counted as living area: Yes

Heated: Yes
Finished: Yes
Enclosed: Yes
Contiguous: Yes
Permitted: Yes
Wet space: No
Addition: No
Conversion: No

720 Boardwalk Drive, North Shore, Moneta, Franklin
County, Virginia, United States, 24121

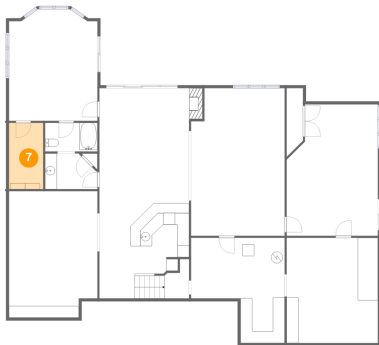
6 Floor 1 - Bath



Dimensions: 8'10" x 4'10"
Area: 43 sq. ft
Counted as living area: Yes

Heated: Yes
Finished: Yes
Enclosed: Yes
Contiguous: Yes
Permitted: Yes
Wet space: Yes
Addition: No
Conversion: No

7 Floor 1 - W.I.C.



Dimensions: 5'10" x 11'3"
Area: 65 sq. ft
Counted as living area: Yes

Heated: Yes
Finished: Yes
Enclosed: Yes
Contiguous: Yes
Permitted: Yes
Wet space: No
Addition: No
Conversion: No

8 Floor 1 - W.I.C.

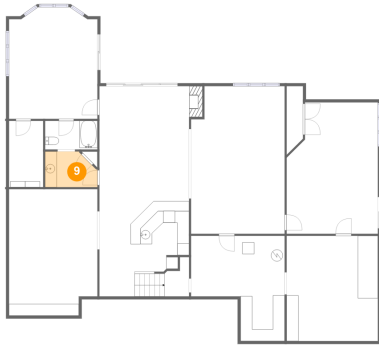


Dimensions: 2'9" x 10'8"
Area: 29 sq. ft
Counted as living area: Yes

Heated: Yes
Finished: Yes
Enclosed: Yes
Contiguous: Yes
Permitted: Yes
Wet space: No
Addition: No
Conversion: No

720 Boardwalk Drive, North Shore, Moneta, Franklin
County, Virginia, United States, 24121

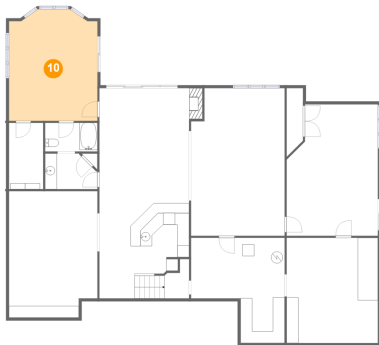
9 Floor 1 - Bath



Dimensions: 8'10" x 6'1"
Area: 48 sq. ft
Counted as living area: Yes

Heated: Yes
Finished: Yes
Enclosed: Yes
Contiguous: Yes
Permitted: Yes
Wet space: Yes
Addition: No
Conversion: No

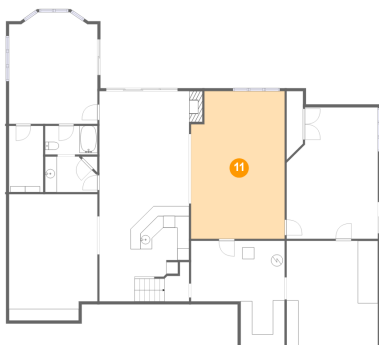
10 Floor 1 - Bedroom



Dimensions: 15'0" x 18'11"
Area: 271 sq. ft
Counted as living area: Yes

Heated: Yes
Finished: Yes
Enclosed: Yes
Contiguous: Yes
Permitted: Yes
Wet space: No
Addition: No
Conversion: No

11 Floor 1 - Billiard Room

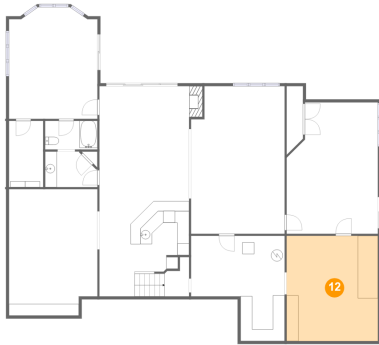


Dimensions: 15'11" x 25'0"
Area: 385 sq. ft
Counted as living area: Yes

Heated: Yes
Finished: Yes
Enclosed: Yes
Contiguous: Yes
Permitted: Yes
Wet space: No
Addition: No
Conversion: No

720 Boardwalk Drive, North Shore, Moneta, Franklin
County, Virginia, United States, 24121

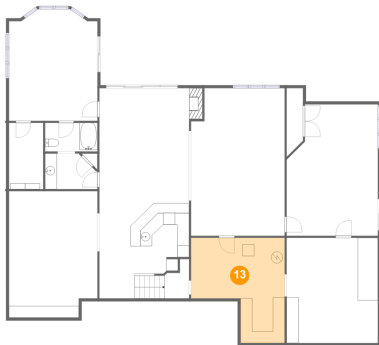
12 Floor 1 - Storage



Dimensions: 15'6" x 17'10"
Area: 276 sq. ft
Counted as living area: No

Heated: No
Finished: No
Enclosed: No
Contiguous: Yes
Permitted: Yes
Wet space: No
Addition: No
Conversion: No

13 Floor 1 - Electrical Room



Dimensions: 15'11" x 17'10"
Area: 220 sq. ft
Counted as living area: No

Heated: No
Finished: No
Enclosed: Yes
Contiguous: Yes
Permitted: Yes
Wet space: No
Addition: No
Conversion: No

14 Floor 2 - W.I.C.

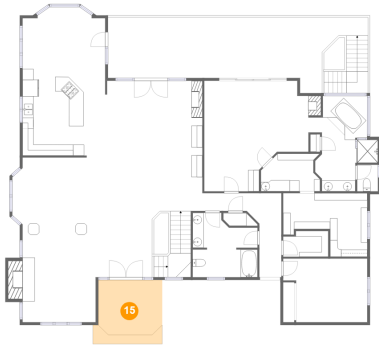


Dimensions: 8'2" x 4'8"
Area: 36 sq. ft
Counted as living area: Yes

Heated: Yes
Finished: Yes
Enclosed: Yes
Contiguous: Yes
Permitted: Yes
Wet space: No
Addition: No
Conversion: No

720 Boardwalk Drive, North Shore, Moneta, Franklin
County, Virginia, United States, 24121

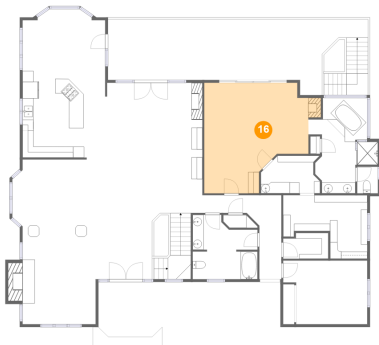
15 Floor 2 - Porch



Dimensions: 11'7" x 9'11"
Area: 138 sq. ft
Counted as living area: No

Heated: No
Finished: Yes
Enclosed: No
Contiguous: Yes
Permitted: Yes
Wet space: No
Addition: No
Conversion: No

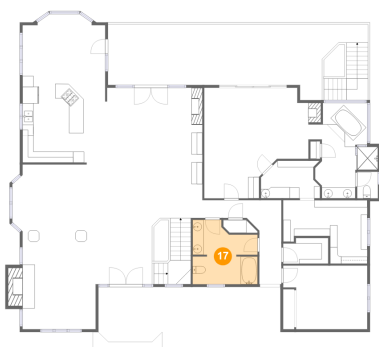
16 Floor 2 - Primary Bedroom



Dimensions: 18'11" x 20'1"
Area: 323 sq. ft
Counted as living area: Yes

Heated: Yes
Finished: Yes
Enclosed: Yes
Contiguous: Yes
Permitted: Yes
Wet space: No
Addition: No
Conversion: No

17 Floor 2 - Bath

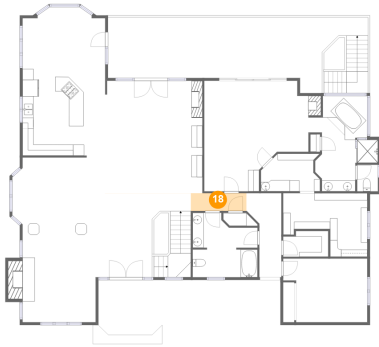


Dimensions: 11'9" x 11'8"
Area: 119 sq. ft
Counted as living area: Yes

Heated: Yes
Finished: Yes
Enclosed: Yes
Contiguous: Yes
Permitted: Yes
Wet space: Yes
Addition: No
Conversion: No

720 Boardwalk Drive, North Shore, Moneta, Franklin
County, Virginia, United States, 24121

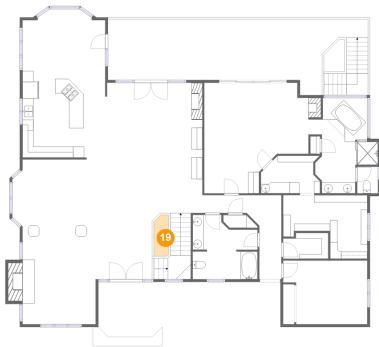
18 Floor 2 - Hall



Dimensions: 10'1" x 3'3"
Area: 33 sq. ft
Counted as living area: Yes

Heated: Yes
Finished: Yes
Enclosed: Yes
Contiguous: Yes
Permitted: Yes
Wet space: No
Addition: No
Conversion: No

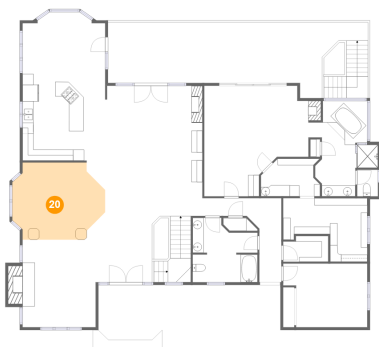
19 Floor 2 - Open To Below



Dimensions: 2'8" x 7'5"
Area: 19 sq. ft
Counted as living area: No

Heated: No
Finished: No
Enclosed: No
Contiguous: Yes
Permitted: No
Wet space: No
Addition: No
Conversion: No

20 Floor 2 - Dining Area



Dimensions: 16'10" x 14'0"
Area: 204 sq. ft
Counted as living area: Yes

Heated: Yes
Finished: Yes
Enclosed: Yes
Contiguous: Yes
Permitted: Yes
Wet space: No
Addition: No
Conversion: No

720 Boardwalk Drive, North Shore, Moneta, Franklin
County, Virginia, United States, 24121

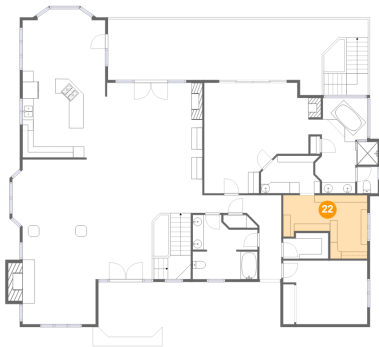
21 Floor 2 - Hall



Dimensions: 6'4" x 15'3"
Area: 71 sq. ft
Counted as living area: Yes

Heated: Yes
Finished: Yes
Enclosed: Yes
Contiguous: Yes
Permitted: Yes
Wet space: No
Addition: No
Conversion: No

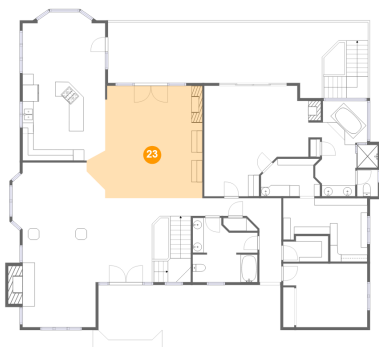
22 Floor 2 - Dressing Room



Dimensions: 15'3" x 11'6"
Area: 135 sq. ft
Counted as living area: Yes

Heated: Yes
Finished: Yes
Enclosed: Yes
Contiguous: Yes
Permitted: Yes
Wet space: No
Addition: No
Conversion: No

23 Floor 2 - Living Room



Dimensions: 21'0" x 20'5"
Area: 374 sq. ft
Counted as living area: Yes

Heated: Yes
Finished: Yes
Enclosed: Yes
Contiguous: Yes
Permitted: Yes
Wet space: No
Addition: No
Conversion: No

**720 Boardwalk Drive, North Shore, Moneta, Franklin
County, Virginia, United States, 24121**

24 Floor 2 - Bedroom



Dimensions: 15'3" x 11'7"
Area: 158 sq. ft
Counted as living area: Yes

Heated: Yes
Finished: Yes
Enclosed: Yes
Contiguous: Yes
Permitted: Yes
Wet space: No
Addition: No
Conversion: No

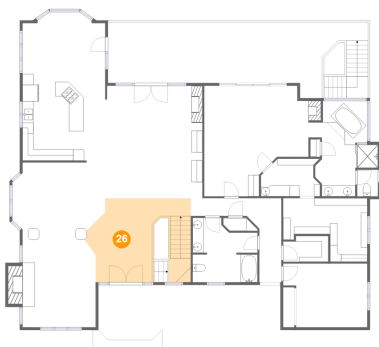
25 Floor 2 - WC



Dimensions: 3'9" x 4'10"
Area: 18 sq. ft
Counted as living area: Yes

Heated: Yes
Finished: Yes
Enclosed: Yes
Contiguous: Yes
Permitted: Yes
Wet space: Yes
Addition: No
Conversion: No

26 Floor 2 - Foyer

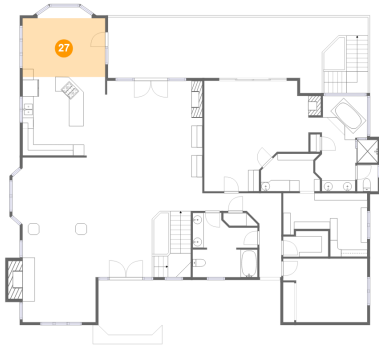


Dimensions: 11'10" x 15'3"
Area: 234 sq. ft
Counted as living area: Yes

Heated: Yes
Finished: Yes
Enclosed: Yes
Contiguous: Yes
Permitted: Yes
Wet space: No
Addition: No
Conversion: No

720 Boardwalk Drive, North Shore, Moneta, Franklin
County, Virginia, United States, 24121

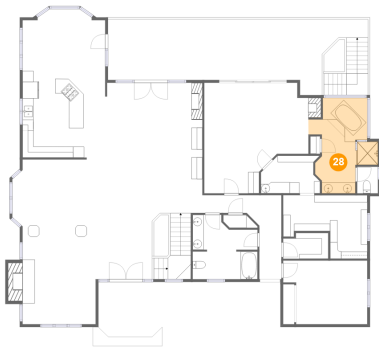
27 Floor 2 - Breakfast Nook



Dimensions: 15'0" x 10'8"
Area: 160 sq. ft
Counted as living area: Yes

Heated: Yes
Finished: Yes
Enclosed: Yes
Contiguous: Yes
Permitted: Yes
Wet space: No
Addition: No
Conversion: No

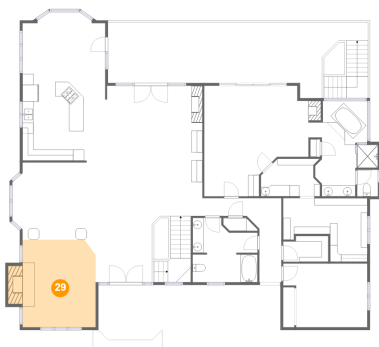
28 Floor 2 - Primary Bath



Dimensions: 10'2" x 17'4"
Area: 148 sq. ft
Counted as living area: Yes

Heated: Yes
Finished: Yes
Enclosed: Yes
Contiguous: Yes
Permitted: Yes
Wet space: Yes
Addition: No
Conversion: No

29 Floor 2 - Family Room

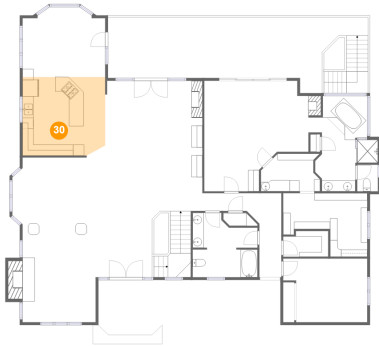


Dimensions: 13'3" x 15'10"
Area: 226 sq. ft
Counted as living area: Yes

Heated: Yes
Finished: Yes
Enclosed: Yes
Contiguous: Yes
Permitted: Yes
Wet space: No
Addition: No
Conversion: No

**720 Boardwalk Drive, North Shore, Moneta, Franklin
County, Virginia, United States, 24121**

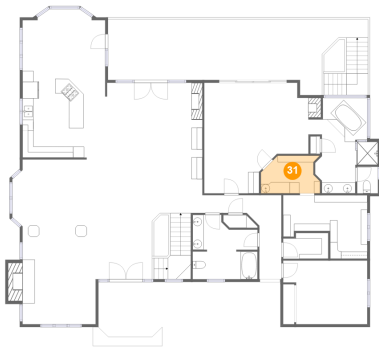
30 Floor 2 - Kitchen



Dimensions: 15'0" x 14'3"
Area: 211 sq. ft
Counted as living area: Yes

Heated: Yes
Finished: Yes
Enclosed: Yes
Contiguous: Yes
Permitted: Yes
Wet space: No
Addition: No
Conversion: No

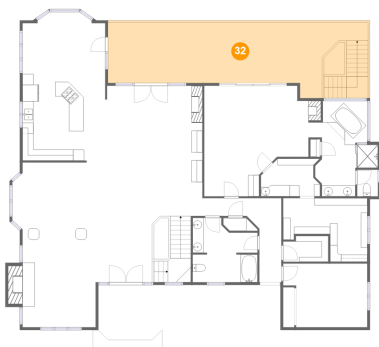
31 Floor 2 - Bath



Dimensions: 10'8" x 6'10"
Area: 64 sq. ft
Counted as living area: Yes

Heated: Yes
Finished: Yes
Enclosed: Yes
Contiguous: Yes
Permitted: Yes
Wet space: Yes
Addition: No
Conversion: No

32 Floor 2 - Deck



Dimensions: 47'2" x 13'8"
Area: 574 sq. ft
Counted as living area: No

Heated: No
Finished: Yes
Enclosed: No
Contiguous: Yes
Permitted: Yes
Wet space: No
Addition: No
Conversion: No