



Home report


1044 East Street N,Suffield,CT,US




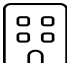
Property summary


**1** Garages


**3** Bedrooms

**1** Bathrooms

**0** Half baths

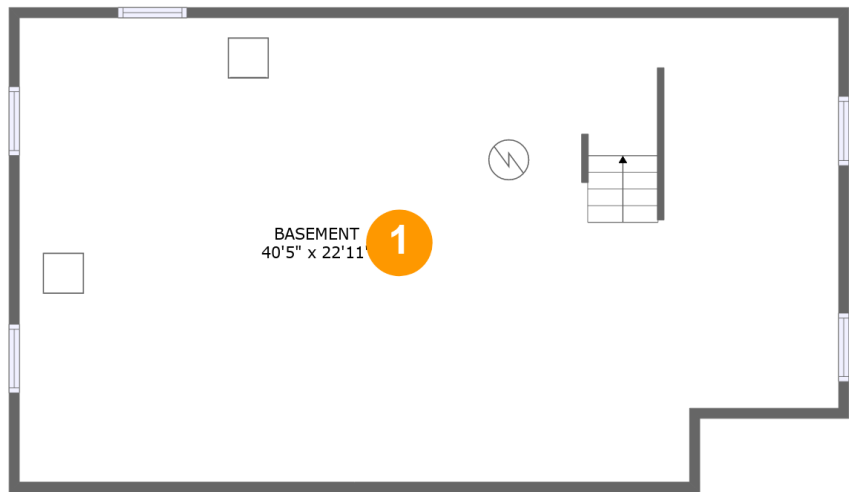
**2** Floors

**1,228** Gross living area sqft

**2,794** Total sqft

Home report

1044 East Street N,Suffield,CT,US



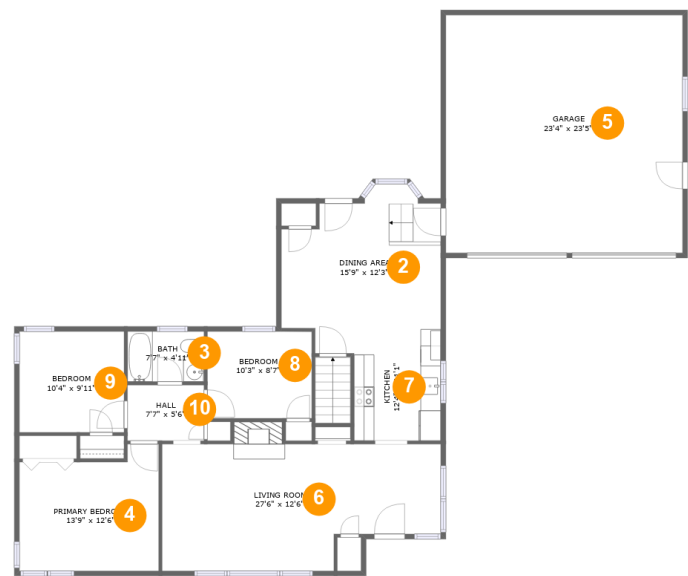
Room dimensions

Floor 1 Total sqft: 965 Living area: 0

#		Dimensions	sqft	Counted as living area
1	Basement	40'5" x 22'11"	900 sq. ft	No

Home report

1044 East Street N,Suffield,CT,US

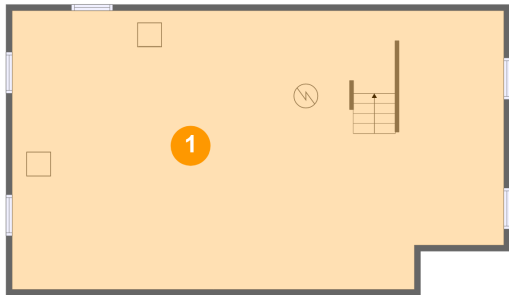


Room dimensions

Floor 2Total sqft: 1829 Living area: 1228

#		Dimensions	sqft	Counted as living area
2	Dining Area	15'9" x 12'3"	184 sq. ft	Yes
3	Bath	7'7" x 4'11"	37 sq. ft	Yes
4	Primary Bedroom	13'9" x 12'6"	153 sq. ft	Yes
5	Garage	23'4" x 23'5"	546 sq. ft	No
6	Living Room	27'6" x 12'6"	315 sq. ft	Yes
7	Kitchen	12'4" x 11'1"	104 sq. ft	Yes
8	Bedroom	10'3" x 8'7"	88 sq. ft	Yes
9	Bedroom	10'4" x 9'11"	102 sq. ft	Yes
10	Hall	7'7" x 5'6"	41 sq. ft	Yes

1 Floor 1 - Basement



Dimensions: 40'5" x 22'11"
Area: 900 sq. ft
Counted as living area: No

Heated: No
Finished: No
Enclosed: Yes
Contiguous: Yes
Permitted: Yes
Wet space: No
Addition: No
Conversion: No

2 Floor 2 - Dining Area



Dimensions: 15'9" x 12'3"
Area: 184 sq. ft
Counted as living area: Yes

Heated: Yes
Finished: Yes
Enclosed: Yes
Contiguous: Yes
Permitted: Yes
Wet space: No
Addition: No
Conversion: No

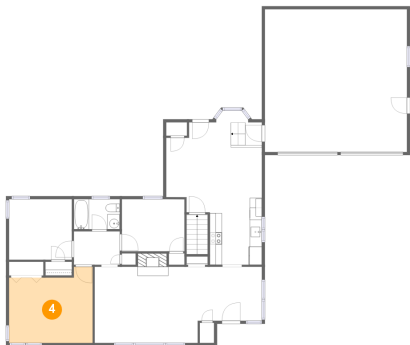
3 Floor 2 - Bath



Dimensions: 7'7" x 4'11"
Area: 37 sq. ft
Counted as living area: Yes

Heated: Yes
Finished: Yes
Enclosed: Yes
Contiguous: Yes
Permitted: Yes
Wet space: Yes
Addition: No
Conversion: No

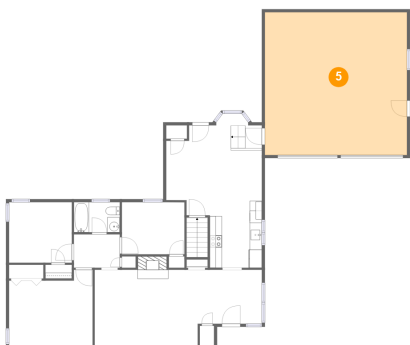
4 Floor 2 - Primary Bedroom



Dimensions: 13'9" x 12'6"
Area: 153 sq. ft
Counted as living area: Yes

Heated: Yes
Finished: Yes
Enclosed: Yes
Contiguous: Yes
Permitted: Yes
Wet space: No
Addition: No
Conversion: No

5 Floor 2 - Garage



Dimensions: 23'4" x 23'5"
Area: 546 sq. ft
Counted as living area: No

Heated: No
Finished: No
Enclosed: Yes
Contiguous: Yes
Permitted: Yes
Wet space: No
Addition: No
Conversion: No

6 Floor 2 - Living Room



Dimensions: 27'6" x 12'6"
Area: 315 sq. ft
Counted as living area: Yes

Heated: Yes
Finished: Yes
Enclosed: Yes
Contiguous: Yes
Permitted: Yes
Wet space: No
Addition: No
Conversion: No

7 Floor 2 - Kitchen



Dimensions: 12'4" x 11'1"
Area: 104 sq. ft
Counted as living area: Yes

Heated: Yes
Finished: Yes
Enclosed: Yes
Contiguous: Yes
Permitted: Yes
Wet space: No
Addition: No
Conversion: No

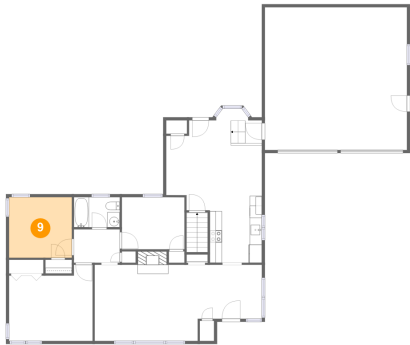
8 Floor 2 - Bedroom



Dimensions: 10'3" x 8'7"
Area: 88 sq. ft
Counted as living area: Yes

Heated: Yes
Finished: Yes
Enclosed: Yes
Contiguous: Yes
Permitted: Yes
Wet space: No
Addition: No
Conversion: No

9 Floor 2 - Bedroom



Dimensions: 10'4" x 9'11"
Area: 102 sq. ft
Counted as living area: Yes

Heated: Yes
Finished: Yes
Enclosed: Yes
Contiguous: Yes
Permitted: Yes
Wet space: No
Addition: No
Conversion: No

10 Floor 2 - Hall



Dimensions: 7'7" x 5'6"
Area: 41 sq. ft
Counted as living area: Yes

Heated: Yes
Finished: Yes
Enclosed: Yes
Contiguous: Yes
Permitted: Yes
Wet space: No
Addition: No
Conversion: No