

4224 Twin Mountains Circle, Falling Creek, Vinton, Roanoke County, Virginia, United States,

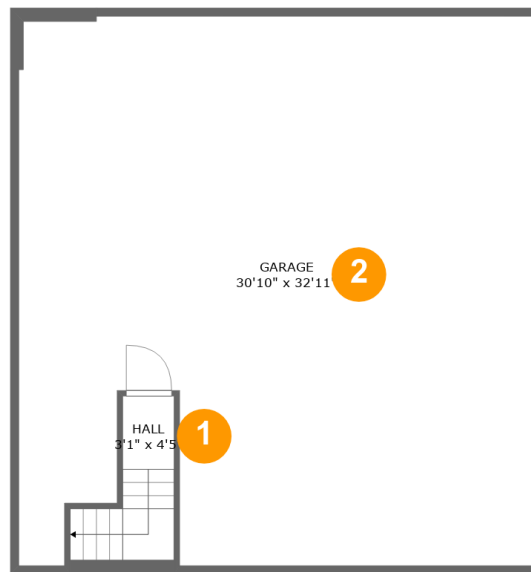


Property Summary

1 garages **4** bedrooms **2** bathrooms **1** half baths

3 floors **3,116** Gross Living Area sqft **5,991** total sqft

4224 Twin Mountains Circle, Falling Creek, Vinton, Roanoke County, Virginia, United States,



Room Dimensions

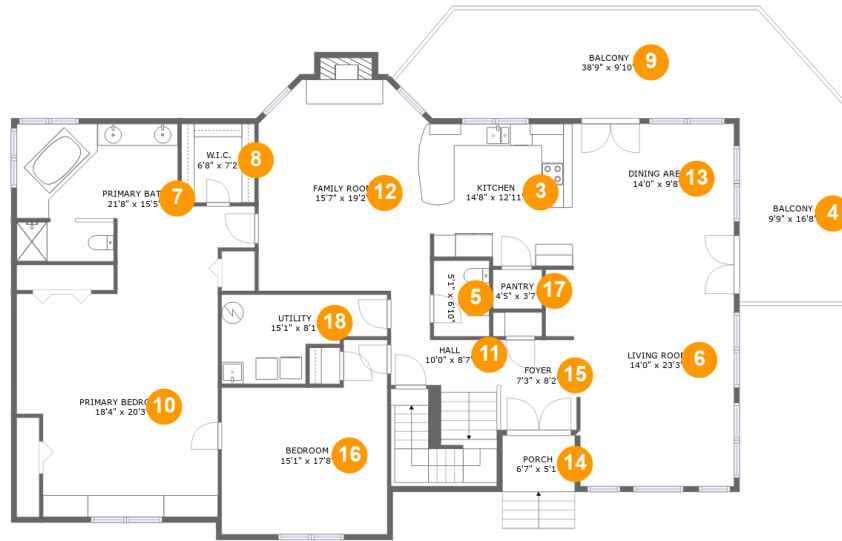
Floor 1

Total sqft: 1081

Living area: 0

#	Room name	Dimensions	Area (sqft)	Counted as Living Area
1	Hall	3'1" x 4'5"	40 sq. ft	No
2	Garage	30'10" x 32'11"	963 sq. ft	No

4224 Twin Mountains Circle, Falling Creek, Vinton, Roanoke County, Virginia, United States,



Room Dimensions

Floor 2

Total sqft: 2938

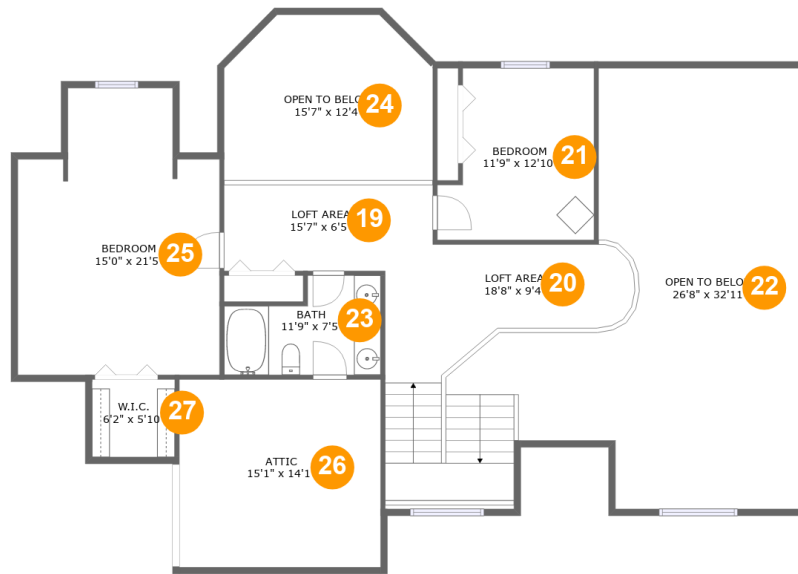
Living area: 2384

#	Room name	Dimensions	Area (sqft)	Counted as Living Area
3	Kitchen	14'8" x 12'11"	184 sq. ft	Yes
4	Balcony	9'9" x 16'8"	162 sq. ft	No
5	Wc	5'1" x 6'10"	35 sq. ft	Yes
6	Living Room	14'0" x 23'3"	325 sq. ft	Yes
7	Primary Bath	21'8" x 15'5"	239 sq. ft	Yes
8	W.i.c.	6'8" x 7'2"	48 sq. ft	Yes
9	Balcony	38'9" x 9'10"	346 sq. ft	No
10	Primary Bedroom	18'4" x 20'3"	349 sq. ft	Yes
11	Hall	10'0" x 8'7"	138 sq. ft	Yes
12	Family Room	15'7" x 19'2"	287 sq. ft	Yes
13	Dining Area	14'0" x 9'8"	135 sq. ft	Yes

**4224 Twin Mountains Circle, Falling Creek,
Vinton, Roanoke County, Virginia, United States,**

#	Room name	Dimensions	Area (sqft)	Counted as Living Area
14	Porch	6'7" x 5'1"	34 sq. ft	No
15	Foyer	7'3" x 8'2"	71 sq. ft	Yes
16	Bedroom	15'1" x 17'8"	218 sq. ft	Yes
17	Pantry	4'5" x 3'7"	16 sq. ft	Yes
18	Utility	15'1" x 8'1"	92 sq. ft	Yes

4224 Twin Mountains Circle, Falling Creek, Vinton, Roanoke County, Virginia, United States,



Room Dimensions

Floor 3

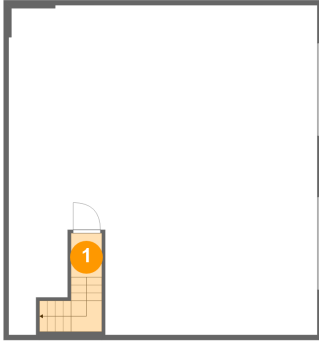
Total sqft: 1972

Living area: 732

#	Room name	Dimensions	Area (sqft)	Counted as Living Area
19	Loft Area	15'7" x 6'5"	102 sq. ft	Yes
20	Loft Area	18'8" x 9'4"	230 sq. ft	No
21	Bedroom	11'9" x 12'10"	134 sq. ft	Yes
22	Open To Below	26'8" x 32'11"	545 sq. ft	No
23	Bath	11'9" x 7'5"	73 sq. ft	Yes
24	Open To Below	15'7" x 12'4"	178 sq. ft	No
25	Bedroom	15'0" x 21'5"	284 sq. ft	Yes
26	Attic	15'1" x 14'1"	138 sq. ft	No
27	W.i.c.	6'2" x 5'10"	36 sq. ft	Yes

4224 Twin Mountains Circle, Falling Creek, Vinton, Roanoke County, Virginia, United States,

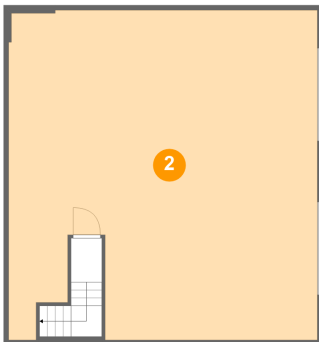
1 Floor 1 - Hall



Dimensions: 3'1" x 4'5"
Area: 40 sq. ft
Counted as Living Area: No

Heated: Yes
Finished: Yes
Enclosed: Yes
Contiguous: No
Permitted: Yes
Wet Space: No
Addition: No
Conversion: No

2 Floor 1 - Garage

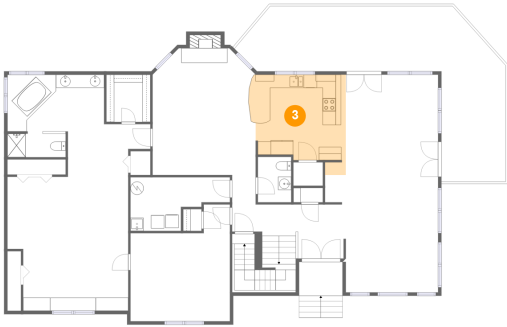


Dimensions: 30'10" x 32'11"
Area: 963 sq. ft
Counted as Living Area: No

Heated: No
Finished: No
Enclosed: Yes
Contiguous: Yes
Permitted: Yes
Wet Space: No
Addition: No
Conversion: No

4224 Twin Mountains Circle, Falling Creek, Vinton, Roanoke County, Virginia, United States,

3 Floor 2 - Kitchen



Dimensions: 14'8" x 12'11"
Area: 184 sq. ft
Counted as Living Area:
Yes

Heated: Yes
Finished: Yes
Enclosed: Yes
Contiguous:
Yes
Permitted: Yes
Wet Space: No
Addition: No
Conversion: No

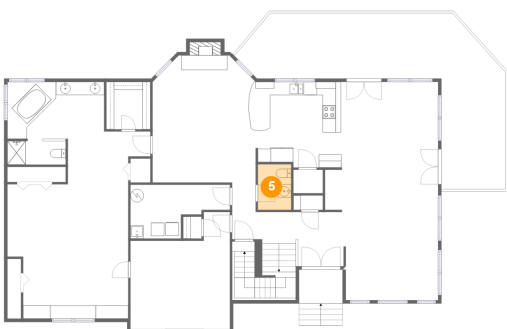
4 Floor 2 - Balcony



Dimensions: 9'9" x 16'8"
Area: 162 sq. ft
Counted as Living Area: No

Heated: No
Finished: Yes
Enclosed: No
Contiguous: Yes
Permitted: Yes
Wet Space: No
Addition: No
Conversion: No

5 Floor 2 - Wc

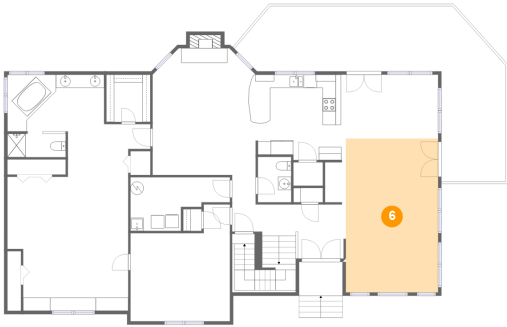


Dimensions: 5'1" x 6'10"
Area: 35 sq. ft
Counted as Living Area:
Yes

Heated: Yes
Finished: Yes
Enclosed: Yes
Contiguous:
Yes
Permitted: Yes
Wet Space: Yes
Addition: No
Conversion: No

**4224 Twin Mountains Circle, Falling Creek,
Vinton, Roanoke County, Virginia, United States,**

6 Floor 2 - Living Room



Dimensions: 14'0" x 23'3"
Area: 325 sq. ft
Counted as Living Area:
Yes

Heated: Yes
Finished: Yes
Enclosed: Yes
Contiguous:
Yes
Permitted: Yes
Wet Space: No
Addition: No
Conversion: No

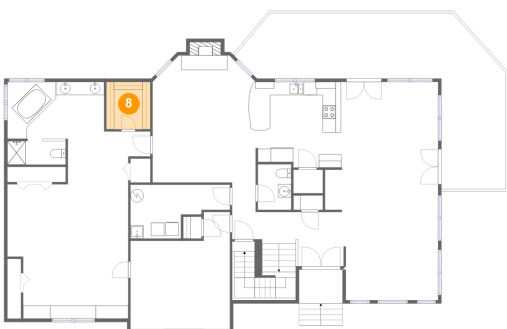
7 Floor 2 - Primary Bath



Dimensions: 21'8" x 15'5"
Area: 239 sq. ft
Counted as Living Area:
Yes

Heated: Yes
Finished: Yes
Enclosed: Yes
Contiguous:
Yes
Permitted: Yes
Wet Space: Yes
Addition: No
Conversion: No

8 Floor 2 - W.i.c.



Dimensions: 6'8" x 7'2"
Area: 48 sq. ft
Counted as Living Area:
Yes

Heated: Yes
Finished: Yes
Enclosed: Yes
Contiguous:
Yes
Permitted: Yes
Wet Space: No
Addition: No
Conversion: No

4224 Twin Mountains Circle, Falling Creek, Vinton, Roanoke County, Virginia, United States,

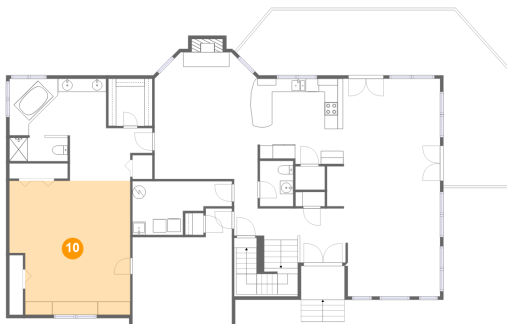
9 Floor 2 - Balcony



Dimensions: 38'9" x 9'10"
Area: 346 sq. ft
Counted as Living Area: No

Heated: No
Finished: Yes
Enclosed: No
Contiguous: Yes
Permitted: Yes
Wet Space: No
Addition: No
Conversion: No

10 Floor 2 - Primary Bedroom



Dimensions: 18'4" x 20'3"
Area: 349 sq. ft
Counted as Living Area:
Yes

Heated: Yes
Finished: Yes
Enclosed: Yes
Contiguous:
Yes
Permitted: Yes
Wet Space: No
Addition: No
Conversion: No

11 Floor 2 - Hall

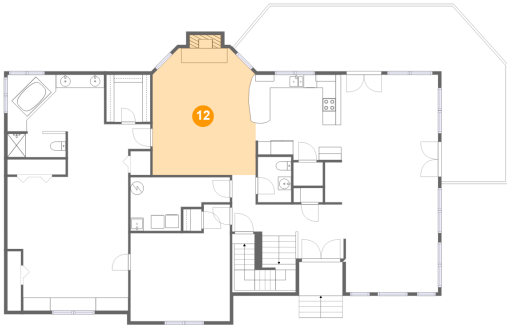


Dimensions: 10'0" x 8'7"
Area: 138 sq. ft
Counted as Living Area:
Yes

Heated: Yes
Finished: Yes
Enclosed: Yes
Contiguous:
Yes
Permitted: Yes
Wet Space: No
Addition: No
Conversion: No

4224 Twin Mountains Circle, Falling Creek, Vinton, Roanoke County, Virginia, United States,

12 Floor 2 - Family Room



Dimensions: 15'7" x 19'2"
Area: 287 sq. ft
Counted as Living Area:
Yes

Heated: Yes
Finished: Yes
Enclosed: Yes
Contiguous:
Yes
Permitted: Yes
Wet Space: No
Addition: No
Conversion: No

13 Floor 2 - Dining Area



Dimensions: 14'0" x 9'8"
Area: 135 sq. ft
Counted as Living Area:
Yes

Heated: Yes
Finished: Yes
Enclosed: Yes
Contiguous:
Yes
Permitted: Yes
Wet Space: No
Addition: No
Conversion: No

14 Floor 2 - Porch

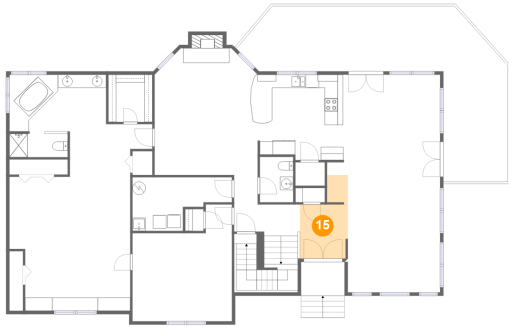


Dimensions: 6'7" x 5'1"
Area: 34 sq. ft
Counted as Living Area: No

Heated: No
Finished: Yes
Enclosed: No
Contiguous: Yes
Permitted: Yes
Wet Space: No
Addition: No
Conversion: No

4224 Twin Mountains Circle, Falling Creek, Vinton, Roanoke County, Virginia, United States,

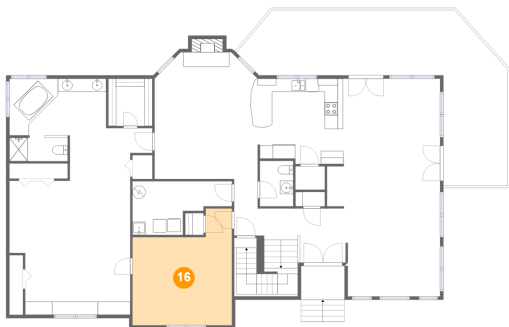
15 Floor 2 - Foyer



Dimensions: 7'3" x 8'2"
Area: 71 sq. ft
Counted as Living Area:
Yes

Heated: Yes
Finished: Yes
Enclosed: Yes
Contiguous:
Yes
Permitted: Yes
Wet Space: No
Addition: No
Conversion: No

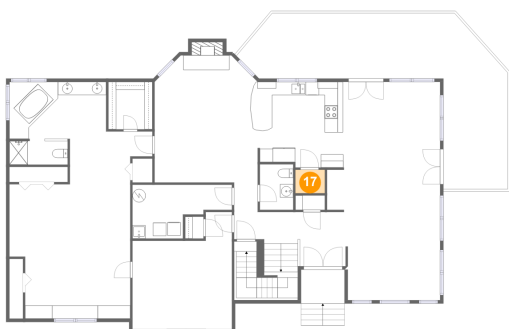
16 Floor 2 - Bedroom



Dimensions: 15'1" x 17'8"
Area: 218 sq. ft
Counted as Living Area:
Yes

Heated: Yes
Finished: Yes
Enclosed: Yes
Contiguous:
Yes
Permitted: Yes
Wet Space: No
Addition: No
Conversion: No

17 Floor 2 - Pantry

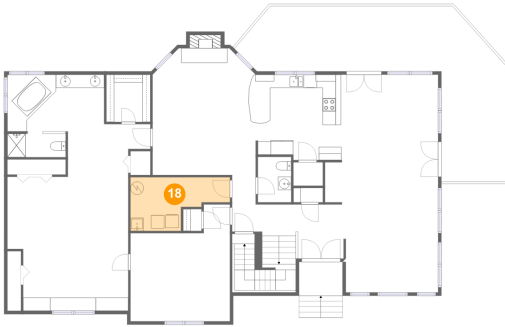


Dimensions: 4'5" x 3'7"
Area: 16 sq. ft
Counted as Living Area:
Yes

Heated: Yes
Finished: Yes
Enclosed: Yes
Contiguous:
Yes
Permitted: Yes
Wet Space: No
Addition: No
Conversion: No

4224 Twin Mountains Circle, Falling Creek, Vinton, Roanoke County, Virginia, United States,

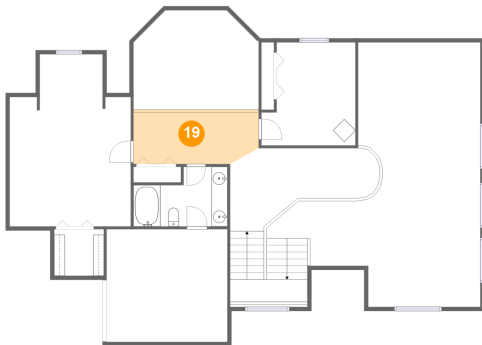
18 Floor 2 - Utility



Dimensions: 15'1" x 8'1"
Area: 92 sq. ft
Counted as Living Area:
Yes

Heated: Yes
Finished: Yes
Enclosed: Yes
Contiguous:
Yes
Permitted: Yes
Wet Space: No
Addition: No
Conversion: No

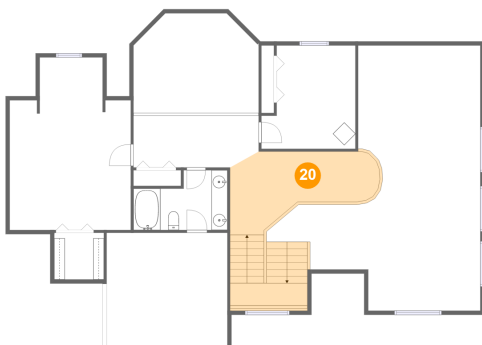
19 Floor 3 - Loft Area



Dimensions: 15'7" x 6'5"
Area: 102 sq. ft
Counted as Living Area:
Yes

Heated: Yes
Finished: Yes
Enclosed: Yes
Contiguous:
Yes
Permitted: Yes
Wet Space: No
Addition: No
Conversion: No

20 Floor 3 - Loft Area

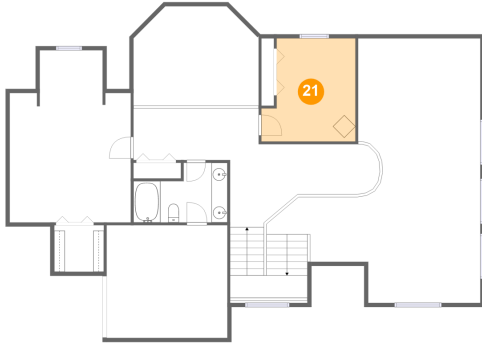


Dimensions: 18'8" x 9'4"
Area: 230 sq. ft
Counted as Living Area: No

Heated: Yes
Finished: Yes
Enclosed: Yes
Contiguous: Yes
Permitted: Yes
Wet Space: No
Addition: No
Conversion: No

4224 Twin Mountains Circle, Falling Creek, Vinton, Roanoke County, Virginia, United States,

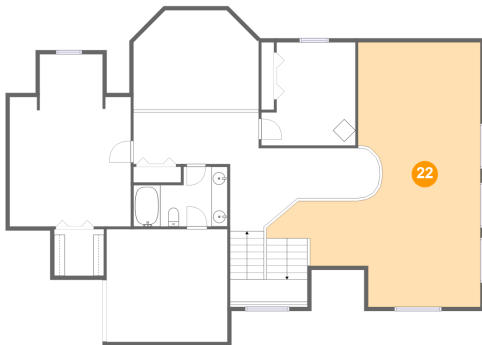
21 Floor 3 - Bedroom



Dimensions: 11'9" x 12'10"
Area: 134 sq. ft
Counted as Living Area:
Yes

Heated: Yes
Finished: Yes
Enclosed: Yes
Contiguous:
Yes
Permitted: Yes
Wet Space: No
Addition: No
Conversion: No

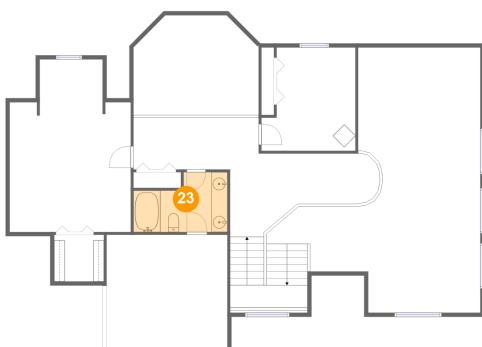
22 Floor 3 - Open To Below



Dimensions: 26'8" x 32'11"
Area: 545 sq. ft
Counted as Living Area: No

Heated: No
Finished: No
Enclosed: No
Contiguous: Yes
Permitted: No
Wet Space: No
Addition: No
Conversion: No

23 Floor 3 - Bath

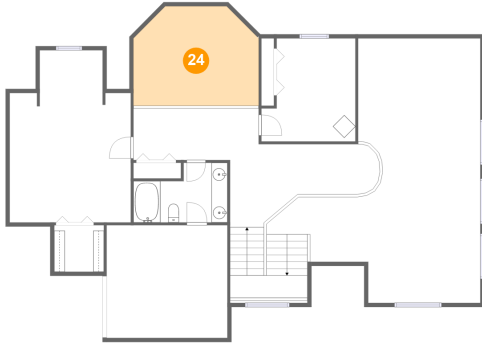


Dimensions: 11'9" x 7'5"
Area: 73 sq. ft
Counted as Living Area:
Yes

Heated: Yes
Finished: Yes
Enclosed: Yes
Contiguous:
Yes
Permitted: Yes
Wet Space: Yes
Addition: No
Conversion: No

4224 Twin Mountains Circle, Falling Creek, Vinton, Roanoke County, Virginia, United States,

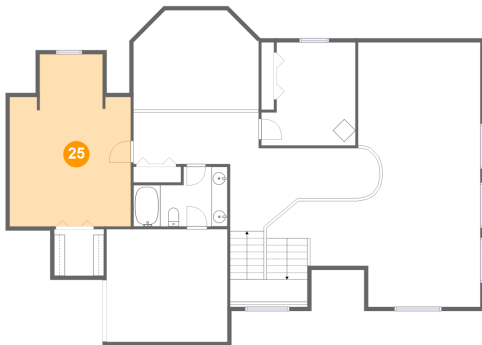
24 Floor 3 - Open To Below



Dimensions: 15'7" x 12'4"
Area: 178 sq. ft
Counted as Living Area: No

Heated: No
Finished: No
Enclosed: No
Contiguous: Yes
Permitted: No
Wet Space: No
Addition: No
Conversion: No

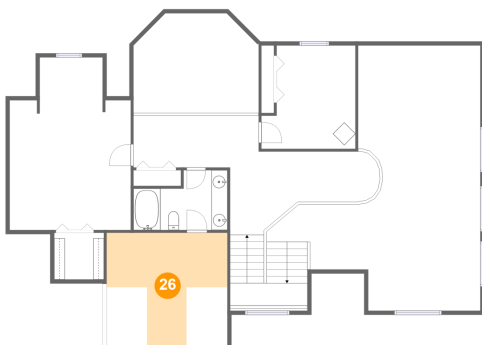
25 Floor 3 - Bedroom



Dimensions: 15'0" x 21'5"
Area: 284 sq. ft
Counted as Living Area:
Yes

Heated: Yes
Finished: Yes
Enclosed: Yes
Contiguous:
Yes
Permitted: Yes
Wet Space: No
Addition: No
Conversion: No

26 Floor 3 - Attic

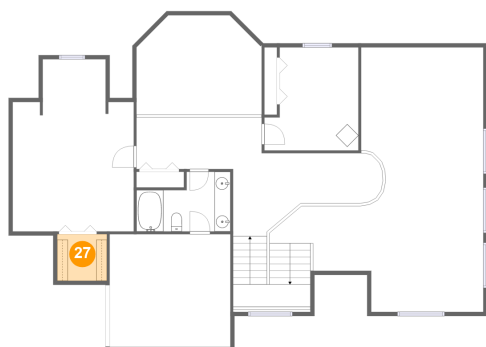


Dimensions: 15'1" x 14'1"
Area: 138 sq. ft
Counted as Living Area: No

Heated: No
Finished: No
Enclosed: Yes
Contiguous: Yes
Permitted: Yes
Wet Space: No
Addition: No
Conversion: No

4224 Twin Mountains Circle, Falling Creek, Vinton, Roanoke County, Virginia, United States,

27 Floor 3 - W.i.c.



Dimensions: 6'2" x 5'10"
Area: 36 sq. ft
Counted as Living Area:
Yes

Heated: Yes
Finished: Yes
Enclosed: Yes
Contiguous:
Yes
Permitted: Yes
Wet Space: No
Addition: No
Conversion: No