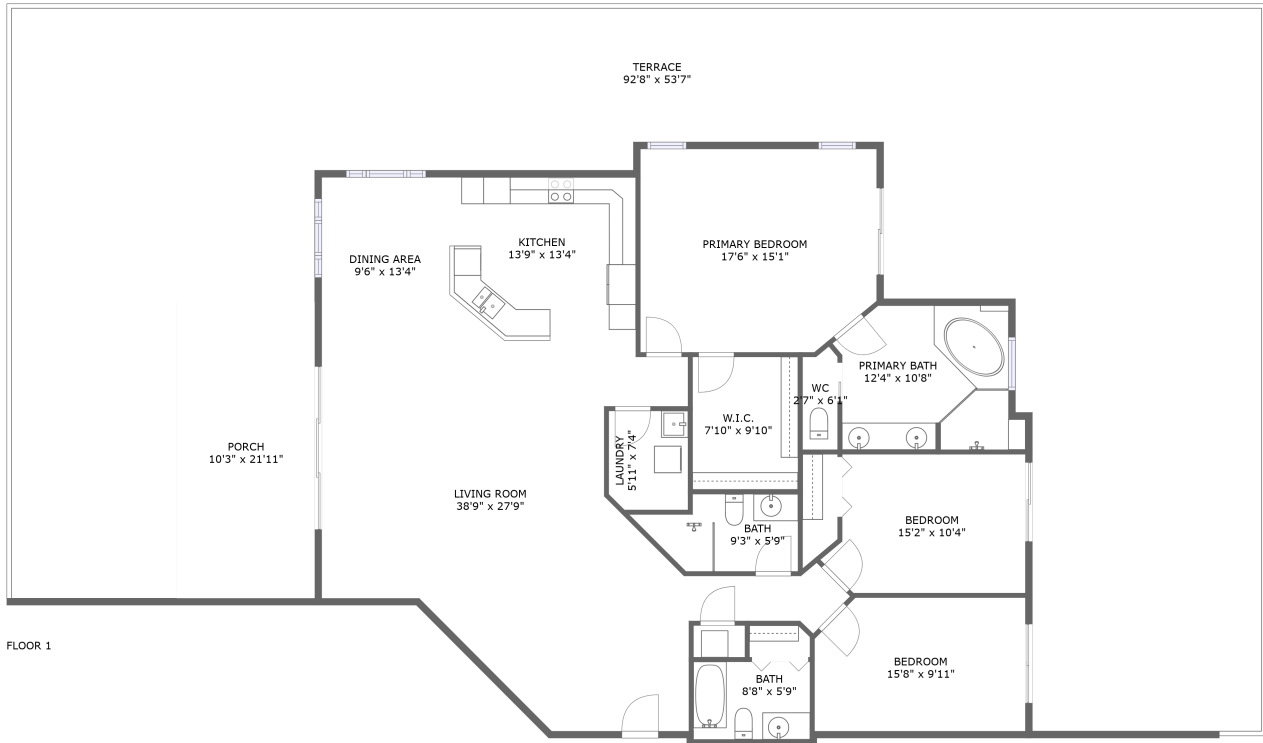



470 Mandalay Avenue, Clearwater Beach, Pinellas County, Florida, United States, 33767, 305



Property summary

 **0** Garages

 **3** Bedrooms

 **3** Bathrooms

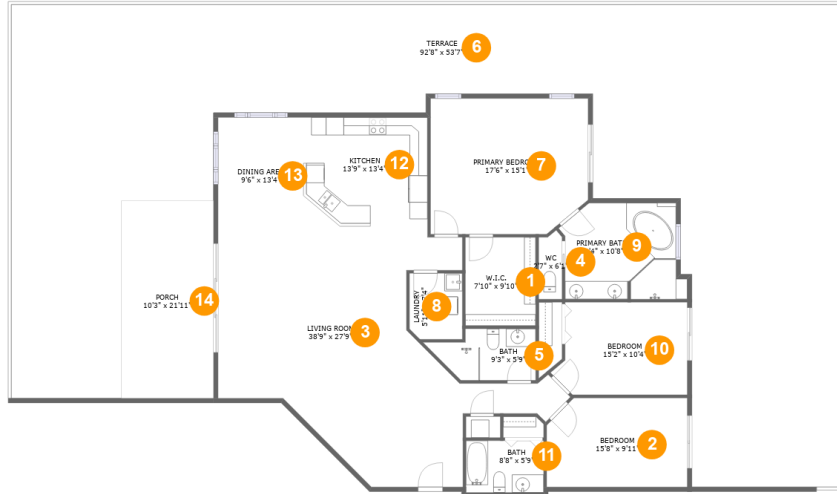
 **0** Half baths

 **1** Floors

 **1,951**
Gross living
area sqft

 **2,175**
Total sqft

470 Mandalay Avenue, Clearwater Beach, Pinellas County, Florida, United States, 33767, 305



Room dimensions

Floor 1

Total sqft: 2175 Living area: 1951

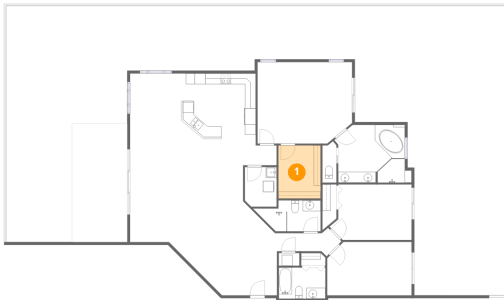
#		Dimensions	sqft	Counted as living area
1	Cl	7'10" x 9'10"	77 sq. ft	Yes
2	Bedroom	15'8" x 9'11"	150 sq. ft	Yes
3	Living Room	38'9" x 27'9"	614 sq. ft	Yes
4	Bath	2'7" x 6'1"	19 sq. ft	Yes
5	Bath	9'3" x 5'9"	56 sq. ft	Yes
6	Outdoor	92'8" x 53'7"	2389 sq. ft	No
7	Bedroom	17'6" x 15'1"	256 sq. ft	Yes
8	Utility	5'11" x 7'4"	43 sq. ft	Yes
9	Bath	12'4" x 10'8"	131 sq. ft	Yes
10	Bedroom	15'2" x 10'4"	142 sq. ft	Yes
11	Bath	8'8" x 5'9"	50 sq. ft	Yes

**470 Mandalay Avenue, Clearwater Beach, Pinellas
County, Florida, United States, 33767, 305**

#		Dimensions	sqft	Counted as living area
12	Kitchen	13'9" x 13'4"	184 sq. ft	Yes
13	Dining Room	9'6" x 13'4"	126 sq. ft	Yes
14	Outdoor	10'3" x 21'11"	224 sq. ft	No

470 Mandalay Avenue, Clearwater Beach, Pinellas County, Florida, United States, 33767, 305

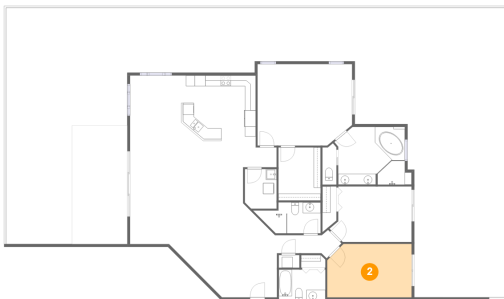
1 Floor 1 - Cl



Dimensions: 7'10" x 9'10"
Area: 77 sq. ft
Counted as living area: Yes

Heated: Yes
Finished: Yes
Enclosed: Yes
Contiguous: Yes
Permitted: Yes
Wet space: No
Addition: No
Conversion: No

2 Floor 1 - Bedroom



Dimensions: 15'8" x 9'11"
Area: 150 sq. ft
Counted as living area: Yes

Heated: Yes
Finished: Yes
Enclosed: Yes
Contiguous: Yes
Permitted: Yes
Wet space: No
Addition: No
Conversion: No

470 Mandalay Avenue, Clearwater Beach, Pinellas County, Florida, United States, 33767, 305

3 Floor 1 - Living Room



Dimensions: 38'9" x 27'9"
Area: 614 sq. ft
Counted as living area: Yes

Heated: Yes
Finished: Yes
Enclosed: Yes
Contiguous: Yes
Permitted: Yes
Wet space: No
Addition: No
Conversion: No

4 Floor 1 - Bath



Dimensions: 2'7" x 6'1"
Area: 19 sq. ft
Counted as living area: Yes

Heated: Yes
Finished: Yes
Enclosed: Yes
Contiguous: Yes
Permitted: Yes
Wet space: Yes
Addition: No
Conversion: No

5 Floor 1 - Bath

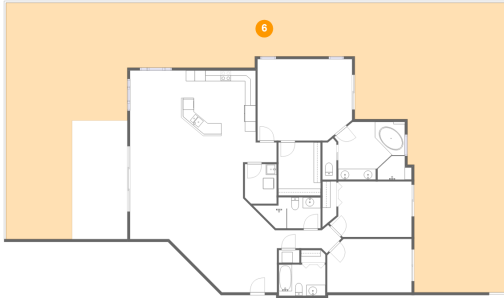


Dimensions: 9'3" x 5'9"
Area: 56 sq. ft
Counted as living area: Yes

Heated: Yes
Finished: Yes
Enclosed: Yes
Contiguous: Yes
Permitted: Yes
Wet space: Yes
Addition: No
Conversion: No

470 Mandalay Avenue, Clearwater Beach, Pinellas County, Florida, United States, 33767, 305

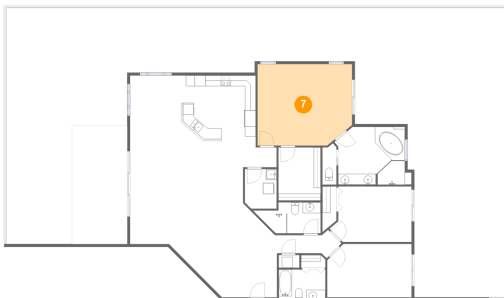
6 Floor 1 - Outdoor



Dimensions: 92'8" x 53'7"
Area: 2389 sq. ft
Counted as living area: No

Heated: No
Finished: No
Enclosed: No
Contiguous: Yes
Permitted: No
Wet space: No
Addition: No
Conversion: No

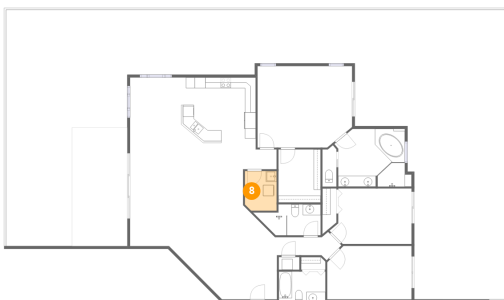
7 Floor 1 - Bedroom



Dimensions: 17'6" x 15'1"
Area: 256 sq. ft
Counted as living area: Yes

Heated: Yes
Finished: Yes
Enclosed: Yes
Contiguous: Yes
Permitted: Yes
Wet space: No
Addition: No
Conversion: No

8 Floor 1 - Utility

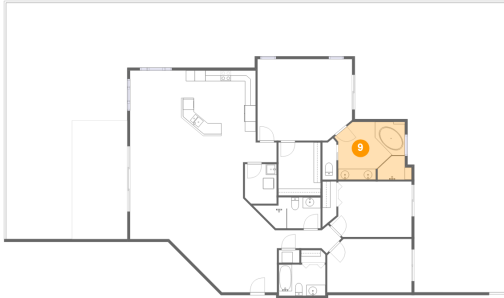


Dimensions: 5'11" x 7'4"
Area: 43 sq. ft
Counted as living area: Yes

Heated: Yes
Finished: Yes
Enclosed: Yes
Contiguous: Yes
Permitted: Yes
Wet space: No
Addition: No
Conversion: No

470 Mandalay Avenue, Clearwater Beach, Pinellas County, Florida, United States, 33767, 305

9 Floor 1 - Bath



Dimensions: 12'4" x 10'8"
Area: 131 sq. ft
Counted as living area: Yes

Heated: Yes
Finished: Yes
Enclosed: Yes
Contiguous: Yes
Permitted: Yes
Wet space: Yes
Addition: No
Conversion: No

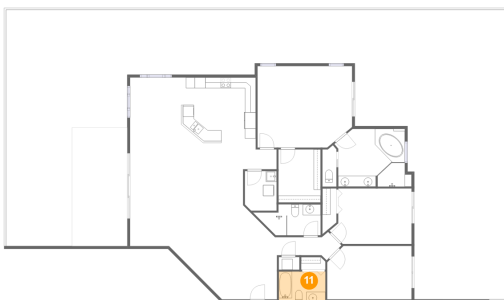
10 Floor 1 - Bedroom



Dimensions: 15'2" x 10'4"
Area: 142 sq. ft
Counted as living area: Yes

Heated: Yes
Finished: Yes
Enclosed: Yes
Contiguous: Yes
Permitted: Yes
Wet space: No
Addition: No
Conversion: No

11 Floor 1 - Bath

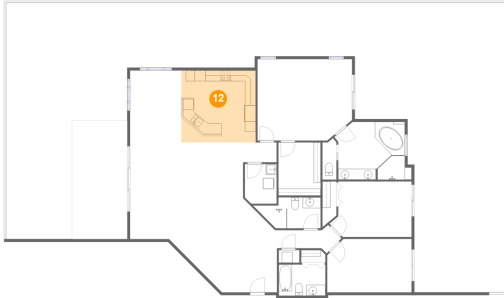


Dimensions: 8'8" x 5'9"
Area: 50 sq. ft
Counted as living area: Yes

Heated: Yes
Finished: Yes
Enclosed: Yes
Contiguous: Yes
Permitted: Yes
Wet space: Yes
Addition: No
Conversion: No

470 Mandalay Avenue, Clearwater Beach, Pinellas County, Florida, United States, 33767, 305

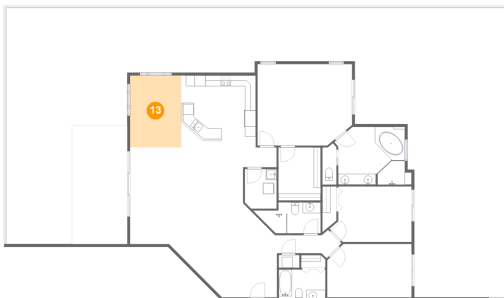
12 Floor 1 - Kitchen



Dimensions: 13'9" x 13'4"
Area: 184 sq. ft
Counted as living area: Yes

Heated: Yes
Finished: Yes
Enclosed: Yes
Contiguous: Yes
Permitted: Yes
Wet space: No
Addition: No
Conversion: No

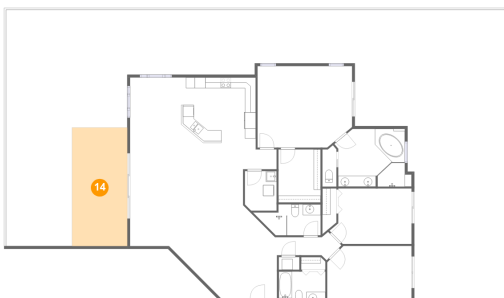
13 Floor 1 - Dining Room



Dimensions: 9'6" x 13'4"
Area: 126 sq. ft
Counted as living area: Yes

Heated: Yes
Finished: Yes
Enclosed: Yes
Contiguous: Yes
Permitted: Yes
Wet space: No
Addition: No
Conversion: No

14 Floor 1 - Outdoor



Dimensions: 10'3" x 21'11"
Area: 224 sq. ft
Counted as living area: No

Heated: No
Finished: Yes
Enclosed: No
Contiguous: Yes
Permitted: Yes
Wet space: No
Addition: No
Conversion: No