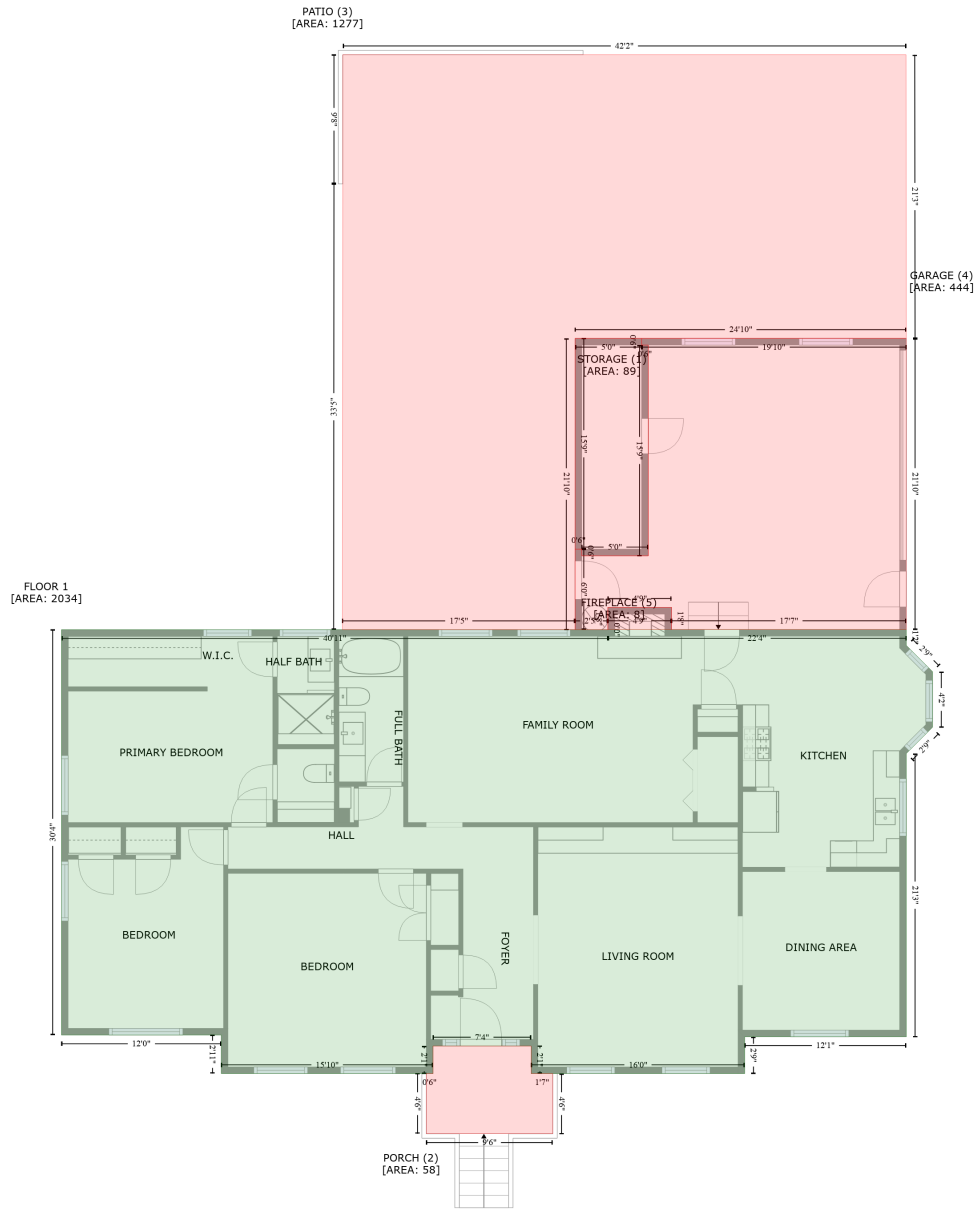


101 Wynnchester Road, Gastonia, Gaston County, North Carolina, United States, 28056

Gross Living Area: 2034 sq. ft



Space	Area (sq. ft)	Calculation
FLOOR 1 (Living area)	2034	Coordinate Polygon Area Algorithm using inches $-((758.4 + 758.4) * (567.6 - 581.8) + (758.4 + 782) * (581.8 - 605.4) + (782 + 782) * (605.4 - 655.4) + (782 + 758.4) * (655.4 - 679) + (758.4 + 758.4) * (679 - 933.6) + (758.4 + 613.1) * (933.6 - 933.6) + (613.1 + 613.1) * (933.6 - 966.7) + (613.1 + 421.1) * (966.7 - 966.7) + (421.1 + 421.1) * (966.7 - 941.9) + (421.1 + 332.8) * (941.9 - 941.9) + (332.8 + 332.8) * (941.9 - 966.7) + (332.8 + 142.5) * (966.7 - 966.7) + (142.5 + 142.5) * (966.7 - 932) + (142.5 + -1.2) * (932 - 932) + (-1.2 + -1.2) * (932 - 567.7) + (-1.2 + 490) * (567.7 - 567.7) + (490 + 490) * (567.7 - 567.6) + (490 + 758.4) * (567.6 - 567.6)) * 0.5 * 0.00694$

101 Wynnchester Road, Gastonia, Gaston County, North Carolina, United States, 28056

Gross Living Area: 2034 sq. ft

Space	Area (sq. ft)	Calculation <small>Coordinate Polygon Area Algorithm using inches</small>
STORAGE (Non-living area)	89	$-\left((520.4 + 520.4) * (305.9 - 311.9) + (520.4 + 526.4) * (311.9 - 311.9) + (526.4 + 526.4) * (311.9 - 501.3) + (526.4 + 466.6) * (501.3 - 501.3) + (466.6 + 466.6) * (501.3 - 495.3) + (466.6 + 460.6) * (495.3 - 495.3) + (460.6 + 460.6) * (495.3 - 305.9) + (460.6 + 520.4) * (305.9 - 305.9)\right) * 0.5 * 0.00694$
PORCH (Non-living area)	58	$-\left((421.1 + 421.1) * (941.9 - 966.7) + (421.1 + 440.6) * (966.7 - 966.7) + (440.6 + 440.6) * (966.7 - 1020.7) + (440.6 + 326.8) * (1020.7 - 1020.7) + (326.8 + 326.8) * (1020.7 - 966.7) + (326.8 + 332.8) * (966.7 - 966.7) + (332.8 + 332.8) * (966.7 - 941.9) + (332.8 + 421.1) * (941.9 - 941.9)\right) * 0.5 * 0.00694$
PATIO (Non-living area)	1277	$-\left((758.2 + 758.4) * (50.9 - 305.9) + (758.4 + 460.6) * (305.9 - 305.9) + (460.6 + 460.6) * (305.9 - 567.7) + (460.6 + 251.4) * (567.7 - 567.7) + (251.4 + 251.7) * (567.7 - 167) + (251.7 + 251.7) * (167 - 50.9) + (251.7 + 758.2) * (50.9 - 50.9)\right) * 0.5 * 0.00694$
GARAGE (Non-living area)	444	$-\left((520.4 + 758.4) * (305.9 - 305.9) + (758.4 + 758.4) * (305.9 - 567.6) + (758.4 + 547.4) * (567.6 - 567.6) + (547.4 + 547.4) * (567.6 - 547.6) + (547.4 + 490) * (547.6 - 547.6) + (490 + 490) * (547.6 - 567.7) + (490 + 460.6) * (567.7 - 567.7) + (460.6 + 460.6) * (567.7 - 495.3) + (460.6 + 466.6) * (495.3 - 495.3) + (466.6 + 466.6) * (495.3 - 501.3) + (466.6 + 526.4) * (501.3 - 501.3) + (526.4 + 526.4) * (501.3 - 311.9) + (526.4 + 520.4) * (311.9 - 311.9) + (520.4 + 520.4) * (311.9 - 305.9)\right) * 0.5 * 0.00694$
FIREPLACE (Non-living area)	8	$-\left((547.4 + 547.4) * (547.6 - 567.6) + (547.4 + 490) * (567.6 - 567.6) + (490 + 490) * (567.6 - 547.6) + (490 + 547.4) * (547.6 - 547.6)\right) * 0.5 * 0.00694$