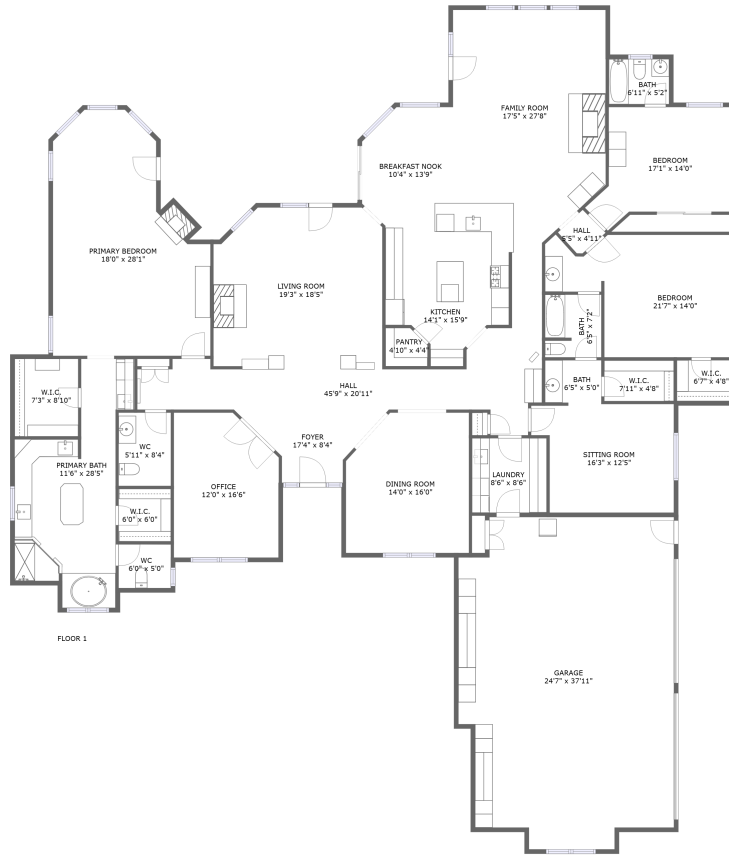



1065 Burnt Rock Way, Templeton, San Luis Obispo County, California, United States, 93465



Property summary

 **1** Garages

 **3** Bedrooms

 **3** Bathrooms

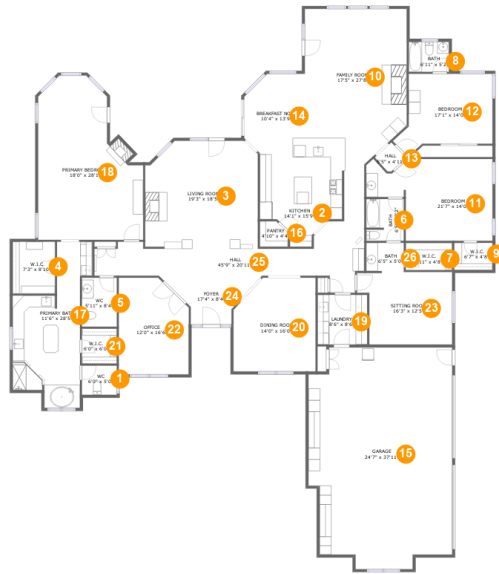
 **1** Half baths

 **1** Floors

 **3,928**
Gross living
area sqft

 **4,843**
Total sqft

1065 Burnt Rock Way, Templeton, San Luis Obispo County, California, United States, 93465



Room dimensions

Floor 1

Total sqft: 4843 Living area: 3928

#		Dimensions	sqft	Counted as living area
1	WC	6'0" x 5'0"	30 sq. ft	Yes
2	Kitchen	14'1" x 15'9"	180 sq. ft	Yes
3	Living Room	19'3" x 18'5"	339 sq. ft	Yes
4	W.I.C.	7'3" x 8'10"	64 sq. ft	Yes
5	WC	5'11" x 8'4"	50 sq. ft	Yes
6	Bath	6'5" x 7'2"	45 sq. ft	Yes
7	W.I.C.	7'11" x 4'8"	37 sq. ft	Yes
8	Bath	6'11" x 5'2"	35 sq. ft	Yes
9	W.I.C.	6'7" x 4'8"	31 sq. ft	Yes
10	Family Room	17'5" x 27'8"	432 sq. ft	Yes
11	Bedroom	21'7" x 14'0"	242 sq. ft	Yes

Scan captured on Sun, 16 Mar 2025 01:16:42 GMT

Information is calculated by Cubicasa technology deemed highly reliable but not guaranteed.

**1065 Burnt Rock Way, Templeton, San Luis Obispo
County, California, United States, 93465**

#		Dimensions	sqft	Counted as living area
12	Bedroom	17'1" x 14'0"	181 sq. ft	Yes
13	Hall	5'5" x 4'11"	14 sq. ft	Yes
14	Breakfast Nook	10'4" x 13'9"	131 sq. ft	Yes
15	Garage	24'7" x 37'11"	856 sq. ft	No
16	Pantry	4'10" x 4'4"	19 sq. ft	Yes
17	Primary Bath	11'6" x 28'5"	252 sq. ft	Yes
18	Primary Bedroom	18'0" x 28'1"	411 sq. ft	Yes
19	Laundry	8'6" x 8'6"	72 sq. ft	Yes
20	Dining Room	14'0" x 16'0"	211 sq. ft	Yes
21	W.I.C.	6'0" x 6'0"	36 sq. ft	Yes
22	Office	12'0" x 16'6"	184 sq. ft	Yes
23	Sitting Room	16'3" x 12'5"	182 sq. ft	Yes
24	Foyer	17'4" x 8'4"	88 sq. ft	Yes
25	Hall	45'9" x 20'11"	298 sq. ft	Yes
26	Bath	6'5" x 5'0"	32 sq. ft	Yes

1065 Burnt Rock Way, Templeton, San Luis Obispo County, California, United States, 93465

1 Floor 1 - WC



Dimensions: 6'0" x 5'0"
Area: 30 sq. ft
Counted as living area: Yes

Heated: Yes
Finished: Yes
Enclosed: Yes
Contiguous: Yes
Permitted: Yes
Wet space: No
Addition: No
Conversion: No

2 Floor 1 - Kitchen

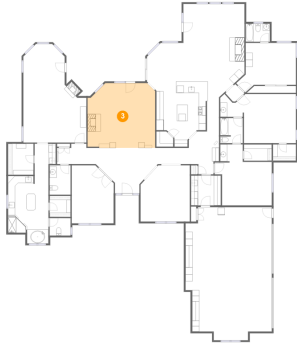


Dimensions: 14'1" x 15'9"
Area: 180 sq. ft
Counted as living area: Yes

Heated: Yes
Finished: Yes
Enclosed: Yes
Contiguous: Yes
Permitted: Yes
Wet space: No
Addition: No
Conversion: No

1065 Burnt Rock Way, Templeton, San Luis Obispo County, California, United States, 93465

3 Floor 1 - Living Room



Dimensions: 19'3" x 18'5"
Area: 339 sq. ft
Counted as living area: Yes

Heated: Yes
Finished: Yes
Enclosed: Yes
Contiguous: Yes
Permitted: Yes
Wet space: No
Addition: No
Conversion: No

4 Floor 1 - W.I.C.



Dimensions: 7'3" x 8'10"
Area: 64 sq. ft
Counted as living area: Yes

Heated: Yes
Finished: Yes
Enclosed: Yes
Contiguous: Yes
Permitted: Yes
Wet space: No
Addition: No
Conversion: No

5 Floor 1 - WC



Dimensions: 5'11" x 8'4"
Area: 50 sq. ft
Counted as living area: Yes

Heated: Yes
Finished: Yes
Enclosed: Yes
Contiguous: Yes
Permitted: Yes
Wet space: Yes
Addition: No
Conversion: No

1065 Burnt Rock Way, Templeton, San Luis Obispo County, California, United States, 93465

6 Floor 1 - Bath



Dimensions: 6'5" x 7'2"
Area: 45 sq. ft
Counted as living area: Yes

Heated: Yes
Finished: Yes
Enclosed: Yes
Contiguous: Yes
Permitted: Yes
Wet space: Yes
Addition: No
Conversion: No

7 Floor 1 - W.I.C.



Dimensions: 7'11" x 4'8"
Area: 37 sq. ft
Counted as living area: Yes

Heated: Yes
Finished: Yes
Enclosed: Yes
Contiguous: Yes
Permitted: Yes
Wet space: No
Addition: No
Conversion: No

8 Floor 1 - Bath



Dimensions: 6'11" x 5'2"
Area: 35 sq. ft
Counted as living area: Yes

Heated: Yes
Finished: Yes
Enclosed: Yes
Contiguous: Yes
Permitted: Yes
Wet space: Yes
Addition: No
Conversion: No

1065 Burnt Rock Way, Templeton, San Luis Obispo County, California, United States, 93465

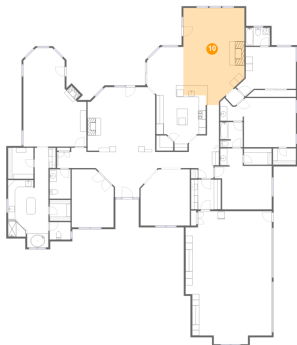
9 Floor 1 - W.I.C.



Dimensions: 6'7" x 4'8"
Area: 31 sq. ft
Counted as living area: Yes

Heated: Yes
Finished: Yes
Enclosed: Yes
Contiguous: Yes
Permitted: Yes
Wet space: No
Addition: No
Conversion: No

10 Floor 1 - Family Room



Dimensions: 17'5" x 27'8"
Area: 432 sq. ft
Counted as living area: Yes

Heated: Yes
Finished: Yes
Enclosed: Yes
Contiguous: Yes
Permitted: Yes
Wet space: No
Addition: No
Conversion: No

11 Floor 1 - Bedroom



Dimensions: 21'7" x 14'0"
Area: 242 sq. ft
Counted as living area: Yes

Heated: Yes
Finished: Yes
Enclosed: Yes
Contiguous: Yes
Permitted: Yes
Wet space: No
Addition: No
Conversion: No

1065 Burnt Rock Way, Templeton, San Luis Obispo County, California, United States, 93465

12 Floor 1 - Bedroom



Dimensions: 17'1" x 14'0"
Area: 181 sq. ft
Counted as living area: Yes

Heated: Yes
Finished: Yes
Enclosed: Yes
Contiguous: Yes
Permitted: Yes
Wet space: No
Addition: No
Conversion: No

13 Floor 1 - Hall



Dimensions: 5'5" x 4'11"
Area: 14 sq. ft
Counted as living area: Yes

Heated: Yes
Finished: Yes
Enclosed: Yes
Contiguous: Yes
Permitted: Yes
Wet space: No
Addition: No
Conversion: No

14 Floor 1 - Breakfast Nook

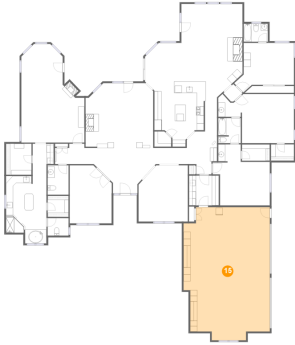


Dimensions: 10'4" x 13'9"
Area: 131 sq. ft
Counted as living area: Yes

Heated: Yes
Finished: Yes
Enclosed: Yes
Contiguous: Yes
Permitted: Yes
Wet space: No
Addition: No
Conversion: No

1065 Burnt Rock Way, Templeton, San Luis Obispo County, California, United States, 93465

15 Floor 1 - Garage



Dimensions: 24'7" x 37'11"
Area: 856 sq. ft
Counted as living area: No

Heated: No
Finished: No
Enclosed: Yes
Contiguous: Yes
Permitted: Yes
Wet space: No
Addition: No
Conversion: No

16 Floor 1 - Pantry



Dimensions: 4'10" x 4'4"
Area: 19 sq. ft
Counted as living area: Yes

Heated: Yes
Finished: Yes
Enclosed: Yes
Contiguous: Yes
Permitted: Yes
Wet space: No
Addition: No
Conversion: No

17 Floor 1 - Primary Bath

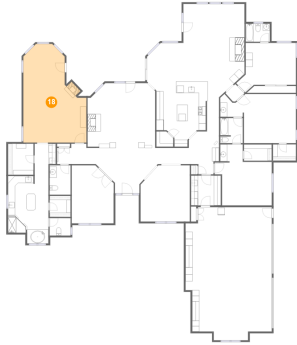


Dimensions: 11'6" x 28'5"
Area: 252 sq. ft
Counted as living area: Yes

Heated: Yes
Finished: Yes
Enclosed: Yes
Contiguous: Yes
Permitted: Yes
Wet space: Yes
Addition: No
Conversion: No

1065 Burnt Rock Way, Templeton, San Luis Obispo County, California, United States, 93465

18 Floor 1 - Primary Bedroom



Dimensions: 18'0" x 28'1"
Area: 411 sq. ft
Counted as living area: Yes

Heated: Yes
Finished: Yes
Enclosed: Yes
Contiguous: Yes
Permitted: Yes
Wet space: No
Addition: No
Conversion: No

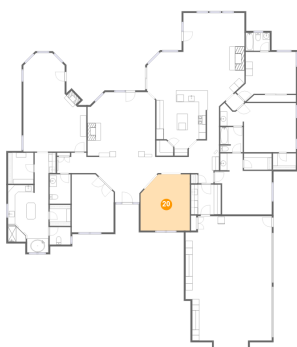
19 Floor 1 - Laundry



Dimensions: 8'6" x 8'6"
Area: 72 sq. ft
Counted as living area: Yes

Heated: Yes
Finished: Yes
Enclosed: Yes
Contiguous: Yes
Permitted: Yes
Wet space: No
Addition: No
Conversion: No

20 Floor 1 - Dining Room



Dimensions: 14'0" x 16'0"
Area: 211 sq. ft
Counted as living area: Yes

Heated: Yes
Finished: Yes
Enclosed: Yes
Contiguous: Yes
Permitted: Yes
Wet space: No
Addition: No
Conversion: No

1065 Burnt Rock Way, Templeton, San Luis Obispo County, California, United States, 93465

21 Floor 1 - W.I.C.



Dimensions: 6'0" x 6'0"
Area: 36 sq. ft
Counted as living area: Yes

Heated: Yes
Finished: Yes
Enclosed: Yes
Contiguous: Yes
Permitted: Yes
Wet space: No
Addition: No
Conversion: No

22 Floor 1 - Office



Dimensions: 12'0" x 16'6"
Area: 184 sq. ft
Counted as living area: Yes

Heated: Yes
Finished: Yes
Enclosed: Yes
Contiguous: Yes
Permitted: Yes
Wet space: No
Addition: No
Conversion: No

23 Floor 1 - Sitting Room

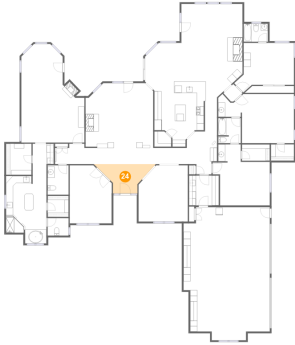


Dimensions: 16'3" x 12'5"
Area: 182 sq. ft
Counted as living area: Yes

Heated: Yes
Finished: Yes
Enclosed: Yes
Contiguous: Yes
Permitted: Yes
Wet space: No
Addition: No
Conversion: No

1065 Burnt Rock Way, Templeton, San Luis Obispo County, California, United States, 93465

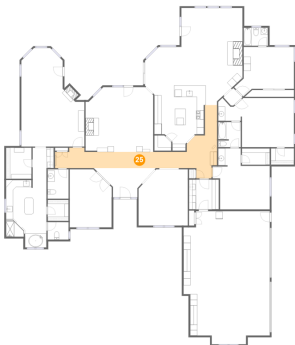
24 Floor 1 - Foyer



Dimensions: 17'4" x 8'4"
Area: 88 sq. ft
Counted as living area: Yes

Heated: Yes
Finished: Yes
Enclosed: Yes
Contiguous: Yes
Permitted: Yes
Wet space: No
Addition: No
Conversion: No

25 Floor 1 - Hall



Dimensions: 45'9" x 20'11"
Area: 298 sq. ft
Counted as living area: Yes

Heated: Yes
Finished: Yes
Enclosed: Yes
Contiguous: Yes
Permitted: Yes
Wet space: No
Addition: No
Conversion: No

26 Floor 1 - Bath



Dimensions: 6'5" x 5'0"
Area: 32 sq. ft
Counted as living area: Yes

Heated: Yes
Finished: Yes
Enclosed: Yes
Contiguous: Yes
Permitted: Yes
Wet space: Yes
Addition: No
Conversion: No