

Sitting Room
23'9" x 13'0"

Bedroom
18'3" x 10'7"

Bath
5'0" x 7'7"

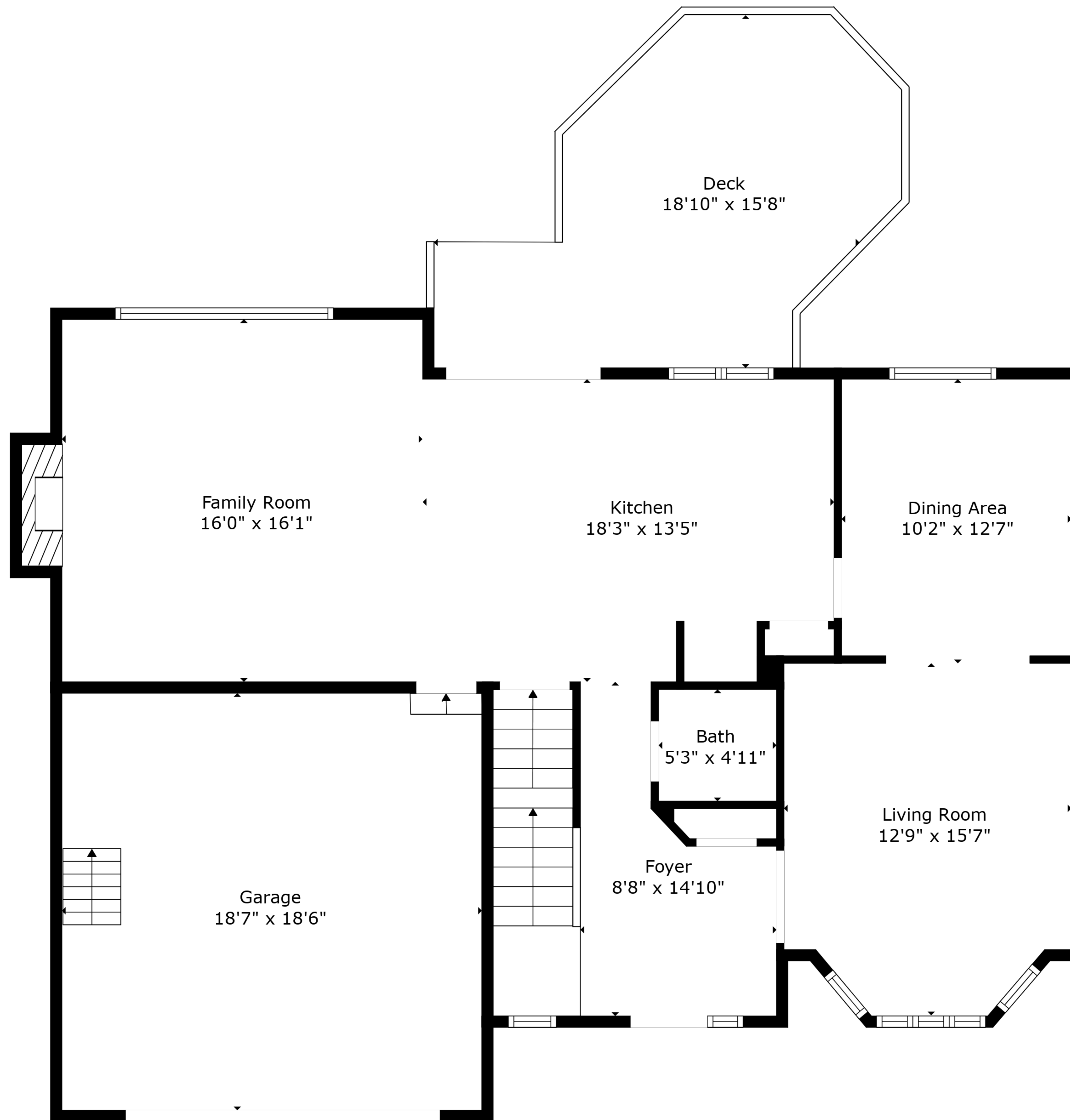
Utility
16'11" x 11'10"

Hall
6'10" x 13'8"

TOTAL: 2335 sq. ft

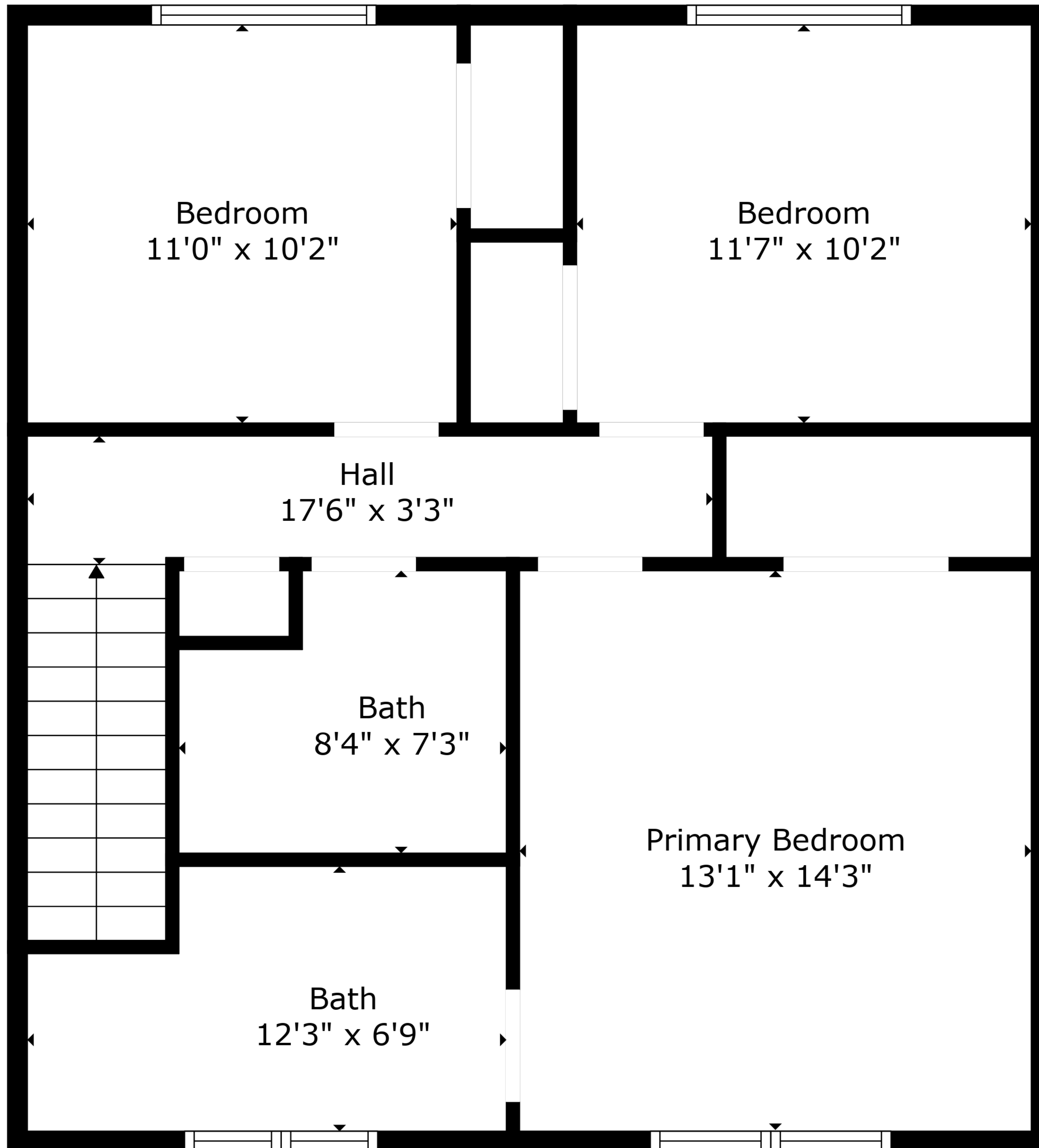
BELOW GROUND: 598 sq. ft, FLOOR 2: 1012 sq. ft, FLOOR 3: 725 sq. ft
EXCLUDED AREAS: UTILITY: 181 sq. ft, LOW CEILING: 19 sq. ft, DECK: 223 sq. ft,
GARAGE: 344 sq. ft, FIREPLACE: 11 sq. ft

Created By Nordy Photography. Calculations Deemed Highly Reliable But Not Guaranteed.



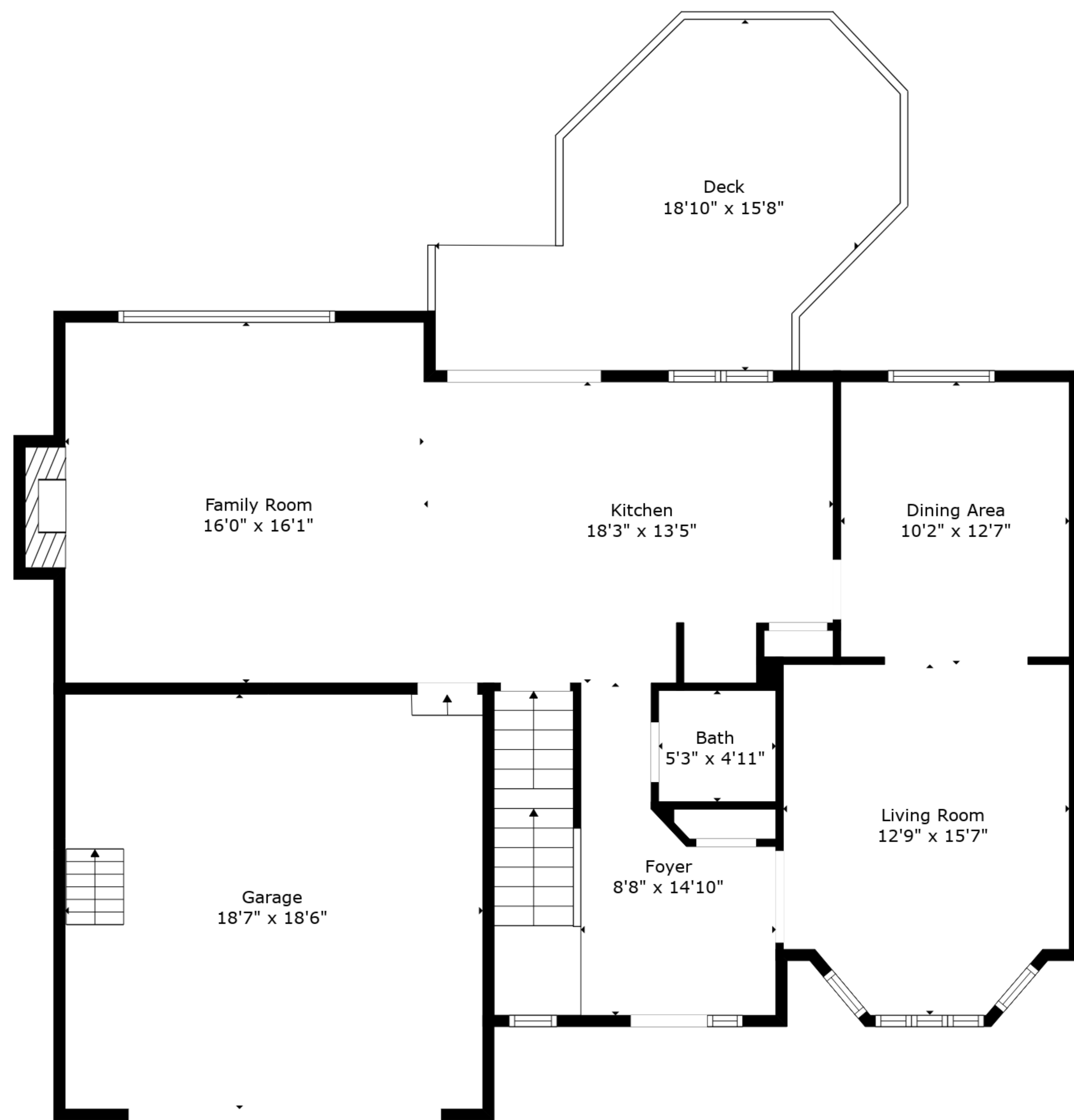
TOTAL: 2335 sq. ft

BELOW GROUND: 598 sq. ft, FLOOR 2: 1012 sq. ft, FLOOR 3: 725 sq. ft
 EXCLUDED AREAS: UTILITY: 181 sq. ft, LOW CEILING: 19 sq. ft, DECK: 223 sq. ft,
 GARAGE: 344 sq. ft, FIREPLACE: 11 sq. ft

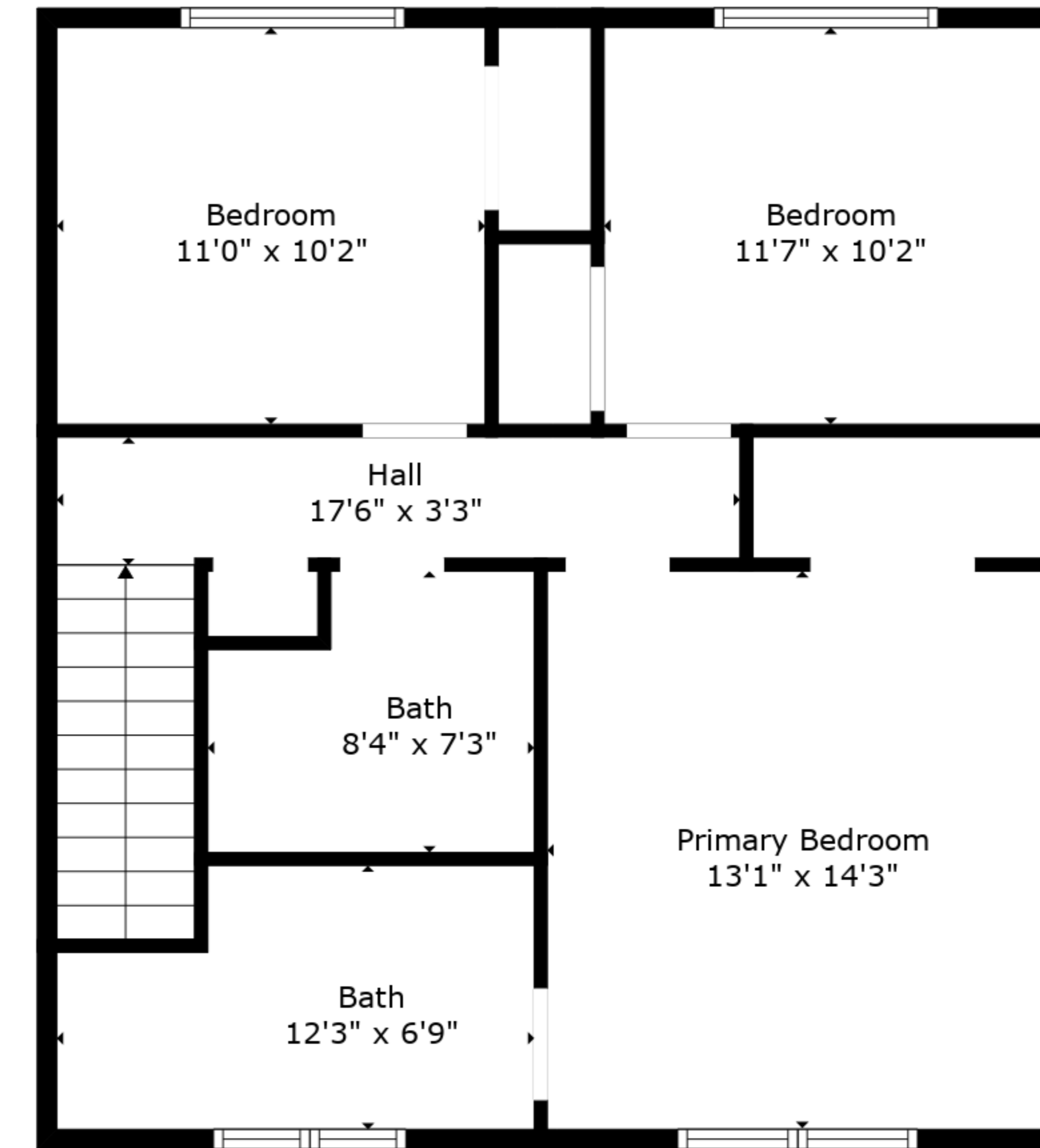


TOTAL: 2335 sq. ft

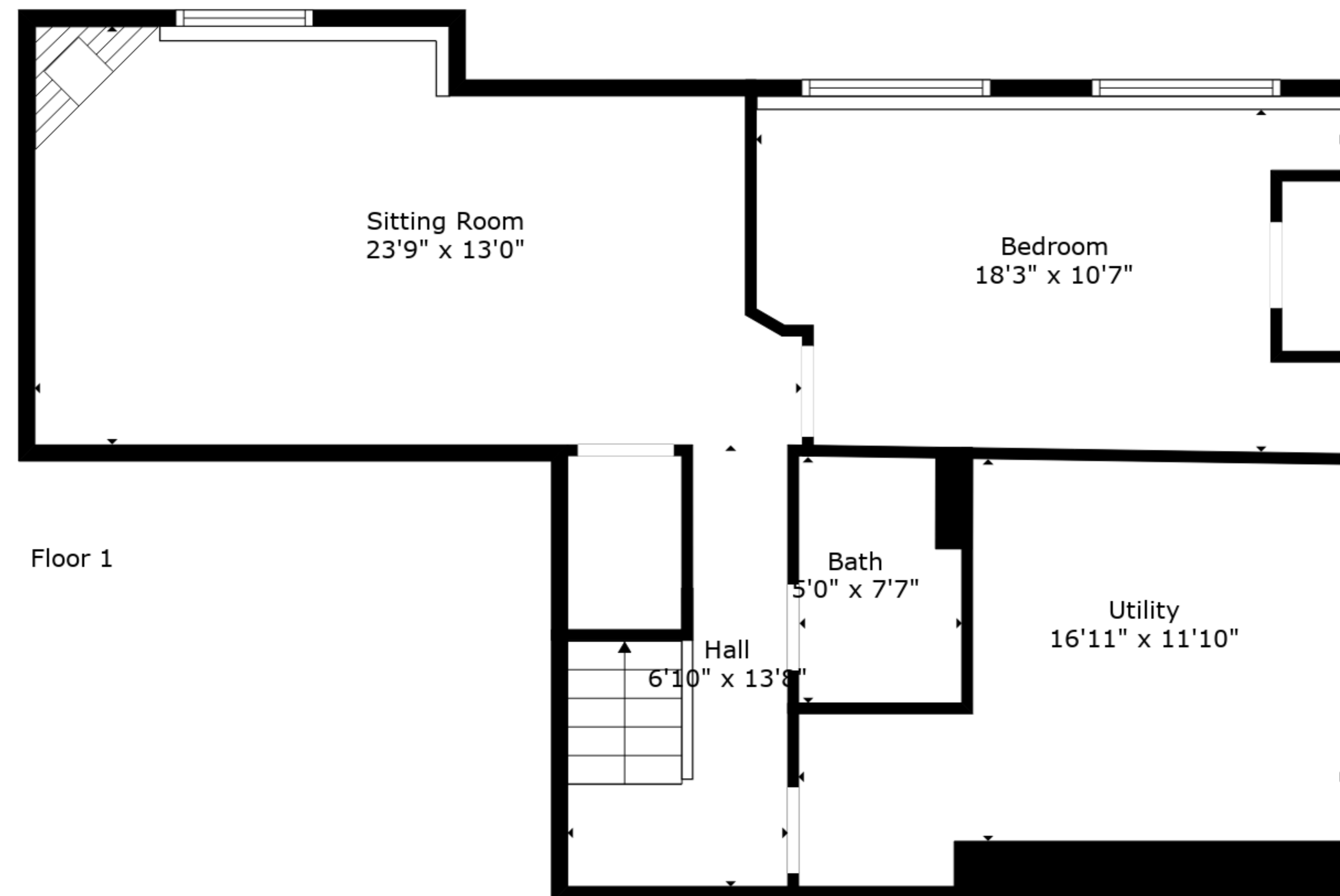
BELOW GROUND: 598 sq. ft, FLOOR 2: 1012 sq. ft, FLOOR 3: 725 sq. ft
EXCLUDED AREAS: UTILITY: 181 sq. ft, LOW CEILING: 19 sq. ft, DECK: 223 sq. ft,
GARAGE: 344 sq. ft, FIREPLACE: 11 sq. ft



Floor 2



Floor 3



Floor 1

TOTAL: 2335 sq. ft

BELOW GROUND: 598 sq. ft, FLOOR 2: 1012 sq. ft, FLOOR 3: 725 sq. ft
 EXCLUDED AREAS: UTILITY: 181 sq. ft, LOW CEILING: 19 sq. ft, DECK: 223 sq. ft,
 GARAGE: 344 sq. ft, FIREPLACE: 11 sq. ft