

Home data report

1040 W 2450 S,Nibley,UT,US



Total Area: 2339 sq. ft

1st Floor: 928 sq. ft, 2nd Floor: 1411 sq. ft

Excluded: Undefined 17 sq. ft, Garage 554 sq. ft, Walls: 183 sq. ft

Property summary

 **2** Floors

 **4** Bedrooms

 **2** Bathrooms

Home data report

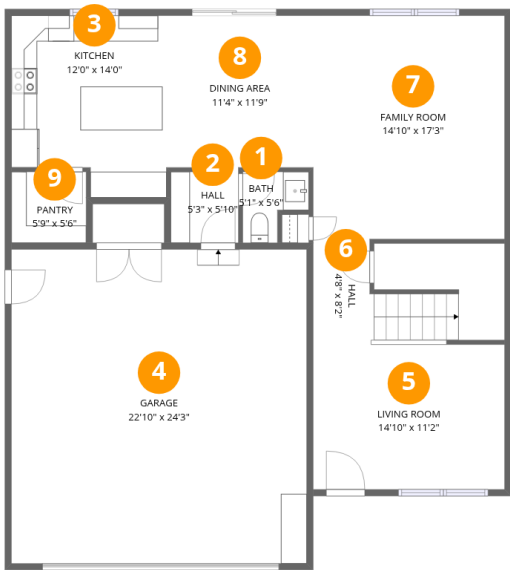
1040 W 2450 S,Nibley,UT,US

 **1**
Half baths

 **1**
Garages

Home data report

1040 W 2450 S,Nibley,UT,US



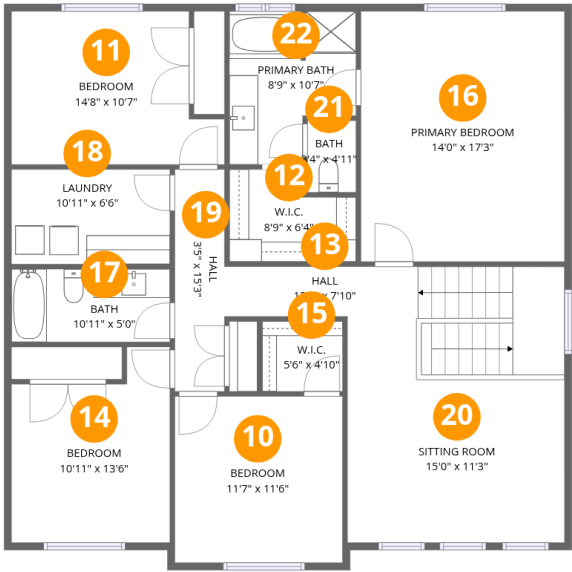
Room dimensions

Floor 1 Total:928sqft Excluded: 571sqft

#		Dimensions	sqft	Counted as living area
1	Bath	5'1" x 5'6"	28 sq. ft	Yes
2	Hall	5'3" x 5'10"	30 sq. ft	Yes
3	Kitchen	12'0" x 14'0"	168 sq. ft	Yes
4	Garage	22'10" x 24'3"	554 sq. ft	No
5	Living Room	14'10" x 11'2"	165 sq. ft	Yes
6	Hall	4'8" x 8'2"	38 sq. ft	Yes
7	Family Room	14'10" x 17'3"	255 sq. ft	Yes
8	Dining Area	11'4" x 11'9"	133 sq. ft	Yes
9	Pantry	5'9" x 5'6"	32 sq. ft	Yes

Home data report

1040 W 2450 S,Nibley,UT,US



Room dimensions

Floor 2 Total:1411sqft Excluded: 0sqft

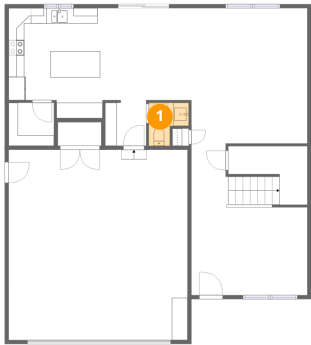
#		Dimensions	sqft	Counted as living area
10	Bedroom	11'7" x 11'6"	133 sq. ft	Yes
11	Bedroom	14'8" x 10'7"	155 sq. ft	Yes
12	W.I.C.	8'9" x 6'4"	55 sq. ft	Yes
13	Hall	13'4" x 7'10"	104 sq. ft	Yes
14	Bedroom	10'11" x 13'6"	147 sq. ft	Yes
15	W.I.C.	5'6" x 4'10"	27 sq. ft	Yes
16	Primary Bedroom	14'0" x 17'3"	242 sq. ft	Yes
17	Bath	10'11" x 5'0"	55 sq. ft	Yes
18	Laundry	10'11" x 6'6"	71 sq. ft	Yes
19	Hall	3'5" x 15'3"	52 sq. ft	Yes
20	Sitting Room	15'0" x 11'3"	168 sq. ft	Yes

Home data report

1040 W 2450 S,Nibley,UT,US

#		Dimensions	sqft	Counted as living area
21	Bath	3'4" x 4'11"	17 sq. ft	Yes
22	Primary Bath	8'9" x 10'7"	92 sq. ft	Yes

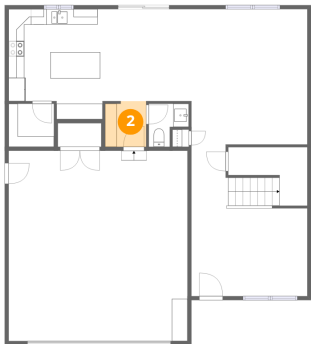
1 Floor 1 - Bath



Dimensions: 5'1" x 5'6"
Area: 28 sq. ft
Counted as living area: Yes

Heated: Yes
Finished: Yes
Enclosed: Yes
Contiguous: Yes
Permitted: Yes
Wet space: Yes
Addition: No
Conversion: No

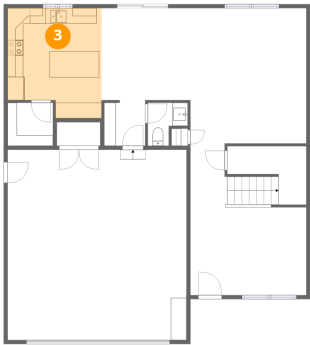
2 Floor 1 - Hall



Dimensions: 5'3" x 5'10"
Area: 30 sq. ft
Counted as living area: Yes

Heated: Yes
Finished: Yes
Enclosed: Yes
Contiguous: Yes
Permitted: Yes
Wet space: No
Addition: No
Conversion: No

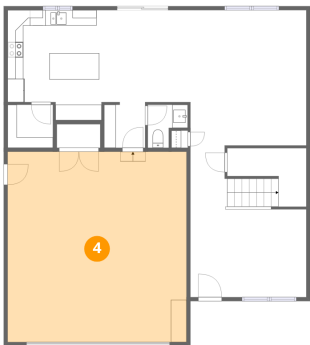
3 Floor 1 - Kitchen



Dimensions: 12'0" x 14'0"
Area: 168 sq. ft
Counted as living area: Yes

Heated: Yes
Finished: Yes
Enclosed: Yes
Contiguous: Yes
Permitted: Yes
Wet space: No
Addition: No
Conversion: No

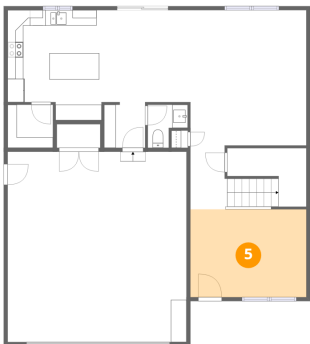
4 Floor 1 - Garage



Dimensions: 22'10" x 24'3"
Area: 554 sq. ft
Counted as living area: No

Heated: No
Finished: No
Enclosed: Yes
Contiguous: Yes
Permitted: Yes
Wet space: No
Addition: No
Conversion: No

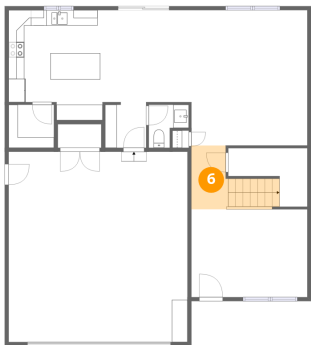
5 Floor 1 - Living Room



Dimensions: 14'10" x 11'2"
Area: 165 sq. ft
Counted as living area: Yes

Heated: Yes
Finished: Yes
Enclosed: Yes
Contiguous: Yes
Permitted: Yes
Wet space: No
Addition: No
Conversion: No

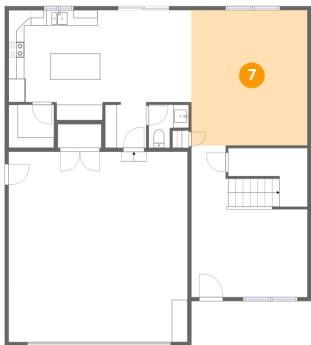
6 Floor 1 - Hall



Dimensions: 4'8" x 8'2"
Area: 38 sq. ft
Counted as living area: Yes

Heated: Yes
Finished: Yes
Enclosed: Yes
Contiguous: Yes
Permitted: Yes
Wet space: No
Addition: No
Conversion: No

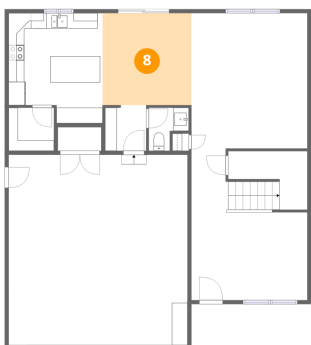
7 Floor 1 - Family Room



Dimensions: 14'10" x 17'3"
Area: 255 sq. ft
Counted as living area: Yes

Heated: Yes
Finished: Yes
Enclosed: Yes
Contiguous: Yes
Permitted: Yes
Wet space: No
Addition: No
Conversion: No

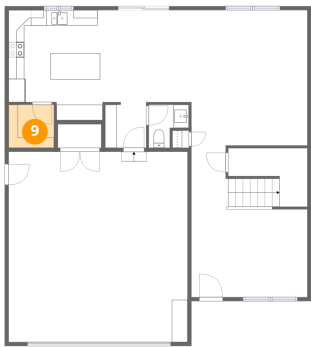
8 Floor 1 - Dining Area



Dimensions: 11'4" x 11'9"
Area: 133 sq. ft
Counted as living area: Yes

Heated: Yes
Finished: Yes
Enclosed: Yes
Contiguous: Yes
Permitted: Yes
Wet space: No
Addition: No
Conversion: No

9 Floor 1 - Pantry



Dimensions: 5'9" x 5'6"
Area: 32 sq. ft
Counted as living area: Yes

Heated: Yes
Finished: Yes
Enclosed: Yes
Contiguous: Yes
Permitted: Yes
Wet space: No
Addition: No
Conversion: No

10 Floor 2 - Bedroom



Dimensions: 11'7" x 11'6"
Area: 133 sq. ft
Counted as living area: Yes

Heated: Yes
Finished: Yes
Enclosed: Yes
Contiguous: Yes
Permitted: Yes
Wet space: No
Addition: No
Conversion: No

11 Floor 2 - Bedroom



Dimensions: 14'8" x 10'7"
Area: 155 sq. ft
Counted as living area: Yes

Heated: Yes
Finished: Yes
Enclosed: Yes
Contiguous: Yes
Permitted: Yes
Wet space: No
Addition: No
Conversion: No

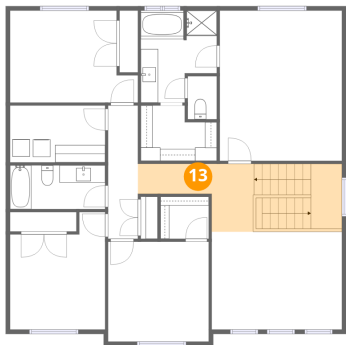
12 Floor 2 - W.I.C.



Dimensions: 8'9" x 6'4"
Area: 55 sq. ft
Counted as living area: Yes

Heated: Yes
Finished: Yes
Enclosed: Yes
Contiguous: Yes
Permitted: Yes
Wet space: No
Addition: No
Conversion: No

13 Floor 2 - Hall



Dimensions: 13'4" x 7'10"
Area: 104 sq. ft
Counted as living area: Yes

Heated: Yes
Finished: Yes
Enclosed: Yes
Contiguous: Yes
Permitted: Yes
Wet space: No
Addition: No
Conversion: No

14 Floor 2 - Bedroom



Dimensions: 10'11" x 13'6"
Area: 147 sq. ft
Counted as living area: Yes

Heated: Yes
Finished: Yes
Enclosed: Yes
Contiguous: Yes
Permitted: Yes
Wet space: No
Addition: No
Conversion: No

15 Floor 2 - W.I.C.



Dimensions: 5'6" x 4'10"
Area: 27 sq. ft
Counted as living area: Yes

Heated: Yes
Finished: Yes
Enclosed: Yes
Contiguous: Yes
Permitted: Yes
Wet space: No
Addition: No
Conversion: No

16 Floor 2 - Primary Bedroom



Dimensions: 14'0" x 17'3"
Area: 242 sq. ft
Counted as living area: Yes

Heated: Yes
Finished: Yes
Enclosed: Yes
Contiguous: Yes
Permitted: Yes
Wet space: No
Addition: No
Conversion: No

17 Floor 2 - Bath



Dimensions: 10'11" x 5'0"
Area: 55 sq. ft
Counted as living area: Yes

Heated: Yes
Finished: Yes
Enclosed: Yes
Contiguous: Yes
Permitted: Yes
Wet space: Yes
Addition: No
Conversion: No

18 Floor 2 - Laundry



Dimensions: 10'11" x 6'6"
Area: 71 sq. ft
Counted as living area: Yes

Heated: Yes
Finished: Yes
Enclosed: Yes
Contiguous: Yes
Permitted: Yes
Wet space: No
Addition: No
Conversion: No

19 Floor 2 - Hall



Dimensions: 3'5" x 15'3"
Area: 52 sq. ft
Counted as living area: Yes

Heated: Yes
Finished: Yes
Enclosed: Yes
Contiguous: Yes
Permitted: Yes
Wet space: No
Addition: No
Conversion: No

20 Floor 2 - Sitting Room



Dimensions: 15'0" x 11'3"
Area: 168 sq. ft
Counted as living area: Yes

Heated: Yes
Finished: Yes
Enclosed: Yes
Contiguous: Yes
Permitted: Yes
Wet space: No
Addition: No
Conversion: No

21 Floor 2 - Bath



Dimensions: 3'4" x 4'11"
Area: 17 sq. ft
Counted as living area: Yes

Heated: Yes
Finished: Yes
Enclosed: Yes
Contiguous: Yes
Permitted: Yes
Wet space: Yes
Addition: No
Conversion: No

22 Floor 2 - Primary Bath



Dimensions: 8'9" x 10'7"
Area: 92 sq. ft
Counted as living area: Yes

Heated: Yes
Finished: Yes
Enclosed: Yes
Contiguous: Yes
Permitted: Yes
Wet space: Yes
Addition: No
Conversion: No