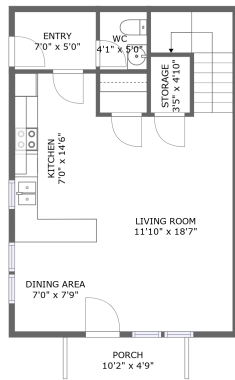
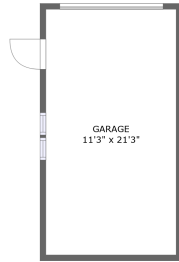
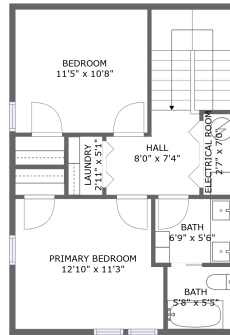


900-998 East Lander Street, Bonneville, Pocatello, Bannock County, Idaho, United States,



FLOOR 1



FLOOR 2

Property Summary



2 floors



2 bedrooms



1 bathrooms



1,441 total sqft



1 garages



1,084 Gross Living Area sqft

**900-998 East Lander Street, Bonneville,
Pocatello, Bannock County, Idaho, United States,**



Room Dimensions

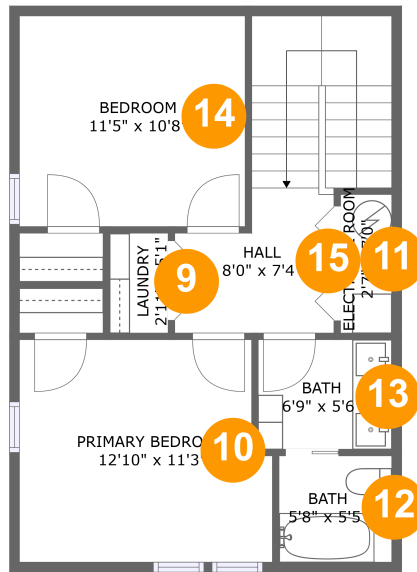
Floor 1

Total sqft: 881

Living area: 544

#	Room name	Dimensions	Area (sqft)	Counted as Living Area
1	Dining Area	7'0" x 7'9"	55 sq. ft	Yes
2	Wc	4'1" x 5'0"	20 sq. ft	Yes
3	Living Room	11'10" x 18'7"	263 sq. ft	Yes
4	Entry	7'0" x 5'0"	35 sq. ft	Yes
5	Garage	11'3" x 21'3"	239 sq. ft	No
6	Kitchen	7'0" x 14'6"	102 sq. ft	Yes
7	Storage	3'5" x 4'10"	16 sq. ft	No
8	Porch	10'2" x 4'9"	49 sq. ft	No

**900-998 East Lander Street, Bonneville,
Pocatello, Bannock County, Idaho, United States,**



Room Dimensions

Floor 2

Total sqft: 560

Living area: 540

#	Room name	Dimensions	Area (sqft)	Counted as Living Area
9	Laundry	2'11" x 5'1"	15 sq. ft	Yes
10	Primary Bedroom	12'10" x 11'3"	138 sq. ft	Yes
11	Electrical Room	2'7" x 7'0"	18 sq. ft	No
12	Bath	5'8" x 5'5"	31 sq. ft	Yes
13	Bath	6'9" x 5'6"	37 sq. ft	Yes
14	Bedroom	11'5" x 10'8"	122 sq. ft	Yes
15	Hall	8'0" x 7'4"	112 sq. ft	Yes

900-998 East Lander Street, Bonneville, Pocatello, Bannock County, Idaho, United States,

1 Floor 1 - Dining Area



Dimensions: 7'0" x 7'9"
Area: 55 sq. ft
Counted as Living Area:
Yes

Heated: Yes
Finished: Yes
Enclosed: Yes
Contiguous:
Yes
Permitted: Yes
Wet Space: No
Addition: No
Conversion: No



2 Floor 1 - Wc



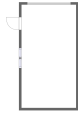
Dimensions: 4'1" x 5'0"
Area: 20 sq. ft
Counted as Living Area:
Yes

Heated: Yes
Finished: Yes
Enclosed: Yes
Contiguous:
Yes
Permitted: Yes
Wet Space: Yes
Addition: No
Conversion: No



**900-998 East Lander Street, Bonneville,
Pocatello, Bannock County, Idaho, United States,**

3 Floor 1 - Living Room



Dimensions: 11'10" x 18'7"
Area: 263 sq. ft
Counted as Living Area:
Yes

Heated: Yes
Finished: Yes
Enclosed: Yes
Contiguous:
Yes
Permitted: Yes
Wet Space: No
Addition: No
Conversion: No



4 Floor 1 - Entry



Dimensions: 7'0" x 5'0"
Area: 35 sq. ft
Counted as Living Area:
Yes

Heated: Yes
Finished: Yes
Enclosed: Yes
Contiguous:
Yes
Permitted: Yes
Wet Space: No
Addition: No
Conversion: No



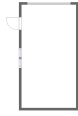
5 Floor 1 - Garage



Dimensions: 11'3" x 21'3"
Area: 239 sq. ft
Counted as Living Area: No

Heated: No
Finished: No
Enclosed: Yes
Contiguous: Yes
Permitted: Yes
Wet Space: No
Addition: No
Conversion: No



**900-998 East Lander Street, Bonneville,
Pocatello, Bannock County, Idaho, United States,****6 Floor 1 - Kitchen**

Dimensions: 7'0" x 14'6"
Area: 102 sq. ft
Counted as Living Area:
Yes

Heated: Yes
Finished: Yes
Enclosed: Yes
Contiguous:
Yes
Permitted: Yes
Wet Space: No
Addition: No
Conversion: No

7 Floor 1 - Storage

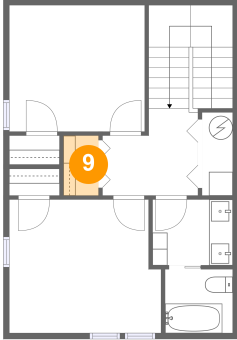
Dimensions: 3'5" x 4'10"
Area: 16 sq. ft
Counted as Living Area: No

Heated: No
Finished: No
Enclosed: No
Contiguous: Yes
Permitted: Yes
Wet Space: No
Addition: No
Conversion: No

8 Floor 1 - Porch

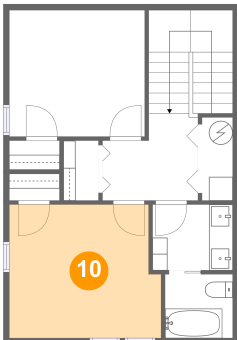
Dimensions: 10'2" x 4'9"
Area: 49 sq. ft
Counted as Living Area: No

Heated: No
Finished: Yes
Enclosed: No
Contiguous: Yes
Permitted: Yes
Wet Space: No
Addition: No
Conversion: No

**900-998 East Lander Street, Bonneville,
Pocatello, Bannock County, Idaho, United States,****9 Floor 2 - Laundry**

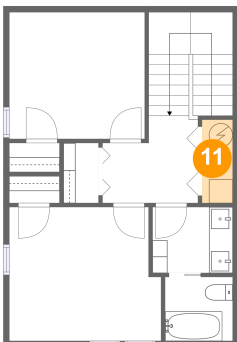
Dimensions: 2'11" x 5'1"
Area: 15 sq. ft
Counted as Living Area:
Yes

Heated: Yes
Finished: Yes
Enclosed: Yes
Contiguous:
Yes
Permitted: Yes
Wet Space: No
Addition: No
Conversion: No

10 Floor 2 - Primary Bedroom

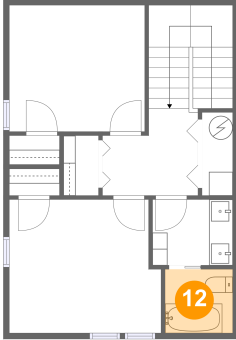
Dimensions: 12'10" x 11'3"
Area: 138 sq. ft
Counted as Living Area:
Yes

Heated: Yes
Finished: Yes
Enclosed: Yes
Contiguous:
Yes
Permitted: Yes
Wet Space: No
Addition: No
Conversion: No

11 Floor 2 - Electrical Room

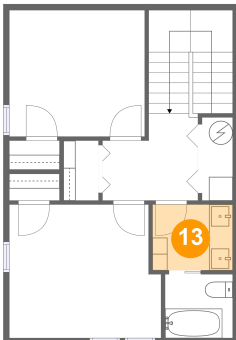
Dimensions: 2'7" x 7'0"
Area: 18 sq. ft
Counted as Living Area: No

Heated: No
Finished: No
Enclosed: Yes
Contiguous: Yes
Permitted: Yes
Wet Space: No
Addition: No
Conversion: No

**900-998 East Lander Street, Bonneville,
Pocatello, Bannock County, Idaho, United States,****12 Floor 2 - Bath**

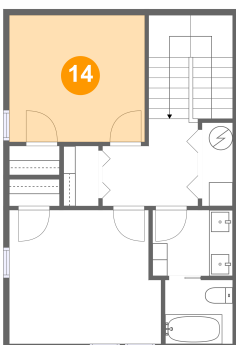
Dimensions: 5'8" x 5'5"
Area: 31 sq. ft
Counted as Living Area:
Yes

Heated: Yes
Finished: Yes
Enclosed: Yes
Contiguous:
Yes
Permitted: Yes
Wet Space: Yes
Addition: No
Conversion: No

13 Floor 2 - Bath

Dimensions: 6'9" x 5'6"
Area: 37 sq. ft
Counted as Living Area:
Yes

Heated: Yes
Finished: Yes
Enclosed: Yes
Contiguous:
Yes
Permitted: Yes
Wet Space: Yes
Addition: No
Conversion: No

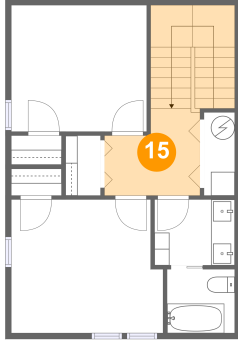
14 Floor 2 - Bedroom

Dimensions: 11'5" x 10'8"
Area: 122 sq. ft
Counted as Living Area:
Yes

Heated: Yes
Finished: Yes
Enclosed: Yes
Contiguous:
Yes
Permitted: Yes
Wet Space: No
Addition: No
Conversion: No

**900-998 East Lander Street, Bonneville,
Pocatello, Bannock County, Idaho, United States,**

15 Floor 2 - Hall



Dimensions: 8'0" x 7'4"
Area: 112 sq. ft
Counted as Living Area:
Yes

Heated: Yes
Finished: Yes
Enclosed: Yes
Contiguous:
Yes
Permitted: Yes
Wet Space: No
Addition: No
Conversion: No