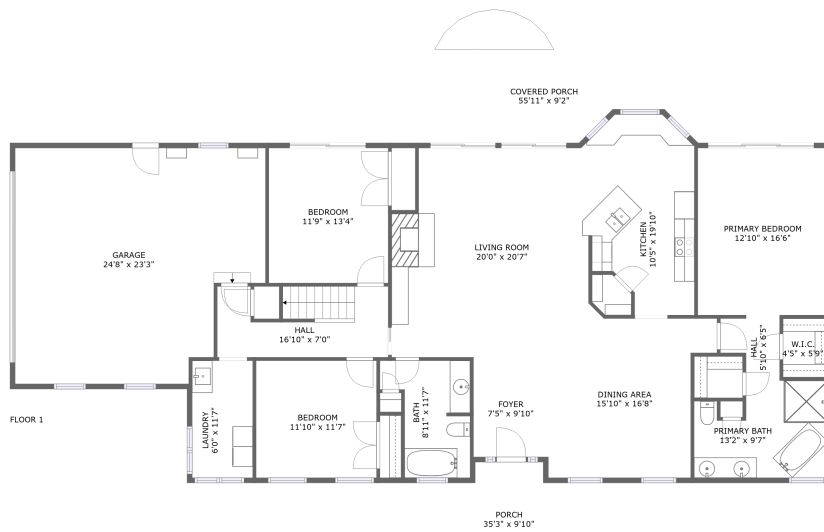
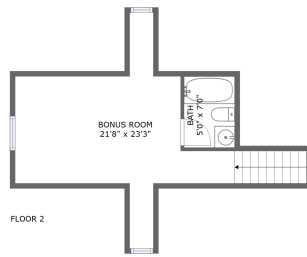




225 Dalewood Drive, Lexington, Virginia, United States



Property summary

 **1** Garages

 **3** Bedrooms

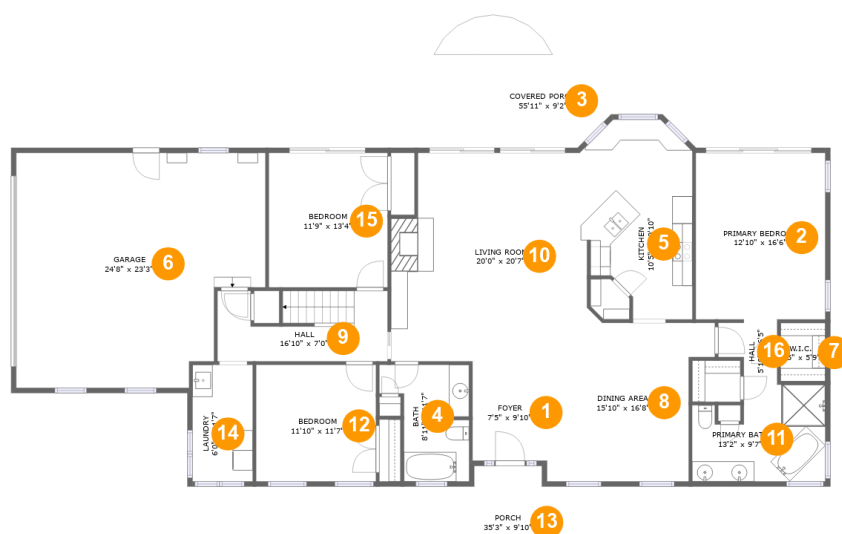
 **3** Bathrooms

 **0** Half baths

 **2** Floors

 **2,355**
Gross living
area sqft

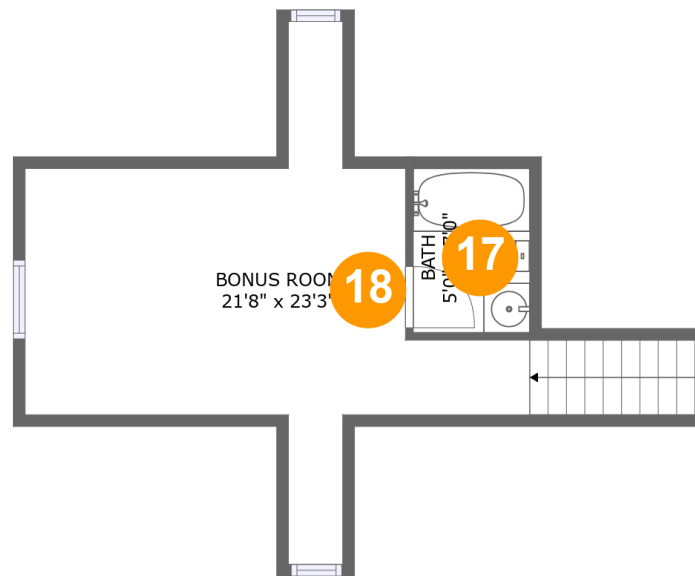
 **3,682**
Total sqft

225 Dalewood Drive, Lexington, Virginia, United States**Room dimensions****Floor 1****Total sqft: 3348 Living area: 2021**

#		Dimensions	sqft	Counted as living area
1	Foyer	7'5" x 9'10"	73 sq. ft	Yes
2	Primary Bedroom	12'10" x 16'6"	211 sq. ft	Yes
3	Covered Porch	55'11" x 9'2"	489 sq. ft	No
4	Bath	8'11" x 11'7"	81 sq. ft	Yes
5	Kitchen	10'5" x 19'10"	180 sq. ft	Yes
6	Garage	24'8" x 23'3"	517 sq. ft	No
7	W.I.C.	4'5" x 5'9"	26 sq. ft	Yes
8	Dining Area	15'10" x 16'8"	223 sq. ft	Yes
9	Hall	16'10" x 7'0"	106 sq. ft	Yes
10	Living Room	20'0" x 20'7"	376 sq. ft	Yes
11	Primary Bath	13'2" x 9'7"	110 sq. ft	Yes

225 Dalewood Drive, Lexington, Virginia, United States

#		Dimensions	sqft	Counted as living area
12	Bedroom	11'10" x 11'7"	137 sq. ft	Yes
13	Porch	35'3" x 9'10"	288 sq. ft	No
14	Laundry	6'0" x 11'7"	69 sq. ft	Yes
15	Bedroom	11'9" x 13'4"	157 sq. ft	Yes
16	Hall	5'10" x 6'5"	30 sq. ft	Yes

225 Dalewood Drive, Lexington, Virginia, United States

Room dimensions

Floor 2

Total sqft: 334 Living area: 334

#		Dimensions	sqft	Counted as living area
17	Bath	5'0" x 7'0"	35 sq. ft	Yes
18	Bonus Room	21'8" x 23'3"	242 sq. ft	Yes

225 Dalewood Drive, Lexington, Virginia, United States

1 Floor 1 - Foyer



Dimensions: 7'5" x 9'10"
Area: 73 sq. ft
Counted as living area: Yes

Heated: Yes
Finished: Yes
Enclosed: Yes
Contiguous: Yes
Permitted: Yes
Wet space: No
Addition: No
Conversion: No

2 Floor 1 - Primary Bedroom



Dimensions: 12'10" x 16'6"
Area: 211 sq. ft
Counted as living area: Yes

Heated: Yes
Finished: Yes
Enclosed: Yes
Contiguous: Yes
Permitted: Yes
Wet space: No
Addition: No
Conversion: No

225 Dalewood Drive, Lexington, Virginia, United States

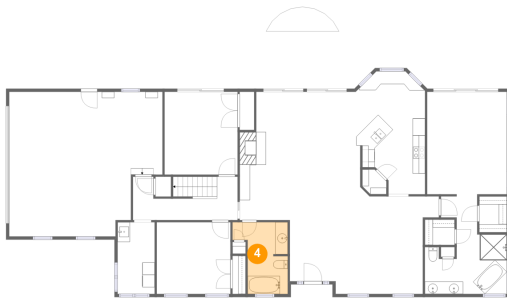
3 Floor 1 - Covered Porch



Dimensions: 55'11" x 9'2"
Area: 489 sq. ft
Counted as living area: No

Heated: No
Finished: Yes
Enclosed: No
Contiguous: Yes
Permitted: Yes
Wet space: No
Addition: No
Conversion: No

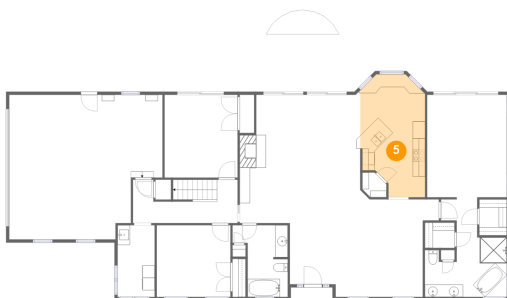
4 Floor 1 - Bath



Dimensions: 8'11" x 11'7"
Area: 81 sq. ft
Counted as living area: Yes

Heated: Yes
Finished: Yes
Enclosed: Yes
Contiguous: Yes
Permitted: Yes
Wet space: Yes
Addition: No
Conversion: No

5 Floor 1 - Kitchen



Dimensions: 10'5" x 19'10"
Area: 180 sq. ft
Counted as living area: Yes

Heated: Yes
Finished: Yes
Enclosed: Yes
Contiguous: Yes
Permitted: Yes
Wet space: No
Addition: No
Conversion: No

225 Dalewood Drive, Lexington, Virginia, United States

6 Floor 1 - Garage



Dimensions: 24'8" x 23'3"
Area: 517 sq. ft
Counted as living area: No

Heated: No
Finished: No
Enclosed: Yes
Contiguous: Yes
Permitted: Yes
Wet space: No
Addition: No
Conversion: No

7 Floor 1 - W.I.C.



Dimensions: 4'5" x 5'9"
Area: 26 sq. ft
Counted as living area: Yes

Heated: Yes
Finished: Yes
Enclosed: Yes
Contiguous: Yes
Permitted: Yes
Wet space: No
Addition: No
Conversion: No

8 Floor 1 - Dining Area



Dimensions: 15'10" x 16'8"
Area: 223 sq. ft
Counted as living area: Yes

Heated: Yes
Finished: Yes
Enclosed: Yes
Contiguous: Yes
Permitted: Yes
Wet space: No
Addition: No
Conversion: No

225 Dalewood Drive, Lexington, Virginia, United States

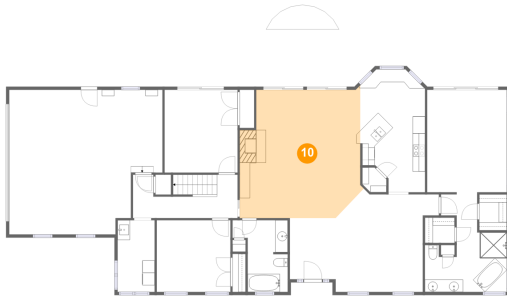
9 Floor 1 - Hall



Dimensions: 16'10" x 7'0"
Area: 106 sq. ft
Counted as living area: Yes

Heated: Yes
Finished: Yes
Enclosed: Yes
Contiguous: Yes
Permitted: Yes
Wet space: No
Addition: No
Conversion: No

10 Floor 1 - Living Room



Dimensions: 20'0" x 20'7"
Area: 376 sq. ft
Counted as living area: Yes

Heated: Yes
Finished: Yes
Enclosed: Yes
Contiguous: Yes
Permitted: Yes
Wet space: No
Addition: No
Conversion: No

11 Floor 1 - Primary Bath



Dimensions: 13'2" x 9'7"
Area: 110 sq. ft
Counted as living area: Yes

Heated: Yes
Finished: Yes
Enclosed: Yes
Contiguous: Yes
Permitted: Yes
Wet space: Yes
Addition: No
Conversion: No

225 Dalewood Drive, Lexington, Virginia, United States

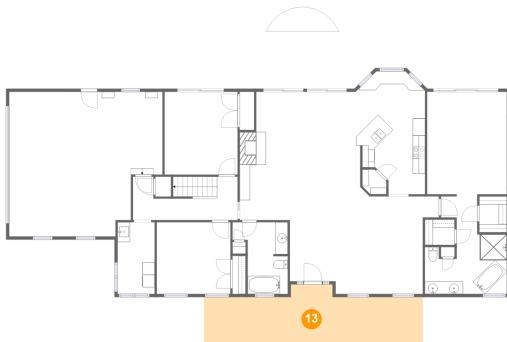
12 Floor 1 - Bedroom



Dimensions: 11'10" x 11'7"
Area: 137 sq. ft
Counted as living area: Yes

Heated: Yes
Finished: Yes
Enclosed: Yes
Contiguous: Yes
Permitted: Yes
Wet space: No
Addition: No
Conversion: No

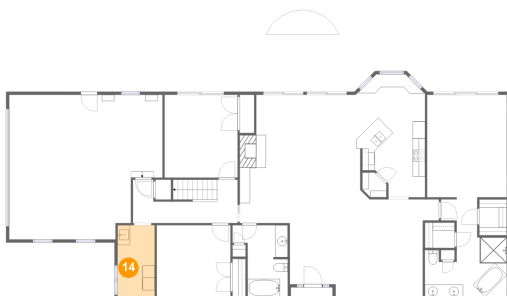
13 Floor 1 - Porch



Dimensions: 35'3" x 9'10"
Area: 288 sq. ft
Counted as living area: No

Heated: No
Finished: Yes
Enclosed: No
Contiguous: Yes
Permitted: Yes
Wet space: No
Addition: No
Conversion: No

14 Floor 1 - Laundry



Dimensions: 6'0" x 11'7"
Area: 69 sq. ft
Counted as living area: Yes

Heated: Yes
Finished: Yes
Enclosed: Yes
Contiguous: Yes
Permitted: Yes
Wet space: No
Addition: No
Conversion: No

225 Dalewood Drive, Lexington, Virginia, United States

15 Floor 1 - Bedroom



Dimensions: 11'9" x 13'4"
Area: 157 sq. ft
Counted as living area: Yes

Heated: Yes
Finished: Yes
Enclosed: Yes
Contiguous: Yes
Permitted: Yes
Wet space: No
Addition: No
Conversion: No

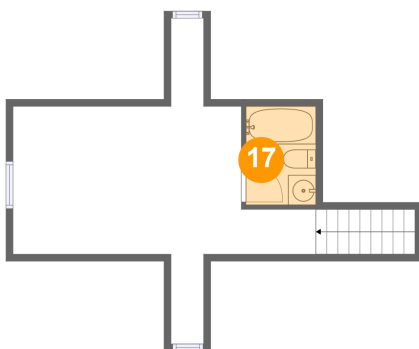
16 Floor 1 - Hall



Dimensions: 5'10" x 6'5"
Area: 30 sq. ft
Counted as living area: Yes

Heated: Yes
Finished: Yes
Enclosed: Yes
Contiguous: Yes
Permitted: Yes
Wet space: No
Addition: No
Conversion: No

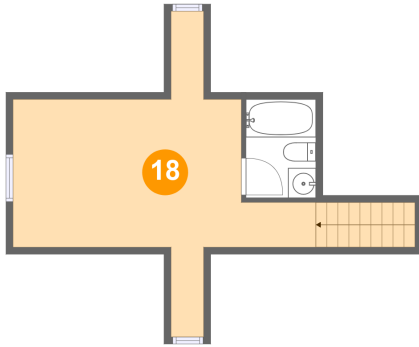
17 Floor 2 - Bath



Dimensions: 5'0" x 7'0"
Area: 35 sq. ft
Counted as living area: Yes

Heated: Yes
Finished: Yes
Enclosed: Yes
Contiguous: Yes
Permitted: Yes
Wet space: Yes
Addition: No
Conversion: No

18 Floor 2 - Bonus Room



Dimensions: 21'8" x 23'3"
Area: 242 sq. ft
Counted as living area: Yes

Heated: Yes
Finished: Yes
Enclosed: Yes
Contiguous: Yes
Permitted: Yes
Wet space: No
Addition: No
Conversion: No